



AUC Staff
AUC Executive Committee
Conference & Division Presidents, Secretaries and CFO's
Conference Aged Care CEO's
Conference Education Directors
CSR Church Governance Reference Group
CSR Aged Care Reference Group
CSR Schools Reference Group
CSR Consultative Forum
Conference Departmental Directors
National Education Council
School Principals

27 August 2020

Church Structure Review Update

Over the next four weeks we will be looking at the various models that the church structure review process has been commissioned to work on, and looking deeper into what 'areas' and 'districts' could potentially look like.

The current church structure in Australia is referred to as the 1:9:9:5, meaning one union, nine conferences, nine school companies and five aged care companies. One of the models being looked at is called the 1:4:1:1, which is one union, four conferences, one school system and one aged care system (See Figure 1).

One of the main changes in this model is reducing the number of conferences from nine to four. It would consolidate the existing conference resources and functions and redistribute them to the four new conferences. This would mean that all conferences would have enough resources to lead their areas, including additional resources to invest in ministers and mission, and support their local churches.

Seventh-day
Adventist Church
Australia

Another significant change is organising the schools and aged care companies into single entities. The process would work through different structure and governance options to ensure that these services are enhanced and assure the quality currently provided. Having one single entity throughout Australia would ensure there is a unity in these ministries and would make them more efficient and effective. As you can see from the figure below, these ministries would form part of the union with the ministry leaders working as needed with each conference.

The Union would remain unchanged as an administrative entity, however, there is an option for a slimmed down union in the 1:4:1:1 model. This option would mean that the union would no longer provide departmental leadership for conferences and churches, but that those functions would be delivered solely by the conferences.

One thing you will see in the figure is the mention of ‘Local Church District’ and ‘District Leader’, we will explain these further in upcoming communications but essentially local churches will be part of a district, which are then supported by a district leader. Having districts and district leaders will help the new conferences provide more localised support to their larger geographical areas. The Church Structure Review process is about making our local churches the focus of ministry, mission and resourcing, so having districts and district leaders will ensure that local churches and pastors are well resourced and supported.

This is a simple overview of the 1:4:1:1 model, we would invite you to join our Facebook page, *Structure Review – Seventh-day Adventist Church in Australia*, and use it as a forum for discussion.

As a church in Australia, we are all together on a journey and we want to invite you to pray with us, so that with God’s help we may be able to continually be more missional, more relevant to our communities and more like Him.

FOUR CONFERENCE STRUCTURE

1:4 = Conferences reduce from 9 to 4
Form Single Entities for Schools and Aged Care

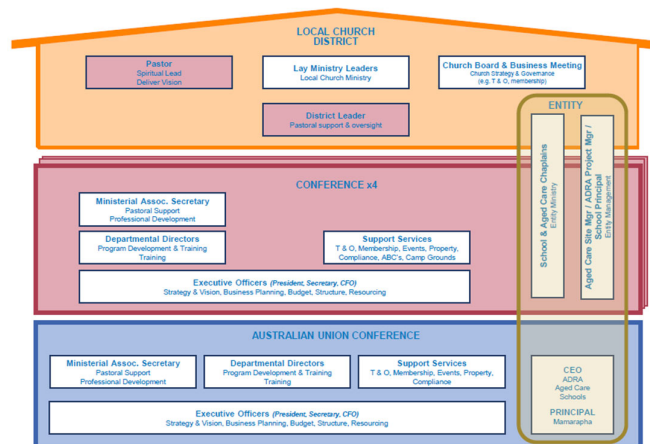


Figure 1

Warm Regards from the Church Structure Review Team

Jorge, Michael, Peter, Cat and Tim