

PROJECT DETAILS

BLOCK: 30 + 31
 SECTION: 91
 ADDRESS: 33 + 35 BREMER STREET
 SUBURB: GRIFFITH ACT
 4 No. CLASS C ADAPTABLE DWELLINGS IN CONFORMANCE WITH HACS DESIGN BRIEF

AREA SCHEDULE

SITE AREA:	1520m ²	
GFA	UNIT 1	- 114.2m ²
	UNIT 2	- 114.4m ²
	UNIT 3	- 114.2m ²
	UNIT 4	- 114.4m ²
TOTAL	= 457.2m ²	
PLOT RATIO	= ALLOWANCE OF 35% = 532m ² = PROPOSED 30%	
SITE OPEN SPACE - REQUIRED	= 40% OF SITE AREA = 608m ²	
- PROPOSED	= 1062m ² = 69%	
SITE PLANTING - REQUIRED	= 20% OF SITE AREA = 304m ²	
- PROPOSED	= 432m ² = 28%	

CARPARKING

REQUIREMENT: Min 1.5 SPACES PER 2 BEDROOM DWELLING
 or
 2 PARKING SPACES PER 2 BEDROOM DWELLING
 PLUS
 ONE VISITOR SPACE PER 4 DWELLINGS WHERE A COMPLEX
 COMPRISES 4 OR MORE DWELLINGS

PROPOSED -
 4 ALLOCATED SPACE
 2 SHARED SPACES
 1 VISITOR (ON STREET)



PROJECT STATUS:
FOR CONSULTATION

FLOOR PLAN
 HOUSING ACT
 33 + 35 BREMER STREET, GRIFFITH ACT
 BK:30 + 31 SEC:91 GRIFFITH



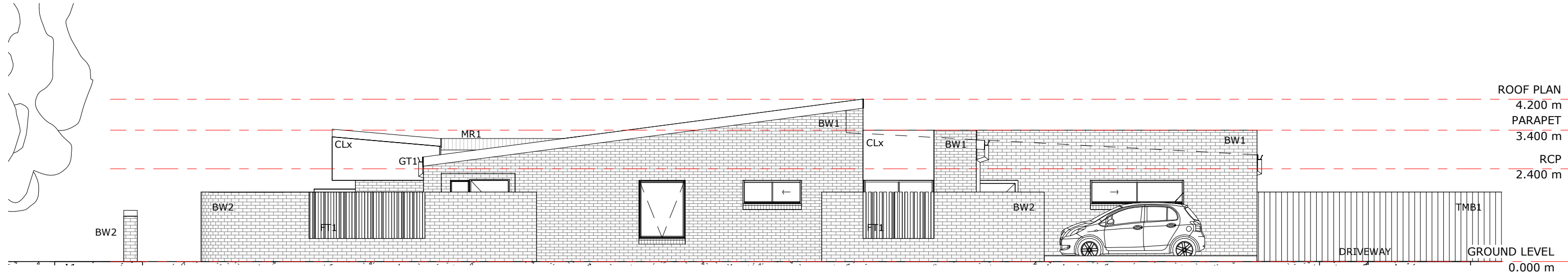
MUNNS SLY MOORE architects

MUNNS SLY MOORE ARCHITECTS PTY LTD ABN 28 888 034 047
 9 Hall Street | PO Box 5093 | Lyneham ACT 2602 Australia
 P +61 2 6248 8922 F +61 2 6248 8300
 Nominated Architect Robert Sly FAIA ACT #231 NSW #6712 www.munnslymoore.com.au

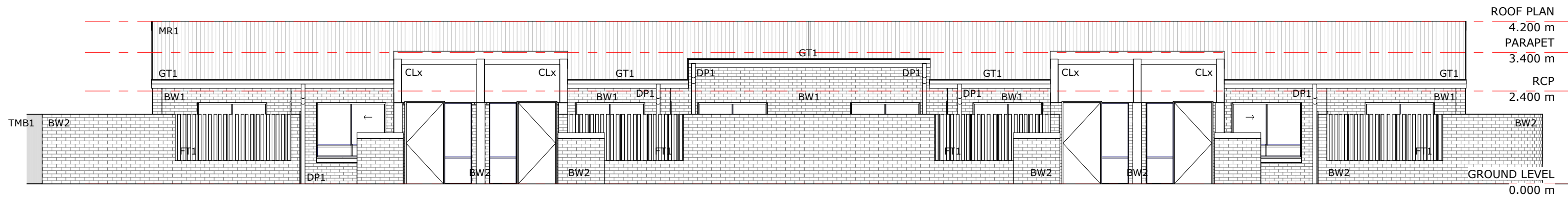
PROJECT No. DRAWING No. REVISION
4090G A101 2

LEGEND

- MR1 - METAL ROOFING, RAINWATER GOODS + FLASHINGS- COLORBOND 'SHALE GREY'
- GT1- GUTTERS. COLORBOND 'MONUMENT'
- DP1- DOWNPIPE. COLORBOND 'MONUMENT'
- BW1 - FACE BRICKWORK 1- GENERAL WALL. AUSTRAL NUBRIK 'CHAPEL RED'. STRETCHER BOND
- BW2- FACE BRICKWORK 2- COURTYARD WALL. BOWRAL BRICKS 'MURRAY GREY' STRETCHER BOND
- CL1 - FACADE CLADDING 1. FAIRVIEW EQUITONE 'NATURA N154'
- GL1- GLAZED WINDOWS + DOORS. POWDERCOATED FINISH TO MATCH 'MONUMENT'
- AL1- ALUMINIUM FRAME WINDOW + DOOR. POWDERCOATED FINISH TO MATCH 'MONUMENT'
- PS1 - POWDERCOATED STEEL SCREENING. FINISH TO MATCH 'MONUMENT'
- PS2 - POWDERCOATED FEATURE FRAME. FINISH TO MATCH 'MONUMENT'
- PST1- EXTERNAL STEELWORK.S PAINT FINISH TO MATCH 'MONUMENT'
- FT1- FENCE TYPE 1. POWDERCOATED STEEL SCREEN. FINISH TO MATCH 'MONUMENT'
- TMB1- TIMBER FENCE1- HARDWOOD. LAPPED + CAPPED.
- TMB2- MODWOOD DECKING.



2 WEST ELEVATION
1 : 100



1 NORTH ELEVATION
1 : 100



PROJECT STATUS:
FOR CONSULTATION

ELEVATIONS
HOUSING ACT
33 + 35 BREMER STREET, GRIFFITH ACT



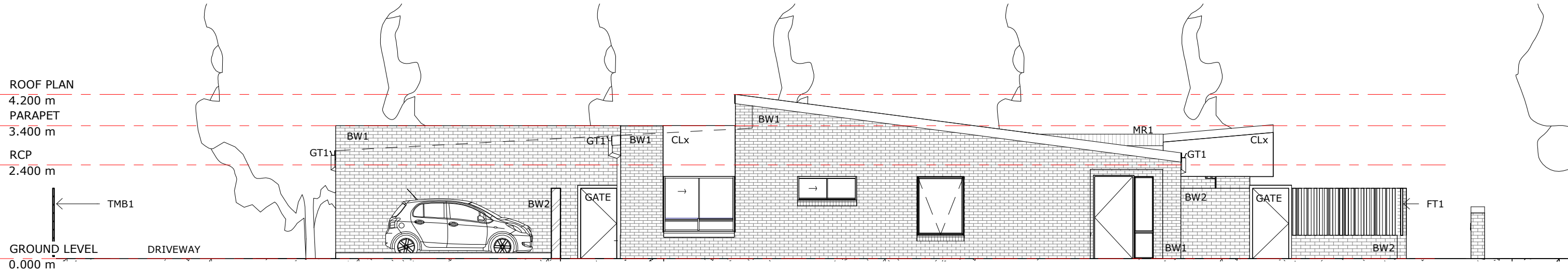
MUNNS SLY MOORE architects

MUNNS SLY MOORE ARCHITECTS PTY LTD ABN 28 888 034 049
9 Hall Street | PO Box 5093 | Lyneham ACT 2602 Australia
P +61 2 6248 8922 F +61 2 6248 8300
Nominated Architect Robert Sly FAIA ACT #311 NSW #0712 www.munnslymoore.com.au

PROJECT No. DRAWING No. REVISION
4090G A201 2

LEGEND

- MR1 - METAL ROOFING, RAINWATER GOODS + FLASHINGS- COLORBOND 'SHALE GREY'
- GT1- GUTTERS. COLORBOND 'MONUMENT'
- DP1- DOWNPIPE. COLORBOND 'MONUMENT'
- BW1 - FACE BRICKWORK 1- GENERAL WALL. AUSTRAL NUBRIK 'CHAPEL RED'. STRETCHER BOND
- BW2- FACE BRICKWORK 2- COURTYARD WALL. BOWRAL BRICKS ' MURRAY GREY' STRETCHER BOND
- CL1 - FACADE CLADDING 1. FAIRVIEW EQUITONE 'NATURA N154 '
- GL1- GLAZED WINDOWS + DOORS. POWDERCOATED FINISH TO MATCH 'MONUMENT'
- AL1- ALUMINIUM FRAME WINDOW + DOOR. POWDERCOATED FINISH TO MATCH 'MONUMENT'
- PS1 - POWDERCOATED STEEL SCREENING. FINISH TO MATCH 'MONUMENT'
- PS2 - POWDERCOATED FEATURE FRAME. FINISH TO MATCH 'MONUMENT'
- PST1- EXTERNAL STEELWORK. S PAINT FINISH TO MATCH 'MONUMENT'
- FT1- FENCE TYPE 1. POWDERCOATED STEEL SCREEN. FINISH TO MATCH 'MONUMENT'
- TMB1- TIMBER FENCE1- HARDWOOD. LAPPED + CAPPED.
- TMB2- MODWOOD DECKING.



1 EAST ELEVATION
1 : 100



2 SOUTH ELEVATION
1 : 100

ROOF PLAN
4.200 m
PARAPET
3.400 m
RCP
2.400 m
GROUND LEVEL
0.000 m



PROJECT STATUS:
FOR CONSULTATION

ELEVATIONS
HOUSING ACT
33 + 35 BREMER STREET, GRIFFITH ACT
BK:30 + 31 SEC:91 GRIFFITH



MUNNS SLY MOORE architects

MUNNS SLY MOORE ARCHITECTS PTY LTD ABN 28 888 034 049
9 Hall Street | PO Box 5093 | Lyneham ACT 2602 Australia
P +61 2 6248 8922 F +61 2 6248 8300
Nominated Architect Robert Sly FAIA ACT #231 NSW #6712 www.munnslymoore.com.au

PROJECT No. DRAWING No. REVISION
4090G A202 2