

Quality of life compensation

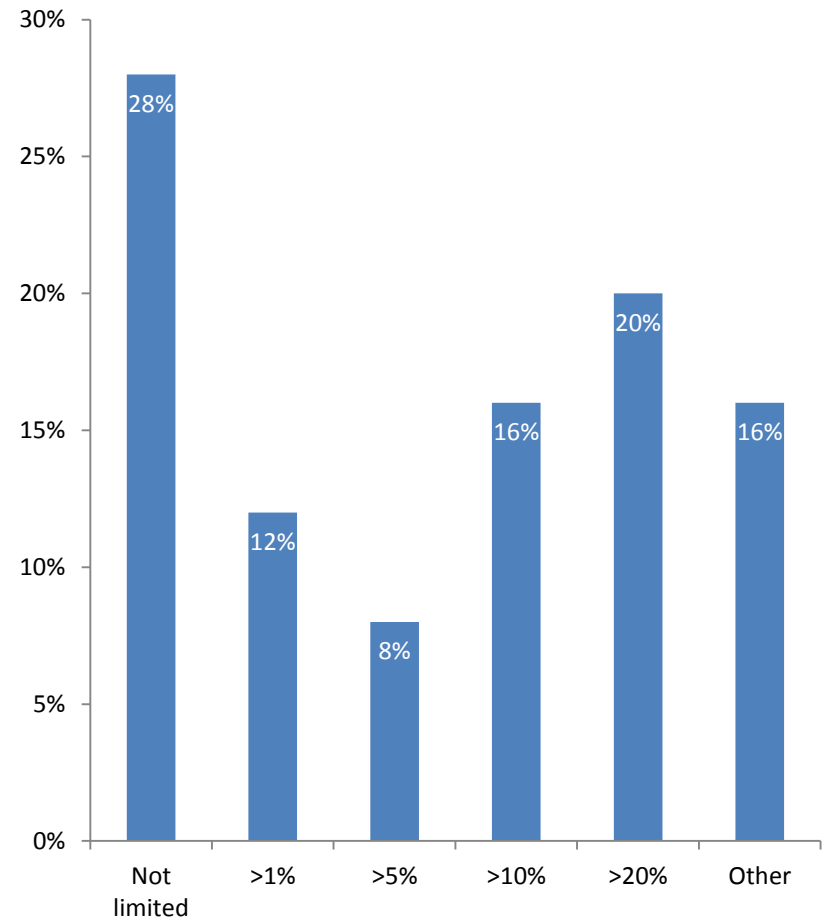
Juror survey

Methodology

- Consultation on Basecamp
- Detailed in the written report
- 31 injuries for consideration, each with a WPI
- 52% response rate
- Including responses for each limitation, and for none

Thresholds

- Majority support for some kind of limitation
- Consensus-blocking minority (28%) support no limit



0%-1% WPI

Injury	Would compensate
A night of irregular heartbeats	33%
Ruptured testicle	52%
Hearing loss and sleep-disturbing tinnitus	67%
Scars and irritations	32%
Anxious and “haunted”	63%
15 centimetre-long scar	29%
“Cobweb” and irritation in eye	58%
Head scars and asymmetrical nose	40%

- Even in the lowest category of WPI, jurors would compensate 50% of injured
- Scars make up $\frac{3}{4}$ of injuries that would not be compensated

2%-5% WPI

- Jurors would compensate 89% of injuries
- Lowest scores for impaired exercise and post-traumatic stress disorder

Injury	Would comp
“Degloved” and deafened child	88%
Convergence insufficiency	71%
Hernia and other pain	83%
Can’t exercise exacerbates diabetes	46%
Extensive scars “worry” niece, impair kneeling	58%
Paranoia, PTSD, trouble standing, music career on hold	60%
Stress and urge leakage	63%
Depression and dysphoria	64%
Frozen shoulder and ulcer	63%

6%-10% WPI

- Jurors would compensate 71% of injuries at this level
- Depression and psoriasis are the two that would not be compensated

Injury	Would comp
Depression and chronic adjustment disorder	33%
Astigmatism and glare intolerance	75%
Ruptured spleen and deep-vein thrombosis	67%
Exacerbated psoriasis	29%
Torn aorta	88%
Inverted vagina	75%
Reflux oesophagitis	67%

11%-20% WPI

- Jurors would compensate 100% of injured
- Lowest scores for eczema and mental-illness-associated bald patch

Injury	Would comp
50% of vision lost in one eye	84%
Worsened eczema affects manual activities	71%
Child suffers inflamed intestine	76%
Large bald patch	67%
Face fractures and fistula	88%

21% and greater WPI

- Jurors would compensate 50% of injuries at this level (but only two injuries!)
- Indirect relationship to car accident appears to have affected jurors' decisions

Injury	Would comp
"Flail chest" and reduced lung capacity	79%
Death of sibling causes major depression	13%

General upward trend

