



GLEBE PARK NATURE PLAY CANBERRA

Preliminary Sketch Plan Report

15th March 2019

Legend

- Existing Mass Planting
- Timber
- Decomposed Granite
- Rubber Wetpour
- Sensory Planting
- Mulch
- Sand (TBC)

Glebe Park Nature Play consists of the following zones:

- | | |
|--|---|
| <p>Sand and water play</p> <ul style="list-style-type: none"> A Water pump B Accessible water tray tables C Dry creek bed D Sand pit (TBC) E Accessible sand tray tables F Gathering circle G Sensory planting H Informal seating <p>Enchanted Journey</p> <ul style="list-style-type: none"> I Play house J Timber stumps steppers K Wind chimes L Timber balance beams | <p>Adventure Course</p> <ul style="list-style-type: none"> M Hanging net N Timber balance beams O Balancing rope P Twisting ladder <p>Tree House</p> <ul style="list-style-type: none"> Q Accessible ramp R Viewing platform S Seating T Rope ladder U Firemans pole V Climbing pummels W Spiders rope web X Balancing edge Y Monkey bars |
|--|---|

Each of these zones offer different play opportunities and are connected by the existing pathway that feature accessible grades.



0 2.5 5m
Scale 1:250 @ A3

Sand and Water Play

Sand and water play has been located to the western edge of the playspace for surveillance from Akuna Street as well as an existing drainage point for the water play.

The existing English Elms provide dense shade during the summer months and allows for sunlight during the winter months.

The generous sand pit provides ample space for numerous children of all abilities to use.

- A** Manual hand pump provides potable water
- B** Series of elevated tray tables enables water to flow through at various heights for inclusive opportunities
- C** Dry creek bed drains the water before draining into the existing stormwater pit
- D** Sand pit (TBC) with a boulder edge acting as a sand pit stage as well as seating opportunities for carers and guardians
- E** Elevated tray table to sand pit edge for inclusive opportunities for all users
- F** Gathering circle with accessible companion space
- G** Sensory planting wraps around the sand and water play providing a sense of enclosure and protection
- H** Ample informal seating boulders for parents and guardians

Recommendations

- Sensory experience can be enhanced with more diverse planting to stimulate the human senses including touch, smell and taste
- Temporary sand pit cover to protect the sand from leaf litter
- Additional tray tables of various heights for various age groups of wheel chair users



0 1 2m
Scale 1:100 @ A3

Enchanted Journey

The Enchanted Journey enhances the users experience of meandering through the existing English Elm Forest.

The journey enables users to move through the space to explore on their own route and at their own pace. Users are guided to view in different directions around the park as well as viewing up to the sky through the tree canopies.

There is minimal impact with the elements in the Enchanted Journey having limited impact on the existing trees.

The Enchanted Journey provides a linking element between the Sand and Water Play, to the Forest Adventure Course and onto the existing playground.

Play opportunities

- I** Cluster of 3 playhouses of various sizes are featured along the journey. The completed construction of the Ti-Pi's will vary encouraging children to build their own with branches and sticks. Children can also decorate the Ti-Pi's with found natural items
- J** Timber stumps of different colours provide connection routes through the forest floor. Children can choose their colour for competitive play or challenge
- K** Wind chimes are hung amongst the tree canopies providing sensory sounds and encouraging users to look up.
- L** Timber balance beams provide balancing opportunities and are used within the existing tree Structural Root Zones to minimise root disturbance. Balance beams also provide informal seating opportunities for parents and guardians

Recommendations

- Ensure materials for playhouses have a constant supply and/or top up
- Sensory planting which engages with all the senses: tactile, visual, auditory and vestibular. Examples include talkie tubes, and touch table for inclusive play.



0 2.5 5m
Scale 1:250 @ A3

Forest Adventure Course

Round vertical timber posts reflect the tall existing English Elms throughout Glebe Park. Tall timber posts with subtle detail provides a unique and memorable element to the adventure course. Timber posts are copper capped reflecting materiality featured on the existing Glebe Park Pavilion.

The Adventure Course provides various grades of challenge for all ages, and links seamlessly to the Tree House and the Enchanted Forest.

The forest Adventure Course provides numerous challenges and grades for repeat visitation for various ages.

M Generous hanging net provides space for lounging, relaxing and socialising. An accessible route of travel is provided to the hanging net for inclusive play

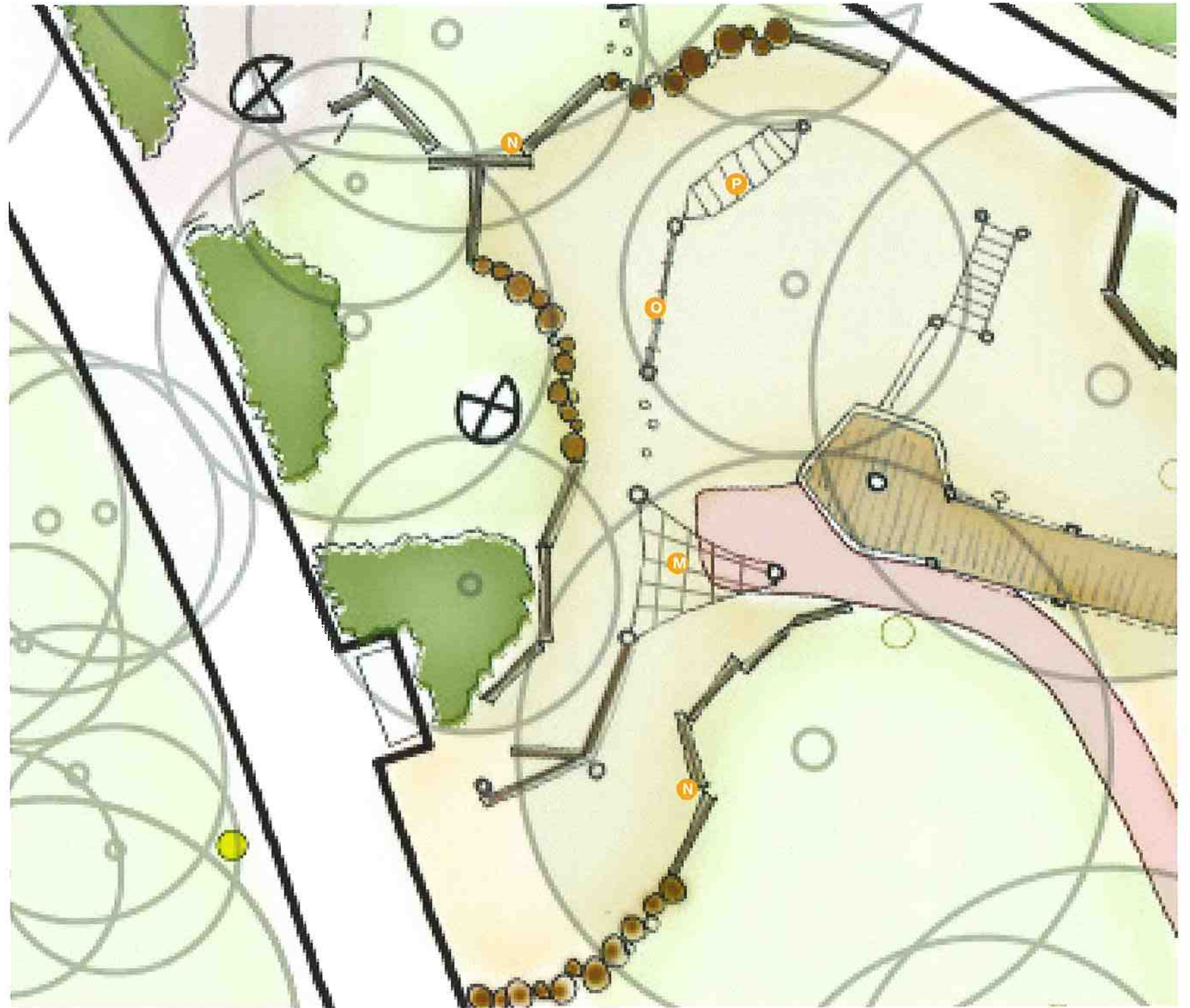
N Timber balance beams and stumps of various configurations for solo use or to race your friends. These elements provide opportunities for balancing, hopping, scrambling and climbing. The arrangement of the beams and stumps also act as an edge to retain the safety mulch for the play equipment with fall heights

O Balancing rope for challenging play

P Twisting ladder for challenging play

Recommendations

- Extension of Forest Adventure Course for greater play opportunities and challenges for all ages (including adults)
- Addition of inclusive basket swing



0 1 2m
Scale 1:100 @ A3

Tree House

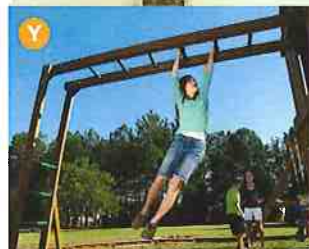
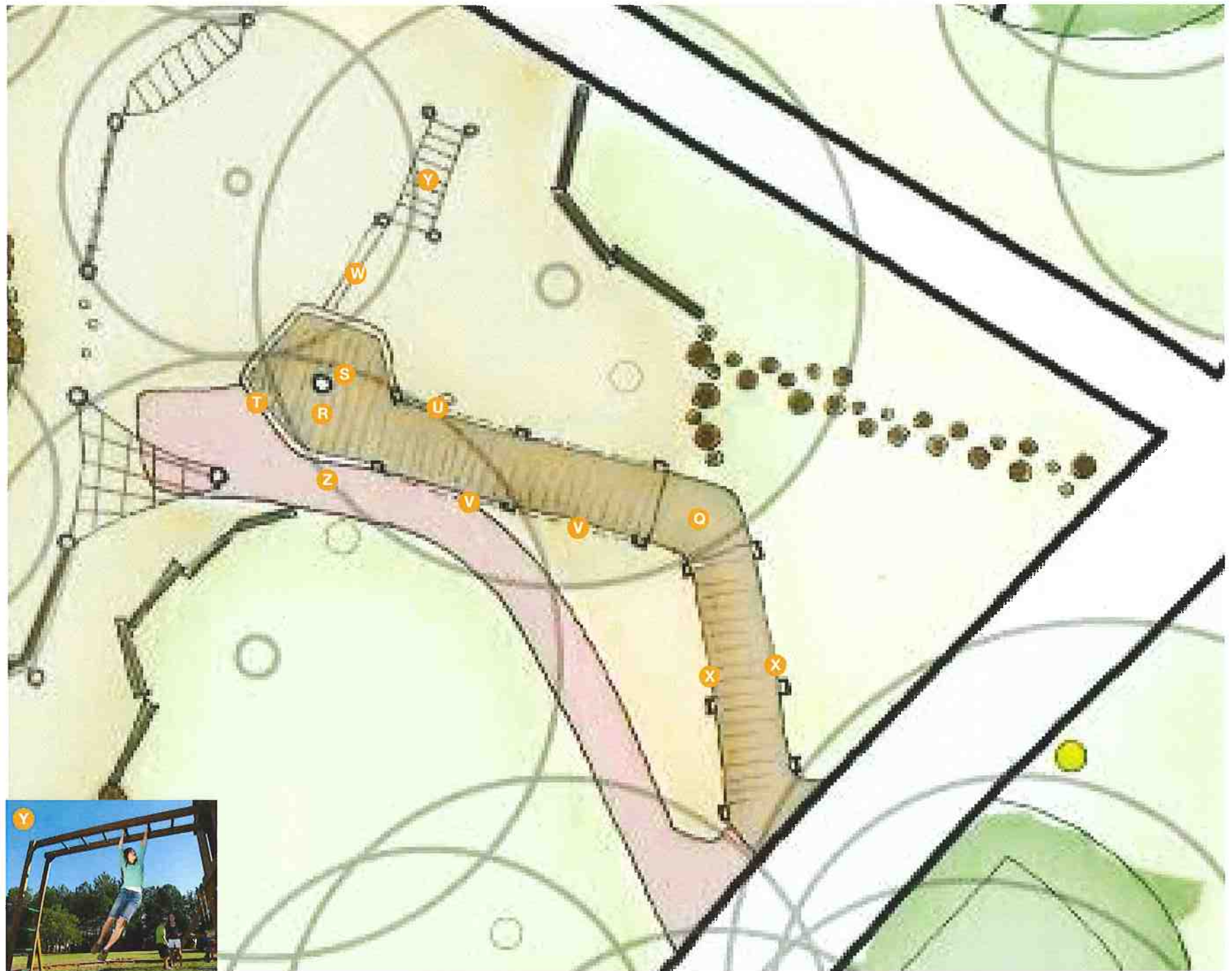
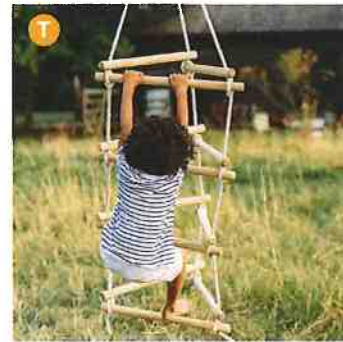
Situated higher amongst the existing tree canopy, the Tree House provides an inclusive play opportunity for users of all ages and abilities to get amongst the trees.

The Tree House is connected to the Forest Adventure Course and Enchanted Journey allowing users to link the play opportunities together.

- Q** Accessible ramped access to the viewing platform
- R** Viewing platform overlooking Glebe Park with the enchanted forest, adventure course and the sand and water play zone
- S** Seating opportunities with companion space on the viewing platform and beneath providing a quiet space for reflection

Ancillary play opportunities are integrated into the access ramp with various grades of challenge including:

- T** Rope ladder
- U** Firemans pole
- V** Climbing pummels
- W** Spiders rope web
- X** Balancing edge
- Y** Monkey bars
- Z** Accessible access along the base of the tree house through the ancillary play opportunities



0 1 2m
Scale 1:100 @ A3