



ACT
Government

THARWA VILLAGE PLAN

Community Engagement Report - Stage 2

SEPTEMBER 2018



© Australian Capital Territory, Canberra 2018

This work is copyright. Apart from any use as permitted under the *Copyright Act 1968*, no part may be reproduced by any process without written permission from:

Director-General, Environment, Planning and Sustainable Development
Directorate, ACT Government, GPO Box 158, Canberra ACT 2601.

Telephone: 02 6207 1923

Website: www.planning.act.gov.au

Accessibility

The ACT Government is committed to making its information, services, events and venues as accessible as possible.

If you have difficulty reading a standard printed document and would like to receive this publication in an alternative format, such as large print, please phone Access Canberra on 13 22 81 or email the Environment, Planning and Sustainable Development Directorate at EPSDDComms@act.gov.au

If English is not your first language and you require a translating and interpreting service, please phone 13 14 50.

If you are deaf, or have a speech or hearing impairment, and need the teletypewriter service, please phone 13 36 77 and ask for Access Canberra on 13 22 81.

For speak and listen users, please phone 1300 555 727 and ask for Canberra Connect on 13 22 81.

For more information on these services visit <http://www.relayservice.com.au>



PRINTED ON RECYCLED PAPER



CONTENTS

- EXECUTIVE SUMMARY.....5**
- INTRODUCTION7**
 - Community engagement approach8
 - Community engagement objectives8
- COMMUNITY ENGAGEMENT ACTIVITIES9**
 - ACT Government9
 - Internet and social media10
 - Community engagement outcomes.....10
 - Summary of analysis.....18
- NEXT STAGE.....20**
- APPENDIX.....20**



EXECUTIVE SUMMARY

The ACT Government has completed a village plan for the Tharwa Village. The Tharwa Village Plan sets out a vision, planning principles, spatial framework, planning strategies and policies to guide its enhancement and social, environmental and economic sustainability into the future.

The Tharwa Village Plan (the plan) aims to foster the protection and enhancement of Tharwa's unique character and build upon the value the Tharwa village contributes to the local community, tourism and recreational opportunities for Canberra. The village plan has been prepared in response to actions outlined in the ACT Planning Strategy (2012) to provide strategies to retain the function and identity of regional villages and towns as distinct places, rather than a continuation of the Canberra urban area. It also includes supporting lifestyle opportunities afforded by the region to live in an urban or suburban environment, rural village, the 'bush' or on a farm.

Stage 1 community engagement for the village plan was undertaken between 27 January and 26 February 2016. Feedback from the community, together with background studies and input from private stakeholders and ACT Government agencies, informed the development of the draft village plan. For a report on the key findings of the Stage 1 engagement visit www.planning.act.gov.au.

Stage 2 community engagement on the draft village plan was undertaken between 14 August and 22 September 2017 to seek feedback from the community. The feedback received was used to develop the final village plan.

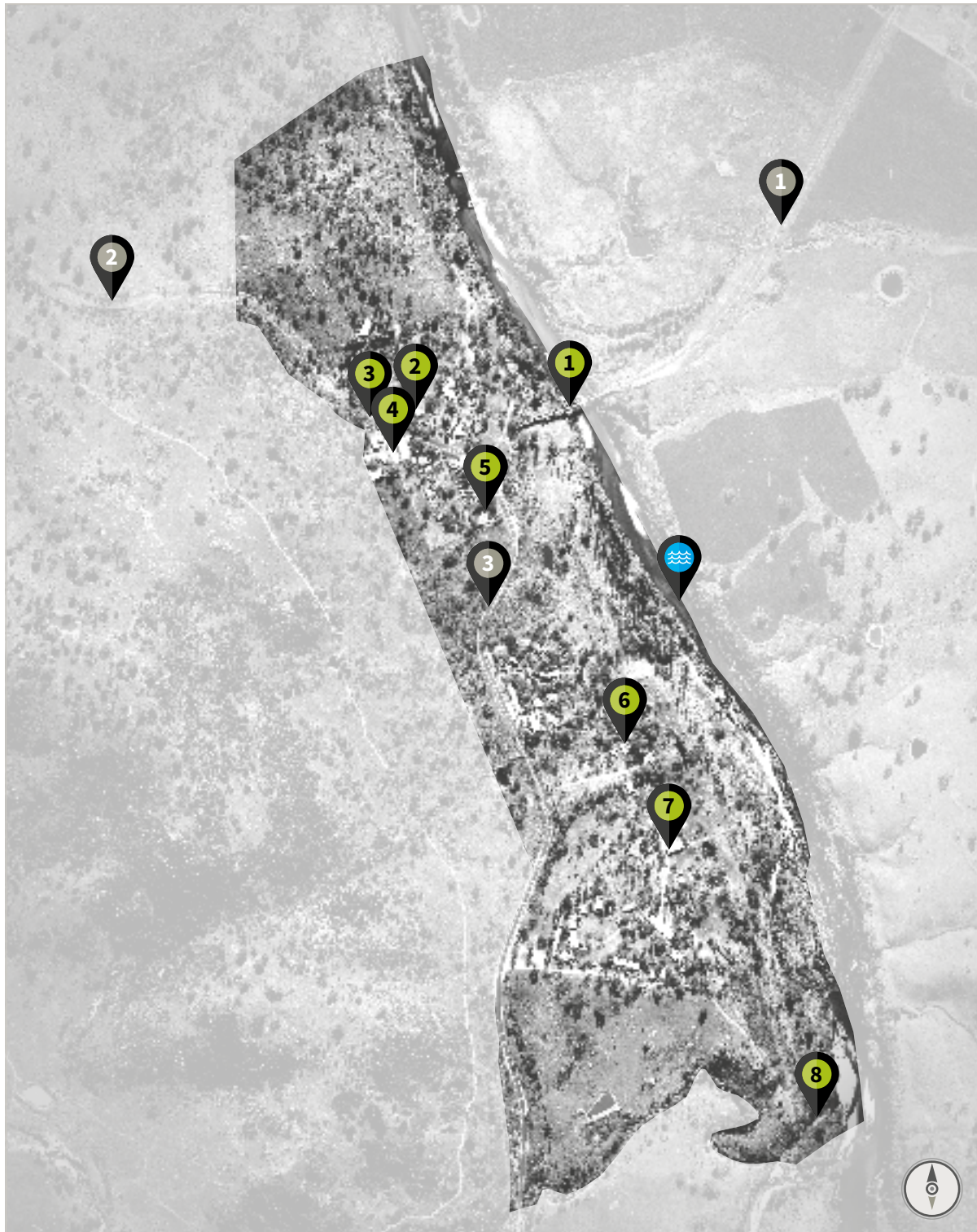
Feedback from the second stage of community engagement was gathered through a range of activities including the use of information displays, a drop-in session, feedback forms, individual written/emailed submissions, individual stakeholders and government interagency meetings. This report documents the key findings of these activities.

Key messages from the Stage 2 community engagement included:


- strong support for retaining and protecting Tharwa's rural village character and identity.
- strong support for continued maintenance and improvement of the River Corridor and Tharwa Bridge Reserve, including the introduction of new facilities at the Village Green (such as BBQ's, a nature-based playground or fitness equipment).
- strong support for the upgrade of the Tharwa Explorer Track and the development of wider regional path connections.
- strong support for the continued use of the Tharwa School as a community facility and educational hub.
- support for the provision of improved pedestrian and cycle connections within Tharwa, but concern about the proposed route.
- mixed views about the proposed residential land release, with concern about potential impacts on the village character.
- concern about inadequate infrastructure including water supply, telecommunications (mobile phone and internet) and sewerage.
- a preference to retain the established community facilities uses and to not rezone the existing Public Hall and tennis courts.

Community engagement will also be undertaken on any changes to the Territory Plan, as outlined in the village plan, through a separate engagement process.

Map 1: Tharwa Village Plan study area



LEGEND

1	THARWA BRIDGE	5	ST EDMUNDS ANGLICAN CHURCH	1	THARWA DRIVE
2	THARWA SCHOOL	6	CUPPACUMBALONG HOMESTEAD	2	TIDBINBILLA ROAD
3	GENERAL STORE	7	OUTWARD BOUND	3	NAAS ROAD
4	THARWA PUBLIC HALL	8	DE SALIS CEMETERY		MURRUMBIDGEE RIVER

INTRODUCTION

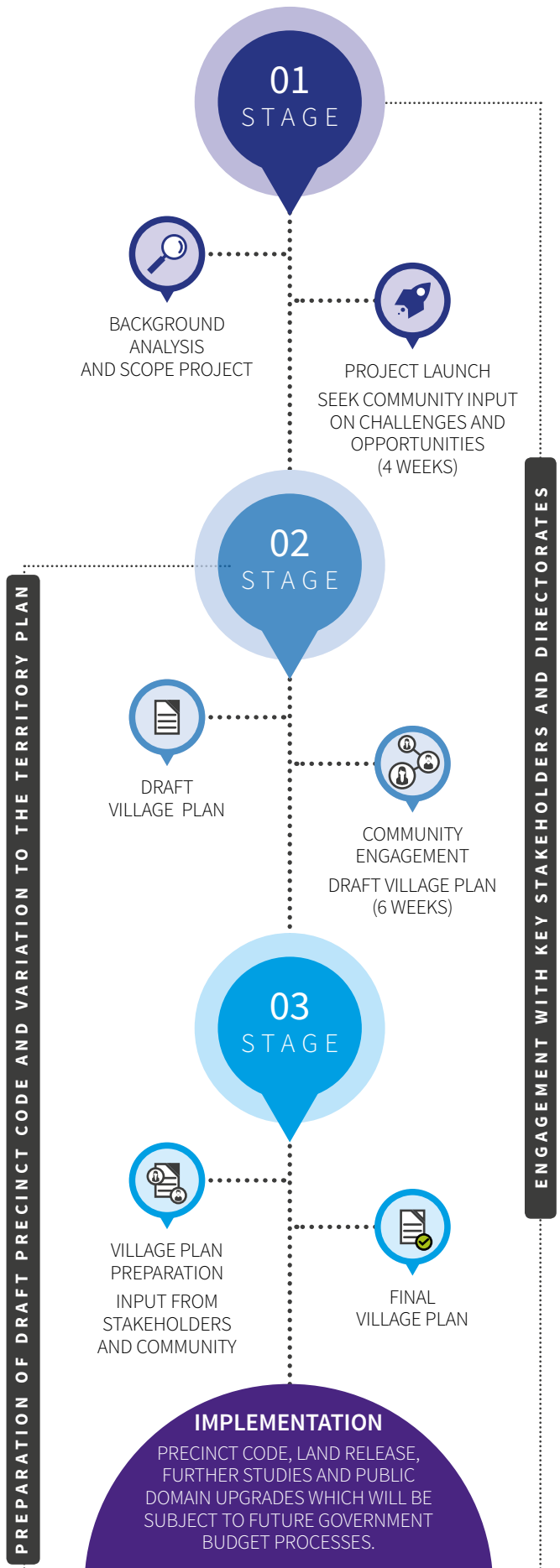
The ACT Government has prepared a village plan for Tharwa to provide a new vision, planning framework, planning principles and planning strategies to guide its enhancement and social, environmental and economic sustainability into the future. The village plan is the result of extensive community and stakeholder engagement and has been informed by background studies and analysis. The village plan outlines strategies and makes recommendations with the aim to provide an integrated and community supported vision for the village.

In 2012, key strategic planning documents for the ACT were introduced, including the ACT Planning Strategy and AP2: A New Climate Change Strategy and Action Plan for the ACT. The ACT Planning Strategy encourages the provision of strategies to retain the function and identity of regional villages and towns as distinct places, rather than a continuation of the Canberra urban area. It also includes supporting lifestyle opportunities afforded by the region to live in an urban or suburban environment, rural village, the 'bush' or on a farm.

The village plan study area is shown in **Map 1**.

This village plan sets out a vision, planning principles, spatial framework and planning strategies to guide Tharwa's long term sustainable future, depending on the progress of limited development and budget constraints. The process used to prepare the village plan is outlined in **Figure 1**.

Figure 1: Community engagement process



Community engagement forms an important part of the research and helps identify what is important about a place and how its character and quality can be enhanced and maintained.

During the development of this village plan, two stages of community engagement were undertaken. The first stage of engagement, identified the issues, challenges and opportunities. The second stage of engagement responded to the draft village plan, as shown in **Figure 1**. This engagement report presents the findings from Stage 2 engagement for the village plan. It summarises the activities undertaken and the key outcomes that were used to inform the development of the village plan.

COMMUNITY ENGAGEMENT APPROACH

The community engagement process for the village plan aimed to inform, consult and involve key stakeholders and the community at important stages of the planning process.

The village plan project team engaged with businesses, building owners and lessees, community groups and residents to ensure concerns and aspirations were understood for the development of the village plan. Engagement provided the community with an opportunity to meet with planners face-to-face at both stages of the village plan development to discuss issues and ideas and respond to the planning proposals in the draft village plan. While all feedback was considered, it should be noted that consensus could not always be achieved and not every comment could be accommodated within the village plan.

All engagement activities reflect the ACT Government's policies and guidelines on community engagement. Please refer to www.planning.act.gov.au for information on our approach to engagement.

COMMUNITY ENGAGEMENT OBJECTIVES

The objectives of community engagement on the village plan:

- Gather information from the community to inform the preparation of the village plan.
- Receive feedback on the draft village plan about the issues of interest for consideration in the village plan.
- Inform the public about the village planning process and what a village plan can and cannot do.
- Inform the public about how the village plan will implement key ACT Government policies, such as the ACT Planning Strategy and the ACT's climate action plan, AP2.
- Identify and consult with all key stakeholders.
- Communicate and consult with users of the village and the community within and surrounding the village.
- Provide an opportunity to consult broadly with the whole Canberra community via online engagement techniques.

COMMUNITY ENGAGEMENT ACTIVITIES

The development of the village plan was informed by two stages of community engagement. Community engagement in Stage 2 specifically sought community feedback on the draft village plan. This feedback was used to help refine the village plan before it was finalised for government consideration.

Table 1 provides an overview of participation in the different engagement activities in Stage 2.

Table 1: Overview of number of people who participated in Stage 2 engagement activities

ENGAGEMENT ACTIVITY	DATE	PARTICIPATION	
Display Posters Tuggeranong Library and Tharwa General Store	14 August 2017 – 22 September 2017	unknown	
‘Drop-in’ Session at Tharwa Bush Fair	10 September 2017	55 (approximate number of attendees)	
Online		<ul style="list-style-type: none"> • Page views¹: 637 • Unique views²: 404 • Downloads³: 213 	
Survey Responses		19 responses	17 online responses 2 hard copy responses
Other submissions (email, hard copy, by phone)		13 submissions	Email

Note: 1 - total number of visits to the site within the reporting period, 2 - visits to the site at least once within the reporting period, 3 - how many times the village plan was downloaded

ACT GOVERNMENT

Agencies responsible for service delivery and consequently the implementation of the village plan in the long term include the following:

- Chief Minister, Treasury and Economic Development Directorate (CMTEDD) identifies Territory-owned land appropriate to release for sale.
- Transport Canberra and City Services (TCCS) maintain path and road infrastructure and urban open spaces, including playgrounds and parkland.
- The Territory Plan unit within the Environment, Planning and Sustainable Development Directorate (EPSDD) translates the final endorsed village plan recommendations into the Territory Plan in the form of renewed precinct code.
- The Environment Protection Authority (EPA) considers noise and environmental pollution and relationships between different land-uses.
- The Justice and Community Safety Directorate (JACS) is responsible for the Emergency Services infrastructure and crime prevention.
- The Education Directorate is responsible for public schools in the area.
- ACT Parks and Conservation unit within EPSDD manages the ACT’s Parks and Conservation reserves.
- ACT Property Group within CMTEDD provides accommodation services on behalf of the ACT Government.
- Tourism Canberra leads the development and implementation of specific programs that enhance the value of tourism to the ACT economy.



INTERNET AND SOCIAL MEDIA

The internet and social media were used throughout the community engagement to provide project information, drop-in session details and opportunities for engagement and feedback.

Engagement opened to the public on 14 August 2017 and closed on 22 September 2017. The village plan project page on the EPSDD website provided users with links to the directorate's engagement tool 'Your say' at www.yoursay.act.gov.au. The 'Your say' website enabled discussion by providing users with interactive tools such as a survey and public forum. Information on this website included the draft village plan, display posters, site map, and relevant imagery.

Relevant links and social media contacts included:

- EPSDD project web page: www.act.gov.au/tharwa
- 'Your say' website
- Facebook: <https://www.facebook.com/EnvironPlan>
- Twitter: <https://twitter.com/EnvironPlan>
- Project email: Tharwa@act.gov.au

COMMUNITY ENGAGEMENT OUTCOMES

The outcomes of all stages of community engagement and in particular the outcomes from engagement on the draft village plan are summarised in the following pages. Key messages from the first and second stages of engagement are outlined first, followed by how the draft village plan responded to these messages. The feedback received during the draft village plan engagement follows in further detail.

Some comments may not be able to be resolved through the village plan process and will need to be discussed further by EPSDD with the responsible ACT Government directorates. Therefore, not all community feedback received throughout the process may be directly reflected in the final village plan.

OUTCOMES FROM STAGE 1 OF COMMUNITY ENGAGEMENT

The following table summarises the key messages from the community during Stage 1 of community engagement and how these issues were addressed in the draft village plan.

Key messages from Stage 1 of community engagement and the draft village plan responses.

Table 2: Stage 1 community engagement key messages

KEY MESSAGES	DRAFT VILLAGE PLAN RESPONSE
1. A desire for the village to retain its country charm, unspoilt by over-development.	Retain and enhance the existing rural village character and identity. Recommended principles include enhancing and considering significant heritage and natural features as part of limited future development including the historic street grid, significant buildings, Cuppacumbalong Homestead Precinct, the Tharwa Bridge Reserve and Lanyon Bowl visual catchment area.
2. Support for limited development that respects Tharwa's rural village character and heritage values and promotes adaptive re-use options that respect the heritage values of individual sites and places.	Promote adaptive re-use options that respect the heritage values of sites and places. Maintaining the existing fine-grain character of the village core and boundaries. Supporting a limited amount of residential development on existing vacant blocks. Enabling adaptive re-use of existing facilities and sites, while maintaining heritage character. Respecting the views to, from and within the village to the immediate village surrounds.
3. The Murrumbidgee River is valued for its contribution to the character of the village. The 'village green' could be upgraded to further strengthen the focus of the river for recreation and environmental activities.	Protect and conserve the natural environment of the river corridor. Continue to plant, manage and maintain the river corridor. Investigate ways to improve the amenity and recreational opportunities of the 'village green' to make it comfortable and welcoming for locals and visitors. Upgrade and enhance the Tharwa Explorer Track to make it accessible for multiple users.
4. Improvements are needed to water, sewage, telecommunications and road infrastructure.	Upgrade pedestrian, cycling and road infrastructure within the village, including the introduction of traffic calming measures and road safety improvements. Improving the energy and water efficiency of public buildings. Showcasing off-the-grid sustainable water and sewerage technologies.
5. Concerns regarding the closure of the primary school and public access to Cuppacumbalong Homestead.	Recommended enhancing the existing character of the Tharwa school and investigating opportunities to expand the range of community uses. Assist and support tourism development opportunities for Cuppacumbalong Precinct consistent with the lease purpose clause.
6. Support for the growth and promotion of an arts and craft precinct.	Recommended assistance and support to explore new ways to promote arts and crafts activities in the Cuppacumbalong Precinct. Provide improved cycling and pedestrian connections with the Village Core. Upgrading landscaping and signage to provide better amenity for visitors to the arts and crafts precinct.

OUTCOMES FROM STAGE 2 OF COMMUNITY ENGAGEMENT

INFORMATION DISPLAYS

Information displays included a series of posters illustrating the key proposals included in the draft village plan. The displays also provided information about the various options available to provide feedback and hard copy survey forms were made available on site.

Table 3: Information displays

LOCATION	DATE	LENGTH OF TIME
Tuggeranong Library	14 August 2017 – 22 September 2017	6 weeks
Tharwa General Store	14 August 2017 – 22 September 2017	6 weeks

'DROP-IN' SESSION

A 'drop-in' session was held in conjunction with the Tharwa Bush Fair on 10 September 2017. The stall provided poster displays and copies of the Tharwa Draft Village Plan for engagement with the community.

Table 4: 'Drop-in' session

LOCATION	DATE	APPROXIMATE NUMBER OF ATTENDEES
Tharwa Bush Fair	10 September 2017	55

The 'drop-in' session was hosted by EPSDD planning officers who were available to answer questions on the draft village plan, together with a TCCS project officer who was available to answer questions regarding the provision of infrastructure. A number of staff from JACS were also on hand for discussions relating to fire and emergency services. The Minister for Planning and Land Management, Mick Gentleman MLA, also attended the 'drop-in' session to discuss the village plan with the community.

Through the course of the day, the 'drop-in' session was visited by approximately 55 people, who were a mix of both local residents and members of the wider ACT community, particularly those from south Tuggeranong. Key messages received at the 'drop-in' session included:

- General support for the release of the five existing vacant residential blocks of land within the village.
- General support for the recommended upgrades to Tharwa Bridge Reserve and suggestions that this could include BBQ facilities, outdoor exercise equipment or a children's playground.
- Support for the proposed cycle and pedestrian paths within the Tharwa village and concern regarding the safety for cyclists on roads to and from Tharwa.
- Support for the recommended upgrade to the Tharwa Explorer Track and suggestions that this could include wider links to the existing Lanyon homestead, Namadgi Visitor's Centre and Gigerline Nature Reserve.
- An interest in the increased use and promotion of existing heritage assets in Tharwa including Cuppacumbalong Homestead and Cuppacumbalong woolshed.
- General concern about the need to upgrade the existing non-potable water supply infrastructure, particularly for fire-fighting purposes.
- General concern about closure of the Tharwa Primary School and desire to see its use expanded as a community facility.

- Concern about the placement of street trees as part of proposed landscape upgrades in North Street, particularly in relation the existing services and access driveways.
- Concern about ongoing anti-social behaviour in the car park under the Tharwa Bridge and suggestions that this could be addressed by the installation of a lockable gate to restrict night-time access.
- Other matters included the wider community’s interest in visiting Tharwa, however it would be good if there were more shops or cafés open in the village.

SURVEY RESPONSES

Survey forms were made available in paper format to the public at the information displays at the Tuggeranong Library, at the ‘drop-in’ session and also as an online survey. All comments were considered during the preparation of the village plan. Not all questions were mandatory, so not all questions were answered by all of the participants. A total of 19 people completed the feedback form (17 online and 2 as hard copies).

SURVEY RESULTS

QUESTION 1: *The draft village plan recommends 5 key principles to guide the future of the village. Please number your order of preference (1 for highest, 5 for lowest)*

The draft village plan recommended 5 key principles to guide the future of the village. Survey participants were asked to rank the order of preference for these principles. Of the twenty (20) survey participants, ten (10) participants responded to this question.

1	Retain and enhance the existing rural village character and identity
2	Protect and conserve the environmental value of Tharwa’s natural heritage
3	Promote sustainability – e.g. energy and water efficiencies, local food production, village farming and community gardens
4	Provide locally-based economic, tourism, recreation and community opportunities for long-term viability
5	Ensure Tharwa is accessible and well connected – i.e. pedestrian, cyclist, equestrian and vehicular connectivity

QUESTION 2: *Five existing vacant blocks of land are recommended for new residences in the draft village plan. Do you agree with this proposal? (Select one option)*

Five existing vacant residential blocks of land within the village are recommended to be released for sale in the draft village plan. The existing vacant blocks are proposed to be released for single residential development. Participants were asked if they agreed with this and were given three options (agree, neutral, disagree) to respond. All twenty (20) survey participants responded to this question.

4	Agree
4	Neutral
12	Disagree

Respondents were given the opportunity to provide additional comments or suggestions on this question. Eight (8) respondents added suggestions/comments. Four (4) participants specifically stated opposition to this proposal. Key messages are summarised as follows:

Key concerns include:

- About increasing traffic and traffic noise
- That this could open the way to further development
- Do not want to see Tharwa become part of Canberra’s urban sprawl – keep the unique rural character
- Could adversely impact the heritage appeal of the village
- This may destroy the character of the village
- This will place additional pressure on infrastructure (e.g. water supply)

Key suggestions include:

- Strict building controls should be required (e.g. single dwelling, conservative building style)
- Need to remember the rural origin and character of Tharwa

QUESTION 3: *The draft village plan identifies opportunities for local recreation that links business activity and the natural and cultural heritage attractions. Do you agree with this proposal? (Select one option)*

The draft village plan identifies opportunities for local recreation that links business activity and the natural and cultural heritage attractions. Respondents were asked if they agreed with this proposal and were given three options (agree, neutral, disagree) to respond. All twenty (20) survey participants responded to this question.



Respondents were given the opportunity to provide additional comments or suggestions on this question. Eight (8) respondents added suggestions/comments. Two (2) participants specifically stated opposition to this proposal. Key messages are summarised as follows:

One respondent specifically supported the proposal for recreation that links business activity and the natural/cultural heritage attractions as they “love coming to Tharwa to use the river and the village green”.

Key concerns include:

- Potential for increased traffic
- Loss of charm as the village is currently quiet and the quiet is valued
- Need more information in order to be able to give an opinion
- These opportunities could be fostered without increasing the residential population in Tharwa

Key suggestions include:

- Support for improving Tharwa as the gateway to Namadgi National Park and nature reserves
- Visitors enjoy coming to Tharwa for the river and village green
- Need for all community leases to be open for the general public
- Need to have something open to attract people to come, stay and spend time in Tharwa



QUESTION 4

QUESTION: *Do you have any other general comments or suggestions regarding the Tharwa Draft Village Plan?*

Sixteen (16) survey participants provided a response to this question. Key themes raised are as follows:

THEME	COMMON RESPONSE
Retain the rural character/protect/preserve	3
Improve cycling infrastructure (e.g. safety on roads into/out of Tharwa; have a mountain bike facility like Stromlo nearby)	3
Concerns raised about parking (limited and impact on emergency services access)	2
Concerns about increase in traffic (including safety, speed, noise and undesirable behaviours)	2
Need more boutique shops to increase spending in Tharwa	2
Don't support the proposal (generally)/leave alone	2
Communications (mobile phone and internet access) need to be improved	2
Request for more time to consult	2
Provide BBQ and toilets and more paths close to the river	1
Suggest better use/marketing of historic significance for tourism purposes	1
Don't rezone the community facility	1
Open the school for public use	1
No more residential development	1
Release the five blocks for residential development	1

BACKGROUND AND DEMOGRAPHICS

Of the twenty survey participants, about half of the survey participants were male and the other half female. “X – Intersex, indeterminate, unspecified” was available but was not selected. One participant chose not to identify their gender. **Figure 5** shows the gender of the survey respondents.

Figure 5: Gender

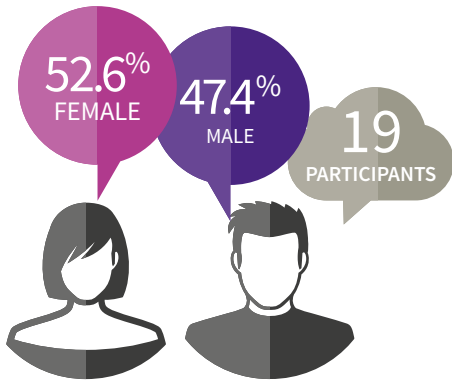


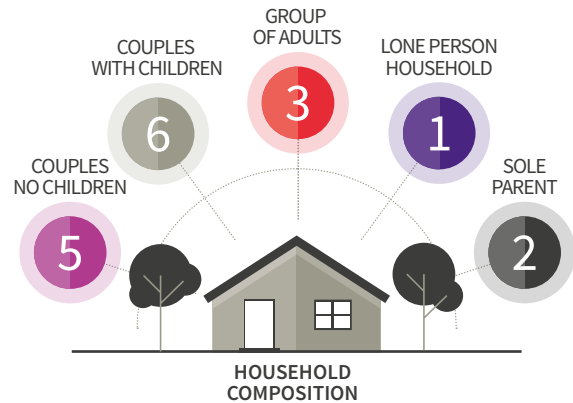
Figure 6 shows the age of respondents. There were no respondents from the 0-19 age group. The highest number of respondents were in the 50 to 59 year age bracket, followed by the 60+ age group.

Figure 6: Demographics



A total of 17 respondents completed a question asking about their household composition. Each of the categories listed was represented as follows in **Figure 7**.

Figure 7: Household composition



OTHER SUBMISSIONS

This section includes feedback received through email submissions.

A project web page was created and a project specific email address was provided as follows:

- ESPDD project web page: www.act.gov.au/tharwa
- ‘Your say’ project web page: <http://www.yoursay.act.gov.au>
- Project email: Tharwa@act.gov.au

The project email address and information on the web pages allowed people to raise individual concerns and submit their proposals in more detail. All ideas and proposals were considered as part of the preparation of the final village plan. Comments received are categorised on page 17 under common themes. Where a number of feedback items were repeatedly raised by separate individuals, these numbers have been identified.

Thirteen (13) email submissions were received and where permitted, can be viewed on the Tharwa village plan page at www.planning.act.gov.au

As there were a limited number of formal submissions, it should be noted that these comments may not be representative of the broader population’s viewpoint.

Table 5: Common themes of comments:

THEME	COMMENT	COMMON RESPONSE
Rural village character and identity	Support to retain and protect Tharwa’s rural village character and identity	3
Activation and renewal of community facilities	Support for increased use of Tharwa School as a community hub and/or educational facility	4
	Opposition to proposed rezoning of Tharwa village hall and tennis courts from community facilities to commercial use	6
	Concern about the proposed activation of Block 6, Section 7 (existing block on the corner of North and Union Street)	2
Infrastructure (water/sewerage/ telecommunications)	Concern about inadequate non-potable water and fire-fighting supply infrastructure	5
	Inadequate telecommunications (mobile phone and internet) infrastructure	5
	Need for improved sewerage infrastructure	2
Release of vacant residential blocks	Support for the proposed release of some or all vacant residential blocks	3
	Opposition to the proposed release of vacant residential blocks	2
Tharwa Bridge recreation area	Support for improved facilities at the village green, such as the introduction of a “nature-based” playground	2
	Improve car parking facilities under Tharwa Bridge	2
	Provide a secure gate to reduce anti-social behaviour under Tharwa Bridge	2
Pedestrian/cycle/equestrian connections	Concern about the proposed route for pedestrian/cycle paths within Tharwa village	5
	Support for upgrade of the Tharwa Explorer’s Track	2
	Improve path connections to regional destinations, such as Namadgi Visitor’s Centre and Lanyon Homestead	3
	Improve equestrian route connections between Tharwa Village and Namadgi Visitor’s Centre incorporating the Bicentennial National Trail	2
	Infrastructure upgrades are needed to provide safe routes for cyclists on roads to and from Tharwa	4
	Infrastructure upgrades are needed to provide safe livestock crossing on roads to and from Tharwa	1

THEME	COMMENT	COMMON RESPONSE
Landscape/public realm improvements	Concern about proposed upgrades to the general store forecourt adversely impacting on rural character, fire vehicle access and car parking	3
	Concern about landscape upgrades to the main street and the location of proposed additional street trees	2
	Support for proposed arts and crafts precinct landscape and signage upgrades	1

INDIVIDUAL STAKEHOLDER MEETINGS

Meetings were held with key stakeholders to gain further insight and follow up on Stage 2 community engagement input into issues that could be addressed in the village plan. The key stakeholders are stated below:

DATE	PARTICIPANT	ATTENDED
2 November 2017	Tharwa Community Association	3
15 December 2017	Tharwa Community Association	2

SUMMARY OF ANALYSIS

The following summary highlights the key messages from Stage 2 of community engagement on the draft village plan for Tharwa and how they are addressed in the final village plan. As there were a limited number of formal submissions, it should be noted that these comments may not be representative of the broader population's viewpoint.

Summary of key messages and how the village plan responds:

KEY MESSAGES FROM ENGAGEMENT	PROPOSALS AND ACTIONS OF THE VILLAGE PLAN
Strong support for retaining and protecting Tharwa's rural village character and identity.	The village plan aims to protect the village character through its recommendations and specific planning controls to be incorporated in the Tharwa Precinct Code.
Strong support for continued maintenance and improvement of the River Corridor and Tharwa Bridge Reserve, including the introduction of new facilities at the Village Green (such as BBQ's, a nature-based playground or fitness equipment)	The village plan supports and recommends the continued maintenance and improvement of the River Corridor and Tharwa Bridge Reserve, including the introduction of new facilities at the Village Green.
Strong support for upgrade of the Tharwa Explorer Track and the development of wider regional path connections (such as with the Namadgi Visitor's Centre, the Gigerline Nature Reserve and Lanyon Homestead) including improved equestrian connections through Tharwa incorporating the Bicentennial National Trail.	The village plan recommends the upgrade of the Tharwa Explorer Track, including the consideration of improved regional path connections and equestrian routes incorporating the Bicentennial National Trail.

KEY MESSAGES FROM ENGAGEMENT	PROPOSALS AND ACTIONS OF THE VILLAGE PLAN
Strong support for the continued use of Tharwa School as a community facility and educational hub.	The village plan recommends consideration of opportunities for the expanded use of the Tharwa School as a community and educational hub.
Support for upgrades to pedestrian and cycle connections within Tharwa, but concern about the proposed route. Strong support for improved safety on cycling routes to and from Tharwa.	Proposed infrastructure upgrades within Tharwa provide for improved pedestrian and cyclist safety and the route has been amended in the village plan to respond to community concerns. The village plan also recommends consideration for improved safety on cycling routes to and from Tharwa.
Support for landscaping upgrades and public domain improvements (such as signage, parking and street furniture), but concern about some aspects, including the location of street trees and upgrades to the General Store forecourt.	The village plan provides a basis for potential landscape upgrades through its recommendations. However, future upgrades will be subject to budgetary consideration and detailed landscape design in consultation with the local community.
Mixed views about the proposed residential land release for the five existing vacant blocks, with some support, but also concern about potential impacts on the village character.	The village plan aims to protect the village character through specific planning controls. Design guidelines will be developed for new and redeveloped buildings in conjunction with the village plan and incorporated in the Tharwa Precinct Code.
Concern about inadequate water supply, telecommunications, sewerage and road infrastructure.	The village plan recommends upgrades to non-potable firefighting water supply, supports upgrade of telecommunications infrastructure and recommends best-practice, off-grid sewerage infrastructure for residential development. The plan also supports future road upgrades, including improved safety for cyclists and safe crossing points for livestock on roads to and from Tharwa.
Concern about potential loss of community facilities due to proposed re-zoning of the Public Hall and Tennis Courts.	The village plan recommends retaining the existing community land use for the Public Hall and Tennis Courts.

NEXT STAGE

All comments and submissions received from the community, stakeholders and government agencies were analysed and considered in the development of the Tharwa Village Plan.

Information on the village plan is available at www.planning.act.gov.au

APPENDIX

Where permission has been given, the submissions received can be viewed on the Tharwa village plan page at: www.planning.act.gov.au

