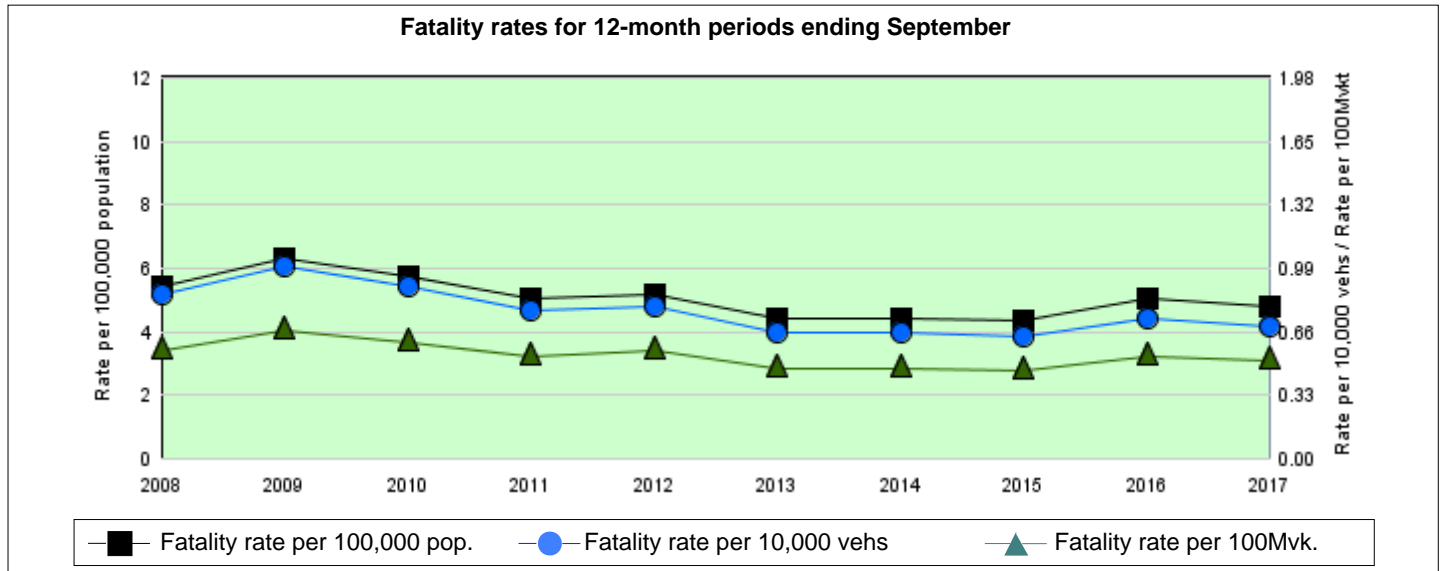


Monthly Bulletin of Preliminary Traffic Crash Data September 2017

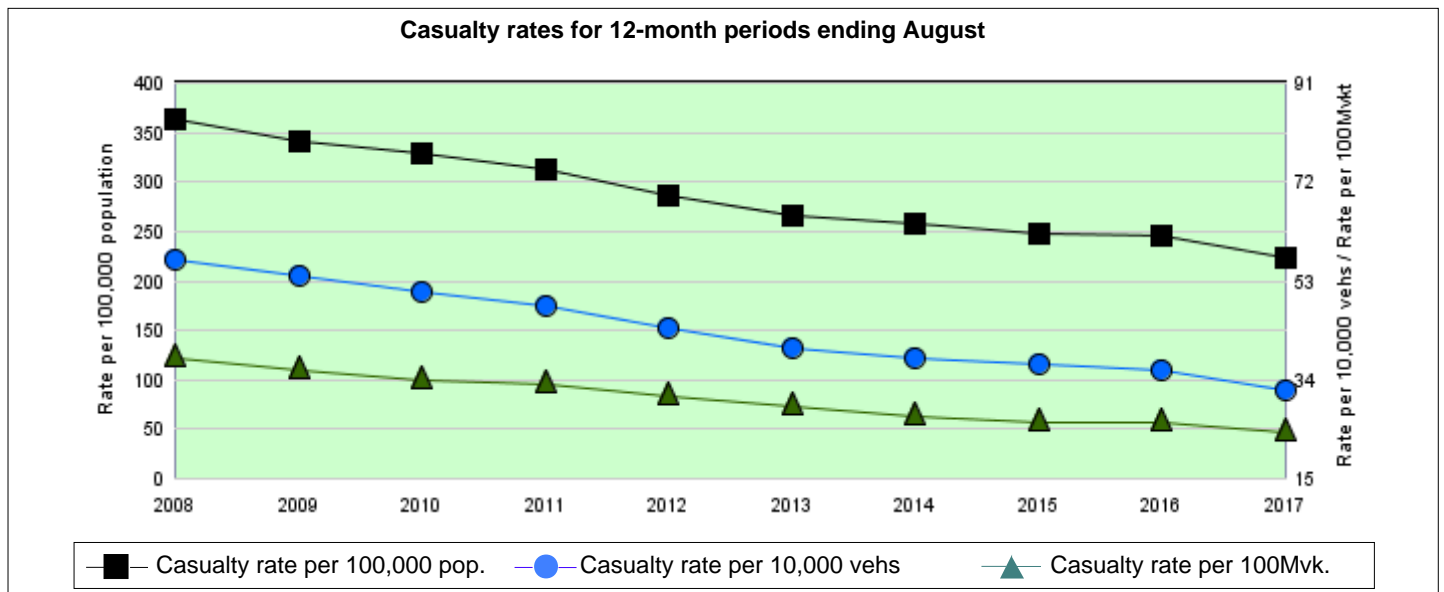
Fatality rates for 12-month period ending September 2017

Number of fatalities	373
Rate per 100,000 population ¹	4.8
Rate per 10,000 vehicles ²	0.7
Rate per 100 million vehicle kilometres travelled ³	0.5



Casualty rates for 12-month period ending August 2017

Number of casualties*	17,421
Rate per 100,000 population ¹	223
Rate per 10,000 vehicles ²	32
Rate per 100 million vehicle kilometres travelled ³	24



¹ Based on preliminary estimated population data

² Based on RMS vehicle registration data

³ Travel estimates are based on Australian Bureau of Statistics Survey of Motor Vehicle Use.

* Based on preliminary data supplied by the NSW Police from the Computerised Operational Policing System (COPS) database. Casualty statistics are 1 month in arrears.

TABLE OF CONTENTS

SECTION 1: MONTHLY COMPARISON AND KEY POINTS	1
SECTION 2: MONTHLY STATISTICS	2
2.1 FATALITIES	2
2.2 FATAL CRASHES	3
2.3 COMPARISON WITH OTHER STATES	4
2.3.1 Fatalities	4
2.3.2 Fatal Crashes	4
SECTION 3: TRENDS	5
3.1 FATALITIES - OVERALL TREND	5
3.1.1 Number of fatalities for 12 months ending September 2017, road user class	5
3.1.2 Number of fatalities for 12 months ending September 2017, sex of fatality	5
3.1.3 Number of fatalities for 12 months ending September 2017, age of fatality	6
3.1.4 Number of fatalities for 12 months ending September 2017, urbanisation	7
3.1.5 Number of fatalities for 12 months ending September 2017, RMS Region	7
3.2 FACTORS INVOLVED IN FATAL CRASHES	8
3.2.1 Number of fatal crashes for 12 months ending September 2017, speeding involvement	8
3.2.2 Number of fatal crashes for 12 months ending September 2017, fatigue involvement	8
3.2.3 Number of fatal crashes for 12 months ending August 2017, alcohol involvement	8
3.3 SAFETY DEVICE USAGE OF FATALITIES	9
3.3.1 Number of road vehicle fatalities for 12 months ending September 2017, safety device usage, road user class	9
3.4 MOTOR VEHICLE CONTROLLERS INVOLVED IN FATAL CRASHES	10
3.4.1 Number of motor vehicle controllers involved in fatal crashes for 12 months ending September 2017, sex of controller	10
3.4.2 Number of motor vehicle controllers involved in fatal crashes for 12 months ending September 2017, age of controller	10
3.4.3 Number of motor vehicle controllers involved in fatal crashes for 12 months ending August 2017, alcohol involvement	10
3.5 CASUALTIES - OVERALL TREND	11
3.5.1 Twelve months comparison	11
3.5.2 Year-to-date comparison	11

Explanatory Notes

* Data are preliminary and are compiled on the first working day of the month.

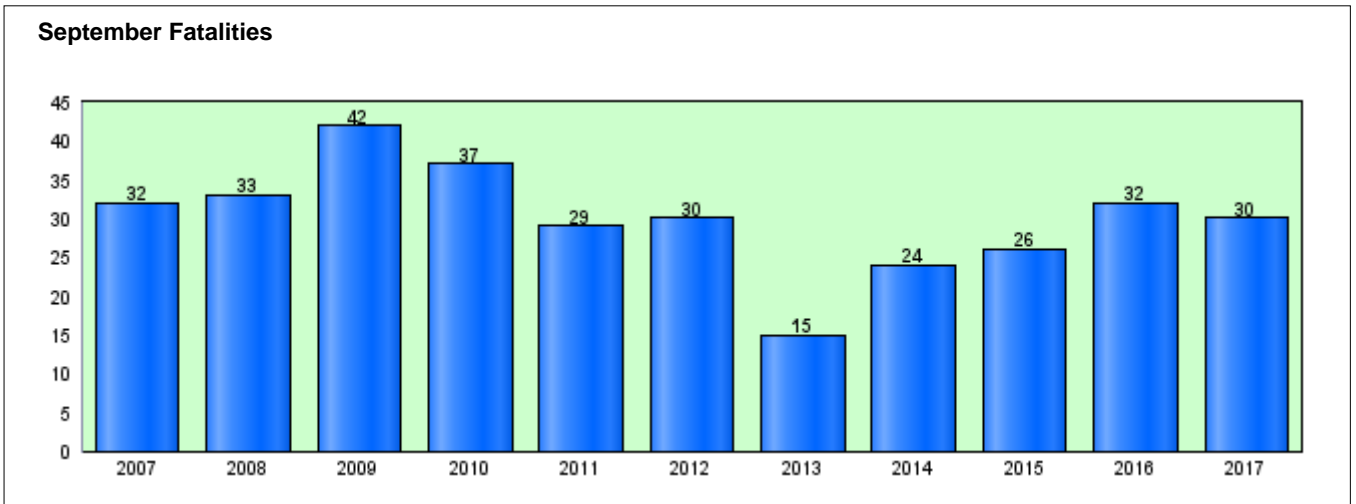
* Casualty figures reported in Section 3.5 are based on preliminary data supplied by the NSW Police Force.

They are comprised of all casualties, including fatalities.

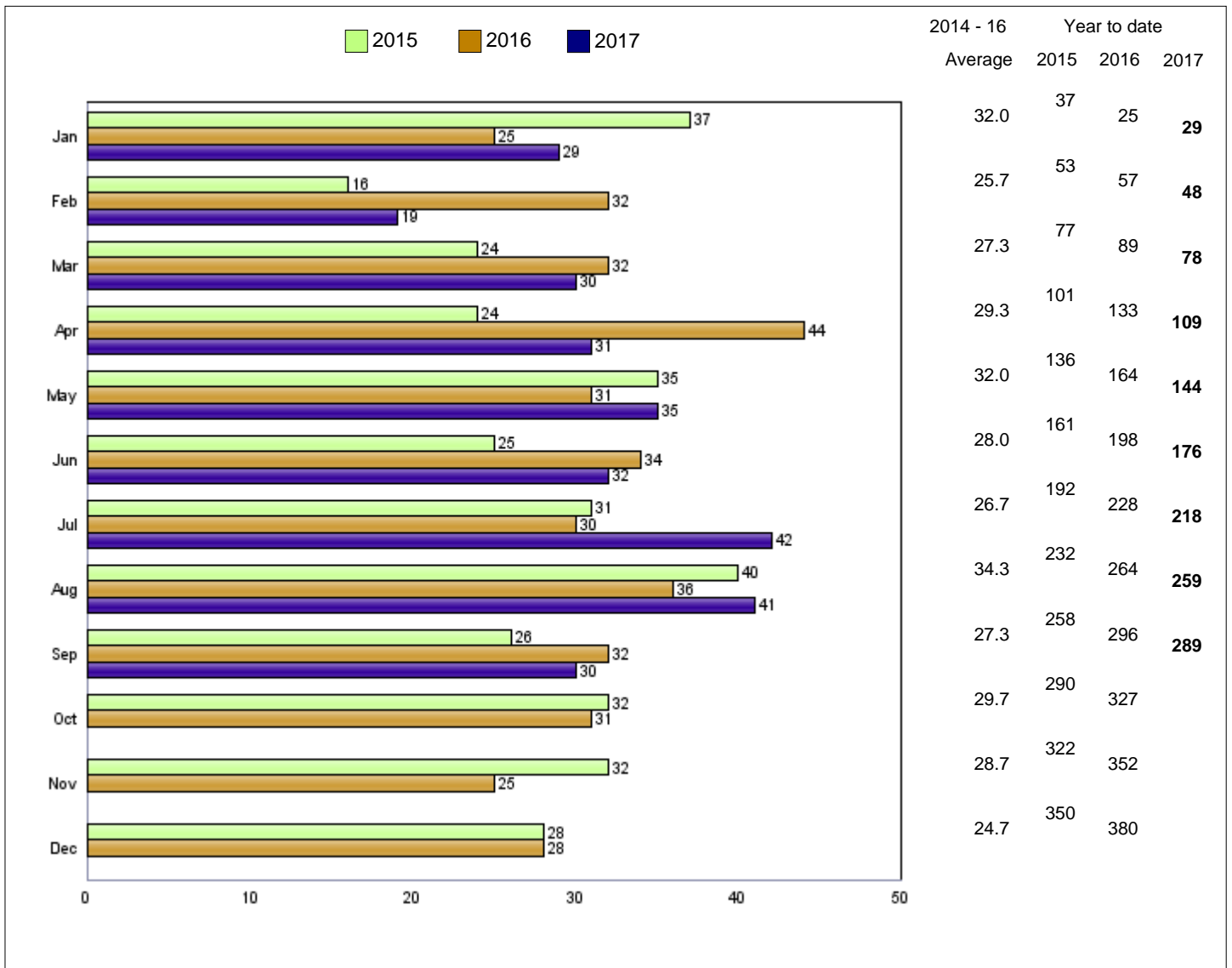
* Vehicle kilometres travelled are estimates based on changes in fuel consumption since the Australian Bureau of Statistics Survey of Motor Vehicle Use.

SECTION 1: MONTHLY COMPARISON AND KEY POINTS

NSW road fatalities for September: 2007 - 2017



NSW road fatalities: monthly comparison



This month's key points

There were 30 fatalities during September 2017, two fewer fatalities (6 per cent) than September 2016, the equal second highest September total since 2010 (with 37 fatalities).

During the nine month period ending September 2017, there were 289 fatalities, seven fewer fatalities (2 per cent) than 2016, the second highest January to September total since 2010 (with 303 fatalities).

SECTION 2: MONTHLY STATISTICS

2.1 FATALITIES

	Sep 2017	Sep 2016	Differ- ence	Year to Date 2017	Year to Date 2016	Differ- ence
Road User Class						
Driver	13	15	-2	140	143	-3
Passenger	7	8	-1	56	43	13
Pedestrian	6	3	3	46	56	-10
Motorcyclist ¹	4	6	-2	43	51	-8
Pedal cyclist ¹	0	0	0	4	3	1
Other	0	0	0	0	0	0
Total	30	32	-2	289	296	-7
Age (years)						
0-4	0	0	0	4	4	0
5-16	1	0	1	11	10	1
17-20	4	2	2	32	31	1
21-25	1	4	-3	19	27	-8
26-29	0	2	-2	12	13	-1
30-39	5	3	2	44	41	3
40-49	7	4	3	43	50	-7
50-59	2	4	-2	30	34	-4
60-69	5	2	3	38	33	5
70+	5	11	-6	56	53	3
Unknown	0	0	0		0	0
Total	30	32	-2	289	296	-7
Sex						
Male	22	23	-1	198	218	-20
Female	8	9	-1	91	78	13
Total²	30	32	-2	289	296	-7
RMS Region						
Sydney	10	8	2	77	81	-4
Northern	9	9	0	54	61	-7
Hunter	3	5	-2	50	58	-8
Southern	3	3	0	42	36	6
South West	4	2	2	34	22	12
Western	1	5	-4	32	38	-6
Total	30	32	-2	289	296	-7
Road Classification						
Freeway/motorway	0	1	-1	7	4	3
State highway	11	9	2	95	74	21
Other classified road ³	7	11	-4	86	101	-15
Unclassified road	12	11	1	101	117	-16
Total	30	32	-2	289	296	-7

¹ Includes passengers

² Includes unknown sex

³ Includes Main Road, Secondary Road and Tourist Road

2.2 FATAL CRASHES

	Sep 2017	Sep 2016	Differ- ence	Year to Date 2017	Year to Date 2016	Differ- ence
Urbanisation						
Sydney Metropolitan Area	7	8	-1	67	77	-10
Newcastle Metropolitan Area	0	0	0	8	16	-8
Wollongong Metropolitan Area	2	1	1	7	5	2
Country urban (speed limit =<80km/h)	10	10	0	65	69	-4
Country non-urban (speed limit >80km/h)	9	11	-2	116	110	6
Total	28	30	-2	263	277	-14
Location Type						
Intersection	3	7	-4	50	53	-3
Non-Intersection	25	23	2	213	224	-11
Total	28	30	-2	263	277	-14
Route						
Princes Highway	0	1	-1	5	5	0
Hume Highway	2	0	2	11	3	8
Great Western Highway	0	0	0	2	3	-1
New England Highway	1	2	-1	10	7	3
Pacific Highway	6	1	5	16	21	-5
Newell Highway	1	1	0	5	3	2
All other routes	18	25	-7	214	235	-21
Total	28	30	-2	263	277	-14
Road Classification						
Freeway/motorway	0	1	-1	7	4	3
State highway	11	8	3	81	68	13
Other classified road ¹	7	10	-3	81	94	-13
Unclassified road	10	11	-1	94	111	-17
Total	28	30	-2	263	277	-14
RMS Region						
Sydney	8	8	0	71	78	-7
Northern	9	7	2	50	55	-5
Hunter	3	5	-2	48	55	-7
Southern	3	3	0	36	34	2
South West	4	2	2	31	21	10
Western	1	5	-4	27	34	-7
Total	28	30	-2	263	277	-14
Type of Crash						
Car crash	21	20	1	180	186	-6
Light truck crash	5	4	1	58	68	-10
Heavy truck crash	6	8	-2	59	40	19
Heavy rigid truck crash	2	4	-2	24	24	0
Articulated truck crash	4	4	0	38	16	22
Bus crash	0	2	-2	7	9	-2
Motorcycle crash	4	6	-2	44	50	-6
All fatal crashes ²	28	30	-2	263	277	-14

¹ Includes Main Road, Secondary Road and Tourist Road

² The type of crash categories are not mutually exclusive and must not be added together.

2.3 COMPARISON WITH OTHER STATES

Please note that data included in this section represent statistics for the previous month¹

2.3.1 Fatalities

	Aug 2017	Aug 2016	Differ- ence	Year to date 2017	Year to date 2016	Differ- ence
State/Territory						
New South Wales	41	36	5	259	264	-5
Victoria	24	31	-7	166	202	-36
Queensland	18	17	1	161	163	-2
South Australia	17	6	11	72	53	19
Western Australia	11	17	-6	97	124	-27
Tasmania	2	20	-18	21	24	-3
Northern Territory	0	6	-6	20	29	-9
Australian Capital Territory	1	0	1	4	6	-2
Total	114	133	-19	800	865	-65

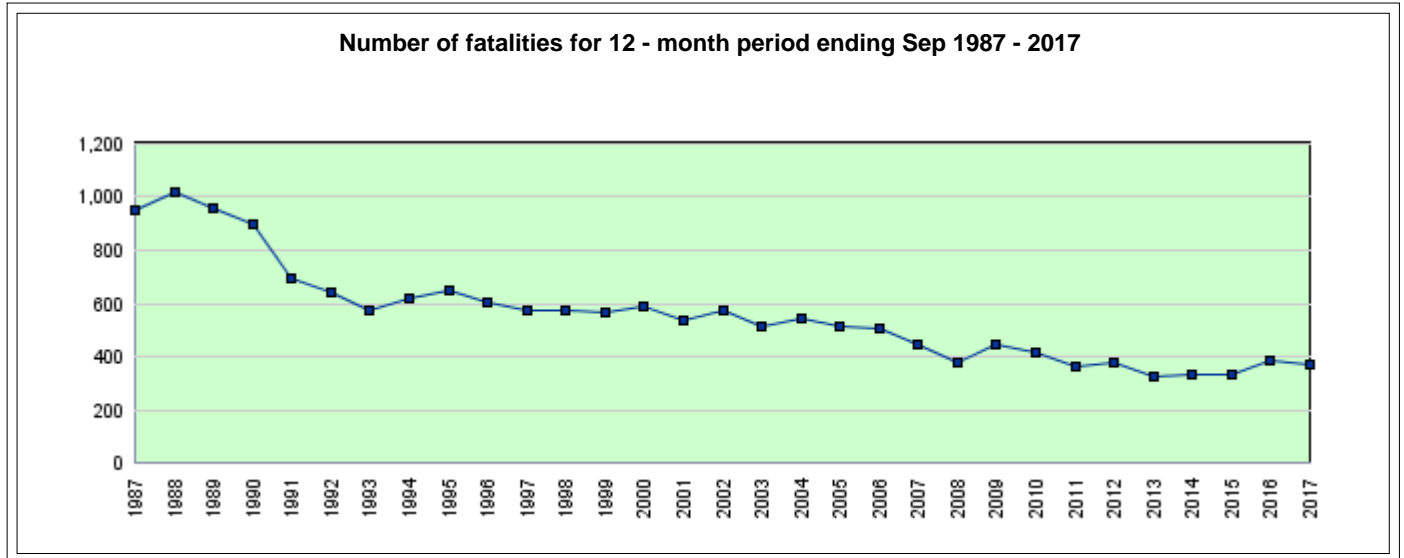
2.3.2 Fatal Crashes

	Aug 2017	Aug 2016	Differ- ence	Year to date 2017	Year to date 2016	Differ - ence
State/Territory						
New South Wales	39	35	4	235	247	-12
Victoria	20	30	-10	157	191	-34
Queensland	16	17	-1	148	153	-5
South Australia	16	6	10	68	46	22
Western Australia	9	14	-5	90	110	-20
Tasmania	2	0	2	20	21	-1
Northern Territory	0	5	-5	17	26	-9
Australian Capital Territory	1	0	1	4	6	-2
Total	103	107	-4	739	800	-61

¹ Source: Commonwealth Department of Infrastructure and Regional Development

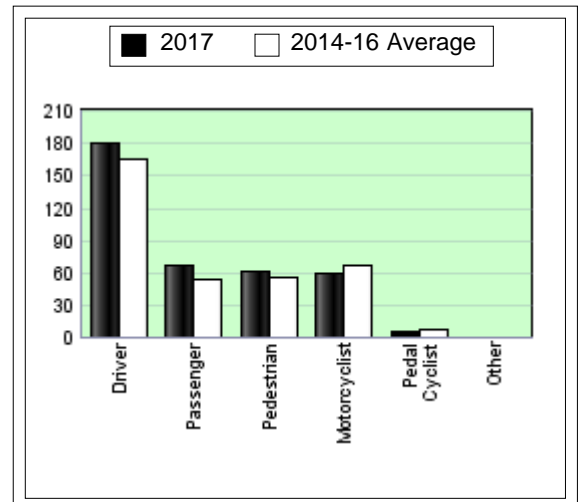
SECTION 3: TRENDS

3.1 FATALITIES - OVERALL TREND



3.1.1 Number of fatalities for 12 months ending September 2017, road user class

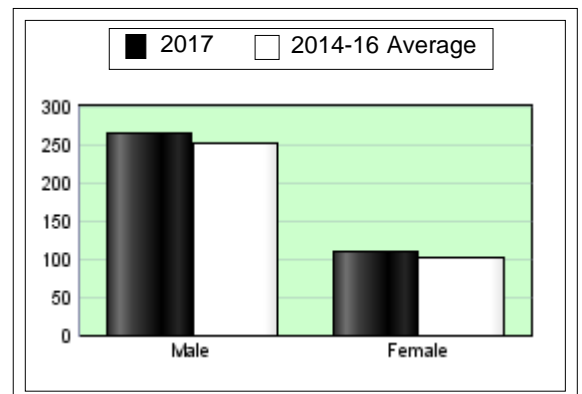
Road User Class ¹	2017	2014-16 Average	Change %
Driver	180	165.0	9.1%
Passenger	67	54.7	22.6%
Pedestrian	61	56.3	8.3%
Motorcyclist	59	66.7	-11.5%
Pedal Cyclist	6	8.0	-25.0%
Other	0	0.0	N/A
Total	373	350.7	6.4%



¹ The categories motorcyclist and pedal cyclist include passengers.

3.1.2 Number of fatalities for 12 months ending September 2017, sex of fatality

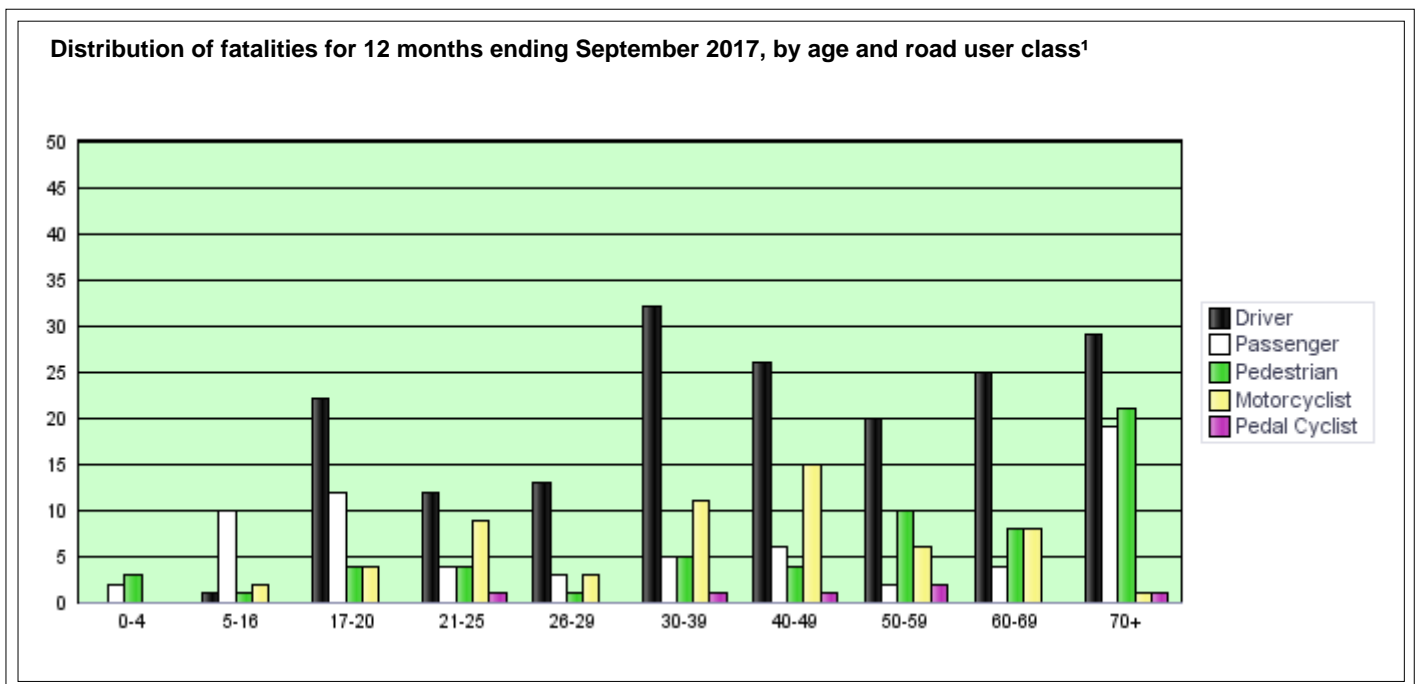
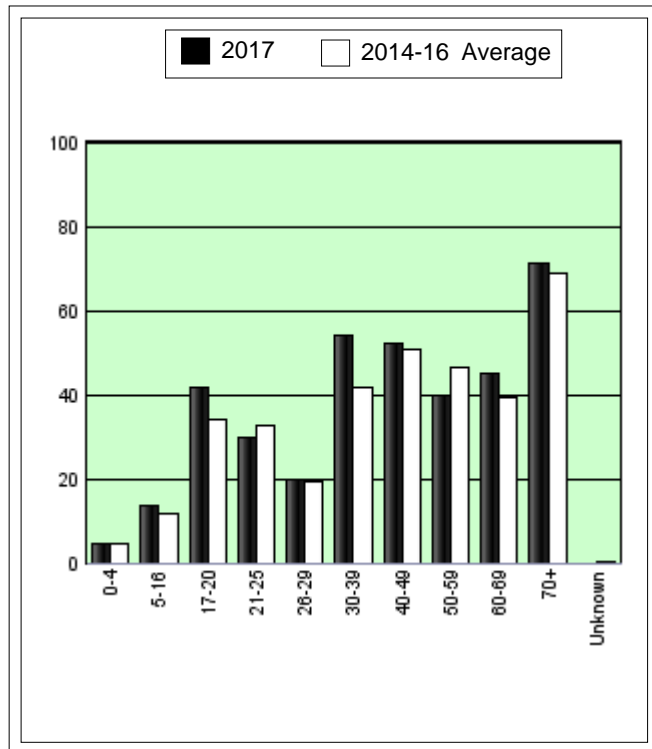
Sex of fatality	2017	2014-16 Average	Change %
Male	263	249.7	5.3%
Female	110	101.0	8.9%
Total²	373	350.7	6.4%



² Includes unknown sex

3.1.3 Number of fatalities for 12 months ending September 2017, age of fatality

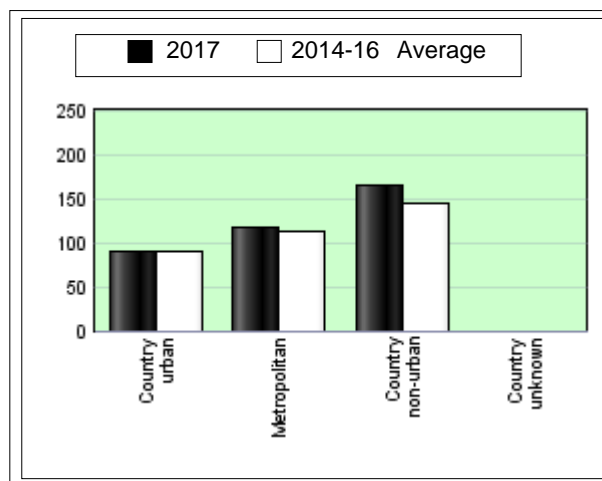
Age	2017	2014-16 Average	% Change
0-4	5	4.7	7.1%
5-16	14	12.0	16.7%
17-20	42	34.0	23.5%
21-25	30	32.7	-8.2%
26-29	20	19.7	1.7%
30-39	54	42.0	28.6%
40-49	52	51.0	2.0%
50-59	40	46.3	-13.7%
60-69	45	39.3	14.4%
70+	71	68.7	3.4%
Unknown	0	0.3	N/A
Total	373	350.7	6.4%



¹ The categories motorcyclist and pedal cyclist include passengers.

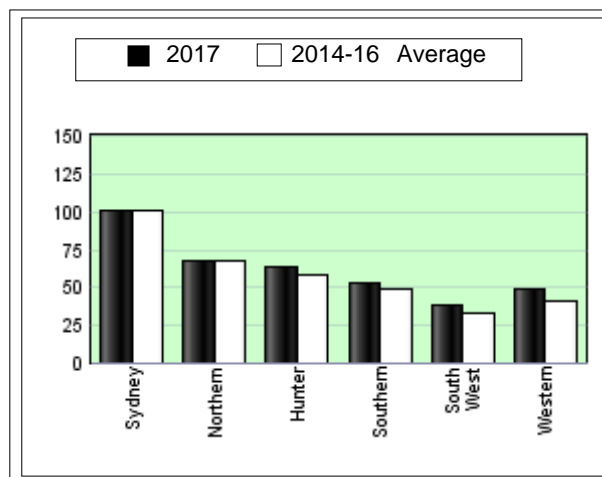
3.1.4 Number of fatalities for 12 months ending September 2017, urbanisation

Urbanisation	2017	2014-16 Average	% Change
Country urban	90	90.3	-0.4%
Metropolitan	117	114.3	2.3%
Country non-urban	166	146.0	13.7%
Country unknown	0	0.0	N/A
Total	373	350.7	6.4%



3.1.5 Number of fatalities for 12 months ending September 2017, RMS Region

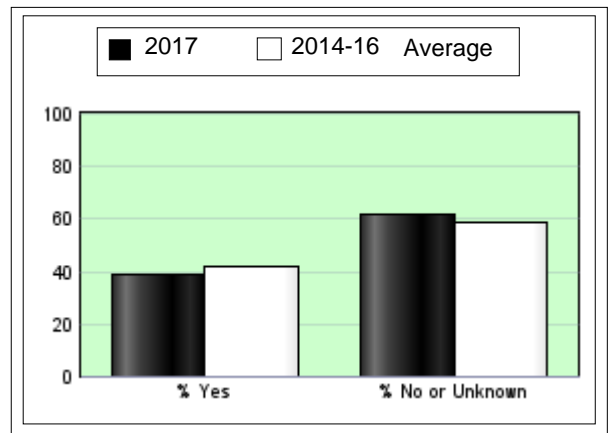
RMS Region	2017	2014-16 Average	% Change
Sydney	101	100.3	0.7%
Northern	67	67.7	-1.0%
Hunter	64	58.7	9.1%
Southern	53	49.0	8.2%
South West	39	33.7	15.8%
Western	49	41.3	18.5%
Total	373	350.7	6.4%



3.2 FACTORS INVOLVED IN FATAL CRASHES

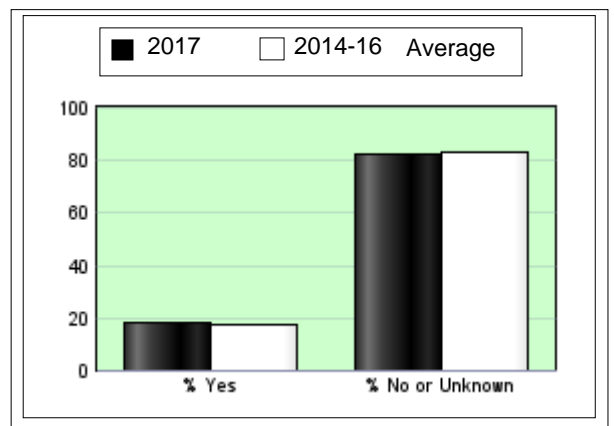
3.2.1 Number of fatal crashes for 12 months ending September 2017, speeding involvement

Excessive Speed ?	2017	2014-16 Average	% Change
Yes	132	135.3	-2.5%
% Yes	38.6 %	41.4 %	
No or Unknown	210	191.3	9.8%
% No or Unknown	61.4 %	58.6 %	
Total	342	326.7	4.7%



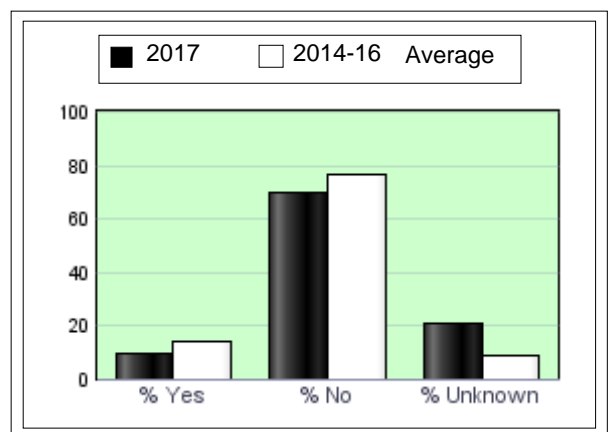
3.2.2 Number of fatal crashes for 12 months ending September 2017, fatigue involvement

Fatigue ?	2017	2014-16 Average	% Change
Yes	62	57.0	8.8%
% Yes	18.1 %	17.4 %	
No or Unknown	280	269.7	3.8%
% No or Unknown	81.9 %	82.6 %	
Total	342	326.7	4.7%



3.2.3 Number of fatal crashes for 12 months ending August 2017, alcohol involvement

Alcohol ? ¹	2017	2014-16 Average	% Change
Yes	34	46.3	-26.6%
% Yes	9.9 %	14.4 %	
No	238	245.7	-3.1%
% No	69.2 %	76.4 %	
Unknown	72	29.7	142.7%
% Unknown	20.9 %	9.2 %	
Total	344	321.7	6.9%

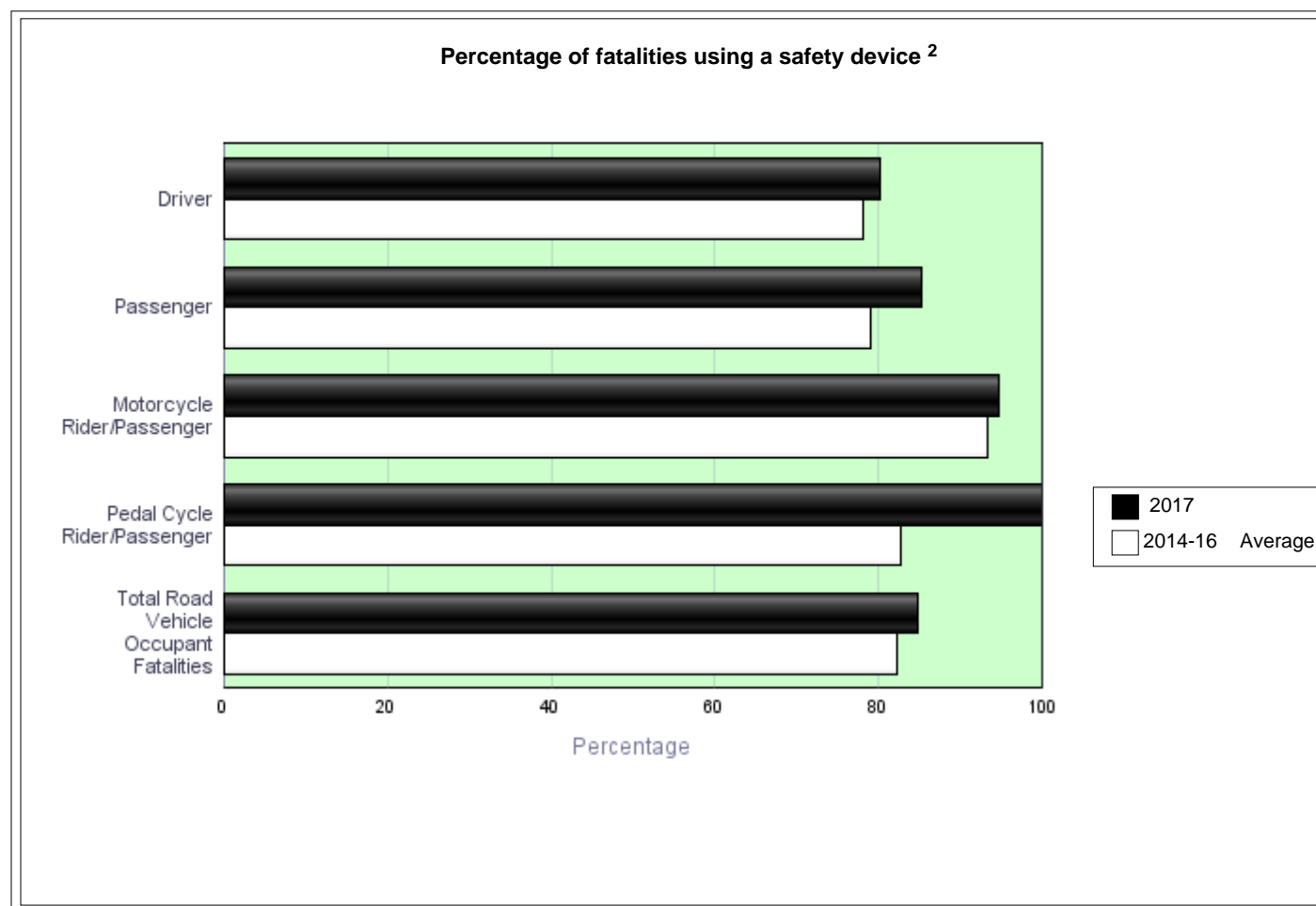


¹ Data for blood alcohol concentration are available up to August 2017 inclusive.

3.3 SAFETY DEVICE USAGE OF FATALITIES

3.3.1 Number of road vehicle fatalities for 12 months ending September 2017, safety device usage, road user class

Safety Device?	Driver		Passenger		Motorcycle Rider/Passenger		Pedal Cycle Rider/Passenger		Total Road Vehicle Occupant Fatalities ¹	
	2017	2014-16 Average	2017	2014-16 Average	2017	2014-16 Average	2017	2014-16 Average	2017	2014-16 Average
	Unknown	29	24.7	13	8.3	2	2.0	0	0.3	44
Worn	121	109.7	46	36.7	54	60.3	6	6.3	227	213.0
Not Worn	30	30.7	8	9.7	3	4.3	0	1.3	41	46.0
Total	180	165.0	67	54.7	59	66.7	6	8.0	312	294.3



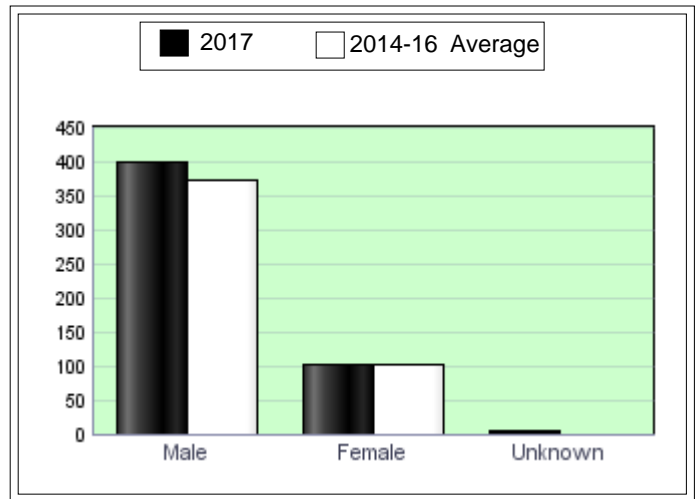
¹ Includes fatalities of other or unknown road user class.

² Excludes cases of unknown safety device usage

3.4 MOTOR VEHICLE CONTROLLERS INVOLVED IN FATAL CRASHES

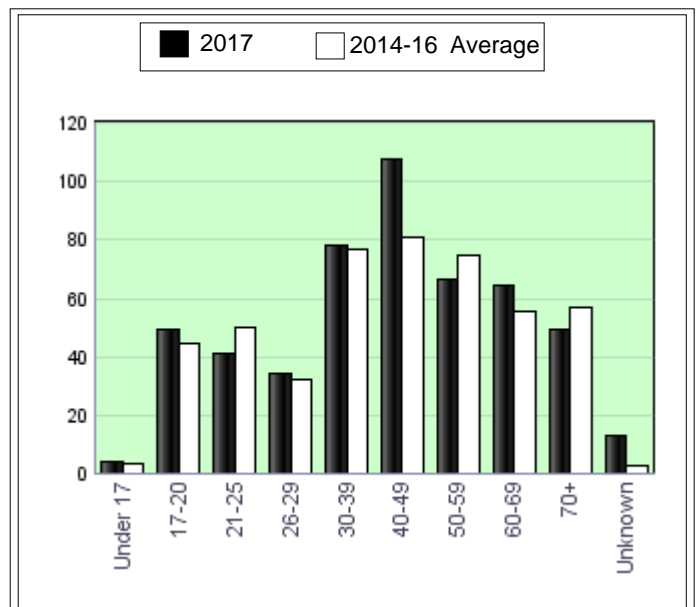
3.4.1 Number of motor vehicle controllers involved in fatal crashes for 12 months ending September 2017, sex of controller

Sex	2017	2014-16 Average	% Change
Male	398	371.3	7.2%
Female	102	103.0	-1.0%
Unknown	5	1.7	200.0%
Total	505	476.0	6.1%



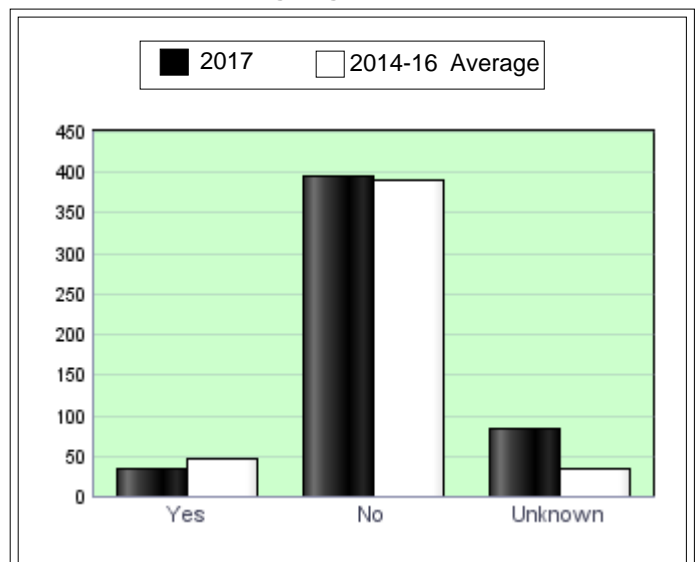
3.4.2 Number of motor vehicle controllers involved in fatal crashes for 12 months ending September 2017, age of controller

Age	2017	2014-16 Average	% Change
Under 17	4	3.7	9.1%
17-20	49	44.3	10.5%
21-25	41	49.7	-17.4%
26-29	34	32.3	5.2%
30-39	78	76.3	2.2%
40-49	107	80.3	33.2%
50-59	66	74.7	-11.6%
60-69	64	55.3	15.7%
70+	49	56.7	-13.5%
Unknown	13	2.7	387.5%
Total	505	476.0	6.1%



3.4.3 Number of motor vehicle controllers involved in fatal crashes for 12 months ending August 2017, alcohol involvement

Alcohol Involvement ¹	2017	2014-16 Average	% Change
Yes	34	46.7	-27.1%
No	393	387.7	1.4%
Unknown	83	35.3	134.9%
Total	510	469.7	8.6%



¹ Data for blood alcohol concentration are available up to August 2017 inclusive.

3.5 CASUALTIES - OVERALL TREND

Casualty figures presented in this section are based on preliminary data supplied by the NSW Police from the Computerised Operational Policing System (COPS) database.

RMS Region figures are estimates based on combinations of NSW Police Local Area Commands. These combinations do not correspond exactly to RMS Region boundaries.

3.5.1 Twelve months comparison

RMS Region	12 Months ending Aug, 2017	12 Months ending Aug, 2016	% Change
Sydney	10,118	11,043	-8.4%
Northern	1,700	1,851	-8.2%
Hunter	2,110	2,408	-12.4%
Southern	1,783	1,899	-6.1%
South West	638	649	-1.7%
Western	1,072	1,063	0.8%
Total	17,421	18,913	-7.9%

3.5.2 Year-to-date comparison

RMS Region	Jan to Aug, 2017	Jan to Aug, 2016	% Change
Sydney	6,794	7,362	-7.7%
Northern	1,134	1,215	-6.7%
Hunter	1,380	1,571	-12.2%
Southern	1,201	1,238	-3.0%
South West	412	410	0.5%
Western	737	668	10.3%
Total	11,658	12,464	-6.5%