

This report provides information to support an application to remove, destroy or lop native vegetation in accordance with the *Guidelines for the removal, destruction or lopping of native vegetation*. The report **is not an assessment by DELWP** of the proposed native vegetation removal. Native vegetation information and offset requirements have been determined using spatial data provided by the applicant or their consultant.

Date of issue: 09/11/2018

Report ID: PRE_2018_060

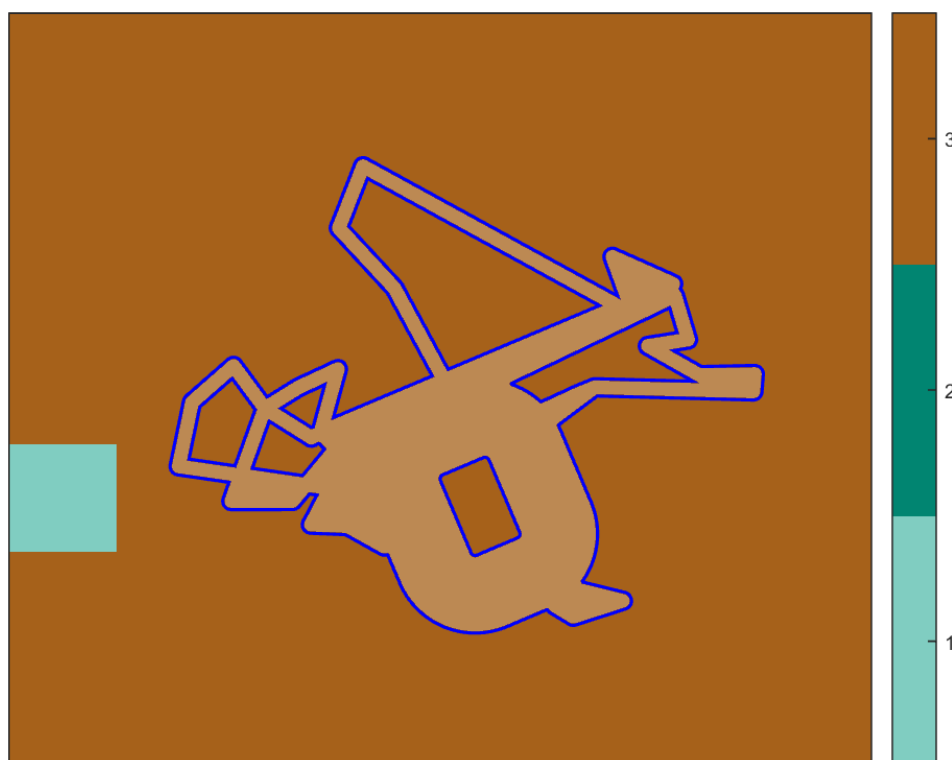
Time of issue: 2:03 pm

Project ID	Losses_v4_Veg_Losses_540_The_Boulevard_Ivanhoe_East
------------	---

Assessment pathway

Assessment pathway	Detailed Assessment Pathway
Extent including past and proposed	0.498 ha
Extent of past removal	0.000 ha
Extent of proposed removal	0.498 ha
No. Large trees proposed to be removed	0
Location category of proposed removal	Location 3 The native vegetation is in an area where the removal of less than 0.5 hectares could have a significant impact on habitat for one or more rare or threatened species. The native vegetation is also in an area mapped as an endangered Ecological Vegetation Class (as per the statewide EVC map).

1. Location map



Offset requirements if a permit is granted

Any approval granted will include a condition to obtain an offset that meets the following requirements:

Species offset amount¹	0.184 species units of habitat for Grey-headed Flying-fox, <i>Pteropus poliocephalus</i> 0.204 species units of habitat for Pink Mountain-correa, <i>Correa lawrenceana</i> var. <i>cordifolia</i>
Large trees	0 trees

NB: values within tables in this document may not add to the totals shown above due to rounding

Appendix 1 includes information about the native vegetation to be removed

Appendix 2 includes information about the rare or threatened species mapped at the site.

Appendix 3 includes maps showing native vegetation to be removed and extracts of relevant species habitat importance maps

¹ The species offset amount(s) required is the sum of all species habitat units in Appendix 1.

Next steps

Any proposal to remove native vegetation must meet the application requirements of the Detailed Assessment Pathway and it will be assessed under the Detailed Assessment Pathway.

If you wish to remove the mapped native vegetation you are required to apply for a permit from your local council. Council will refer your application to DELWP for assessment, as required. **This report is not a referral assessment by DELWP.**

This *Native vegetation removal report* must be submitted with your application for a permit to remove, destroy or lop native vegetation.

Refer to the *Guidelines for the removal, destruction or lopping of native vegetation* (the Guidelines) for a full list of application requirements. This report provides information that meets the following application requirements:

- The assessment pathway and reason for the assessment pathway
- A description of the native vegetation to be removed (partly met)
- Maps showing the native vegetation and property (partly met)
- Information about the impacts on rare or threatened species.
- The offset requirements determined in accordance with section 5 of the Guidelines that apply if approval is granted to remove native vegetation.

Additional application requirements must be met including:

- Topographical and land information
- Recent dated photographs
- Details of past native vegetation removal
- An avoid and minimise statement
- A copy of any Property Vegetation Plan that applies
- A defensible space statement as applicable
- A statement about the Native Vegetation Precinct Plan as applicable
- A site assessment report including a habitat hectare assessment of any patches of native vegetation and details of trees
- An offset statement that explains that an offset has been identified and how it will be secured.

© The State of Victoria Department of Environment, Land, Water and Planning Melbourne 2018

This work is licensed under a Creative Commons Attribution 4.0 International licence. You are free to re-use the work under that licence, on the condition that you credit the State of Victoria as author. The licence does not apply to any images, photographs or branding, including the Victorian Coat of Arms, the Victorian Government logo and the Department of Environment, Land, Water and Planning logo. To view a copy of this licence, visit <http://creativecommons.org/licenses/by/3.0/au/deed.en>

Authorised by the Victorian Government, 8 Nicholson Street, East Melbourne.

For more information contact the DELWP Customer Service Centre 136 186

www.delwp.vic.gov.au

Disclaimer

This publication may be of assistance to you but the State of Victoria and its employees do not guarantee that the publication is without flaw of any kind or is wholly appropriate for your particular purposes and therefore disclaims all liability for any error, loss or other consequence which may arise from you relying on any information in this publication.

Obtaining this publication does not guarantee that an application will meet the requirements of Clauses 52.16 or 52.17 of the Victoria Planning Provisions and Victorian planning schemes or that a permit to remove native vegetation will be granted.

Notwithstanding anything else contained in this publication, you must ensure that you comply with all relevant laws, legislation, awards or orders and that you obtain and comply with all permits, approvals and the like that affect, are applicable or are necessary to undertake any action to remove, lop or destroy or otherwise deal with any native vegetation or that apply to matters within the scope of Clauses 52.16 or 52.17 of the Victoria Planning Provisions and Victorian planning schemes.

Appendix 1: Description of native vegetation to be removed

The species-general offset test was applied to your proposal. This test determines if the proposed removal of native vegetation has a proportional impact on any rare or threatened species habitats above the species offset threshold. The threshold is set at 0.005 per cent of the mapped habitat value for a species. When the proportional impact is above the species offset threshold a species offset is required. This test is done for all species mapped at the site. Multiple species offsets will be required if the species offset threshold is exceeded for multiple species.

Where a zone requires species offset(s), the species habitat units for each species in that zone is calculated by the following equation in accordance with the Guidelines:

$$\text{Species habitat units} = \text{extent} \times \text{condition} \times \text{species landscape factor} \times 2, \text{ where the species landscape factor} = 0.5 + (\text{habitat importance score}/2)$$

The species offset amount(s) required is the sum of all species habitat units per zone

Where a zone does not require a species offset, the general habitat units in that zone is calculated by the following equation in accordance with the Guidelines:

$$\text{General habitat units} = \text{extent} \times \text{condition} \times \text{general landscape factor} \times 1.5, \text{ where the general landscape factor} = 0.5 + (\text{strategic biodiversity value score}/2)$$

The general offset amount required is the sum of all general habitat units per zone.

Native vegetation to be removed

Information provided by or on behalf of the applicant in a GIS file							Information calculated by EnSym					
Zone	Type	BioEVC	BioEVC conservation status	Large tree(s)	Partial removal	Condition score	Polygon Extent	Extent without overlap	SBV score	HI score	Habitat units	Offset type
1-1a	Patch	gipp0056	Endangered	0	no	0.390	0.025	0.025	1.000	0.810	0.017	11280 Grey-headed Flying-fox <i>Pteropus poliocephalus</i>
										0.006	0.019	505466 Pink Mountain-correa <i>Correa lawrenceana</i> var. <i>cordifolia</i>
1-1b	Patch	gipp0056	Endangered	0	yes	0.195	0.473	0.473	0.996	0.805	0.166	11280 Grey-headed Flying-fox <i>Pteropus poliocephalus</i>
										0.119	0.184	505466 Pink Mountain-correa <i>Correa lawrenceana</i> var. <i>cordifolia</i>

Appendix 2: Information about impacts to rare or threatened species' habitats on site

This table lists all rare or threatened species' habitats mapped at the site.

Species common name	Species scientific name	Species number	Conservation status	Group	Habitat impacted	% habitat value affected
Grey-headed Flying-fox	<i>Pteropus poliocephalus</i>	11280	Vulnerable	Dispersed	Top ranking map	0.0067
Pink Mountain-correa	<i>Correa lawrenceana</i> var. <i>cordifolia</i>	505466	Vulnerable	Highly Localised Habitat	Habitat importance map	0.0065
Grey-headed Flying-fox	<i>Pteropus poliocephalus</i>	11280	Vulnerable	Dispersed	Habitat importance map	0.0003
Australian Mudfish	<i>Neochanna cleaveri</i>	4703	Critically endangered	Dispersed	Habitat importance map	0.0002
Yarra Pygmy Perch	<i>Nannoperca obscura</i>	4882	Vulnerable	Dispersed	Habitat importance map	0.0001
Keferstein's Tree Frog	<i>Litoria dentata</i>	528551	Vulnerable	Dispersed	Habitat importance map	0.0001
Grey Billy-buttons	<i>Craspedia canens</i>	504643	Endangered	Dispersed	Habitat importance map	0.0001
Australian Grayling	<i>Prototroctes maraena</i>	4686	Vulnerable	Dispersed	Habitat importance map	0.0001
Lacey River Buttercup	<i>Ranunculus amplus</i>	505019	Rare	Dispersed	Habitat importance map	0.0001
Veined Spear-grass	<i>Austrostipa rudis</i> subsp. <i>australis</i>	504940	Rare	Dispersed	Habitat importance map	0.0000
Glossy Grass Skink	<i>Pseudemoia rawlinsoni</i>	12683	Vulnerable	Dispersed	Habitat importance map	0.0000
Salt Lawrenca	<i>Lawrenca spicata</i>	501888	Rare	Dispersed	Habitat importance map	0.0000
Veiled Fringe-sedge	<i>Fimbristylis velata</i>	501369	Rare	Dispersed	Habitat importance map	0.0000
Green Scentbark	<i>Eucalyptus fulgens</i>	505175	Rare	Dispersed	Habitat importance map	0.0000
Common Sandpiper	<i>Actitis hypoleucos</i>	10157	Vulnerable	Dispersed	Habitat importance map	0.0000
Growling Grass Frog	<i>Litoria raniformis</i>	13207	Endangered	Dispersed	Habitat importance map	0.0000
Round-leaf Pomaderris	<i>Pomaderris vacciniifolia</i>	502675	Endangered	Dispersed	Habitat importance map	0.0000
Spurred Helmet-orchid	<i>Corybas aconitiflorus</i>	500835	Rare	Dispersed	Habitat importance map	0.0000
Swamp Skink	<i>Lissolepis coventryi</i>	12407	Vulnerable	Dispersed	Habitat importance map	0.0000

Fringed Helmet-orchid	<i>Corybas fimbriatus</i>	500839	Rare	Dispersed	Habitat importance map	0.0000
Swamp Everlasting	<i>Xerochrysum palustre</i>	503763	Vulnerable	Dispersed	Habitat importance map	0.0000
White-bellied Sea-Eagle	<i>Haliaeetus leucogaster</i>	10226	Vulnerable	Dispersed	Habitat importance map	0.0000
Plains Yam-daisy	<i>Microseris scapigera s.s.</i>	504657	Vulnerable	Dispersed	Habitat importance map	0.0000
Lewin's Rail	<i>Lewinia pectoralis pectoralis</i>	10045	Vulnerable	Dispersed	Habitat importance map	0.0000
Small Golden Moths	<i>Diuris basaltica</i>	501473	Endangered	Dispersed	Habitat importance map	0.0000
Floodplain Fireweed	<i>Senecio campylocarpus</i>	507136	Rare	Dispersed	Habitat importance map	0.0000
Sticky Wattle	<i>Acacia howittii</i>	500044	Rare	Dispersed	Habitat importance map	0.0000
Little Egret	<i>Egretta garzetta nigripes</i>	10185	Endangered	Dispersed	Habitat importance map	0.0000
Black-tailed Godwit	<i>Limosa limosa</i>	528553	Vulnerable	Dispersed	Habitat importance map	0.0000
Pale Swamp Everlasting	<i>Coronidium gunnianum</i>	504655	Vulnerable	Dispersed	Habitat importance map	0.0000
Purple Blown-grass	<i>Lachnagrostis punicea subsp. filifolia</i>	504222	Rare	Dispersed	Habitat importance map	0.0000
Australasian Bittern	<i>Botaurus poiciloptilus</i>	10197	Endangered	Dispersed	Habitat importance map	0.0000
Purple Diuris	<i>Diuris punctata</i>	501084	Vulnerable	Dispersed	Habitat importance map	0.0000
Blue-billed Duck	<i>Oxyura australis</i>	10216	Endangered	Dispersed	Habitat importance map	0.0000
Australian Little Bittern	<i>Ixobrychus dubius</i>	10195	Endangered	Dispersed	Habitat importance map	0.0000
Australian Painted Snipe	<i>Rostratula australis</i>	10170	Critically endangered	Dispersed	Habitat importance map	0.0000
Eastern Great Egret	<i>Ardea modesta</i>	10187	Vulnerable	Dispersed	Habitat importance map	0.0000
Intermediate Egret	<i>Ardea intermedia</i>	10186	Endangered	Dispersed	Habitat importance map	0.0000
Musk Duck	<i>Biziura lobata</i>	10217	Vulnerable	Dispersed	Habitat importance map	0.0000
Common Bent-wing Bat (eastern ssp.)	<i>Miniopterus schreibersii oceanensis</i>	61342	Vulnerable	Dispersed	Habitat importance map	0.0000
Grey Goshawk	<i>Accipiter novaehollandiae novaehollandiae</i>	10220	Vulnerable	Dispersed	Habitat importance map	0.0000
Baillon's Crake	<i>Porzana pusilla palustris</i>	10050	Vulnerable	Dispersed	Habitat importance map	0.0000

Hardhead	<i>Aythya australis</i>	10215	Vulnerable	Dispersed	Habitat importance map	0.0000
Australasian Shoveler	<i>Anas rhynchosotis</i>	10212	Vulnerable	Dispersed	Habitat importance map	0.0000
Arching Flax-lily	<i>Dianella sp. aff. longifolia (Benambra)</i>	505560	Vulnerable	Dispersed	Habitat importance map	0.0000
Powerful Owl	<i>Ninox strenua</i>	10248	Vulnerable	Dispersed	Habitat importance map	0.0000
Black Falcon	<i>Falco subniger</i>	10238	Vulnerable	Dispersed	Habitat importance map	0.0000
Southern Toadlet	<i>Pseudophryne semimarmorata</i>	13125	Vulnerable	Dispersed	Habitat importance map	0.0000
White-throated Needletail	<i>Hirundapus caudacutus</i>	10334	Vulnerable	Dispersed	Habitat importance map	0.0000
Square-tailed Kite	<i>Lophoictinia isura</i>	10230	Vulnerable	Dispersed	Habitat importance map	0.0000
Elegant Parrot	<i>Neophema elegans</i>	10307	Vulnerable	Dispersed	Habitat importance map	0.0000

Habitat group

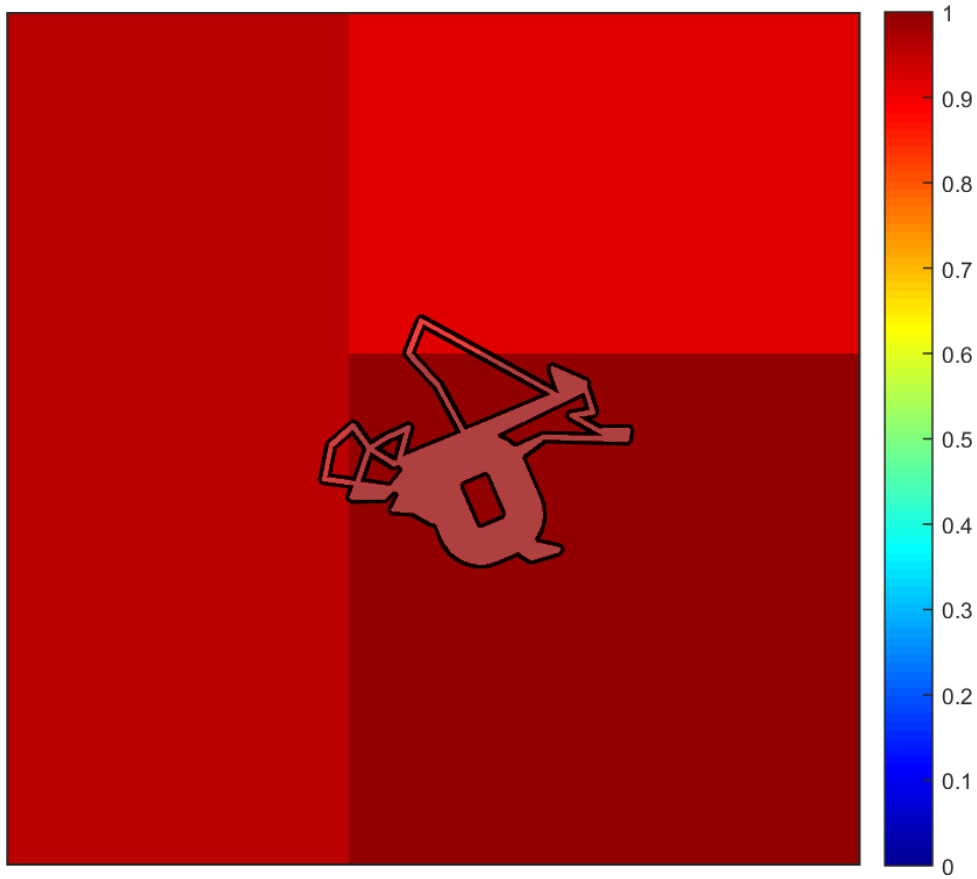
- Highly localised habitat means there is 2000 hectares or less mapped habitat for the species
- Dispersed habitat means there is more than 2000 hectares of mapped habitat for the species

Habitat impacted

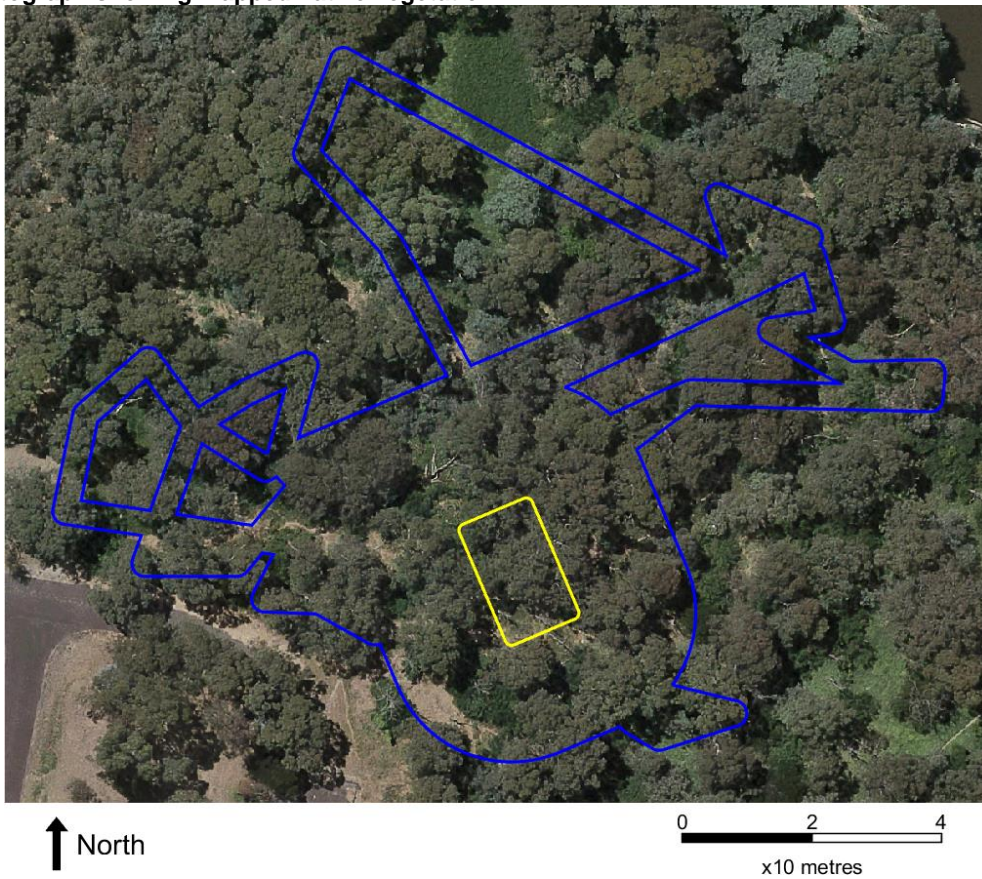
- Habitat importance maps are the maps defined in the Guidelines that include all the mapped habitat for a rare or threatened species
- Top ranking maps are the maps defined in the Guidelines that depict the important areas of a dispersed species habitat, developed from the highest habitat importance scores in dispersed species habitat maps and selected VBA records
- Selected VBA record is an area in Victoria that represents a large population, roosting or breeding site etc.

Appendix 3 – Images of mapped native vegetation

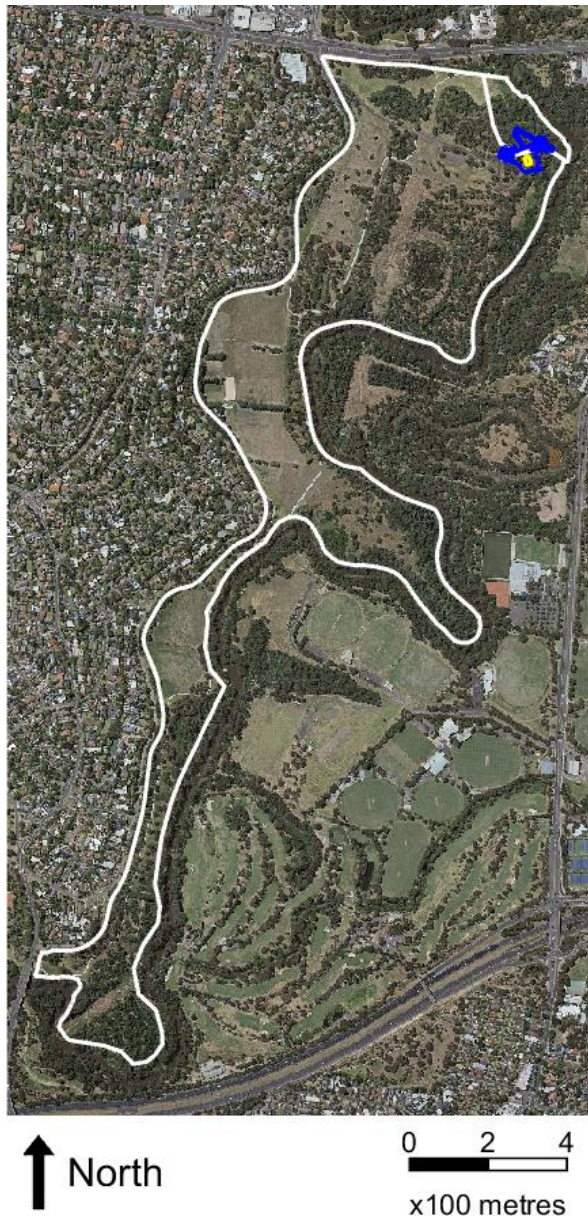
2. Strategic biodiversity values map



3. Aerial photograph showing mapped native vegetation



4. Map of the property in context

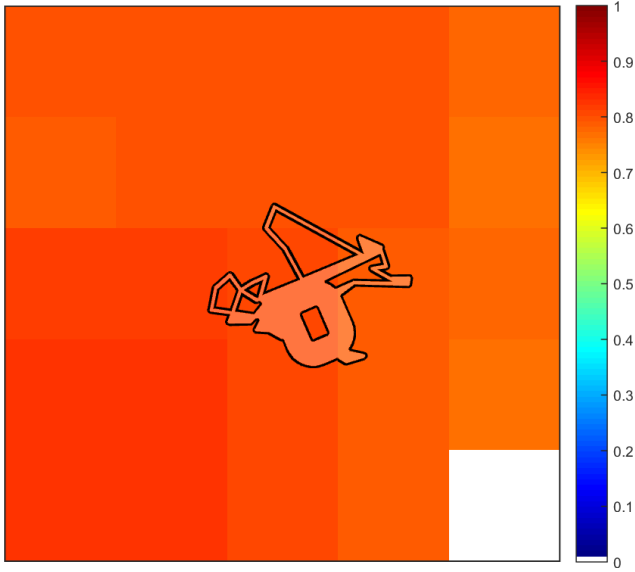


Yellow boundaries denote areas of proposed native vegetation removal.

Blue boundaries denote zones of partial removal with a halved condition score.

4. Habitat importance maps

Grey-headed Flying-fox
Pteropus poliocephalus
11280



Pink Mountain-correa
Correa lawrenceana var. *cordifolia*
505466

