

# Performance

Local government is the closest level of government to the community, responsible for delivering services, programs and facilities and enforcing a range of federal, state and local laws.

The Local Government Act 2020 legislates Councils in Victoria to ensure transparency in decision making, responsible financial management, strategic long-term planning and meaningful opportunities for communities to be engaged.

Banyule Council is governed by nine ward councillors elected by the community every four years. We are committed to delivering beyond the statutory requirements whilst balancing organisational sustainability.

Knowing how Council operates and effectively manages the resources available is important; it provides insight into how we deliver a broad range of programs, services and facilities to meet the needs and expectations of a growing and changing community.

Below is information about how Council is currently operating including how we allocate our budget. You may find this information useful to consider when participating in the Shaping Banyule 2041 engagement activities.

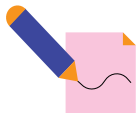
## Some of the services we currently deliver

### Banyule Council Services

#### Childhood services

13,836

Key Ages and Stages visits by maternal child health staff



Educated and cared for **204 children each day** at our kindergartens and day care centres



Administered **8,737 vaccines** at public immunisations sessions and **6,819 vaccines** at school sessions and achieved **94.5%** immunisation coverage

#### Youth Services



Supported young people via outreach contacts



Helped young people of all abilities to express their artistic side at Jets Arts Studio

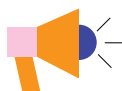


Youth officers delivered support sessions to young people to facilitate successful referral into appropriate services

#### Family support



Conducted **3,033 hours** of additional visits for mothers and infants identified with special needs or vulnerability, outreach and development screening and first-time mothers



Engaged with local families and promoted early childhood services through play-based activities

#### Librarians and facilities



**23,226 active** library users, borrowing more than **1.11 million** items

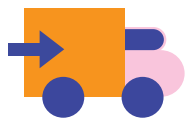


Welcomed **1,710,013** visits to Council leisure centres  
Maintained **44** sports grounds

Some of the services we currently deliver (continued)

Banyule Council Services

Home and community care and Commonwealth Home support program (CHSP)



Delivered **31,657 meals**

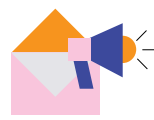


Served **1288 clients** through the CHS (30,094 hours of Domestic Assistance)



Provided **14,860 hours** of personal care, **2,264 hours** of respite, **1,596 hours** of property maintenance

Local business initiatives

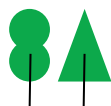


Delivered **44** promotional campaigns in collaboration with Traders Associations



Supported economic development by delivering training, networking, mentoring and business events, attended by over **700 participants**

Greening Banyule



Planted **3,226 trees** in streets and parks



Planted **10,854** tubestock shrubs, grasses, ground cover herbs and semi-aquatic plants



Educated **2,292 visitors** in waste minimisation practices at our Rethink Centre

Keeping Banyule beautiful



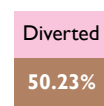
Maintained **300** parks and reserves



Care for **86,000** street trees and park trees



Emptied approximately **3.9 million bins**



**of waste from landfill**

Health and wellbeing

Working with whole of community and focuses on



Multicultural



Disability



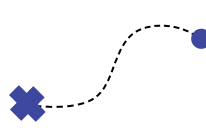
LGBTQ+



Aboriginal and Torres Strait Islander

Undertake preventative health initiatives around many issues including; gambling harm minimisation, sugary drinks, prevention of violence against women and gender equity

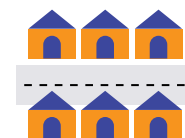
Provide and maintain public assets



Continued to upgrade Banyule's shared trail network which extends for **44 km**



Replaced more than **20,000 sqm** of footpath



Maintained Banyule's network of roads, including resurfacing **55 local streets**

Food Safety



Completed **1,333** statutory inspections/assessments of food premises



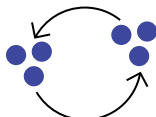
Registered **817** food premises



Submitted **151** samples for statutory food sampling requirements



Investigated **58** food related complaints



Conducted **42** recalls for food products

Public Health



Conducted **14** gastrointestinal outbreak investigations at aged care and childcare facilities



Conducted **57** tobacco education visits to schools and children's playgrounds, and conducted **90** tobacco test purchases



Investigated **631** health/nuisance related complaints in the 2019 calendar year

Interpreter service

If you need an interpreter call TIS National on **131 450** and ask to be connected to Banyule Council on **9490 4222**.

### How are we meeting community expectations?

Our community rates their satisfaction with our performance highly in comparison to the metropolitan and state-wide averages. Our service areas with the highest community satisfaction in 2020 include:



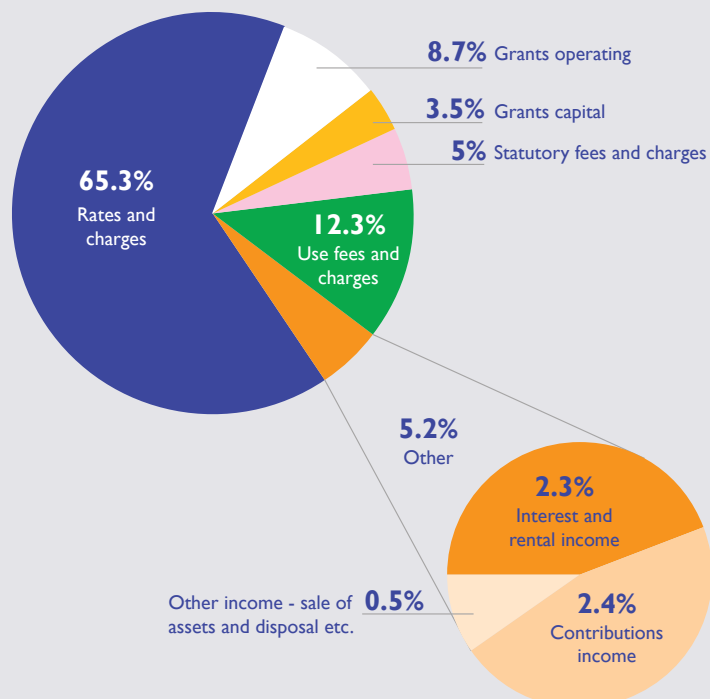
### How we spend on services

In 2020/2021 Banyule Council will continue to deliver services and fund capital works and initiatives including an allocation of **\$10.5 million** to a COVID-19 Economic Support Package.

#### Council Budget 2020/2021: allocation of each \$100 worth of expenditure

Capital Works and Initiatives	38.31
Waste Collection and Recycling	9.21
Parks, Reserves and Street Trees	6.04
Health, Aged and Disability Services	5.66
Family and Children Services	5.54
Recreation, Leisure and Aquatic Facilities	4.48
Library Services, Arts and Culture	3.01
Building Control and Planning	2.95
Roads, Footpaths, Drains and Related Utilities	2.76
Transport and Parking	2.46
Property Management	2.44
Urban Planning and Conservation	2.11
Depot, Plant and Fleet Maintenance	2.04
Debt Servicing	1.17
Local Laws and Animal Management	0.77
Social Enterprise	0.50
Administration and Governance	10.55

### How we generate revenue



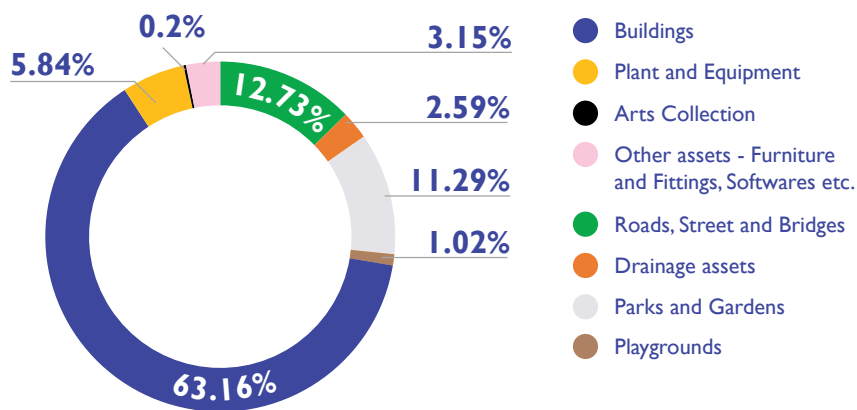
#### Interpreter service

If you need an interpreter call TIS National on **131 450** and ask to be connected to Banyule Council on **9490 4222**.

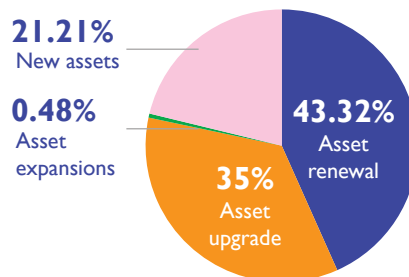
## How we spend on assets

We manage \$1.66 billion worth of community assets. Annually we invest significantly in building new and renewing existing assets (approximately \$64 million for 2020/21).

### Spend by asset class



### Spend based on new vs renewal vs upgrade



## Who works at Council?

Employment Type (Gender)	Executive	Assets and City Services	City Development	Community Programs	Corporate Services	Total
Full Time (Female)	2.00	20.00	26.00	80.00	46.00	174.00
Full Time (Male)	3.00	165.00	41.00	18.00	28.00	255.00
Full Time (Other)			1.00			1.00
Part Time (Female)		5.87	21.88	109.58	19.90	157.23
Part Time (Male)		1.28	7.50	18.57	1.34	28.69
Part Time (Other)				0.63		0.63
Casual (Female)		0.91	1.43	12.00	3.90	18.24
Casual (Male)			2.22	7.35	1.19	10.76
Casual (Other)				0.23		0.23
<b>Total</b>	<b>5.00</b>	<b>193.06</b>	<b>101.03</b>	<b>246.36</b>	<b>100.33</b>	<b>645.78</b>

### Things to think about:

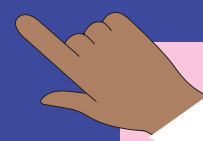
How do we ensure everyone has access to Council services, programs and community assets?

How will we continue to deliver great services and remain financially sustainable?

What might our future services, programs and infrastructure needs be?

### Join the conversation at

[shaping.banyule.vic.gov.au/Banyule2041](https://shaping.banyule.vic.gov.au/Banyule2041)



### Interpreter service

If you need an interpreter call TIS National on 131 450 and ask to be connected to Banyule Council on 9490 4222.