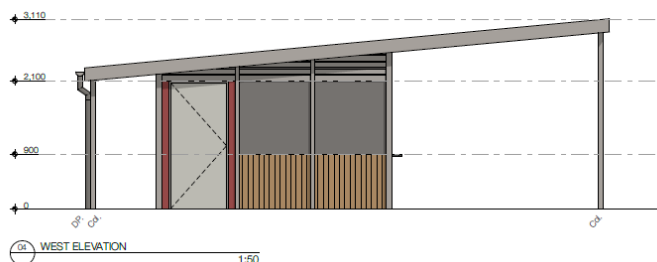
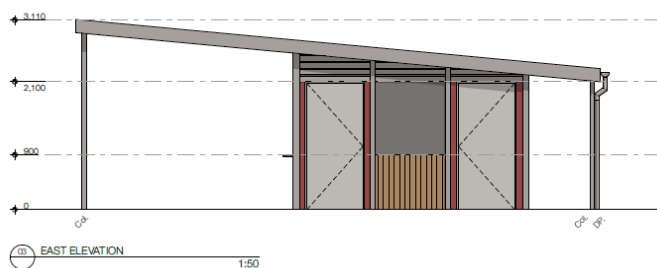
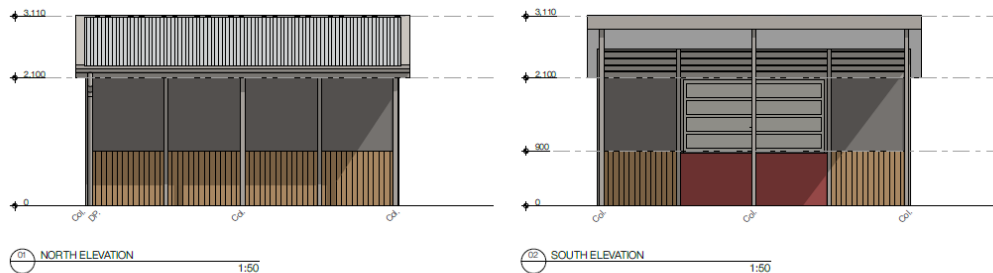
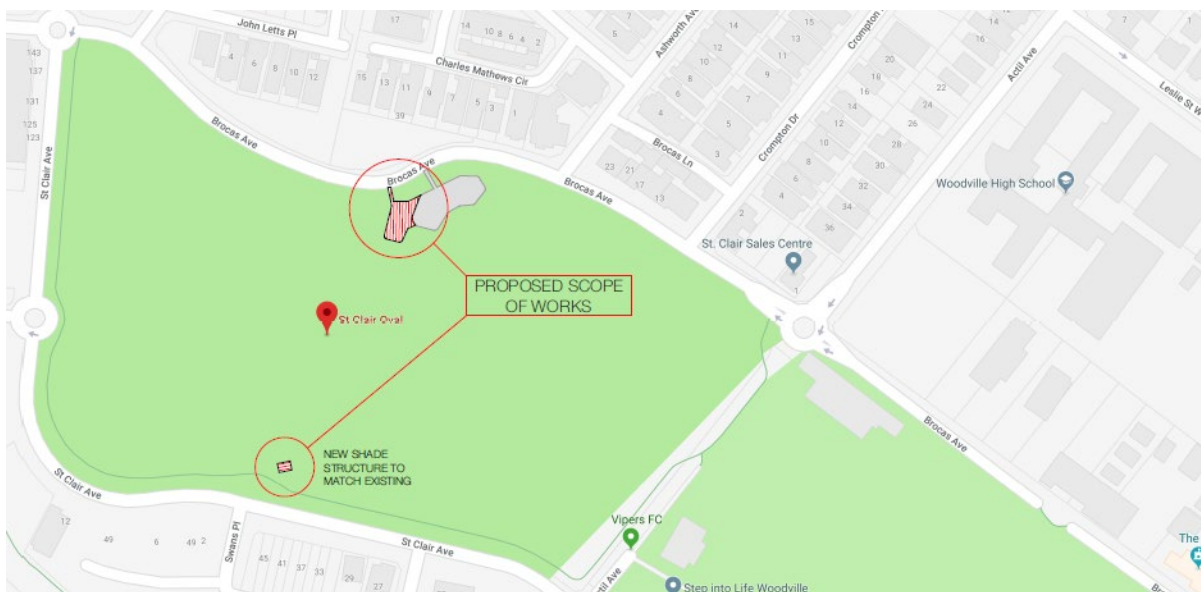


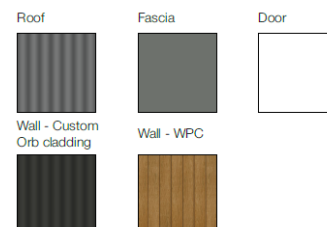
# Revised Servery Building and Shade Structures Design

## How will the servery building be used?

- The intention of the servery is for it to be made available for permit holders to serve refreshments (non-alcoholic), BBQ goods and other light snacks (pies, fruit, potato crisps etc).
- The servery does not include a kitchen, deep fryer, oven or stove top.
- The servery will include a provision for a fridge, wash basin, pie warmer and benchtops.
- The servery will be used for the sale of goods in conjunction with weekend sporting events during both summer and winter.
- There will be minimal deliveries (once a week by a club member) to restock fridges and light refreshments.
- The servery will be available for community use associated with approved community events (outside of permit holder hours).
- Two shelters will be available for community use

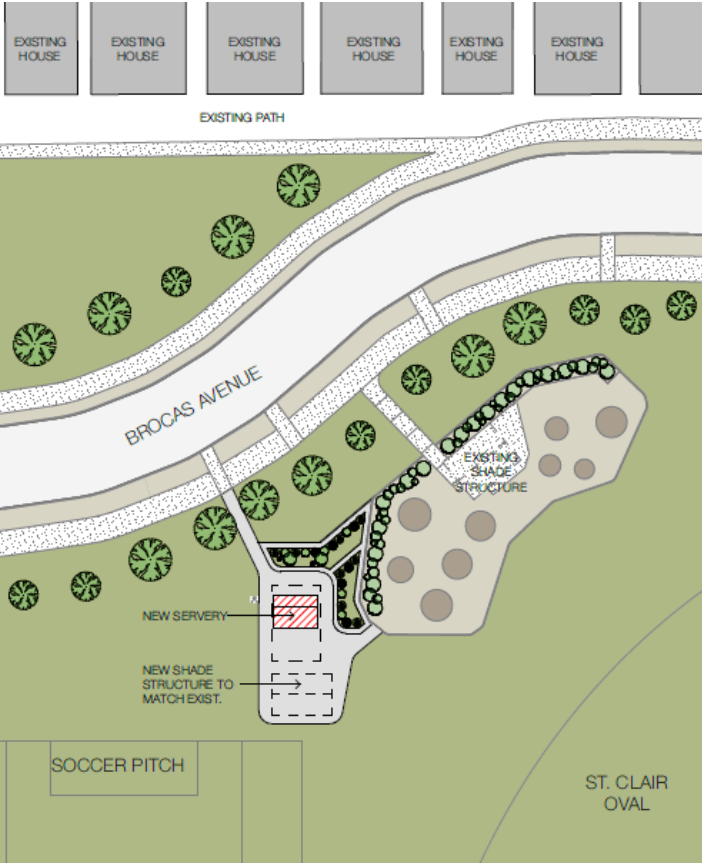


### COLOUR SWATCH

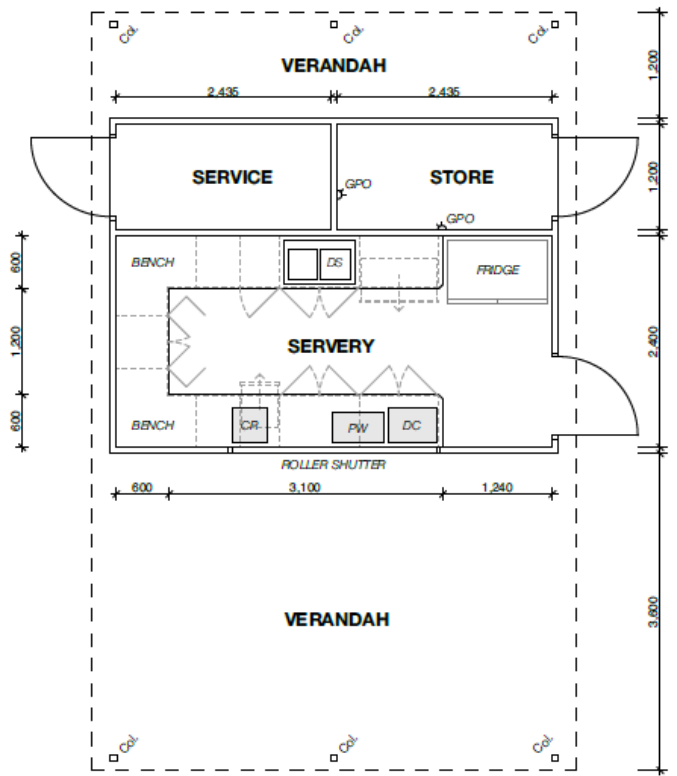


### MATERIAL FINISHES

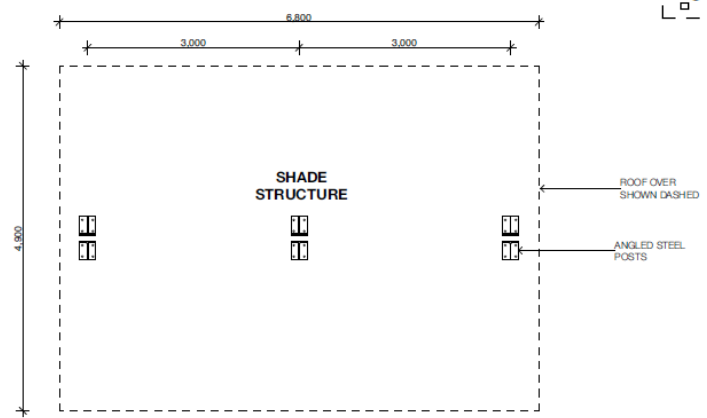
Building Elements	Materials
Roof	Skillion, Custom Orb Corrugated roof sheeting - Colorbond Range
Fascia	Colorbond powder coated aluminium
Door	Painted - White
Wall Finish	Wood Plastic Composite (WPC) timber cladding Colorbond Range - Custom Orb cladding
Fixings	Stainless Steel



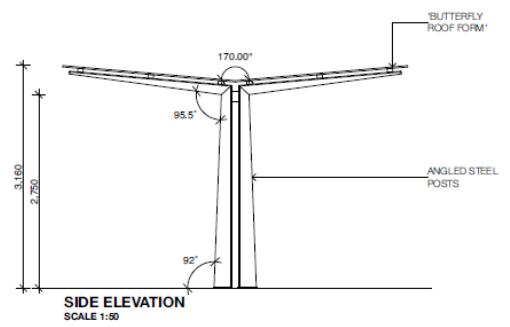
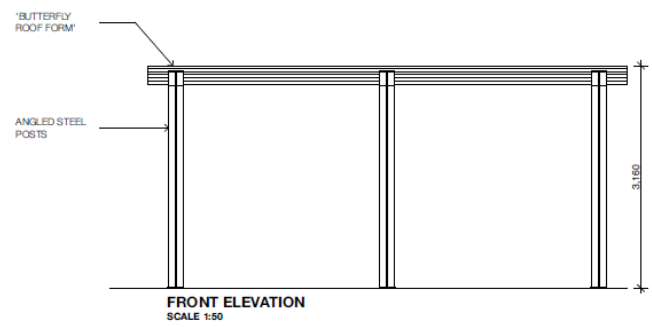
GENERAL LEGEND	
CR	CASH REGISTER
DS	DOUBLE SINK
DC	DISPLAY CABINET (BENCH TOP)
FR	FRIDGE (DOUBLE)
GPO	GENERAL POWER OUTLET
PW	PIE WARMER



PROPOSED SITE PLAN  
1:500



FLOOR PLAN  
SCALE 1:50  
DRAWINGS AND DIMENSIONS OF THE PROPOSED SHADE STRUCTURES ARE TO BE REFERRED TO AS INDICATIVELY ONLY



PROPOSED SHADE STRUCTURES  
1:50