

ALBERMARLE & HARDIMAN STREETS

LANDSCAPE PLAN

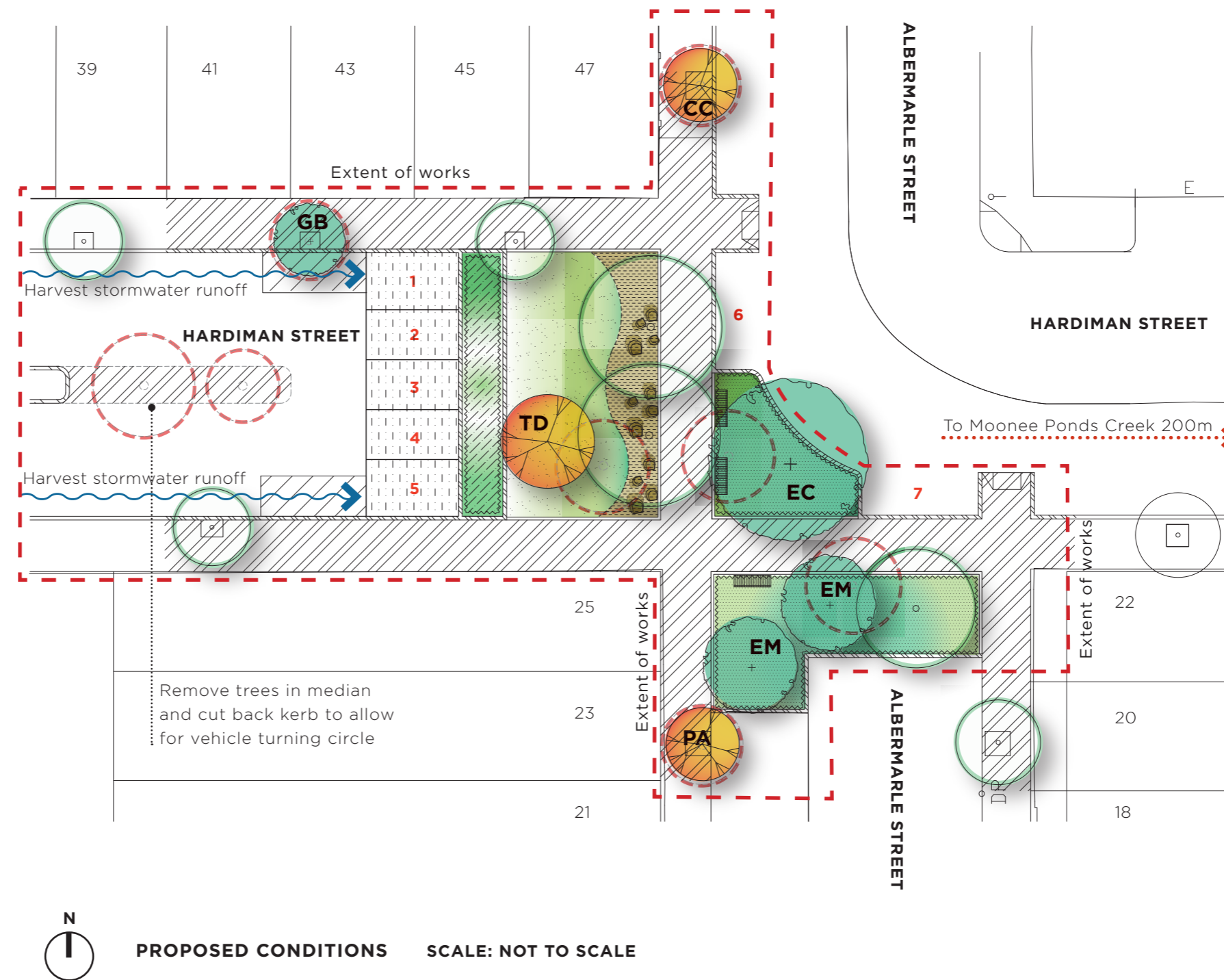
The landscape design proposes to:

- Improve local area cooling by reducing unnecessary road surfaces.
- Capture and reuse stormwater where possible.
- Increase tree canopy cover for shade amenity
- Manage the removal of trees in poor health and provide a net increase of trees.
- Improve the biodiversity and sustainability for the landscape through diverse plant species selection.

Existing trees to be removed	8
Existing trees to be retained	8
Proposed trees to be planted	7
Existing tree canopy* cover	31%
Proposed tree canopy* cover at maturity	44%
Existing car spaces	9
Reduction in car spaces	2
Number of trees at completion of works	15
Number of car spaces at completion of works	7**

*Canopy cover has been calculated as a percentage of cover for the area of land within extent of works - not including any privately owned land. The percentage is measured as an estimated value for predicted tree size at full maturity.

**This number may increase or decrease slightly depending on traffic engineering requirements.



LEGEND

- Proposed evergreen tree
 - EC - *Eucalyptus camaldulensis* River Red Gum
 - EM - *Eucalyptus mannifera* Brittle Gum
 - GB - *Grevillea baileyana* White Oak
- Proposed deciduous tree
 - CC - *Corylus colurna* Turkish Hazel
 - PA - *Phellodendron amurense* Amur Cork Tree
 - TD - *Taxodium distichum* Bald Cypress
- Existing tree to be retained & protected
- Existing tree to be removed
- Renewed asphalt footpath
- Permeable Asphalt
- Raised concrete kerb
- Flush concrete edge
- Timber Edge
- Native grass planting
- Rain garden
- Mulched area underneath existing trees
- Lawn area / open space
- Flat top feature rock boulders
- Seating with back rest
- 7 Proposed car parking spaces