

BELLAIR STREET RESERVE PLAYGROUND

PROJECT OVERVIEW

The Bellair Street Reserve playground is due for renewal.

This year, the City of Melbourne will upgrade the playground in Bellair Street, also known as “Skinny Park”, as it is due for renewal.

While the size of the park is small and narrow, we are keen to provide a similar range of play experiences to what is currently provided, and add to these where possible.

The new play space will:

- Be a local level play space
- Primarily provide play experiences for 0 – 8 year olds
- Provide ‘graduated’ challenges through two separate play combination units
- Incorporate a mix of physical play with further social and imaginative play
- Enhance the landscape setting to provide more nature based play experiences.
- Include design elements which complement the railway theme and heritage of Kensington

The renewal is due for completion in 2014



Existing Site Aerial

PLAY OPPORTUNITIES

1. Double Swing

Double swing to include standard and bucket seat allowing younger and older children to swing together.



2. Sand Play Area

Two sand pits connected by a crawl tunnel are a great opportunity for social, emotional and language development. Children develop communication skills, share and play with one another. Toddlers especially love sand play and will spend hours digging, building, scooping, carrying, molding, and scraping.



3. Train Platform & Play Unit

With an outlook to the adjacent rail corridor, children are able to engage with their broader surroundings including passing trains and act out various experiences individually or in groups. The play structure promotes sensory awareness, physical and active play, decision making, social participation and rule making.



Components may include : timber platform, slide, steps, shop front, wheel, bench, windows.

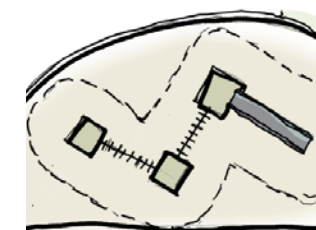
4. Basket Swing

The basket swing design allows easy access for children for swinging or simply relaxing with friends. A “social” swing, the Nest swing offers a more inclusive alternative to a standard swingset.



5. Combination Play

An elevated, linking playground unit combines a sense of achievement with opportunities for individual and group play. The connected elements provide options for circulation and encourage games. It will offer traditional play functions including climbing, hanging, balancing, and sliding.

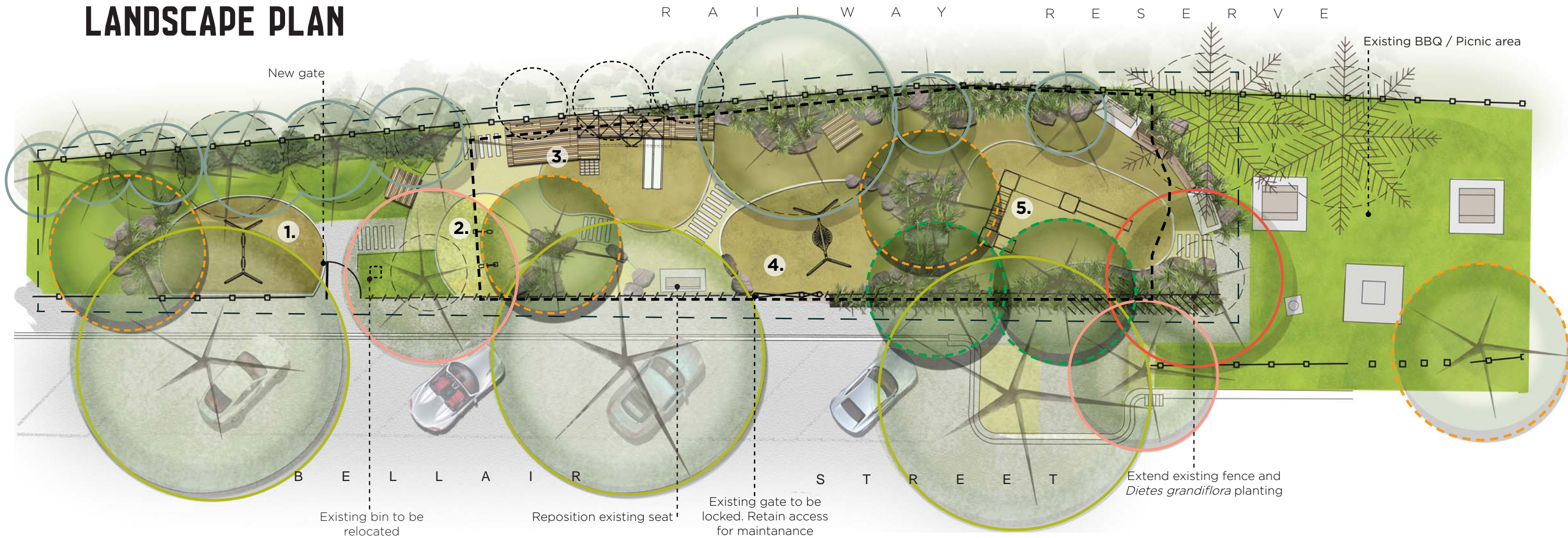


Components may include : multiple linking decks, bridges, climbing elements, slide, fireman’s pole and swing bar.



BELLAIR STREET RESERVE PLAYGROUND

LANDSCAPE PLAN



LEGEND

| | | | | | |
|-------------------------------|--|--|--|---|-----------------------------|
| 1. DOUBLE SWING | EXISTING TREE <i>Phoenix canariensis</i> Canary Island date palm | EXISTING TREE <i>Quercus coccinea</i> Scarlet Oak | PROPOSED TREE <i>Agonis flexuosa</i> Willow Myrtle | Flat topped mudstone informal rock seating and tussock plants | PROPOSED SURFACES Sand |
| 2. SAND PLAY | EXISTING TREE <i>Platanus x acerifolia</i> London Plane | EXISTING TREE <i>Schinus molle</i> Peruvian peppertree | PROPOSED TREE <i>Schinus molle</i> Peruvian peppertree | Proposed standard park seats | Granitic gravel |
| 3. TRAIN PLATFORM & PLAY UNIT | EXISTING TREE <i>Quercus rubra</i> Red Oak | EXISTING TREE TO BE REMOVED | 600 Dia concrete crawl tunnel amongst rocks | Proposed timber seating platform | Softfall mulch |
| 4. BASKET SWING | | | Proposed concrete sleepers | Timber mulch path | Extents of works line |
| 5. COMBINATION PLAY | | | | | Existing line of playground |

SCALE 1:200 @A3

