

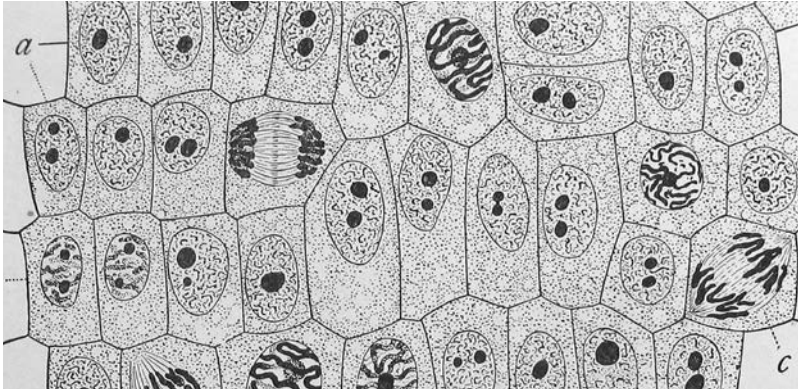
# CELLS



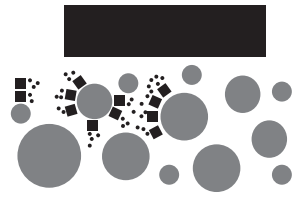
An operating room at Victoria Hospital in 1927. Innovations in healthcare including the Cobalt Bomb and kidney dialysis were developed here. Image from Celebrating South Street Hospital.



- Compartmentalized “cells” reference the history of medical innovations and support different functions.
- A stage accommodates temporary programming.
- A reflecting pool inspires contemplation and frames the historic face of the WMCH.
- Bosque areas allow for informal gathering in the shade.
- Smaller cells throughout the square provide the opportunity for planting.



Human cells. Image from Wikipedia [https://en.wikipedia.org/wiki/Cell\\_\(biology\)](https://en.wikipedia.org/wiki/Cell_(biology)).



Market: 3m x 3m stalls



Yoga: 25 people



Concert: ~250 people



View looking north from South St.



View looking west from South St. and Colborne St.

