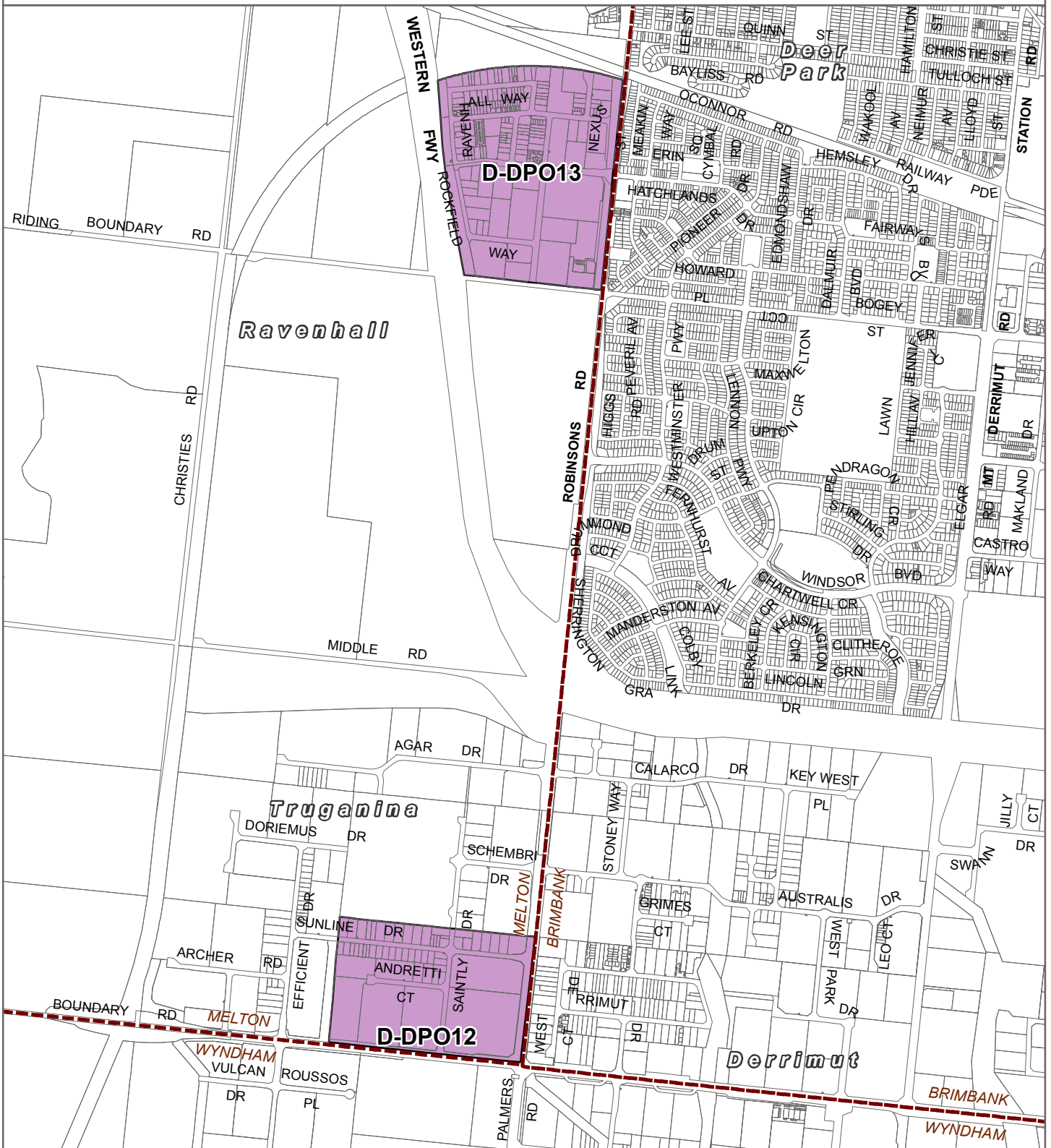
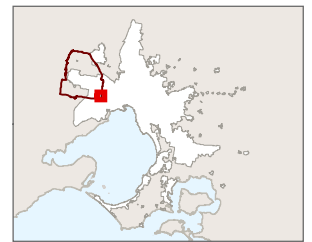


MELTON PLANNING SCHEME - LOCAL PROVISION AMENDMENT C170



LEGEND

- D-DPO - Area to be deleted from a Development Plan Overlay
- Local Government Area

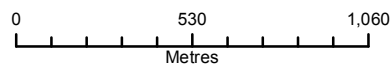


Part of Planning Scheme Map 14DPO

Disclaimer

This publication may be of assistance to you but the State of Victoria and its employees do not guarantee that the publication is without flaw of any kind or is wholly appropriate for your particular purposes and therefore disclaims all liability for any error, loss or other consequence which may arise from you relying on any information in this publication.

Planning Group
Print Date: 18/03/2019



Environment,
Land, Water
and Planning