



Blind Creek

Boronia, Victoria

Design Development Report

PREPARED FOR



CONTENTS

CHANNEL NATURALISATION	04
SKETCH PLAN	14
COMMUNITY WORKSHOP	16
DESIGN ANALYSIS	20
DESIGN RESPONSE	24
SECOND COMMUNITY WORKSHOP	32
KNOX CITY COUNCIL WORKSHOP	34
CONCEPT DESIGN	40

Project: Blind Creek
Authors: Jon Shinkfield
Josh Nielsen
Begüm Yilmaz

Client: Melbourne Water
Date: October 2018
Revision: C

Document Issue:	Revision:	Date:
Issue for:	A	22/08/2018
Design Development Report	B	31/08/2018
Design Development Report	C	01/10/2018

Prepared by:

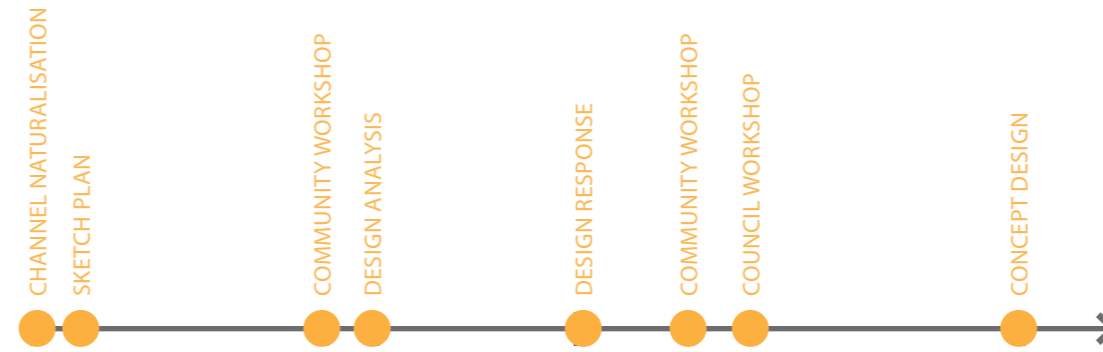




EXECUTIVE SUMMARY

Nestled amongst the parks and gardens at the foothills of the Dandenong Ranges in Boronia, Blind Creek has been piped and channelized since the 1960s. The second site in Melbourne Water's Reimagining Your Creek project, daylighting a 600m section of Blind Creek. Driven by a collaborative dialogue between Melbourne Water, the design team, Knox City Council and the local community, this project aims to enhance the existing amenity of the site through increased interaction with the waterway, enhanced connectivity, and flexible open spaces.

This report documents the evolution of the design as it has been shaped by stakeholder consultations from the original scoping project initiated by Melbourne Water (*Channel Naturalisation Project*), through to the current Blind Creek Concept Design.



BLIND CREEK TIMELINE



CHANNEL NATURALISATION

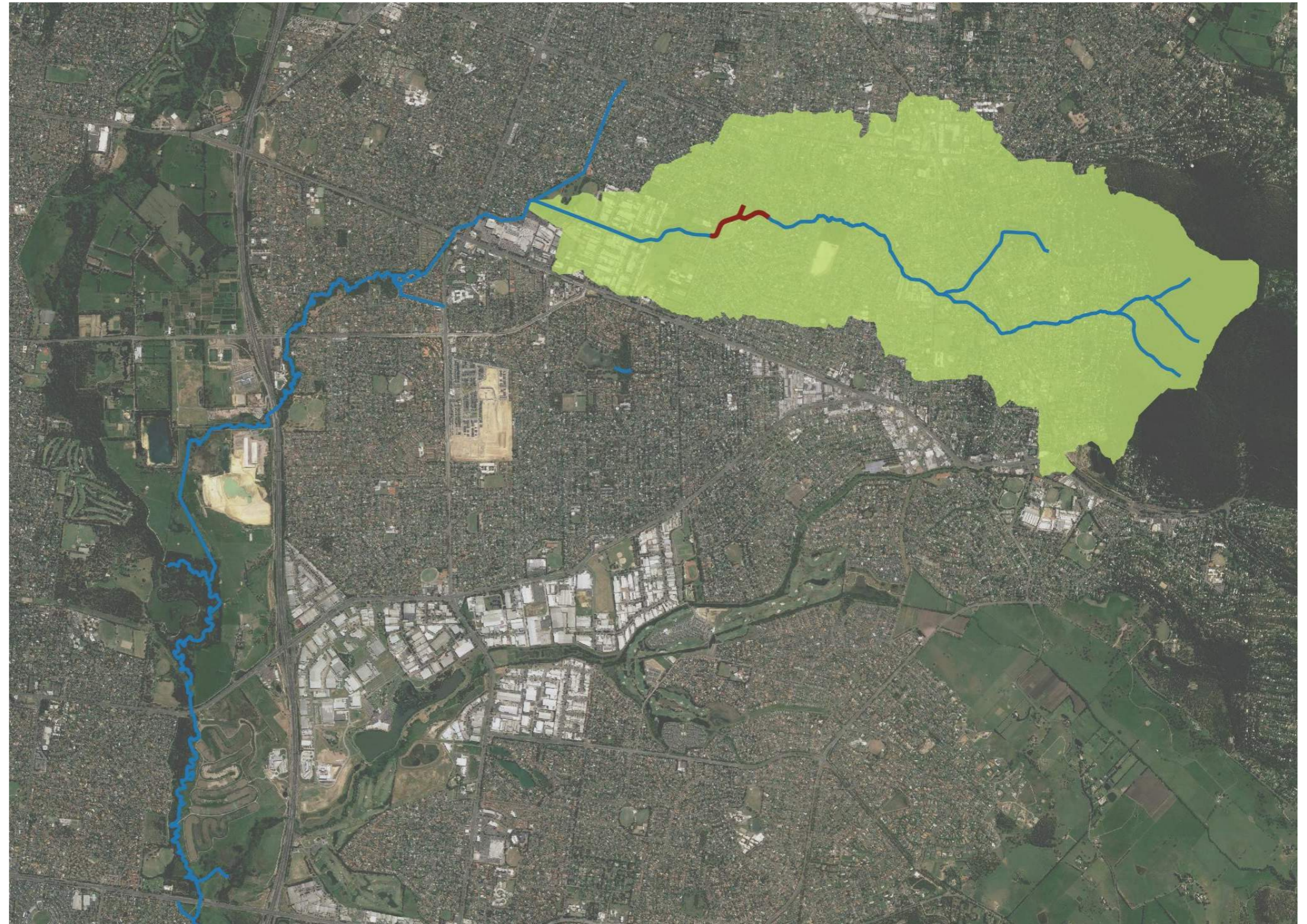
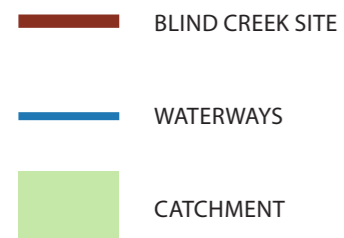
CATCHMENT CONTEXT

- Blind Creek is a tributary of Dandenong Creek in Melbourne, which flows from its headwaters in the Dandenong Ranges National Park through Ferntree Gully and Wantirna South, flowing under High Street Road, before entering Dandenong Creek at Scoresby.

- Melbourne Water's management focus for Blind Creek as a whole is:

'In 2030, extensive wetlands will have been restored and constructed, the removal of fish barriers where possible will see improved passage for migratory fish and amenity values will be maintained and improved through streamside vegetation to compliment paths for walkers and cyclists.'

- The site is part of the Blind Creek habitat corridor, and the Blind Creek Billabong, just upstream of the site contains four regionally endangered vegetation types (Wetland, Swampy Riparian Woodland, Swampy Woodland and Valley Healthy Forest), the vulnerably listed Grey Goshawk has also been observed in the area.

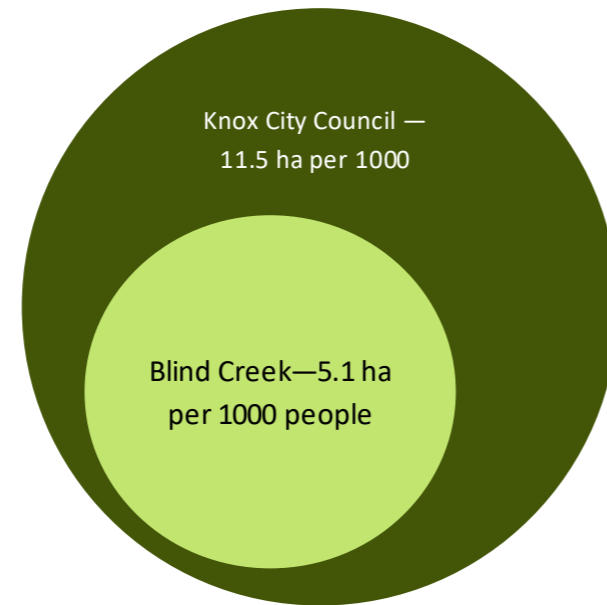


CATCHMENT CONTEXT DIAGRAM



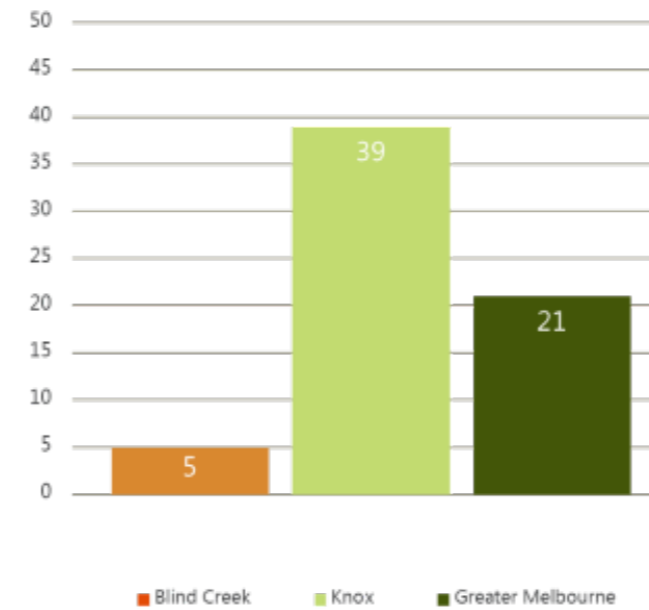
SOCIAL CONTEXT

- Knox City Council is a community connected by open space.
- Compared to the overall Knox City Council area, the Blind Creek catchment is relatively poorly served in terms of open space.
- Located in the East of the Melbourne Water region, the total population of the Knox City Council is 157,052 and is expected to reach 184,82¹ by 2036.
- In socio-economic terms, Knox City Council area has a higher index than Greater Melbourne.
- The community is already well connected to open space with 97% having easy access to open space within 500 m of their home¹. Almost 50% of households are those with children.

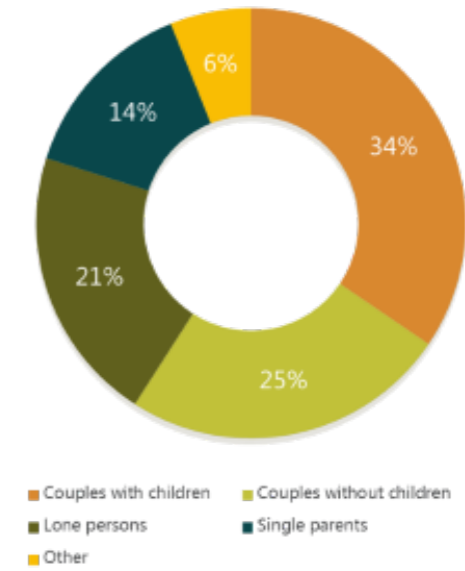


OPEN SPACE

SOCIO-ECONOMIC DATA PROVIDED BY MELBOURNE WATER



INDEX OF DISADVANTAGE



DEMOGRAPHICS

¹ KNOX COMMUNITY AND COUNCIL PLAN – 2017-2021, KNOX CITY COUNCIL

LINKS TO OTHER STRATEGIES

Knox Open Space Plan (2012-2022)

The Blind Creek project will contribute to the vision for open space set out in Council's Open Space Plan. The vision is that open space in Knox:

- is sustainable, attractive and green open space
- provides a diversity of leisure activities, and enables people to enjoy nature, engage with others, learn and play
- is well connected and accessible and contributes to the natural systems of the city.

The plan aims to achieve this Vision by proposing four strategic directions, of which the Blind Creek project will directly link to two (highlighted below):

- 1. Create healthy creek corridors that people love**
2. Activate community hubs
3. Empower the community to be stewards of open space
- 4. Engender a network of sustainable spaces**





LINKS TO OTHER STRATEGIES

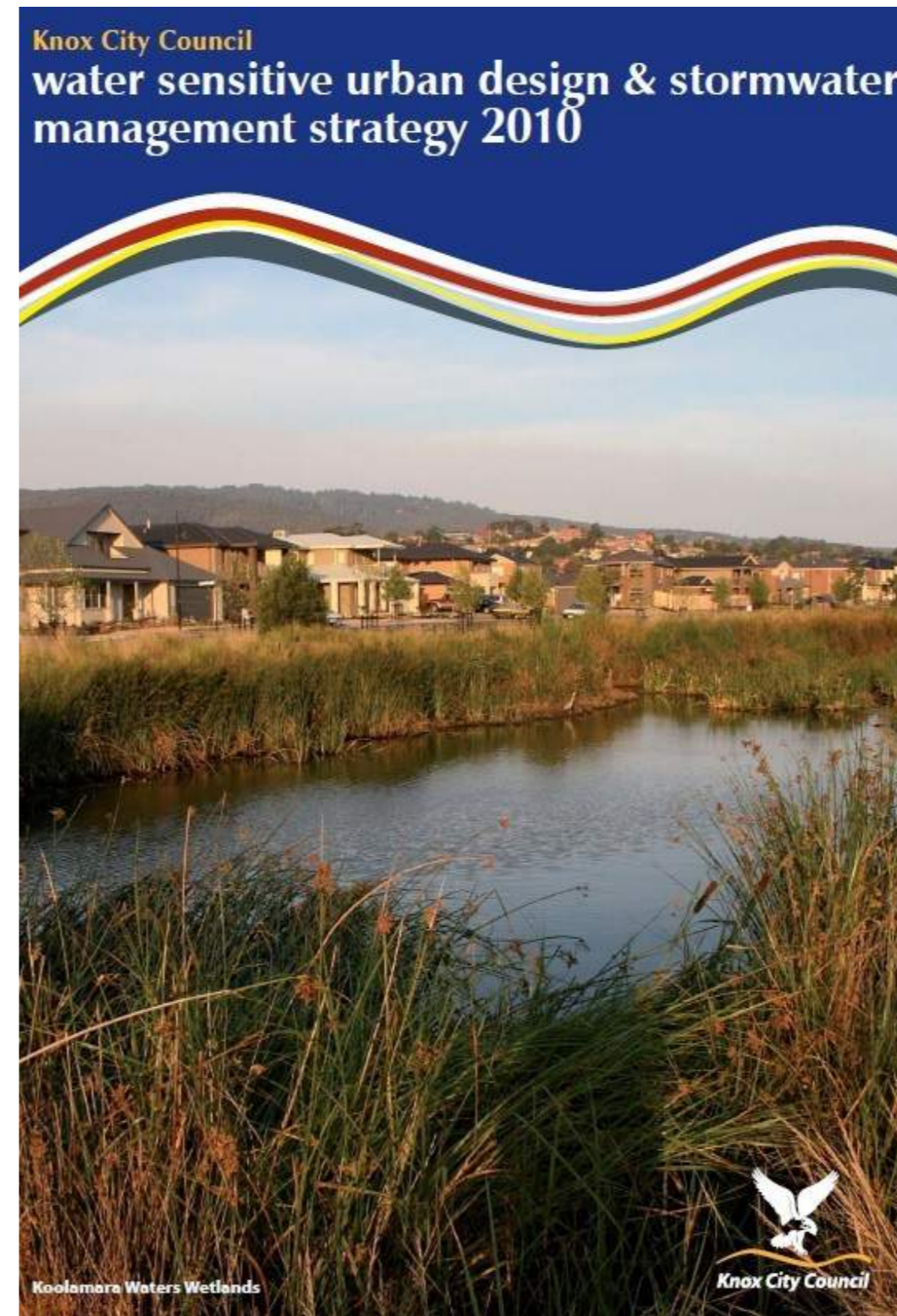
The Water Sensitive Urban Design (WSUD) and Stormwater Management strategy aims to protect and improve the health of Knox's streams and creeks for current and future generations, whilst improving the amenity value and sustainability of today's urban stormwater infrastructure.

The WSUD Strategy focuses on six priority areas:

- High-value waterways program (Dobsons Creek, Blind Creek, Ferny Creek, Monbulk Creek)
- Hotspots program
- Opportunistic program
- Planning program
- Maintenance program
- Evaluation and reporting

The Blind Creek project will link with and contribute to Council's high value waterways program.

In 2015, Council adopted a WSUD Policy. The inclusion of WSUD principles through a Council Policy enables Council to deliver on the aims established within the Water Sensitive Urban Design (WSUD) & Stormwater Management Strategy 2010, by incorporating the principles of WSUD into Council projects and planning applications. The Policy links to a procedure which aids Council investment in the construction of WSUD systems, where environmental gains can be made for the optimal cost.



THE SITE

- **Site overview:** grassed floodway with low flow pipe
- **Channel type:** shallow trapezoidal floodway
- **Channel length:** 620 m
- **Channel width:** 12 m
- **Channel depth:** 1.5 m
- **Channel condition:** stable channel, scattered overstorey trees, mown grass understorey



VIEW WEST ALONG BLIND CREEK



SITE CONTEXT

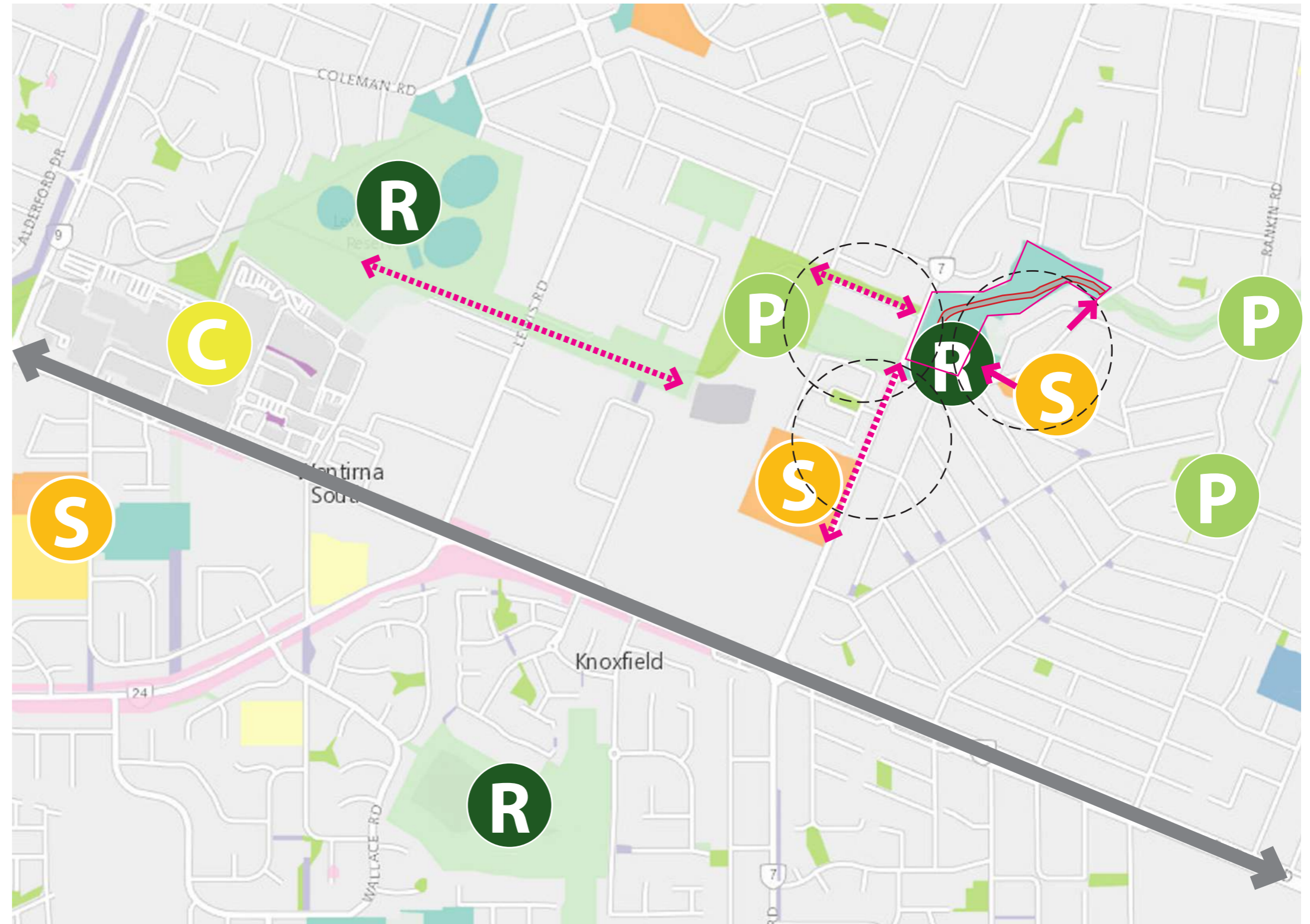
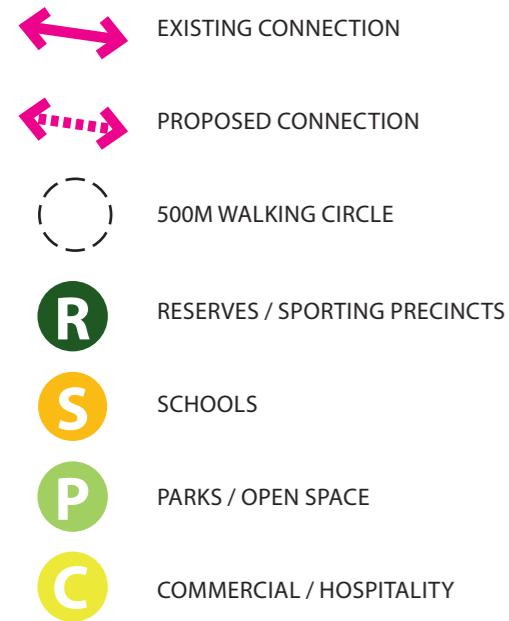
- The Blind Creek site is located adjacent to Fairpark Reserve, bounded by Manuka Drive at its upstream end and Scoresby Road at the downstream end of the site.
- The waterway is a grassed, artificial, trapezoidal channel, designed to carry larger events with low flows being conveyed through three pipes that captures low flows towards the upstream end of the site and diverts them under the Fairpark Reserve oval.
- There is a moderate density of large native trees planted along the banks, and a shared footpath running alongside one bank, with a crossing at one point along the channel. The grassed channel is neatly mown and the site overall looks well maintained.
- The creek runs in between Fairpark Reserve and another reserve to the south and north side respectively. Further upstream, the creek passes under Rankin Road into Blind Creek Billabong.
- The waterway is a widely-used recreational, bicycle and walking corridor.



SITE PHOTOS

CONNECTIVITY & OPEN SPACE

- The Blind Creek site sits between reserves, parks, schools and runs adjacent to a formal and informal sporting oval.
- Amenities are within a 5min/400m walk of the site.
- The site forms part of a green linear connection for pedestrians towards the commercial shopping area.
- The site functions as a movement corridor for dog walking and recreation.



CONNECTIVITY DIAGRAM

CHANNEL NATURALISATION





CONSTRAINTS

- The 100 year flood extents for the Blind Creek site indicate that large floods are contained within the existing channel. It is likely the creek was designed to convey such high flows.
- Two sewer lines cross the waterway corridor. Further information on the type - and most importantly - the depth will be needed as this site progresses through the design development phase.
- Neither flooding or water services appear to provide insurmountable constraints to further design development, subject to more investigation.
- There is a network of underground stormwater pipes at the site, which provide both opportunities for daylighting and potential constraints. Further investigation is needed to understand the details of the location, depth, connections and materials of these pipes.

OVERFLOW CHANNEL

SEWERS

EXISTING PIPE

100YR FLOOD EXTENT (WATERWAY)



CONNECTIVITY DIAGRAM

PRECEDENTS



OPPORTUNITIES TO ENGAGE WITH THE WATERWAY



PRECEDENTS



ROBUST STRUCTURES AND FURNITURE

SKETCH PLAN

DESIGN INTENT

The drivers for the concept were derived through an urban design lens where enhancing liveability was the primary driver. By understanding the site we were able to promote and improve on a variety of elements to benefit the community, including:

- Bringing water to the surface (**daylighting the creek**) and creating **areas of wet habitat** promoting local flora and fauna as well as managing water and creating places for the community.
- An **urban forest** will meander at the creek's edge providing shade for the community, opportunities for bird movement as an arboreal corridor and mitigate urban heat island effect.
- A series of **bridges and interventions** will improve pedestrian/cycle connection and create place.
- Creating an offline **wetland** used to store and cleanse water before being **stored for irrigation** of the sports oval.



CONCEPT PLAN



SECTION A-A





3D MODEL VIEW



PRECEDENT IMAGERY THAT INFORMED THE DESIGN



VISUALISATION OF THE CREEK

CURRENT OPPORTUNITIES AND CHALLENGES ON THE SITE

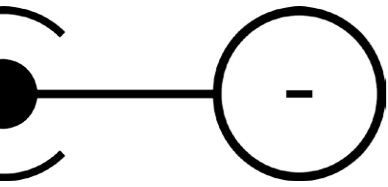
A workshop was organised with the community advisory group to get a first hand account of Blind Creek. The discussions were split into three sections that focused on:

- The current values, issues and opportunities
- The future and what would be a successful outcome
- Ideas to realise our aspirations.

At the end of these discussions, the group reviewed the collective results and consolidated everyone's ideas into overarching categories.

The outcomes provided the basis for the engineers and landscape team to move forward to a concept design.





COMMUNITY VISION FOR BLIND CREEK

Following on from the identification of the current opportunities and issues on site, the community then explored their vision for a good outcome and ideas for realising this.

The four categories represent the synthesised visions of a good outcome, with the ideas for realising these shown below.



SENSE OF PLACE

A water wheel, sculpture or feature that captures the eye

Prevent litter in waterway, floating downstream

to chill out with seating for reading, away from roads

to de-stress, with bubbling water, for improved health/spiritual

to explore the creek/natural area and learn about the environment, especially kids

and is a place that draws people to stay, with improved access

Seating and tables that cater for a range of age groups and accessibility requirements

Sustainable re-use and re-purposing of materials

Limited use of concrete

Focus on view east - towards Dandenong Ranges

Things to explore and do, especially so kids get back to nature, including rock pools and areas of interest, places to interact with water and get wet!

A place that caters for people:

to escape to on hot days

to picnic on a lawn area, under shade, in a green space



NATURAL ENVIRONMENT

- Creek to meander naturally and have water pools, with a variety of vegetation
- Structures to create a sense of adventure/stepping stones
- Billabong style environment
- Environmental education
- Habitats for birds/bats
- Improved biodiversity
- Place for environmental learning and play
- Habitat variability dry/wet/mature trees and saplings, rare, threatened and indigenous species
- Reduce noise pollution from roads
- Story behind re-emerging waterway
- Constructed wetlands, flowing and still water
- Edible plantings and bush foods with explanatory signs
- Plantings to attract wildlife/birds
- Sandy/beach areas along water's edge
- Walk areas – permeable and porous surfaces, education trail, solar lighting, fairy lights in trees
- Sound of flowing water and people interacting with the waterway
- Create aquatic habitats
- A calm, peaceful, relaxing area with a variety of vistas but alive with natural sounds of water running, birds and insects interspersed with the sounds of kids playing sport, riding bikes and enjoying outdoors
- A place to escape to – away from the city grind
- Crossovers/bridges
- Somewhere to sit – picnic tables/benches, natural seating on rocks, tree trunks

COMMUNITY INTERACTION

- Improved north-south connections to open space, eg. school connection to northern open space/SCG
- Simple and easily understood design (not too rigid)
- Places/opportunities for kids to have nature play space
- Educational signage in conjunction with the design
- Diversity of edge profiles
- Place for parents to sit and watch kids playing – and appreciate surrounds
- Helping the community understand how they can maintain the site (link to existing groups or establish new 'Friends of' group)
- Inclusion of pools within the waterway, rocks and ripples

ACCESS AND CONNECTIVITY

- Access to SCG for cricket club trailer
- Improved disabled access to underpass
- Seating on northern bank and path to connect
- Grave/informal path on northern side near SCG
- Shelter with seating near crossings at 3 or 4 sites and lighting
- Useable – sports clubs, families, residents, whole community
- Walking paths that connect all areas – shops at Manuka Road

DESIGN ANALYSIS

CONNECTIVITY

A strategic design was developed that began to incorporate the initial feedback from the community. The overarching structure was based on enhancing connectivity of both the community and the local ecology. Underlying this was the provision of a variety of ecologically diverse habitats, some of which also provided spaces for people to engage and interact with.



HIGH-LEVEL STRATEGY

DESIGN ANALYSIS



WESTERN PORTION

The western portion of the site is bound by the busy Scoresby Road with quite an open existing channel.

We proposed to increase the planting adjacent to Scoresby Road to create a visual and aural barrier with the road, whilst still allowing glimpses into the site for passing motorists. We also incorporated an informal crossing to connect the major southern path with the Scoresby Road footpath. In doing so, this also offers pedestrians an opportunity to cross and interact with the creek.



SITE ANALYSIS AND DESIGN

MIDDLE PORTION

The middle portion of Blind Creek acts as a central node and has the opportunity to provide a larger open space adjacent to a large natural pool where users can interact with the creek both casually or as more structured school groups.



SITE ANALYSIS AND DESIGN

DESIGN ANALYSIS





EASTERN PORTION

Towards the eastern portion of the creek, the existing canopy cover becomes denser and there is a feeling of being removed from urban life. The proposal seeks to enhance these characteristics by increasing the amount of native planting, whilst allowing opportunities for people to sit, reflect, and experience the peacefulness of the area.

The design also engages with an improved informal path network that allows people to casually walk through this 'wilder' area.



SITE ANALYSIS AND DESIGN

DESIGN RESPONSE

PRELIMINARY CONCEPT PLAN

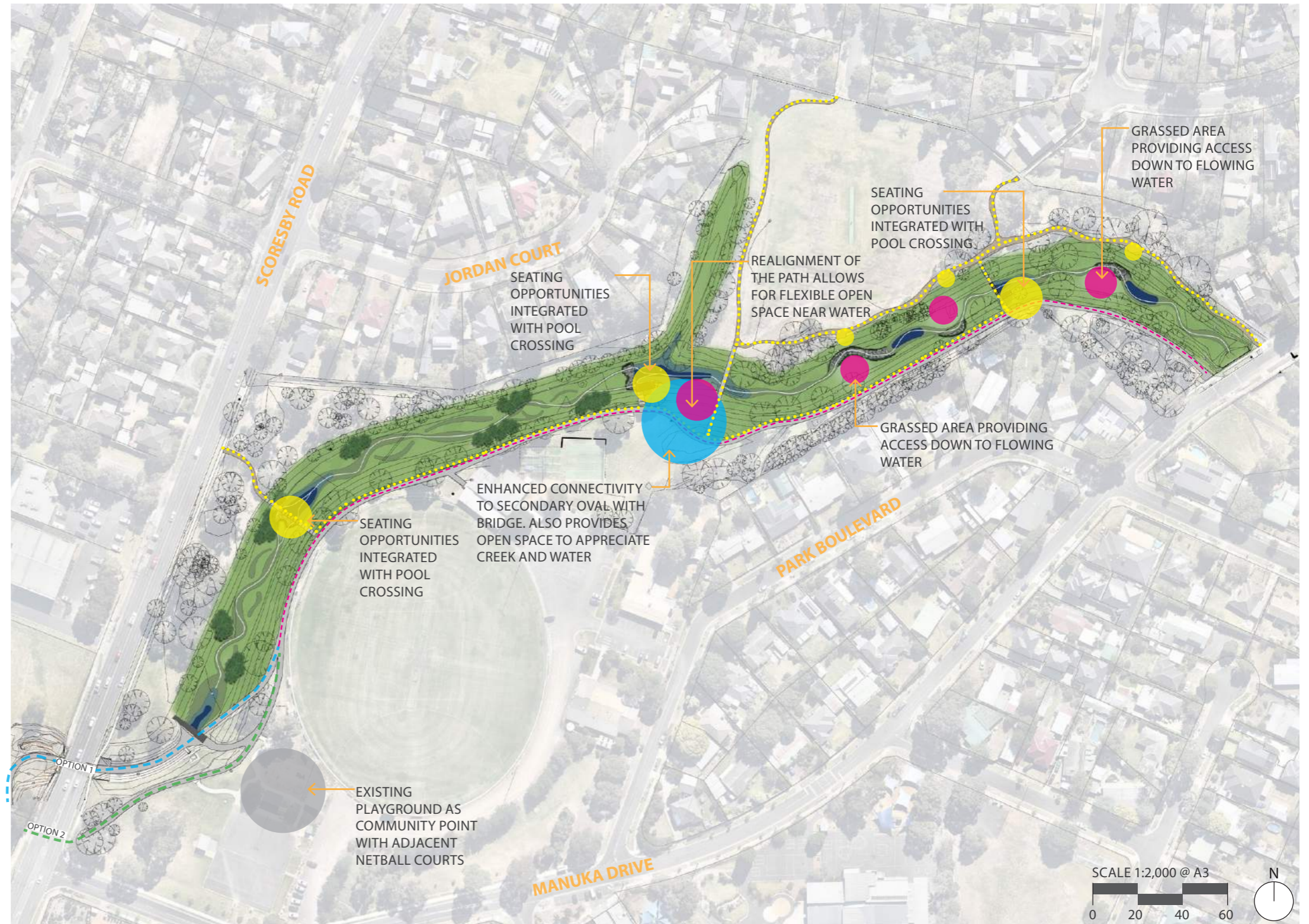
Based on the discussion, feedback and comments from the community consultation meeting, a concept plan was prepared to guide the process moving through to functional design.

The concept design formalises many of the ideas outlined previously and begins to add clarity around path networks and different creek profiles. There has also been a focus on providing a variety of flexible spaces that allow people to interact with the newly reimagined creek.

The extent of the project has been reduced in the west (Scoresby Rd. crossing) where it was deemed that a larger budget and engagement with VicRoads was needed to achieve an outcome that met both the community needs for connectivity and the enhanced waterway.

LEGEND

- MAIN COMMUNITY NODE
- FLEXIBLE OPEN SPACE
- SEATING OPPORTUNITIES
- - - FAST MOVEMENT PATH
- - - SLOW MOVEMENT PATH



OVERALL SKETCH PLAN





WESTERN PORTION

Along with incorporating opportunities for engagement with the waterway, the western section of the creek follows a sinuous path that breaks out in places to create isolated 'billabongs'. These provide places for increased diversity in vegetation species through a variety of soil moisture levels.

LEGEND

-  'WILD' ZONES WITH INCREASED PLANTING
-  CENTRELINE OF CREEK
-  PERMANENT POOLS
-  EPHEMERAL POOLS
-  POOL AND RIFFLE ZONES
-  NEW INFORMAL PATH



SKETCH PLAN (WESTERN PORTION)

EASTERN PORTION

Rockwork at the confluence of the two branches of the creek creates a standing pool that incorporates formal and informal areas to engage with the waterway.

The meandering of the creek is slightly more constrained in this portion due to the number of existing large trees and extended root zones. Diversity within the waterway is achieved through a series of pool and riffle zones.

To the north, an informal gravel path meanders through the densely planted 'wild' section, enhancing pedestrian connectivity and providing opportunities to sit and reflect.



SKETCH PLAN (EASTERN PORTION)

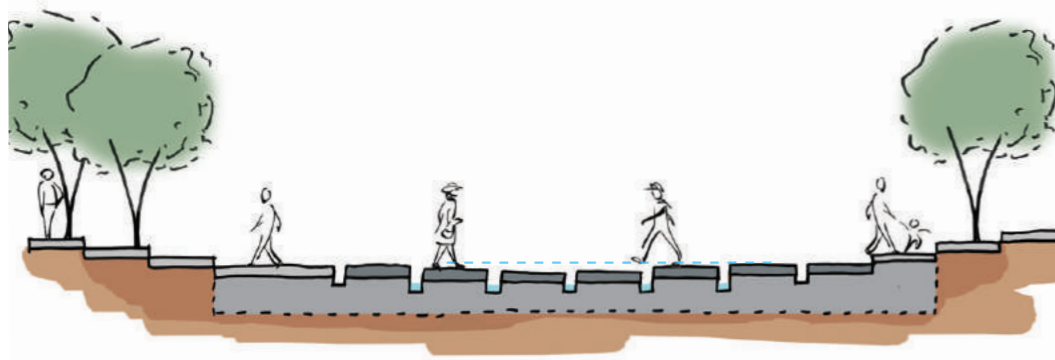
DESIGN RESPONSE



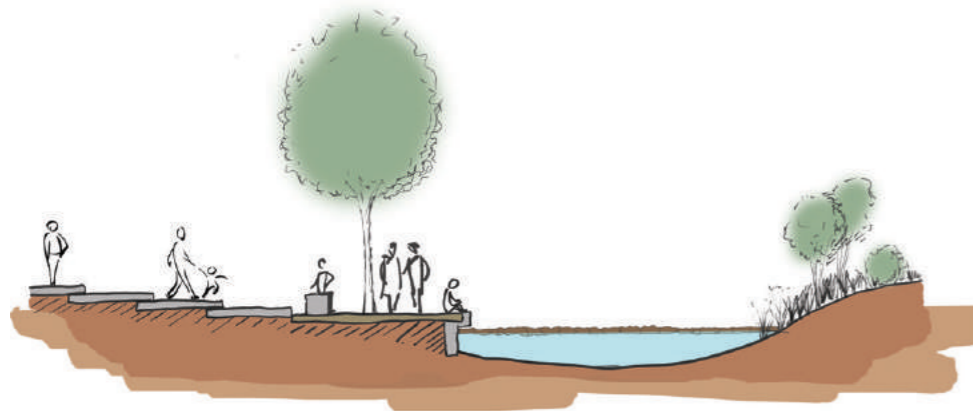


POOL TYPES

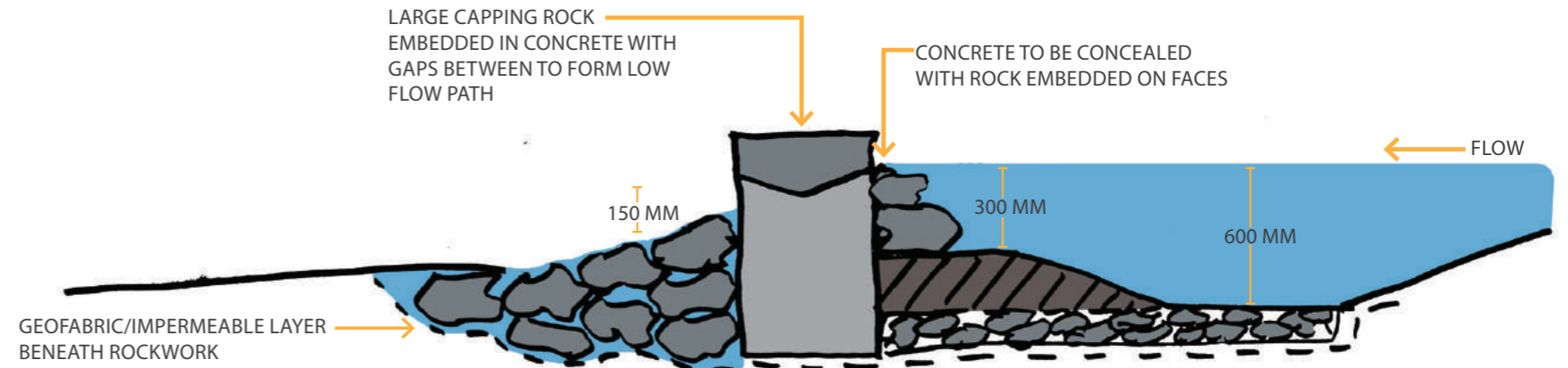
A series of interventions is proposed to pools and riffle zones with varying degrees of interaction.



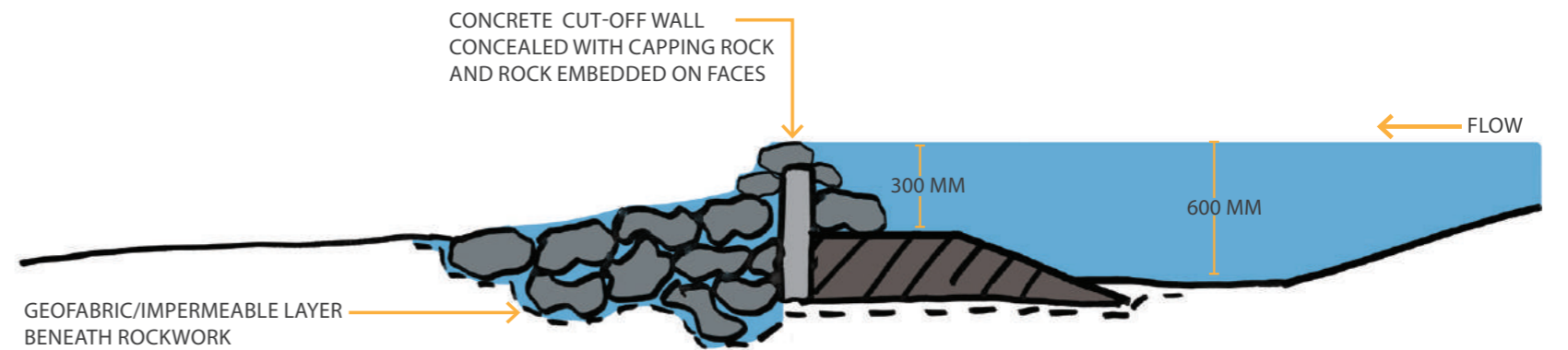
POOL TYPE A - STEPPING STONES



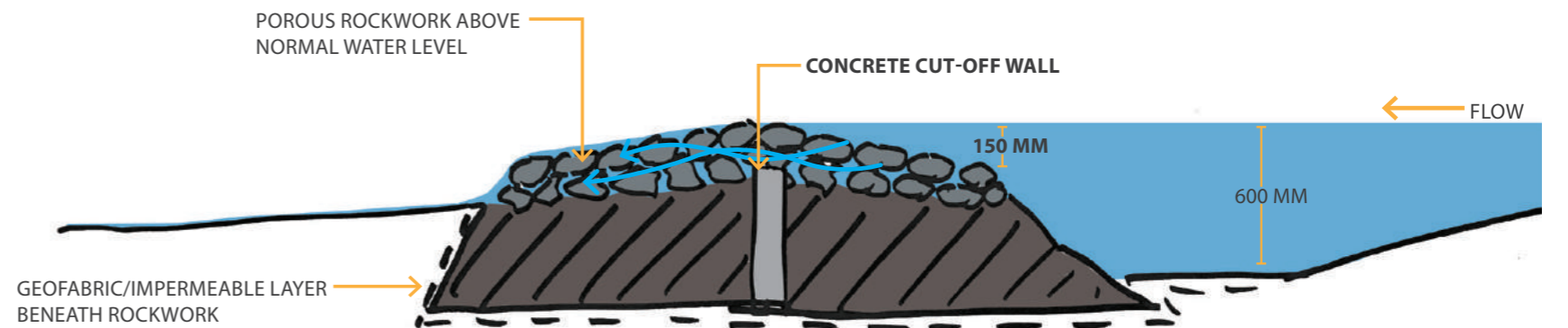
POOL TYPE B - EDUCATION PLATFORM



POOL TYPE A - STEPPING STONES



POOL TYPE B - EDUCATION ZONE



POOL TYPE C - RIFFLE AND POOL

MATERIALITY

A simple and robust suite of materials have been proposed throughout Blind Creek.

Concrete and gravel have been selected to provide legible and durable ground treatment for fast and slow moving circulation paths.

Given the scale of the site, large pieces have been placed throughout. These long benches, seating and structures have been located to provide flexible nodes and spaces for the community to occupy.



Broom Finished 2.5m Concrete Path



Granitic Sand



Concrete Stepping Structures



Timber Seating



Timber Bench & Table



Rock Riffle Zones



Contrasting Materials



Bridge



Stepping Boulders

SECOND COMMUNITY WORKSHOP

COMMUNITY DESIGN FEEDBACK

The design response was shared with the community through a workshop process. This was aimed at hearing the community's thoughts and perspectives on the development of the concept. Breaking into four groups that reflected the themes previously identified, the community had the opportunity to say what they liked about the design, and any comment or suggestions for improvement.



- Includes places for kids to explore
- Balance between green open space, people using area for recreation and revegetation to improve biodiversity
- Great reflection of ideas from workshop 1
- Good balance between active and passive groups' use of space (footy/cricket and recreational walkers/cyclists)
- Good connectivity

SENSE OF PLACE

- How do students get to site?
- What measures/studies undertaken of determine sediment/silt build up along creeks
- Loss of visibility to creek/water if reeds are planted
- What about rubbish bins, drinking water fountains and doggy do bags?

- Includes diverse, indigenous species of local provenance
- Opportunities to use site for education purposes
- Overall design is good
- Diversity of aquatic habitat

NATURAL ENVIRONMENT

- Rejuvenate indigenous style painting on the concrete lead into the underpass
- Include reminders of first people living in the area
- Opportunity for a fern gully at pipe inlet / at second oval
- What models/methods are guiding the physical/biological design?



As Scoresby Road is a noisy area because of cars, good to keep reflective areas towards Manuka Drive

Quiet contemplative space

COMMUNITY INTERACTION

Annual bike ride along Blind Creek shared path in March– Oppy/Knox Ride

Fern gully and seating at second oval

Improve play area for kids near bridge crossing. Parents more likely to let kids play there than go across the oval to formal play area

Oxbow lake on drain inlet/wet zone

Like visuals of dense planting

Having areas with a habitat focus

Improves habitat corridor for wild life movement

Maintains long linear pedestrian cyclist connectivity

Like the split, different style of paths - faster on the south side, slower on the north

Education areas close to kindergarten and primary school

Formalising a well used goat track from Scoresby Road

Opportunity to use materials on bridge that are of interest – enhance visibility to water

ACCESS AND CONNECTIVITY

Well used pedestrian island at Scoresby Road currently, especially for school kids

Lack of colour in plant selection

Seating for cricket, adjacent to the pine trees at smaller oval

Improve connectivity to Fairhills Primary School

How do we keep people on the paths? Do we need to design for this? Maybe denser planting to keep people on the paths/where we want them to be

Do we need the most upstream crossing? Could it be just cascade/rocks/falls?



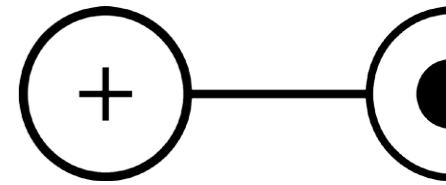
WHAT IS GOOD...

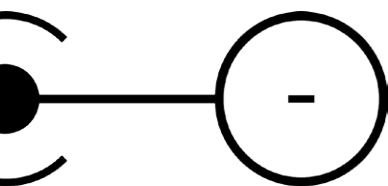


WHAT IS MISSING...

COUNCIL PERSPECTIVE ON CURRENT SITE

A similar workshop process was then held with the main stakeholder - Knox City Council. This began with the identification of the opportunities and challenges of the existing site.





COUNCIL VISION

Following on from identifying the opportunities and challenges, the workshop participants set out their vision for Blind Creek and ideas for realising this.

WELL-CONNECTED SPACE

Connectivity

Community connectivity

Connectivity – north/south and east/west

Hierarchy of paths for a range of user groups

Provide grade separation (separate culverts/creek/path)

SAFE SPACE

Safe space

Safety for all – users/uses

Safe connectivity to meet current standards

Safe equitable access internal and external linkages



NATURAL SPACE

Wildlife corridor

Improve habitat
(understory canopy)

Thriving, connected and resilient natural environment

CULTURAL/STORYTELLING SPACE

Engage with aboriginal community (information/ art/ history/ culture)

Culture and education

ENGAGING SPACE

Tranquil/peaceful space

Spaces to access and interact with water; short term
– engage with water, long term – swimmable

Natural places to explore

Activate, walkability –
desirable spine not roads and cars

Public amenity

Attracting new user groups

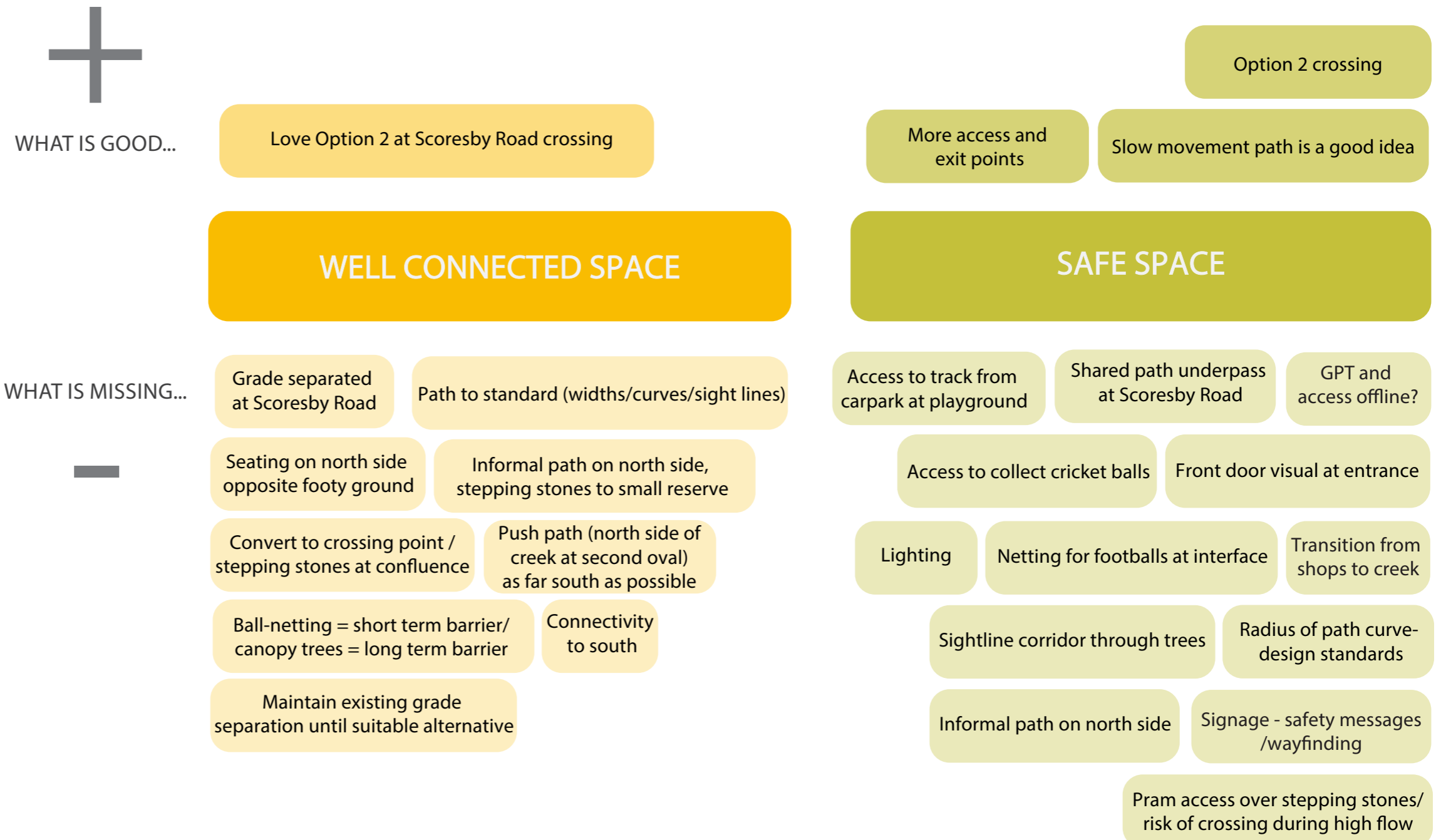
New destinations that provide passive interaction with nature

COUNCIL DESIGN REVIEW

The workshop finished with a review of the current design response against the shared vision for Blind Creek.

Throughout this process it became obvious that the Blind Creek project couldn't meet all of the desired objectives for the area.

However, it has served as a catalyst for a renewed masterplan of the area would capitalise on the Reimagining Your Creek project to extend and integrate the improved liveability outcomes for the community.





Better access

Like the pools, and the expanded ephemeral zones

Minimise additional construction of paths near Manuka Drive

Minimal and considered lighting to support fauna

Support the opportunity for children/people to explore on unconstructed goat paths

Increase understory to support diversity of bird life

Planting needs to be local provenance to support Knox Genetic Integrity Policy

More vegetation for increased habitat connectivity

Love Option 2 at Scoresby Road for shared path, supports pedestrian safety and safer road crossing. Better instream ecological outcomes supports a greater number of user groups, reduces maintenance issues, supports Lewis Park Master Plan

NATURAL SPACE

Balance open space with improving biodiversity and urban forests

Stepping stones will be a litter trap, increase community understanding of where rubbish goes!

Improve play area for kids near bridge crossing. Parents more likely to let kids play there than go across the oval to formal play area

Increase vegetation for screening at active space

Desire for open space vs canopy cover. What is the definition of open space?

Support a more vegetated space rather than grassed area to allow for more connected habitat (Manuka Drive)

Continuous uninterrupted path encourages sustainable transport (grade separation)

Having areas with a habitat focus

Education areas close to kindergarten and primary school

Like visuals of dense planting

Maintains long linear pedestrian cyclist connectivity

Like the split, different style of paths - faster on the south side, slower on the north

Improves habitat corridor for wild life movement

Formalising a well used goat track from Scoresby Road

Opportunity to use materials on bridge that are of interest - enhance visibility to water

CULTURAL SPACE

Well used pedestrian island at Scoresby Road currently, especially for school kids

Lack of colour in plant selection

Improve connectivity to Fairhills Primary School

Seating for cricket, adjacent to the pine trees at smaller oval

How do we keep people on the paths? Do we need to design for this? Maybe denser planting to keep people on the paths/where we want them to be

Do we need the most upstream crossing? Could it be just cascade/rocks/falls?

Its good, like it as it is!

Interaction with water

Good balance of active and passive

Wheelchair/ pram/ motor scooter accessible

Like connection to nature

Great idea to have education space

ENGAGING SPACE

Mindfulness section of new creek keep separate from noisy active hub of creek at downstream

Near bridge and pavilion space

Maintenance access to litter traps

Viewing area for mobility impaired users

Provide connection from CP to ped network

Relocate playground to central hub area

Equitable access and engaging space for all

Crossing opportunity at Scoresby Road

Desire for open space vs canopy cover. What is the definition of open space?

Crossing on grade

Improved connection to site

Landmark at entrance, hierarchy of space

Prams, bikes etc need to go long route to other pedestrian crossing at Scoresby Road

Orientation - where am I?

CONCEPT DESIGN

CONCEPT PLAN

The overall feedback from the consultation sessions was generally positive, with recommendations for changes predominately focused on detail design outcomes such as plant species and artistic expressions of culture.

Feedback on the spatial elements of the design that were incorporated into the concept design included:

- Enhancing informal connectivity on the northern side of the creek - fully accessible.
- Refining the location of crossing points to correspond with pedestrian desire lines.



OVERALL CONCEPT PLAN

CONCEPT DESIGN





DETAIL PLANS



EDUCATION ZONE



REFLECTIVE ZONE

CONCEPT DESIGN

REFINED CONCEPT PLAN

The original concept plan was then taken on-site and ground-truthed with Knox City Council.

Several minor changes were came out of this round of consultation including:

- the removal of the gravel path to the north of the creek and around the secondary oval.
- mindful of future development, a second gravel path was added to connect to Scoresby Rd.
- Additional planting around open space areas in the central node.
- Fences to ovals to help minimise balls getting lost in the creek.

The western end of the Reimagining Blind Creek project was also discussed. Importantly, it was emphasised the delivery a long term positive outcome for the community and the creek's ecology more broadly, needed to be considered. This would involve the separation of the pedestrian and cycleway from Blind Creek, allowing unhindered flow below Scoresby Rd.

Separation of the path can be achieved through either an on-grade option, controlled by lights, or grade separation that allows users to cross either above or below Scoresby Rd.



OVERALL CONCEPT PLAN

CONCEPT DESIGN





DETAIL PLANS

LOW FENCE TO EDGE OF CRICKET FIELD TO HELP DEFINE THE SPACE AND STOP BALLS ROLLING INTO CREEK.

INFORMAL MULCHED PATH

INCREASED PLANTING TO OPEN GRASS AREAS



EDUCATION ZONE



REFLECTIVE ZONE

VISUALISATIONS

The central node in the concept sits at the confluence of Blind Creek and the northern drain. This area provides an opportunity for a large pool to be created with various elements integrated into the design to allow people to engage with the waterway.



EDUCATION ZONE AND MAIN POOL
CONCEPT DESIGN





The FluckerPost Project
Can you Help?
Help us to understand how this environment is changing.

Instructions:

1. Place your phone or camera on top of this post.
2. Take a photo of the view.
3. Email the photo to fluckerpost@viva.edu.au.

View your contribution at www.theeveryplace.org.au

The project is supported by:

In a large rain event the crossing point disengages - warning people that it is unsafe to cross.



EDUCATION ZONE AND MAIN POOL IN RAIN EVENT

CONCEPT DESIGN





The FlakerPost Project
Can you Help?
Help us to understand how this environment is changing.

Instructions:

1. Place your phone or camera on top of this post
1. Take a photo of the view
1. Email the photo to flakerpost@parks.nsw.gov.au

View your contribution at www.discoverparks.org.au

THE GREAT AUSTRALIAN WALK
MAZEIN
NSW
UNIVERSITY OF WOLLONGONG
NSW GOVERNMENT
NSW DEPARTMENT OF HERITAGE AND CULTURE

Opportunities for seating are incorporated at informal crossing points. The crossing points also provide a link between the southern 'fast' path and the more informal northern path.



WESTERN CROSSING POINT

CONCEPT DESIGN





In the eastern reaches of Blind Creek, grassy areas in the channel open up as the creek meanders. This allows people the opportunity to get down 'in' the creek and use the space. Further upstream the vegetation intensifies and provides higher ecological values.



GRASSED AREAS WITHIN CREEK MEANDER
CONCEPT DESIGN



