

Stony Creek rehabilitation

August 2019

You're invited to a community event!

Over the last six months, you've provided valuable local knowledge and important insights into community values and expectations for rehabilitating Stony Creek. Your ideas, aspirations and priorities were used to create a ten-year plan to enhance and protect the condition of the creek.

To say thank you for your input, we're inviting you to a community event to launch the final Stony Creek Rehabilitation Plan. Come along to find out what actions are already underway, what will be happening over the next 12 months, and how you can get involved.

Community event



**Sunday 8
September**

11am – 2pm

Where:

Cruickshank Park,
near Tuppen St and
junction of Austen
Cres E and Maryston
St, Yarraville.

What's on?

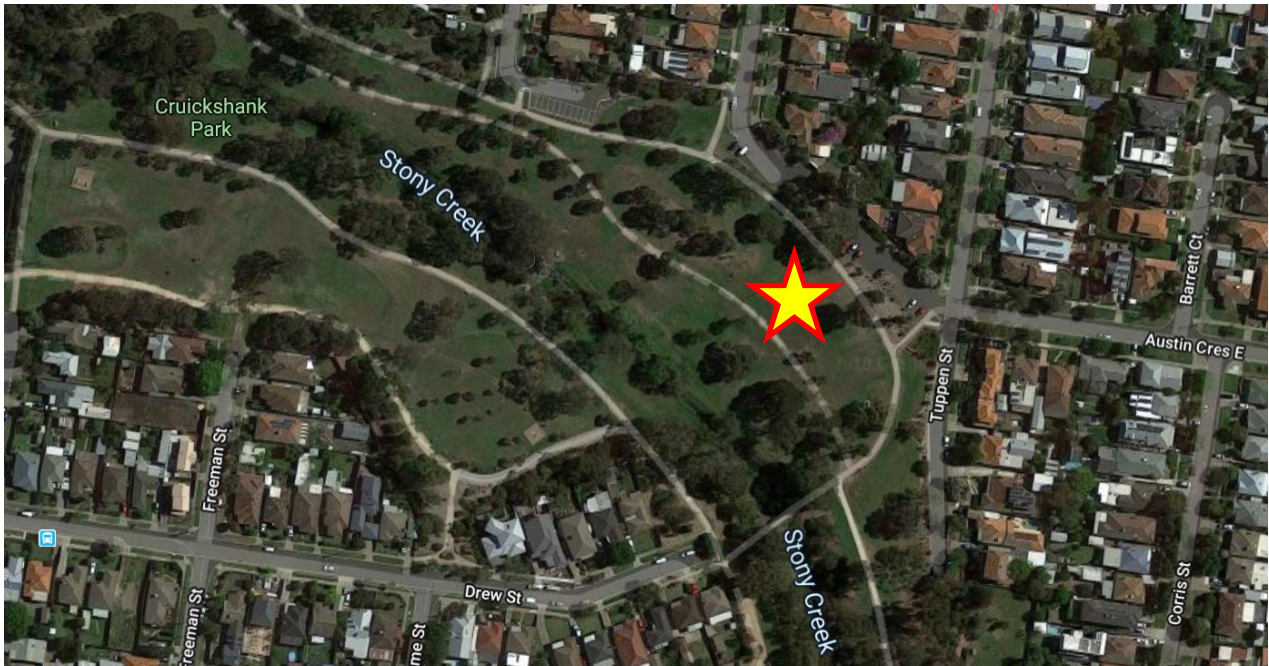
- ❖ BBQ and coffee van – grab a free sausage and drink!
- ❖ Planting activity – get involved in helping to create habitat and improve local amenity by planting native shrubs and grasses.
- ❖ A Melbourne Water Waterwatch program activity – get to know your water bugs by taking part in a macroinvertebrate identification activity.
- ❖ Hands-on educational and interactive activities for the kids – A team from 'Wild Action' will be there to showcase a selection of animals that are found in the local region. The interactions will involve quirky fun facts about the animals as well as information about the importance of protecting the natural environment, habitat corridors, litter and pollution, and responsible pet ownership.



Come and talk to us!

Staff from Melbourne Water, Maribyrnong Council and the Victorian Environment Protection Authority (EPA) will be there to answer questions you may have about the recovery and rehabilitation of Stony Creek.

Location for community event



If you haven't already, make sure you 'follow' the Stony Creek Rehabilitation Your Say page to receive news updates.

Visit: yoursay.melbournewater.com.au/stony-creek-rehabilitation.

Keep up to date with what's happening

For more information about the rehabilitation planning for Stony Creek, contact us on:

T: 131 722

E: stonycreekrehabilitation@melbournewater.com.au



Interpreter

For an interpreter, please call the Translating and Interpreting Service (TIS National) on 13 14 50



Like us

facebook.com/melbournewater



Follow us

@MelbourneWater



Visit us

www.melbournewater.com.au