



### City Centre Streets for People Feedback Survey – Frequently Asked Questions

COVID-19 has changed the way we live, work and interact with one another. The way we think about our public spaces, and how we use them may also have changed. Nelson City Council is seeking your feedback as we re-evaluate our city centre to determine if it's still meeting our community's needs, or if it's time for a rethink.

This FAQ provides additional information to assist the public in providing feedback on the City Centre Streets for People survey <https://shape.nelson.govt.nz/city-centre-streets-for-people>

#### **Q Why are we reconsidering the pedestrian areas in the city centre?**

The Nelson City Centre is one of the four priorities stated in Nelson City Council's 2018-28 Long Term Plan. Within that is the [City Centre Programme Plan](#), which is people-focused and aims to make our city centre a social hub where people "linger longer".

In the past year, Council has undertaken a winter and summer [Public Life Survey \(PLS\)](#) to measure the role pedestrians play in the city centre, how they move and observing stationary activities.

The PLS also looks at age, gender and other pedestrian user characteristics. This data enables Nelson to plan its city centre to make it a better place for people of all age, gender and economic means. From this work, we know that Trafalgar, Hardy and Bridge Streets carry most of our pedestrians, and those areas are therefore our focus for enhancing pedestrian mobility.

#### PEDESTRIAN ACTIVITY AT A GLANCE SUMMER



**140,274**

COMBINED PEDESTRIAN  
MOVEMENTS REGISTERED  
ACROSS BOTH SURVEY DAYS

**24** SURVEY  
LOCATIONS



**63,426**  
WEEKDAY  
MOVEMENTS



**76,848**  
SATURDAY  
MOVEMENTS



21% MORE FOOT  
TRAFFIC ON A  
SATURDAY THAN  
A THURSDAY

TRAFALGAR STREET FOOT  
TRAFFIC ACCOUNTS FOR  
52% OF ALL REGISTRATIONS



**SATURDAY**  
FOOT TRAFFIC PEAKS  
BETWEEN 11AM & 1PM  
AND ACCOUNTS FOR 33% OF  
ALL REGISTRATIONS FOR THE DAY



FOOT TRAFFIC AFTER  
6PM IS CONSISTENT ON  
BOTH SATURDAYS AND  
WEEKDAYS



**WEEKDAY**  
FOOT TRAFFIC PEAKS  
BETWEEN 12PM & 2PM

## PEDESTRIAN ACTIVITY AT A GLANCE WINTER



# 98,532

PEDESTRIAN MOVEMENTS REGISTERED ACROSS TWO SURVEY DAYS

**24** SURVEY LOCATIONS



44,586 WEEKDAY MOVEMENTS

53,946 SATURDAY MOVEMENTS



21% MORE FOOT TRAFFIC ON A SATURDAY THAN A THURSDAY

TRAFALGAR STREET FOOT TRAFFIC ACCOUNTS FOR 45% OF ALL REGISTRATIONS



10AM 11AM 12PM

# 46%

OF ALL REGISTERED FOOT TRAFFIC THROUGHOUT THE SATURDAY SURVEY OCCURS BETWEEN 10AM & 1PM



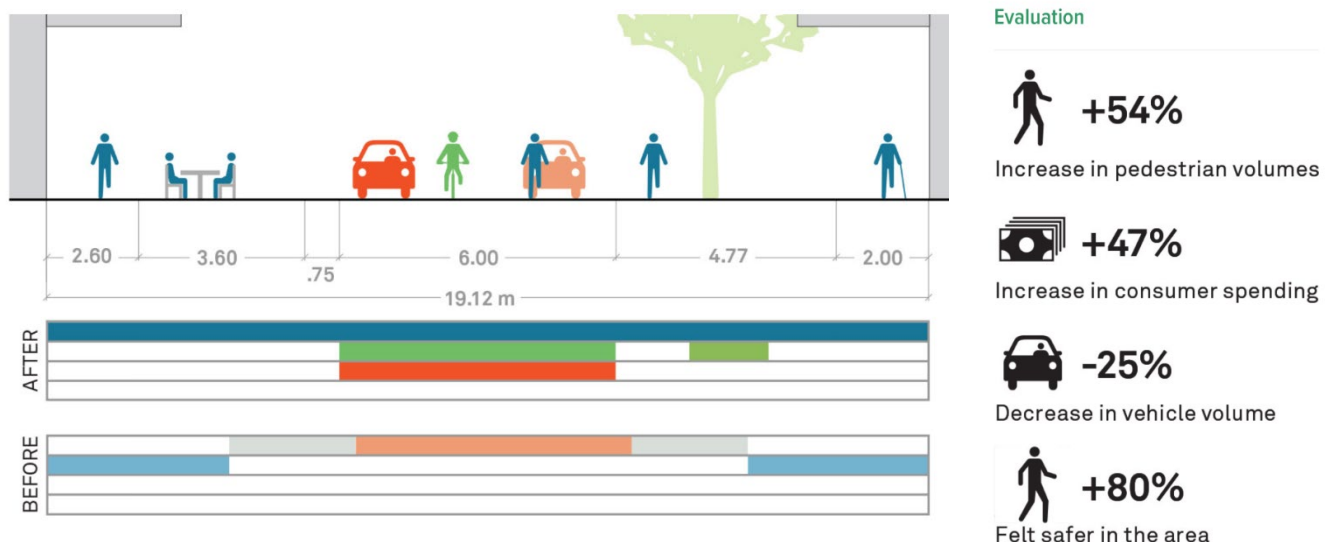
WEEKDAY FOOT TRAFFIC PEAKS BETWEEN 1 & 2PM

### Q Does increasing the footpath width result in better activity, spending and safety?

The attractiveness, safety and quality of our city-centre streets is key to enabling more people to walk in and around the city centre to work, live, shop, hang out and dine.

Investment in better streets and places delivers quantifiable commercial returns. Businesses, residents, developers and visitors all benefit from investment in the public realm and walkability.

Auckland Council measured pedestrian activity, spending and safety in the Fort Street shared space:



### Q What are the options Council is seeking feedback on?

- 1. Widen the footpath to six metres on both sides of Trafalgar Street in the area stretching from Halifax to Hardy Streets, and on the south side only of Hardy and Bridge Streets. Parking would become parallel on Trafalgar Street, and existing parallel parking on Hardy and Bridge Streets restricted to one side.
- 2. Widen the footpath to 8.5 metres on both sides of Trafalgar Street in the area stretching from Halifax to Hardy Streets, and six metres on the south side only of Hardy and Bridge Streets. Trafalgar St parking is removed and existing parallel parking on Hardy and Bridge Streets restricted to one side.
- 3. Pedestrianise Trafalgar St between Halifax and Hardy Streets, and widen the footpath to six metres on the south side only of Hardy and Bridge Streets. Existing parallel parking on Hardy and Bridge Streets restricted to one side. Feedback is sought on how often to close Trafalgar St to cars, eg on weekdays only, weekends only, or Saturdays and events.
- 4. Leave the streets as they are.

The options are explained in more detail in the feedback survey <https://shape.nelson.govt.nz/city-centre-streets-for-people>

**Q What does semi-permanent mean?**

This means the measures used to implement the options are reversible. Footpath extensions would be achieved using wooden decking extensions, and planters. For option 3, where pedestrianisation of Trafalgar St is proposed, the options could be semi-permanent or permanent, depending on your feedback. If that option is preferred following this feedback process, a further consultation period will take place to work out those details.

Using semi-permanent design elements to achieve the footpath widening also means those elements can be built off-site and installed quickly, to minimise disruption to daily business activity in the city centre.

**Q When will the public feedback process open and close?**

The options will go out for public feedback on June 2. You will have until 5pm on 26 June 2020 to submit your feedback.

**Q How can I submit my feedback?**

Feedback can be submitted a number of ways:

[A Shape Nelson online survey - https://shape.nelson.govt.nz/city-centre-streets-for-people](https://shape.nelson.govt.nz/city-centre-streets-for-people)

A paper copy, sent or delivered to Civic House at Civic House, 110 Trafalgar Street, Nelson.

Phoning customer services (03 546 0200) and a staff member can fill out a survey for you

**Q What is the purpose of this feedback?**

Nelson City Council will collate and consider the feedback received on the proposed options, including views of those potentially affected and the wider community, on the options before deciding what the next steps for the project will be.

**Q What are the timeframes around the City Centre Streets for People measures?**

The City Centre Streets for People survey opened on June 2, 2020 and will be available until 5pm June 26, 2020.

Following this, the feedback received will be collated and reported back to Council in July, where the next steps will be considered.

**Q What effect will the City Centre Streets for People options have on existing outdoor dining spaces?**

This will be discussed individually with leaseholders if any changes are required. There is room for factors such as this to be incorporated into the design of each option. We encourage you to put your ideas into the feedback survey.

**Q Parking – how many parks will be affected, what are the time limits and what number of mobility parks and loading zones will there be?**

Trafalgar Street, between Halifax and Hardy Streets, provides 134 angle car parks. Hardy Street provides 25 parallel parks on the southern side and Bridge Street provides 36 parallel parks on the southern side.

The options will reduce the number of car parks outside businesses. On-street parking, particularly on Trafalgar Street, would be adapted to meet the demand for Mobility Parks, Loading Zones and Taxi stands, as well as providing for customer parking.

The exact number will be determined by the final design, considering your feedback, and the need to address any concerns about access, deliveries and other needs.

**Q How do the new Pay-By-Plate meters fit in?**

Throughout June, Council will be replacing all parking metres with new pay-by-plate machines. Council will enforce time limits throughout this period, but the new machines won't be able to accept payment until July 1.

This means:

- Drivers do not need to display a ticket or pay to park
- Drivers must only stay for the sign-posted time limit of their park
- Drivers that overstay the limit are liable to receive a fine
- Drivers that park dangerously (eg. too close to an intersection) can also be fined

Customers will still get their 1-hour free, and transactions on the new machines will be able to be made by contactless payment (PayWave and App) as well as by coin, from July 1.

Some meters are moving as the need to have meters within a short walk of every car park is no longer required. Council will provide a plan showing where the meters will be positioned should retailers wish to see.

More information can be found in [this Our Nelson story](#).

**Q When is the speed limit changing and for how long?**

The speed limit decreased to 30km/h from 50km/h in the central city on 9 May.

Under clause 7.1(2)(b) of the Land Transport Rule the setting of an Emergency Speed Limit can be authorised by a council's Chief Executive in the case of an emergency such as an epidemic.

An emergency speed limit can only apply for a maximum of 12 months. However, Council will consider consulting the public later this year on making the 30km/hr city centre limit permanent as part of a speed limit bylaw review.

An emergency speed limit of 30kmph is set for the roads (or parts of roads) listed below.

Hardy Street – From Rutherford Street to Collingwood Street  
Bridge Street - From Rutherford Street to Collingwood Street  
Trafalgar Street – From Hardy Street to Halifax Street  
Church Street  
Park Street  
Hope Street  
Morrison Street  
Halstead Street  
Montgomery Square and its entrance and exit lanes from Bridge Street, Rutherford Street and Hardy Street  
Buxton Square and its entrance and exit lanes, including Alma Street from Buxton Square to Bridge Street  
Wakatu Square and its entrance and exit lanes, including Achilles Avenue, Wakatu Lane, and Haven Road from Rutherford Street to Bridge Street.