

# TECHNICAL NOTE

**TECHNICAL NOTE NUMBER:** 03

**DATE:** 19 March 2019

**SUBJECT:** Multi-function fauna barriers south of Governor Road

## **PURPOSE:**

This technical note is provided in response to the Inquiry and Advisory Committee's request in respect of multi-function fauna barriers proposed south of Governor Road.

This technical note is provided in three parts:

**Part A:** Details of the multi-function fauna barriers proposed south of Governor Road in the reference design for the project;

**Part B:** Details of the multi-function fauna barriers proposed south of Governor Road by MRPV's Version 2 EPRs, dated 14 March 2019; and

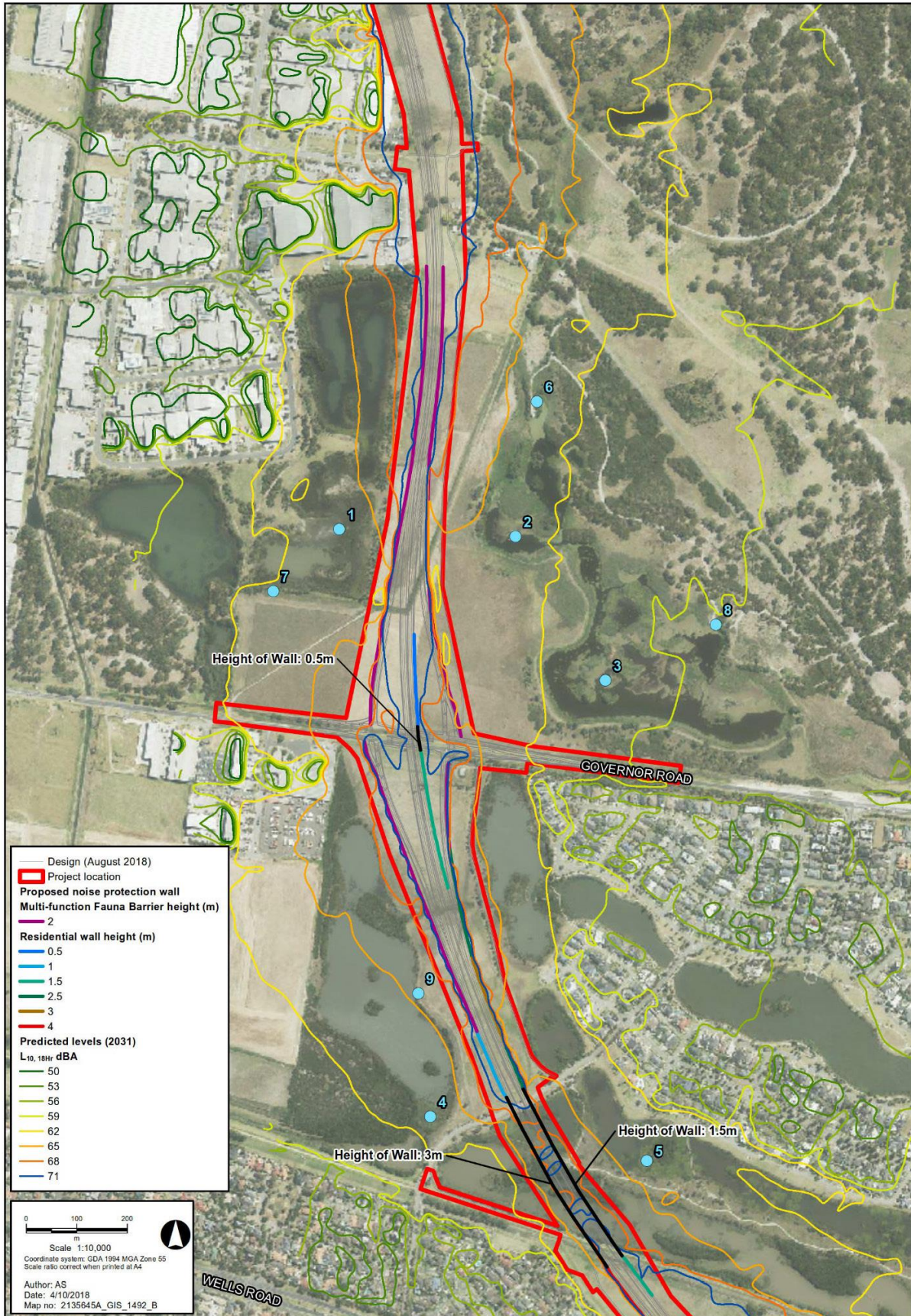
**Part C:** Summary of the differences between multi-function fauna barriers proposed south of Governor Road as part of the reference design and as part of MRPV's Version 2 EPRs.



## Part A: Details of the multi-function fauna barriers proposed south of Governor Road in the reference design for the project

1. The reference design for the project included multi-function fauna barriers as well as noise walls along sections of the project alignment between Governors Road and the Melbourne Water levy to the south, as follows:
  - a. **Waterways Wetlands (north-west):** on the west side of the new roadway, provision of a 2 metre high multi-function fauna barrier extending from Governor Road to the south approximately 600 metres, transitioning to a 1 metre high noise wall to be provided from that location to Bowen Park Way
  - b. **Waterways Wetlands (north-east):** on the east side of the new roadway, provision of a 2 metre high multi-function fauna barrier extending from Governor Road to the south approximately 200 metres, transitioning to a 2.5 metre high noise wall to be provided from that location to the south approximately 175 metres, transitioning to a 3 metre high noise wall to be provided from that location to the south approximately 200 metres, transitioning to a 2.5 metre noise wall to be provided from that location to Bowen Park Way
  - c. **Waterways Wetlands (bridge structure):** provision of a 3 metre high noise wall on the western side of the new western roadway bridge structure extending from Bowen Park Way south to the Melbourne Water Levy, and provision of a 1.5m metre high noise wall on the eastern side of the new eastern roadway bridge structure extending from Bowen Park Way south to the Melbourne Water Levy
2. The location and extent of the multi-function fauna barriers and noise walls are depicted in Figure 7.2 on page 188 of the main report of Annexure C to the EES, which is extracted as Figure 1 below.

Figure 1: Location and extent of multi-function fauna barriers and noise walls proposed south of Governor Road in the reference design for the project



## Part B: Details of the multi-function fauna barriers proposed south of Governor Road by MRPV's Version 2 EPRs, dated 14 March 2019

3. The location and extent of the multi-function fauna barriers proposed by MRPV's Version 2 EPRs, dated 14 March 2019, along sections of the project alignment between Governors Road and the Melbourne Water levy to the south are, as follows:
  - a. **Waterways Wetlands (north-west):** on the west side of the new roadway, provision of a 2 metre high multi-function fauna barrier extending from Governor Road to the south approximately 600 metres, transitioning to a 1 metre high multi-function fauna barrier to be provided from that location to Bowen Park Way
  - b. **Waterways Wetlands (north-east):** on the east side of the new roadway, provision of a 2 metre high multi-function fauna barrier extending from Governor Road to the south approximately 200 metres, transitioning to a 2.5 metre high multi-function fauna barrier to be provided from that location to the south approximately 175 metres, transitioning to a 3 metre high multi-function fauna barrier to be provided from that location to the south approximately 200 metres, transitioning to a 2.5 metre multi-function fauna barrier to be provided from that location to Bowen Park Way
  - c. **Waterways Wetlands (bridge structure):** provision of a 3 metre high multi-function fauna barrier on the western side of the new western roadway bridge structure extending from Bowen Park Way south to the Melbourne Water Levy, and provision of a 3 metre high multi-function fauna barrier on the eastern side of the new eastern roadway bridge structure extending from Bowen Park Way south to the Melbourne Water Levy

## Part C: Summary of the differences between multi-function fauna barriers proposed south of Governor Road as part of the reference design and as part of MRPV's Version 2 EPRs.

4. The differences between multi-function fauna barriers proposed south of Governor Road as part of the reference design and as part of MRPV's Version 2 EPRs are summarised below:
  - a. **Waterways Wetlands (north-west):** the wall heights and lengths are unchanged, however, the 1 metre high noise wall is now to be specified in EPR B1 as a multi-function fauna barrier;
  - b. **Waterways Wetlands (north-east):** the wall heights and lengths are unchanged, however, the noise walls are now to be specified in EPR B1 as multi-function fauna barriers
  - c. **Waterways Wetlands (bridge structure):** the noise walls are now to be specified in EPR B1 as multi-function fauna barriers, and the height of the multi-function fauna barrier on the east side of the new eastern roadway bridge structure is increased by 1.5 metres so that it is now proposed to be 3 metres high