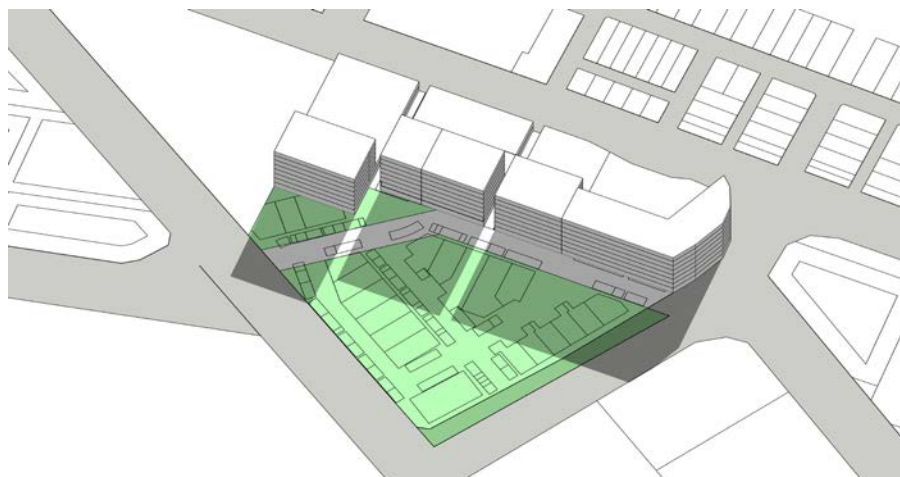


## Lorimer - Revised FAR (5.4:1) modelling with 8 storey street wall to park - 07.05.2018

**Submitter 79** - 870 Lorimer Street, Port Melbourne – GFA 18,371sqm

**Submitter 130** - 880 & 884 Lorimer Street, Port Melbourne – GFA 24,554sqm

**Submitter 162** - Lorimer Place Owners Corporation, Port Melbourne  
Part 22 - GFA 9,313sqm  
Part25 – GFA 20,336sqm



Shadows on 22nd June (winter solstice) at 11:30am