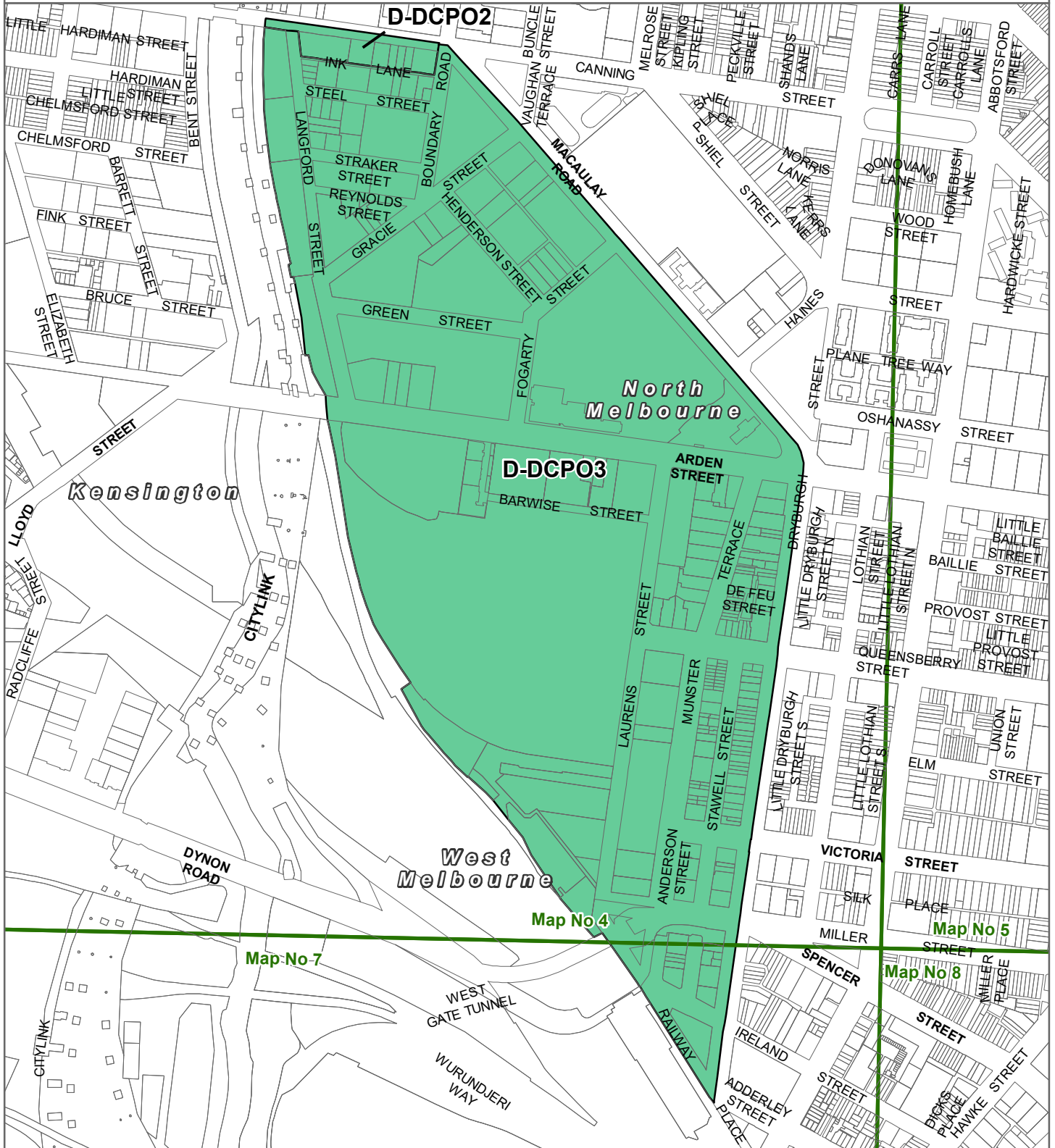




MELBOURNE PLANNING SCHEME - LOCAL PROVISION AMENDMENT C407melb



LEGEND

-  D-DCPO - Area to be deleted from a Development Contributions Plan Overlay
-  Local Government Area



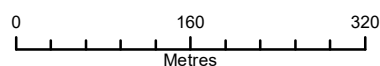
Part of Planning Scheme Maps 4DCPO & 7DCPO

Disclaimer

This publication may be of assistance to you but the State of Victoria and its employees do not guarantee that the publication is without flaw of any kind or is wholly appropriate for your particular purposes and therefore disclaims all liability for any error, loss or other consequence which may arise from you relying on any information in this publication.

© The State of Victoria Department of Environment, Land, Water and Planning 2021

Planning Group
Print Date: 29/07/2021
Amendment Version: 5



Environment,
Land, Water
and Planning