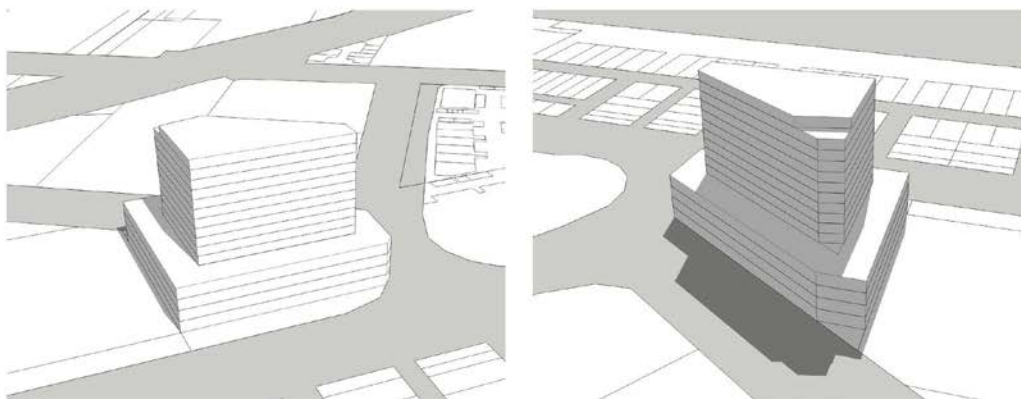


## Lorimer 3D massing and shadow study summary - 13.04.2018

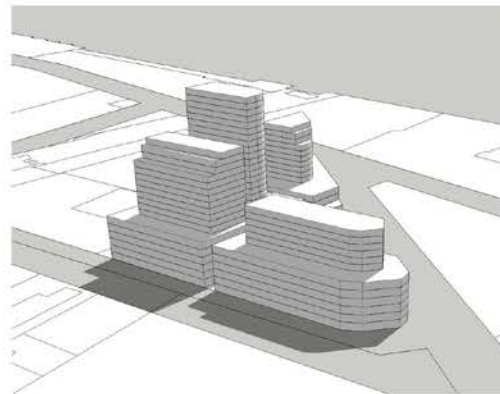
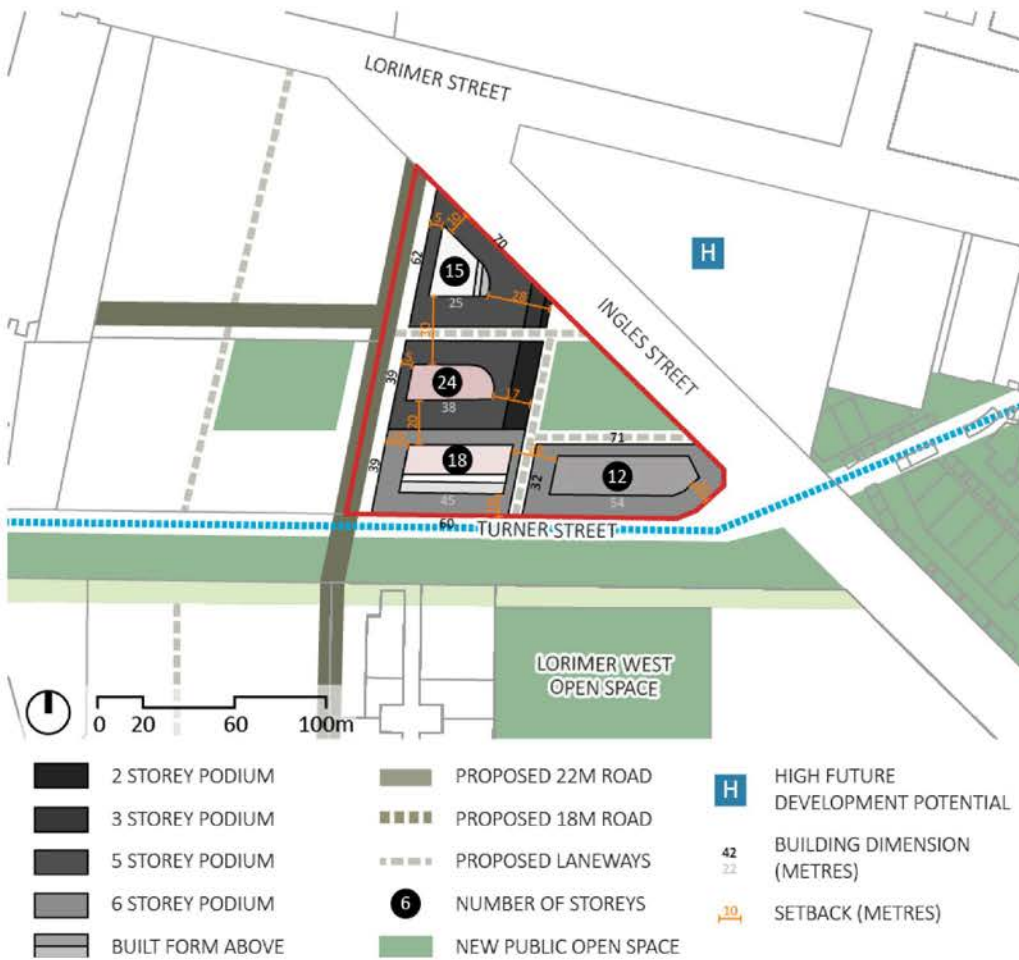
Undertaken to inform Mark Sheppard's Lorimer Precinct Evidence dated March 2018.

### 111 LORIMER STREET, DOCKLANDS



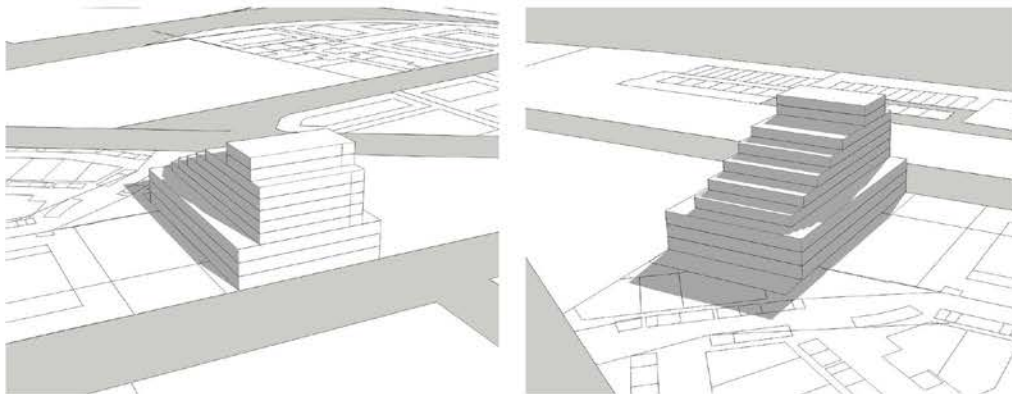
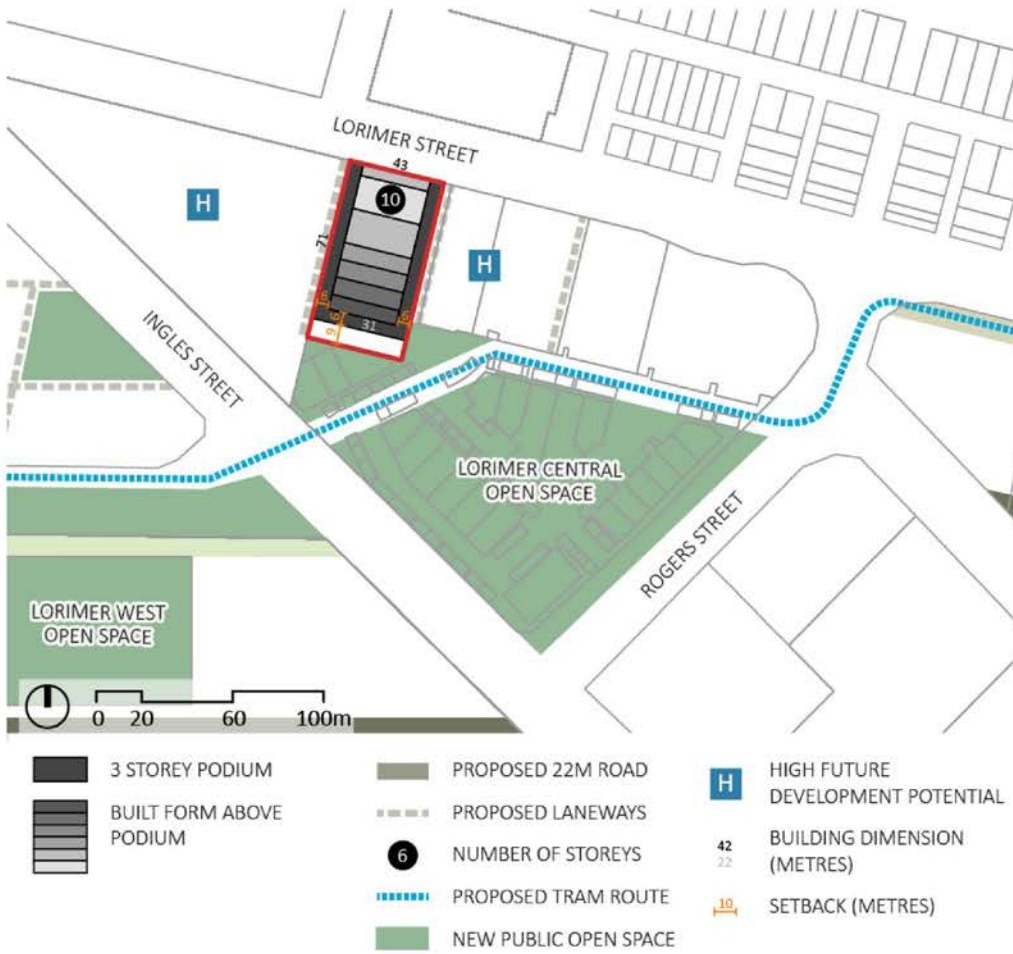
Shadows as on 22nd September at 12:00pm

**351-387 INGLES STREET, PORT MELBOURNE**



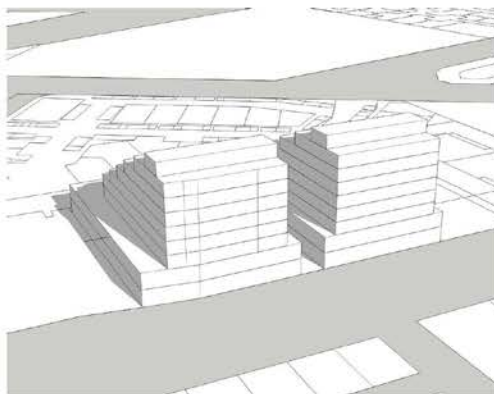
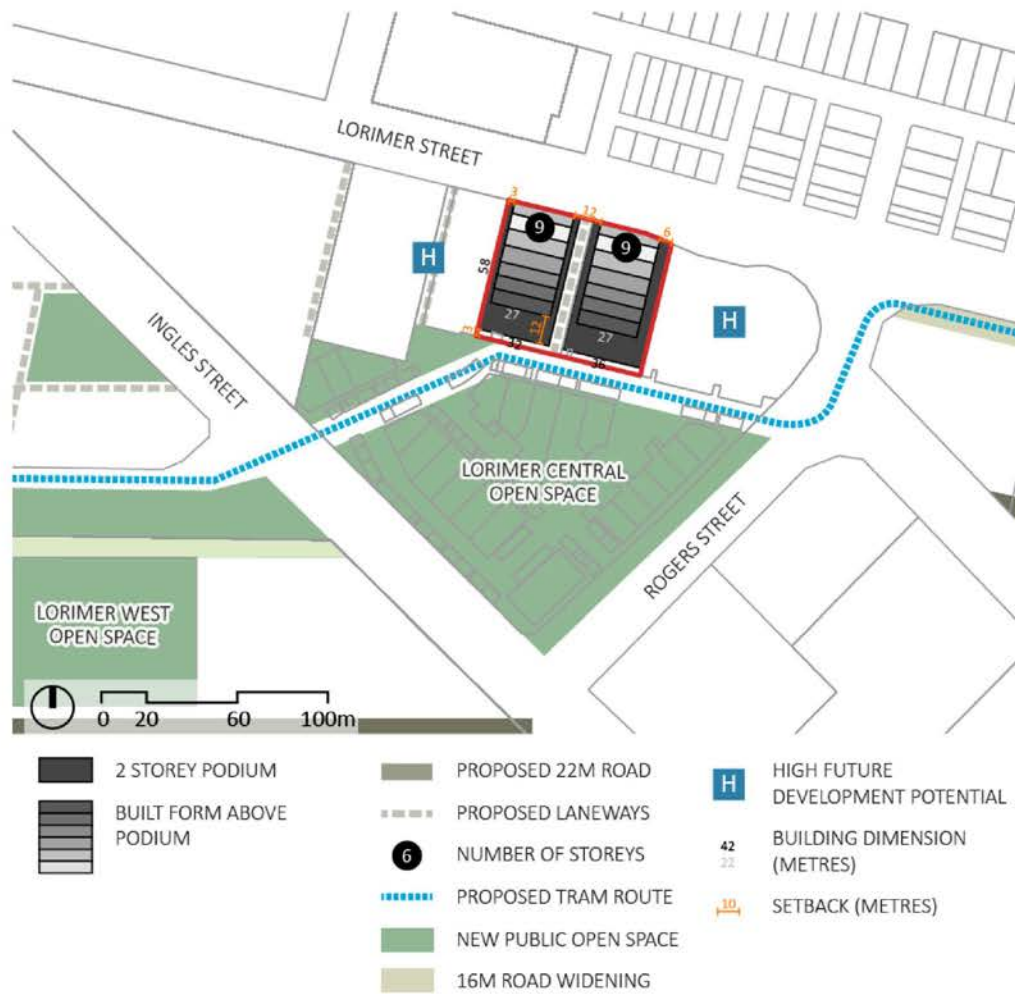
Shadows as on 22nd September at 12:00pm

**870 LORIMER STREET, PORT MELBOURNE**



Shadows as on 22nd June at 12:00pm

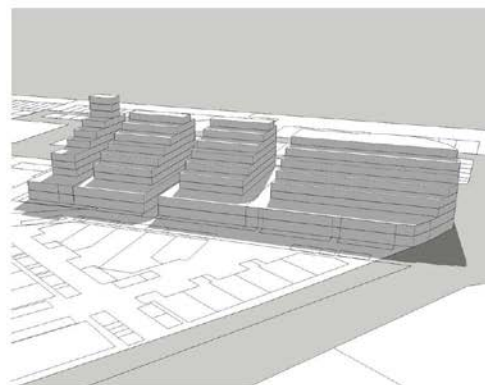
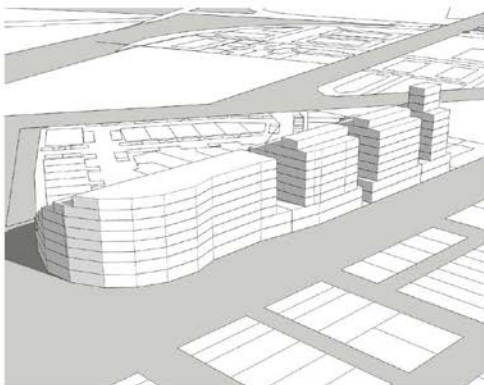
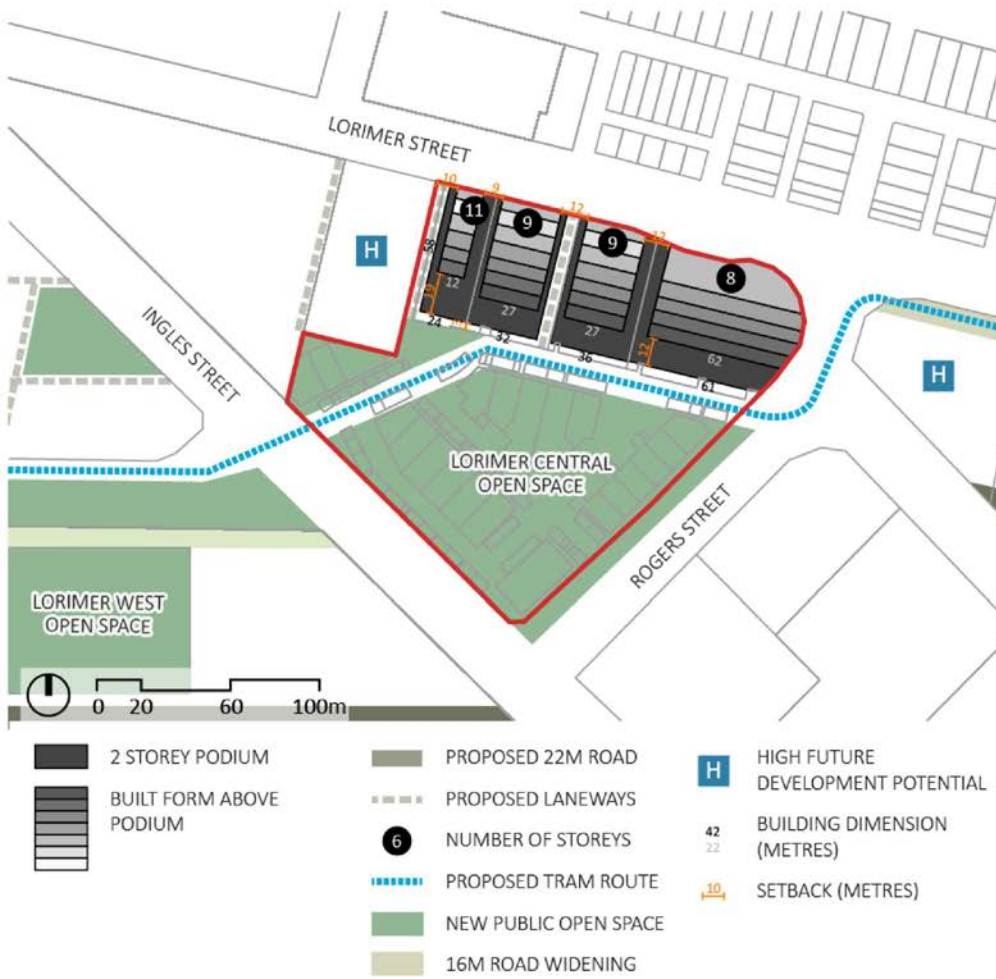
**880 & 884 LORIMER STREET, PORT MELBOURNE**



Shadows as on 22nd June at 12:00pm



**LORIMER STREET OWNERS CORPORATION, PORT MELBOURNE**



Shadows as on 22nd June at 12:00pm