



Visit the SFB  
Program Website for  
more information



# Strategic Fuel Breaks

## What are Strategic Fuel Breaks?

- An area up to 40 metres wide that could resemble open grassy woodland or heath lands
- A strip of land where vegetation has been permanently modified to reduce rate of spread and intensity of fire for the direct protection of assets and/or assist fire control
- The breaks will be regularly maintained by FFMVic, or other land managers

## What are the benefits of Strategic Fuel Breaks?

- ✔ Provide increased protection to communities, environment and assets
- ✔ Improve access and egress of firefighting resources contributing towards suppression effectiveness and efficiency
- ✔ Enable firefighters to move seamlessly to undertake backburning operations to contain the spread of fires before they reach communities and assets.
- ✔ Support jobs and economic recovery in regional areas
- ✔ Respond to more frequent, intense and damaging bushfires under a rapidly changing climate
- ✔ Reduce costs and damages as assessed in previous large-scale bushfire events

# Asset Protection Breaks

**“The last line of defence of the direct protection of communities and assets”**



## UNMANAGED EDGE



## ASSET PROTECTION BREAK

- ✔ Simple (constructed track)
- ✔ Hazardous trees removed
- ✔ Up to 50-70% canopy and stumps removed
- ✔ 40m modified zone
- ✔ Treated annually

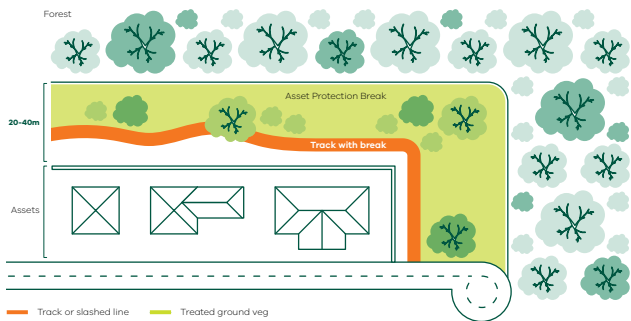


- Track or slashed line
- Treated ground veg
- Untreated ground veg
- Hazardous tree
- Retained trees

\*Hazardous trees beyond the break area that do not pose a risk to firefighter safety will be retained

Asset protection breaks are designed to protect communities and assets from the direct impacts of fire. These breaks are generally located adjacent to townships and assets.

Asset protection breaks reduce flame contact and radiation, support adjacent areas to be planned burnt, and enable fire agencies to move back into areas more quickly after the fire has passed.

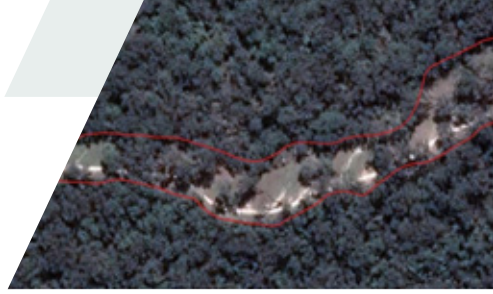


- Track or slashed line
- Treated ground veg

# Landscape Protection Breaks

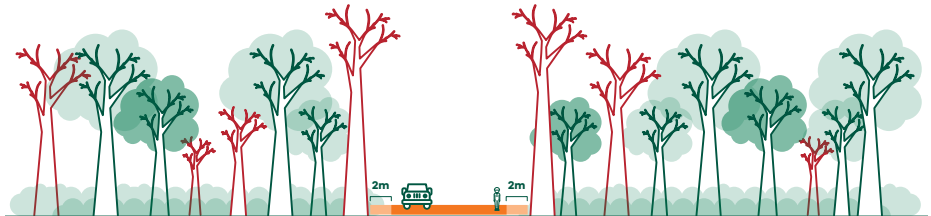
**“Maximizing effectiveness of fire prevention while maintaining minimal impacts to the environment”**

Landscape protection breaks are located in the forest to divide the landscape into units/areas suitable to help to reduce the fire to the smallest size possible. These breaks provide a platform for fighting fires in the forest and may also reduce fire impacts on nearby communities.

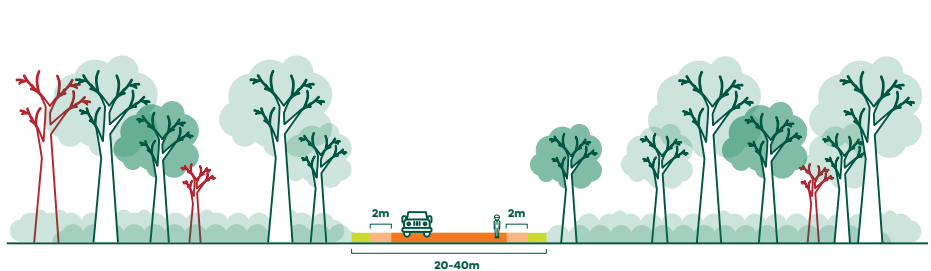


## LANDSCAPE PROTECTION BREAKS

Before Landscape Protection Break



After Landscape Protection Break



- Track - Road
- Verge
- Maintained ground veg
- Untreated ground veg
- Hazardous tree

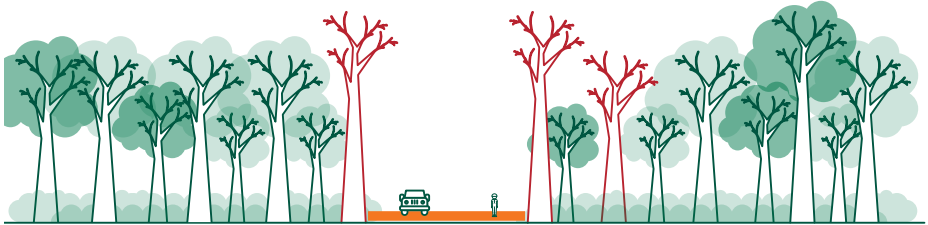
\*Diagram not to scale \*\*Hazardous trees beyond the break area that do not pose a risk to firefighter safety will be retained

# Regrowth – Stabilisation

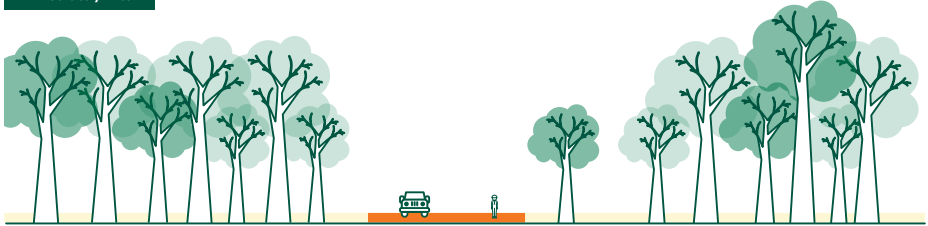
Once established, the breaks will be regularly maintained by FFMVic to resemble a healthy open woodland.

## REGROWTH – STABILISATION

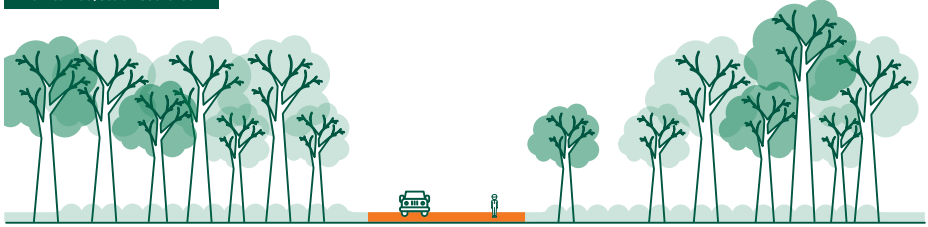
Before



Immediately After



Maintained/stabilised break



— Track - Road    🌳 Hazardous tree

