

Department of Environment,

Land, Water and Planning,

21/5/2020

Review of Goulburn to Murray River flows

We believe the social aspects of the Lower Goulburn river is not receiving sufficient attention in the review of the Goulburn River summer flows currently being undertaken.

Having had a lifelong association with the Goulburn River including living and owning a number of properties adjacent to this river, loss of public access during summer months has become a concern for us and our Goulburn Valley communities.

Over past decades, but especially more recently, summer flow rates have increased to up to 3000 mL per day, up from historic flows traditionally around 500 mL or under.

These increased water flows have overwhelmed the Lower Goulburn completely inundating sandbars that have provided river access to communities, both indigenous and post settlement.

Personally we have fond memories of indigenous families enjoying the numerous sandbars in the Shepparton and Mooroopna area and more recently the pleasure of introducing our grandchildren to the river.

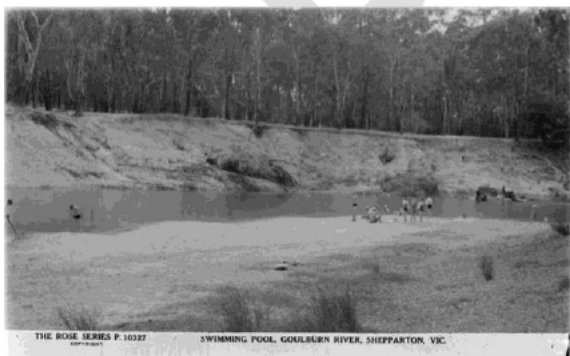
The social impacts being experienced by communities along the Lower Goulburn should be taken fully into account in the Goulburn to Murray River flows review.

The photos below show a range from early settlement to more recent times, however these fail to capture the use and dependence by indigenous families over millenniums.

The Goulburn River was declared a heritage river in 1992, we urge you to fully consider this heritage in relation to past, present and future generations.

Thank you for your time and efforts,

John & Robin Pettigrew



Goulburn River, Bunbartha, Dec 2018