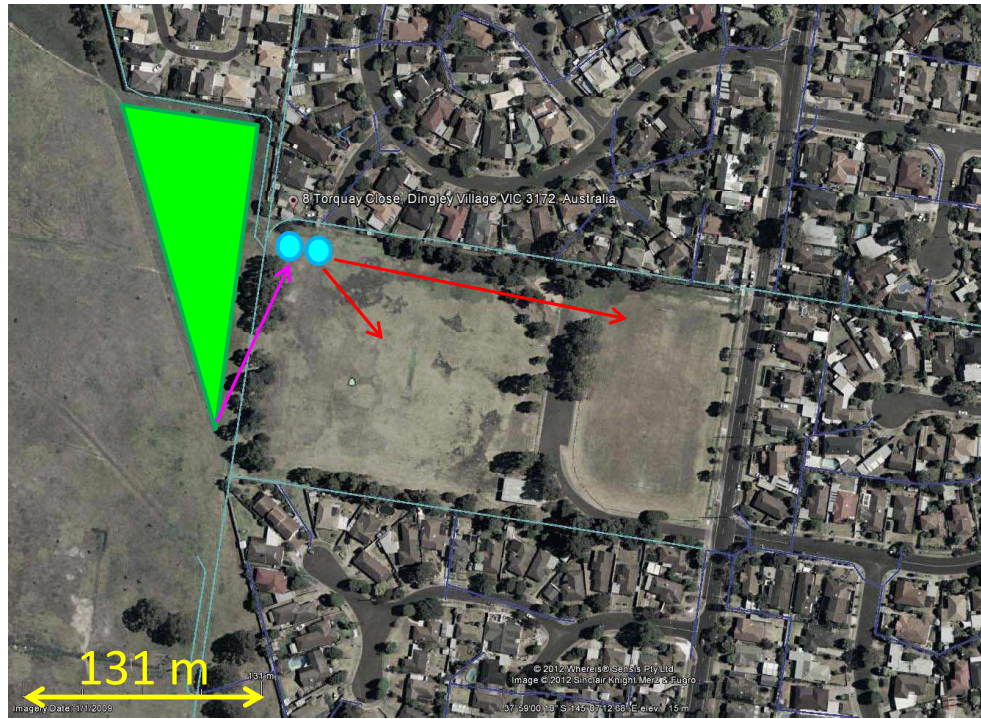


Catchment	Mordialloc Creek
Diversion type	Gravity
Treatment type	Wetland
Storage type	Above
Funder	Council/ MWC
Total catchment area	163 ha
Reuse demand	10 ML/yr
Catchment % impervious	49%
Upstream systems	-
Downstream systems	80RE002, 80RP009



## Costs and benefits

Capital cost (millions)	\$1.3
Potable water saving	8 ML/yr
Volume water treated	110 ML/yr
SS reduction	39,000 kg/yr
TP reduction	63 kg/yr
TN reduction	250 kg/yr
Reuse Ratio	\$6.1/kL
TN Ratio	\$210/kg
Project Comparison Factor	10.2
% reduction achieved for catchment:	
SS	47%
TP	37%
TN	21%

### Description

Low flows diverted from main drain near the south end of Albert Place to a wetland in the north west corner of Chadwick Reserve. Diverted flows will pass through a GPT before entering the wetland. The wetland footprint will be 7,000 m<sup>2</sup> with an area at "normal water level" of 4,900 m<sup>2</sup>. Treated water will be used to irrigate the two ovals at Chadwick Reserve (demand of 10 ML/yr). Treated flows will be pumped to above ground storage. The optimal tank volume is 400 kL.

### Benefits

- Irrigate valuable sporting reserve

### Further investigations

- Survey to confirm feasibility of gravity diversion
- Confirm feasibility of diversion, wetland and storage construction

**80RP001: Chadwick Reserve harvesting**

Kingston Council  
Prioritisation Project – regional opportunities

