

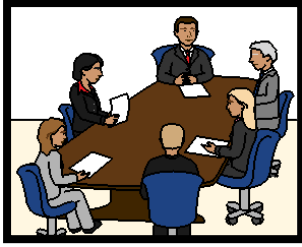
There will be a
Royal Commission.
It starts this year.



It is about Mental Illness.



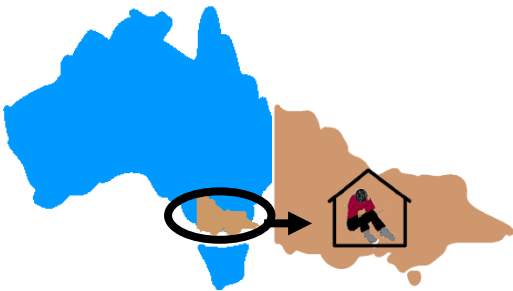
The Victorian Government says we **must** listen to people with mental illness.



What is a Royal commission?

It is a big look at something.

We will call it a big study.



This big study is about Mental Health services in Victoria.



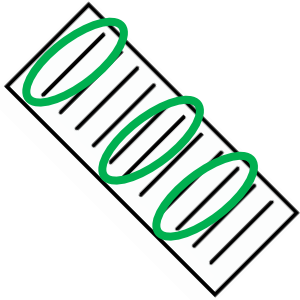
The Victorian Government said we need to do this big study.



The name of this big study is the Royal Commission in to Mental Health services in Victoria.



Before the big study starts



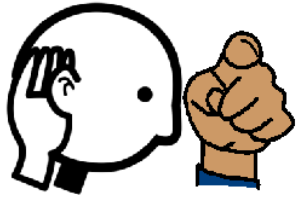
There are lots of things to talk about
in a big study.

We need to know the most important things.



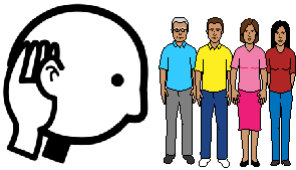
The government met lots of people.

Lots and lots and lots of people told the
government their story.



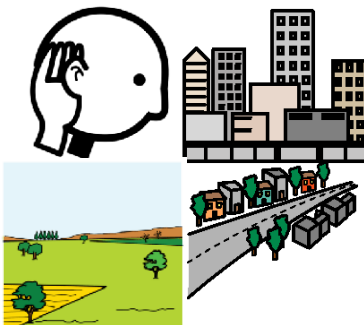
The government listened to

- people that live with a mental illness
- families
- carers
- groups who speak up for people that live with a mental illness
- groups that support you.



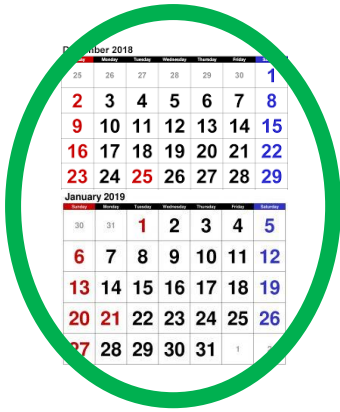
They also listened to

- staff who work with you
- mental health services
- people who study mental health.



The government listened to people that live

- in the country
- in the city.

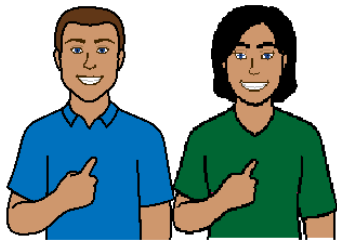


They did this in

- December 2018

and

- January 2019.



Can you tell your story?



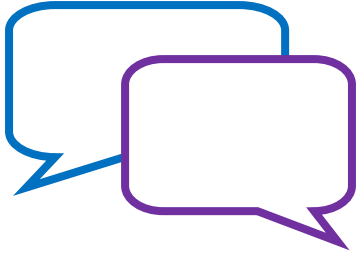
The big study will ask for more information.

More people will be able to tell their story.



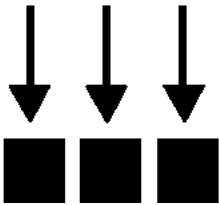
Get more information.

Read how to do this on page 21.



What people said about this big study?

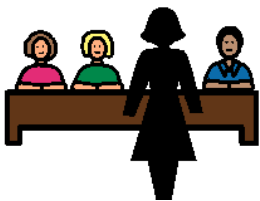
People said



We can find out how to make the services work

- for all of us

and

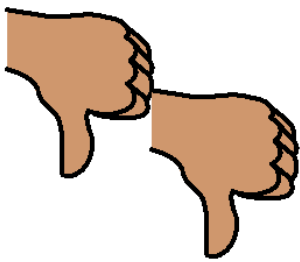


- teach people about mental illness.



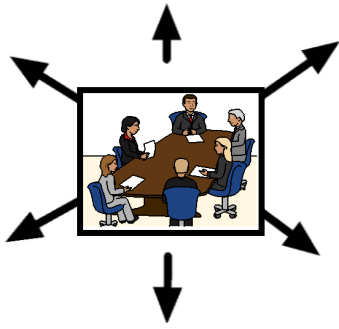
Some things are good

But



Lots of things are **not** good. Like

- a long time to wait for help
- services do **not** help some people
- there is **no** choice about the service you can get.



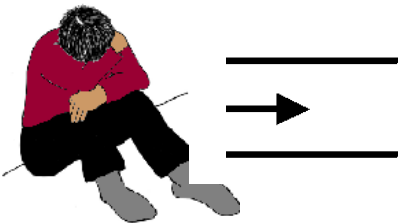
What people want this big study to look at?

People said.



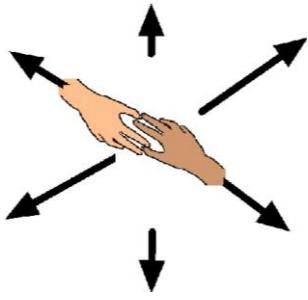
The most important things to look at are

- how to prevent mental illness



- what to do at the start of your mental illness.

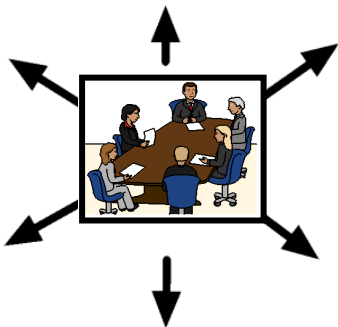
People told us these are different things.



People said there are other important things.

The big study needs to look at how to

- find services
- use services
- make services better
- make it clear what different places do.



People told us there are more things to look at.

Here is a list of more things the big study must look at. Like

000

1. How do I find a service **now**?

It is an emergency. Like I am **not** well.



2. How do we make sure people

do **not** feel cut off

- from other people
- from your community.



3. People need to know more about

- feeling depressed
- worry
- shock.



4. What links are there between

- alcohol
 - other drugs
- and**
- mental health services?





What links are there between

- mental health

and

- a house to live in

or

- people with other disabilities?



5. What services are there for

- Aboriginal people
- people from different cultures?



6. What services are there for

- lesbian or gay people
- bisexual people
- transgender people
- intersex people
- queer people?

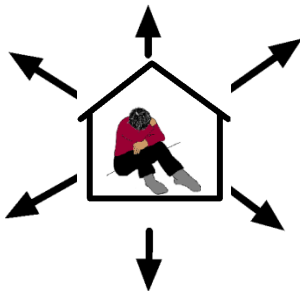


7. What services are there for

- homeless people



- refugees
- asylum seekers?



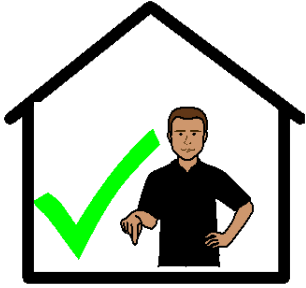
8. Are there the right services in your community?

Like services

- near where you live
- in the country areas of Victoria
- for children
- for teenagers and young people.



9. Do we have really really good services for all of us? Services need to work for all of us.



10. Can people find the right service for them.

Like when they

- are a child
- are older
- are **not** well
- are really **not** well.



11. How do people know a service is safe.

And

The treatment will help them get better.



12. Do services know about person

centred care? It means you say what is the best way to get well.

The service listens to what you say.



13. Do we use the most up to date treatment?

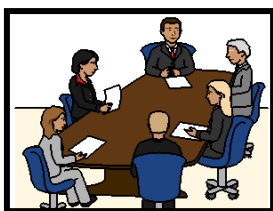


14. Staff need to come from all parts of our community. Like staff

- from different cultures
- and**
- with different things they have done.



15. The community needs to know more about mental illness.

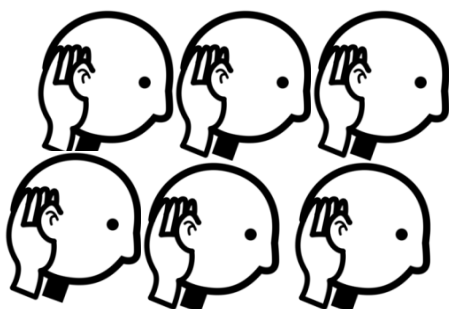


What do people want this big study to do?



Link mental illness services to other services.

The services work together to help all of us.



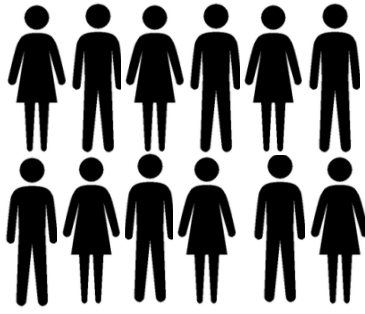
The big study hears lots of different stories.



People tell the big study about what is

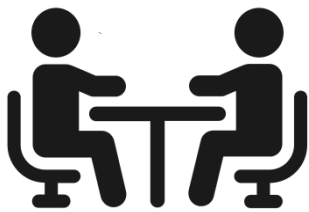
- good
- **not** good.

You listen to our ideas for change.



Other people can also tell their story. Like

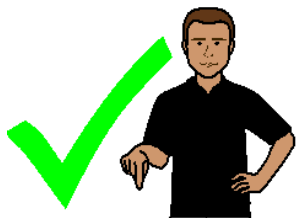
- family
- carers
- workers in the community
- workers in the services.



Some one needs help.

The person only has to tell 1 service.

They will tell all that persons other services.



More people can

- find a service
- when they need it.

It is the right service for them.



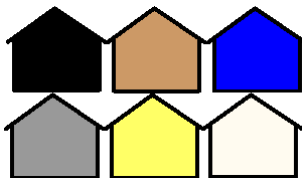
People feel safe



People know their rights.

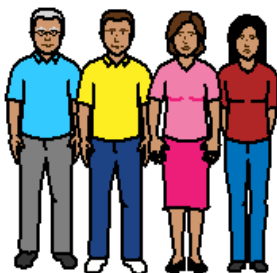
And

Services respect their rights.



There are more services.

There are different kinds of services.



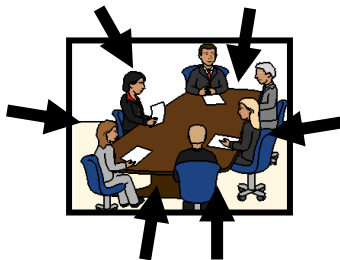
There are staff from different parts
of the community.



People get the right treatment.



People in the community know more about mental illness.



People with a mental illness are part of

- this big study

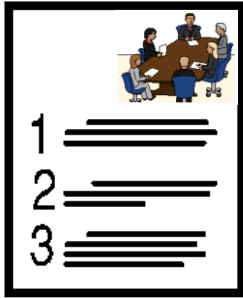
and



- in our community.



Where to next?



All this information helps plan the big study.



You can get the Terms of Reference now.



More information



This big study has a website.

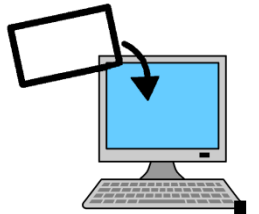
www.rcvmhs.gov.au

or



Call 1800 00 11 34

or



Email

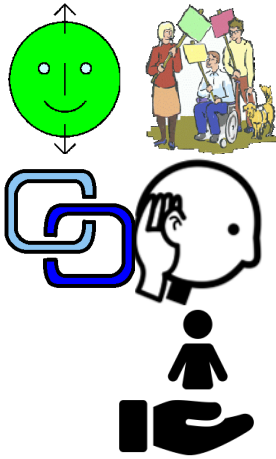


Go to <https://rcvmhs.vic.gov.au>

Click on **Contact us**.

Images

We have used images from



- COMPIC
- Inspired Services
- Mayer-Johnson
- Picto- Selector
- The Noun Project.



<https://www.dreamstime.com/australia-victoria-melbourne-parliament-vic-november-collonaded-house-located-east-image140130595>



This booklet is based on the
Consultation summary. Terms of Reference for
the Royal Commission into Mental Health
February 2019



Access Easy English wrote the Easy English.

March 2019.