



ARIELLA ESTATE

Henley Brook

**Into
Place**
.

INTELLIGENT DESIGN. DISTINCTIVE PLACES



Ariella Estate, Henley Brook. Where Life Comes Together.

Exclusive single storey residences in vibrant new community designed for the way you want to live.

Tucked between the rolling vineyards of the Swan Valley and the expansive parklands of Whiteman Park, Ariella Private Estate strikes the perfect lifestyle balance - room to grow with all the connections of modern life, just 25 minutes from Perth CBD.

Whether you're starting out, growing your family, or simplifying your lifestyle, Ariella is a place designed to evolve with you. With green spaces, walking trails, future schools, and local shops nearby, everything you need is perfectly placed.

With a strong sense of community and a peaceful, family-friendly atmosphere, you'll feel at home from the moment you arrive.

With limited packages available and land in high demand, these premium packages won't last.



Get in touch to secure your preferred package, today.

Darren Coussens
0456 155 848
darren@intoplace.com.au



Community-focused estate with long-term liveability in mind.

Lifestyle

- Moments from Swan Valley wineries, breweries, and fresh local produce.
- Landscaped parks, wetlands, and walking trails throughout the community.

Surroundings

- Peaceful, low-traffic streets perfect for kids and evening walks.
- Enjoy weekend picnics and bike rides in nearby Whiteman Park.
- Easy access to medical centres and fitness facilities.

Shop

- Local shopping centres just minutes away (incl. Brabham Shopping Centre)
- Explore weekend farmers markets, chocolate factories, and gourmet eateries.

Access

- 27kms from the CBD.
- Under 20 mins to the Swan Valley.
- Future Whiteman Park METRONET station just minutes away.
- Direct links to Perth CBD via Tonkin Highway and Drumpellier Drive.
- Close to the new Henley Brook bus station.

Learn

- Easy access to childcare, early learning centres, and high schools nearby.
- Future public primary school within the estate.
- Close to established schools like Ellenbrook Secondary College and St Helena's Catholic Primary.

Dining

- Minutes from the heart of Swan Valley's food and wine region.
- Surrounded by cafés, restaurants, and family-friendly pubs.

An aerial photograph of a modern residential property. The house features a light-colored stucco exterior and a large arched window with white curtains. A balcony with a terrazzo floor and a metal railing runs along the side of the house. The garden below is filled with various green plants and shrubs. The text is overlaid on a semi-transparent dark blue rectangle in the lower-left corner.

Beautiful functionality.

At Into Place, we lead with
design in everything we do.

Our elevations have been
architecturally designed and
thoughtfully crafted to embrace
the environment around them.

Into Place.

@ Ariella Estate, Henley Brook.

Sustainability matters.

Sustainability is a key driver in every Into Place residence. That's why every home we build is complete with a carefully considered selection of conscious inclusions that don't cost the earth.

- Solar Power Photovoltaic (PV) Systems
- Electric Vehicle Charging Cabling Provision
- Heat Pump Hot Water System
- 3-Phase Power Run-in
- Trees Planted in Conservation Sanctuaries





FROM \$771,900*

178.05m² 359m² 6x30m

This modern two-storey design offers a thoughtful blend of style and functionality.

KEY FEATURES

- Double brick construction
- Independently certified structural engineering
- 28c ceilings with coved cornices
- All-electric Smeg appliances
- Vitrified stone bench tops
- LED downlights
- Internal wall painting
- Floor coverings throughout
- Ceramic floor and wall tiles
- Window treatments throughout
- Solar Power Photovoltaic (PV) Systems
- Electric Vehicle Charging Cabling Provision
- Heat Pump Hot Water System + more.



Want to know more? Chat to Darren today.

Darren Coussens
0456 155 848
darren@intoplace.com.au

LOT 1

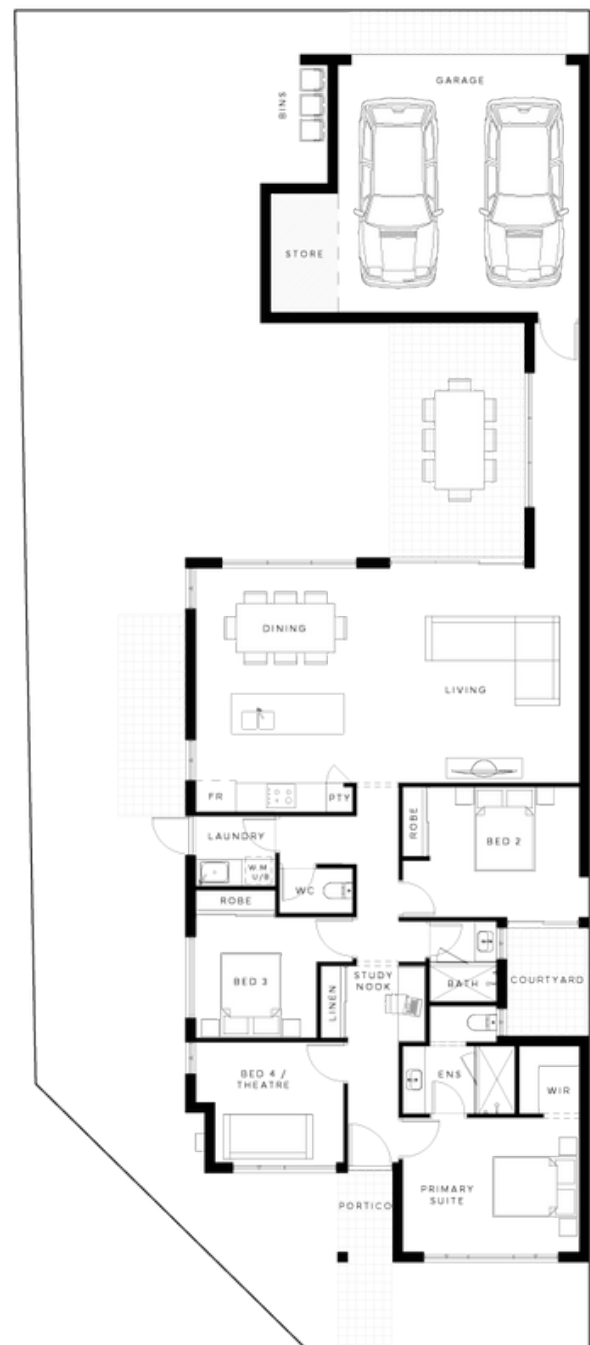
HENLEY STREET,
HENLEY BROOK

3-4

2

1-2

2



Images in this brochure are for illustrative purposes only and may not represent the final product as shown. Into Place reserves to substitute the make, model or type of any products should the product become unavailable or due to a change of supplier. All furniture, screens, landscaping and decorative finishes are not offered by Into Place. Additional cost floor plan options, fixtures and fittings may also be shown. Into Place is not the owner of the land. The land featured in this package is advertised by agreement between Into Place and the land developer and/or vendor. The land is not purchased from Into Place but from the land developer/landowner or an authorised agent. Into Place is not a reseller of land but a new home builder. The land price component does not include transfer duty, settlement costs and any other fees or disbursements associated with the settlement of the land. Land and building will form separate contracts. Price includes a provisional sum for siteworks which is indicative of the suburb in which the home is being proposed. This will only be fixed after receiving proper contour surveys and engineering details. Where a set price has been determined for Bushfire Attack Level (BAL), coastal requirements, noise attenuation requirements and / or covenants and guidelines, this will be included in the total price. Copyright © 2025 Lenticular Group Pty Ltd T/A Into Place. All rights reserved.

Into Place .



DESIGN LEAD, ALWAYS

We design distinctive, architecturally designed residences that incorporate the latest trends and materials.



MASTERFULLY CRAFTED

Each residence we deliver includes considered inclusions and is built with the highest construction standards.



CLIENTS AT THE CORE

Our smaller volume of quality residences means a personalised experience and our clients never become just a job number.



SUSTAINABILITY MATTERS

Every residence we handover contributes to the restoration Conservation Sanctuaries across Australia.

intoplace.com.au