



# More Into Every Place.

**Into  
Place**  
.

TIMELESS INCLUSIONS





# Where everything falls into place.

Welcome to Into Place. A design-focused property group, bringing a new calibre of two storey residence to the streets of Perth.

Our focus is creating great places to live that enhance the neighbourhoods they are a part of.

We're committed to good design. Our residences are architecturally designed to incorporate the latest in design trends, materials and sustainable inclusions.

As a family business, we are proud of our ability to deliver a personalised client experience. Our smaller volume of quality residences means our clients never become just a job number, they become a part of our community.

Our design-led approach is delivered through quality construction and craftsmanship. We work closely with several hand selected Building partners who have been delivering award winning homes for decades.

**Into Place.**





---

INTELLIGENT DESIGN. DISTINCTIVE PLACES

---



DESIGN LEAD,  
ALWAYS

We craft distinctive, architecturally designed residences that incorporate the latest trends and materials.



MASTERFULLY  
CRAFTED

Each residence we deliver includes considered inclusions and is built with the highest construction standards.



CLIENTS AT  
THE CORE

Our smaller volume of quality residences means a personalised experience and our clients never become just a job number.



SUSTAINABILITY  
MATTERS

Every residence we handover contributes to the restoration Conservation Sanctuaries across Australia.

**Into Place.**





# Lasting Partnerships.

With Into Place, lasting quality and innovation is built in.

We partner with leading suppliers who share our commitment to pushing the boundaries of design and striving for a more sustainable future.

From cutting-edge European appliances and timeless vitrified stone bench tops to the practicality of ceramic tiles and quality floor coverings, every finish is selected with quality and elegance in mind.



Images are for illustrative purposes only and may not represent the final product as shown. Into Place reserves to substitute the make, model or type of any products should the product become unavailable or due to a change of supplier. All furniture, screens, landscaping and decorative finishes are not offered by Into Place. Additional cost fixtures and fittings may also be shown.

**Into Place.**





# Quality Construction.

Our design-led approach is delivered through quality construction and craftsmanship.

We work closely with hand selected building partners who have been delivering quality homes across Perth for decades and have loyal trades committed to delivering exceptional quality, always.

Together, we hand over homes that stand the test of time. Crafted in enduring double brick as standard, our architecturally designed residences are a testament to quality and durability.

And we ensure it - with every home independently certified by a structural engineer for peace of mind.

## The Difference in the Detail

- ✓ Double Brick Home
- ✓ Architecturally Designed
- ✓ Meticulous Construction
- ✓ Independently Certified Structural Engineering

**Into Place.**





# 01

## Living.

Our living areas are designed for comfort. High ceilings enhance the sense of space and grandeur, while quality insulation helps maintain energy-efficiency year-round. Built-in robes offer smart storage solutions and plush carpets in the bedrooms provide a layer of warmth.

Images are for illustrative purposes only and may not represent the final product as shown. Into Place reserves to substitute the make, model or type of any products should the product become unavailable or due to a change of supplier. All furniture, screens, landscaping and decorative finishes are not offered by Into Place. Additional cost fixtures and fittings may also be shown.

**Into Place.**





# Living.

## Key Inclusions

- ✓ 28c Plasterboard Ceiling with 75mm Coved Cornice (Single Storey)  
31c to Ground Floor and 28c to First Floor (Two Storey)
- ✓ Hardwall Plastering (Float and Set)  
Internal Wall Finish
- ✓ R4.1 Batt Insulation to First Floor  
Ceilings (where applicable)
- ✓ Powder Coated Aluminium Balustrade  
to Stairs and Balcony (where applicable)
- ✓ Painting to all Walls, Ceilings, Doors &  
Door Frames
- ✓ Built in Wardrobes to Bedrooms with  
Mirrored Sliding Robe Doors (where  
applicable)
- ✓ Built in Linen Cupboard with 4 x Shelves
- ✓ Timber look Luxury Vinyl Plank Flooring  
Main Living Areas (where applicable)
- ✓ Carpet with Underlay to Bedrooms,  
Robes and Stairs (if applicable)

Images are for illustrative purposes only and may not represent the final product as shown. Into Place reserves to substitute the make, model or type of any products should the product become unavailable or due to a change of supplier. All furniture, screens, landscaping and decorative finishes are not offered by Into Place. Additional cost fixtures and fittings may also be shown.

**Into Place.**





# 02

## Kitchens.

Our kitchen are thoughtfully curated for timeless appeal. From the elevated clad rangehood and durable bench tops to the sleek, energy-efficient appliances, every detail is chosen to enhance style and functionality. Soft-close cabinetry and premium finishes ensure a lasting impression, while sustainable materials ensure your kitchen is as enduring as it is beautiful.


Images are for illustrative purposes only and may not represent the final product as shown. Into Place reserves to substitute the make, model or type of any products should the product become unavailable or due to a change of supplier. All furniture, screens, landscaping and decorative finishes are not offered by Into Place. Additional cost fixtures and fittings may also be shown.

**Into Place.**








# Kitchen.



CHOICE OF COLOURS

  
CHROME

  
BLACK

  
BRUSHED  
NICKEL



20mm Vitrified Stone Bench top



Soft Close Laminate Cabinetry with Finger Grips



Double Bowl Undermount Sink



Round Pin Sink Mixer



600mm Smeg Thermoseal Under Bench Oven



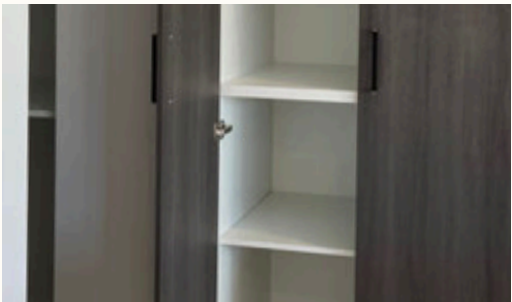
600mm Smeg Induction Cooktop



600mm Undermount Rangehood with Laminate Surround (Curved or Straight)



600 x 300mm Ceramic Wall Tiles to Underside of Rangehood



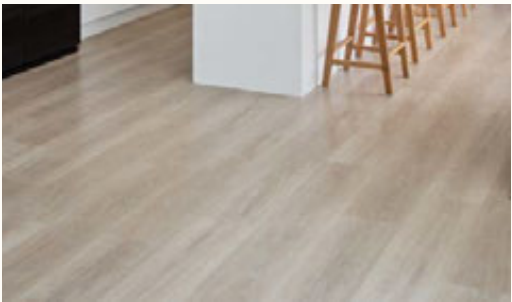
Laminated Pantry with 4 Shelves



Dishwasher Recess with Cold Plumbing and Power Provisions



Microwave Recess



Timber look Luxury Vinyl Plank Flooring (Including Scotia) to Main Living Areas (where applicable)

Images are for illustrative purposes only and may not represent the final product as shown. Into Place reserves to substitute the make, model or type of any products should the product become unavailable or due to a change of supplier. All furniture, screens, landscaping and decorative finishes are not offered by Into Place. Additional cost fixtures and fittings may also be shown.



# 03

## Wet Areas.

Good design doesn't stop in our functional spaces. Elegant ceramic floor and wall tiles, quality tapware and laminate vanities all chosen for durability and aesthetic appeal, are designed to elevate every day living.

Images are for illustrative purposes only and may not represent the final product as shown. Into Place reserves to substitute the make, model or type of any products should the product become unavailable or due to a change of supplier. All furniture, screens, landscaping and decorative finishes are not offered by Into Place. Additional cost fixtures and fittings may also be shown.

**Into Place.**



# Bathroom + WC.



20mm Vitrified Stone Bench top



Soft Close Laminate Cabinetry with Finger Grips



Inset Basin with 40mm Pop-Up Plug & Waste



Basin Mixer Tapware



Frameless Mirror to Full Width of Vanity



Adjustable Height Rail Shower



Semi-Frameless Shower Screen with Pivot Door



Tiled Insert Channel Grate



1525mm Built in Acrylic Bath (if applicable)



Shower/ Bath Wall Mixer (if applicable)



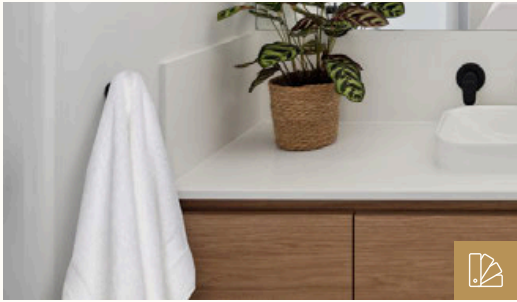
Bath Spout & Mixer (if applicable))



Wall Hung Basin with 40mm Bottle Trap to WC (if applicable)



Rimless Wall Faced Toilet Suite



Towel Rails, Toilet Roll and Soap Holders



600 x 300mm Ceramic Floor and Wall Tiles (where applicable) Recessed Hobs to Vanity

Images are for illustrative purposes only and may not represent the final product as shown. Into Place reserves to substitute the make, model or type of any products should the product become unavailable or due to a change of supplier. All furniture, screens, landscaping and decorative finishes are not offered by Into Place. Additional cost fixtures and fittings may also be shown.

**Into Place.**



# Laundry.



CHOICE OF COLOURS



CHROME



BLACK



BRUSHED  
NICKEL



20mm Vitrified Stone Bench Top



Soft Close Laminate Cabinetry with  
Finger Grips



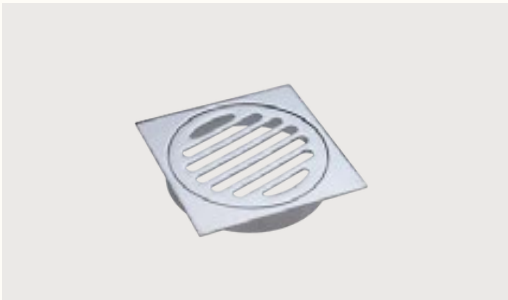
45L Inset Laundry Trough



Round Pin Sink Mixer



Chrome Washing Machine Tap Set



Chrome Floor Waste

Images are for illustrative purposes only and may not represent the final product as shown. Into Place reserves to substitute the make, model or type of any products should the product become unavailable or due to a change of supplier. All furniture, screens, landscaping and decorative finishes are not offered by Into Place. Additional cost fixtures and fittings may also be shown.

**Into Place.**





# 04

## Doors + Windows.

Timeless design meets modern functionality with our curated selection of sleek handles in a range of contemporary colours, quality sliding doors that invite seamless indoor-outdoor connection and our signature Into Place half moon door handle to stand out from the crowd.

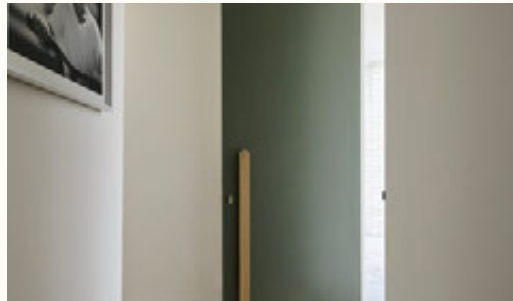
Images are for illustrative purposes only and may not represent the final product as shown. Into Place reserves the right to substitute the make, model or type of any products should the product become unavailable or due to a change of supplier. All furniture, screens, landscaping and decorative finishes are not offered by Into Place. Additional cost fixtures and fittings may also be shown.

**Into Place.**





# Doors + Windows.



25c x 820mm Flush Panel Solid Core Entry Door



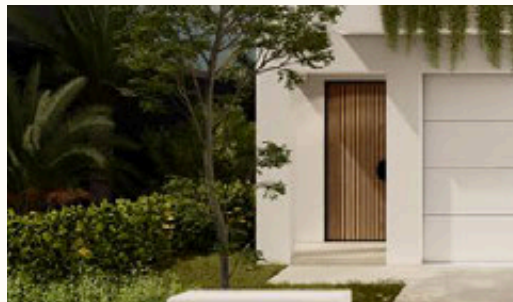
Double Rebated Door Frame



Feature Half Moon Pull Handle with Lockset



25c Flush Panel Internal Doors



25c Modular Metal Door Frames Throughout



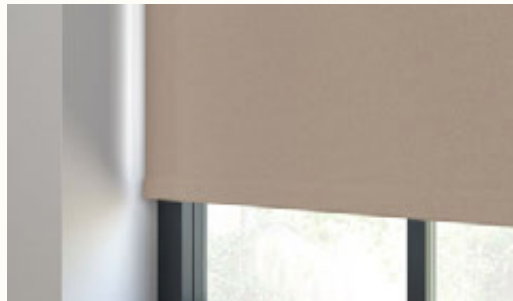
Lever Door Furniture Including Privacy Locks to Bathroom, Ensuite and WC



25c Flush Panel Solid Core Door to Garage



Powder Coated Aluminium Windows and Sliding Doors with Flyscreens



Roller Blinds Throughout (excluding wet areas)



Remote Sectional Garage Door

Images are for illustrative purposes only and may not represent the final product as shown. Into Place reserves to substitute the make, model or type of any products should the product become unavailable or due to a change of supplier. All furniture, screens, landscaping and decorative finishes are not offered by Into Place. Additional cost fixtures and fittings may also be shown.

**Into Place.**





# 05

## Electrical.

Built into each home are a premium selection of electrical selections that enhance the everyday. LED downlights, NBN provisions and powerpoints keep you seamlessly connected for work and entertainment.

Images are for illustrative purposes only and may not represent the final product as shown. Into Place reserves to substitute the make, model or type of any products should the product become unavailable or due to a change of supplier. All furniture, screens, landscaping and decorative finishes are not offered by Into Place. Additional cost fixtures and fittings may also be shown.

**Into Place.**





# Electrical.

## Key Inclusions

- ✓ 2 x Split Systems Air Conditioners
- ✓ LED downlights in your chosen locations
- ✓ Iconic light switches
- ✓ Double power points throughout (where applicable)
- ✓ NBN Co Ready Communications Package
- ✓ Digital TV Antenna (Free To Air TV)
- ✓ Hardwired Interlinked Smoke Detectors
- ✓ Externally Flued Extraction Fan to Bathroom, Ensuite & WC
- ✓ Double Fluorescent Light to Garage

Images are for illustrative purposes only and may not represent the final product as shown. Into Place reserves to substitute the make, model or type of any products should the product become unavailable or due to a change of supplier. All furniture, screens, landscaping and decorative finishes are not offered by Into Place. Additional cost fixtures and fittings may also be shown.

**Into Place.**





# 06

## Sustainability.

Leading the way in sustainable inclusions, we're committed to reducing our environmental impact and creating a more sustainable future.

Images are for illustrative purposes only and may not represent the final product as shown. Into Place reserves to substitute the make, model or type of any products should the product become unavailable or due to a change of supplier. All furniture, screens, landscaping and decorative finishes are not offered by Into Place. Additional cost fixtures and fittings may also be shown.

**Into Place.**





# Sustainability Matters.

Sustainability is a key aspect of responsible design and a key driver in every Into Place residence.

We're committed to reducing our environmental impact and creating a more sustainable future.

We include all-electric appliances, solar panels and EV charging provisions at no extra cost, because creating a healthier environment for you and your family shouldn't cost the earth.

## Key Benefits

- ✓ Reduce greenhouse gas emissions.
- ✓ Reduce energy bills.
- ✓ Never receive a gas bill again.
- ✓ Enjoy a healthier home.
- ✓ Improve the value of your home.

Images are for illustrative purposes only and may not represent the final product as shown. Into Place reserves to substitute the make, model or type of any products should the product become unavailable or due to a change of supplier. All furniture, screens, landscaping and decorative finishes are not offered by Into Place. Additional cost fixtures and fittings may also be shown.

**Into Place.**



# Sustainability as standard.

## 3.3kW Solar Power Photovoltaic (PV) System

High grade solar panels that harness the sun's unlimited free energy.

- Lower power bills.
- Reduce financial impact of future rises in energy costs.
- Add value to your home.

## Heat Pump Hot Water System

Renewable energy water heating technology.

- Reduce home energy costs.
- Reduce energy consumption and cost of living.
- Provides plentiful supply of hot water day and night in all weather conditions.
- Reliable hot water is always on tap, regardless of the weather.
- 69%\* cheaper to run than gas electric water heaters systems.

## 3-Phase Power Run-In

Increased capacity, enabling your household to run smoothly.

- Extra voltage allows multiple appliances to run simultaneously.
- Run power-hungry household appliances without going over maximum capacity.
- Enables fast electric vehicle charging.

## Electric Vehicle Charging Cabling Provision

The future of vehicles, helping to combat climate change.

- Zero tailpipe emissions.
- More energy-efficient, converting more energy into actual movement.
- Reduces air pollution.
- Lowers fuel costs.
- Reduces maintenance expenses.
- Government incentives such as tax credits/ rebates.

## 2 x Split Systems Air Conditioners

Efficient heating and cooling.

- Uses less energy compared to traditional heating methods.
- Reduces greenhouse gas emissions.
- Split functionality eliminates the need for separate heating and cooling appliances.
- Long lifespan and reliability contribute to cost savings over time.

**Into Place.**





# Trees for Homes.

Furthering this commitment to reduce our environmental impact, we partner with Reforest on our Trees for Homes initiative.

Each Into Place home we hand over contributes to the restoration of habitats around the average size of a detached home in Australia, and offsets around the same amount of CO2 as travelling around the country 1.5 times!



**Reforest**

**Into Place.**



SUSTAINABLE PARTNERSHIPS



For Smeg, responsible design and technology come together, resulting in a range of quality appliances designed to last. Beyond their product innovation, they ensure over 70% of their energy consumption comes from renewable sources, and products utilise eco-friendly materials and packaging. It's this commitment to excellence that makes them among the most trusted appliances brands.



Stone Ambassador is redefining sustainable surface design in Australia with the introduction of the Zenith Surfaces 0% crystalline silica range. Composed of up to 89% recycled glass, Zenith transcends conventional limitations, boasting exceptional strength, durability, scratch resistance, and heat resistance.



Polytec champions sustainability with initiatives like the reDirect Wood Recycling program, reducing waste and conserving resources. The company has installed over 53,000 solar panels nationwide, including Australia's largest rooftop solar system. Certified under the Australian Forestry Standard and PEFC, Polytec ensures its wood is sustainably sourced. These efforts reflect a strong commitment to eco-friendly manufacturing.



Carpet Call promotes eco-friendly flooring offering options made from renewable materials like wool and sustainably sourced timber. With tough materials and quality manufacturing, their products are intended to last the test of time, in turn, reducing the impact on the environmental.



Laminex supports sustainability through local manufacturing, ensuring quality and resource efficiency. They focus on reducing carbon footprints, minimising waste, and using ethically sourced materials. Certifications like Global GreenTag and Australian Forestry Standard highlight their commitment.



COLORBOND® steel supports sustainability through the use of recycled materials and its 100% recyclability. Its Thermatech® technology helps reduce energy costs by reflecting more heat, keeping homes cooler. The steel's durability in harsh climates also reduces the need for frequent replacements, conserving resources.





# 07

## Structural + Exterior.

Our residences are built on strong foundations from lasting, quality materials.

**Into Place.**





# Exterior + Structural.

## External Essentials

- Double Brick External Walls
- Brushed Concrete Garage Hardstand
- 2c Brickwork with Acrylic Texture Coat Finish to Front Elevation (as shown on plans)
- Timber Roof Frame With Treated Pine
- Colorbond® Steel Roof
- Colorbond® Slotted Gutters and Fascia
- Colorbond® Downpipes and Rain Heads (if applicable)
- Enclosed Garage with Plasterboard Ceilings (as shown on plan)
- Plasterboard Ceiling to Porch, Alfresco + Balcony (as shown on plan)
- 600 x 300mm Ceramic Floor Tiles (where applicable)
- Reticulation Sleeve for Landscaping Under Driveway
- Metal Meter Box
- 2 x External Garden Taps

## Structural + Engineering.

- ✓ Engineered Concrete Footings + Slab
- ✓ Engineered Concrete Suspended Slab + Stairs (if applicable)
- ✓ Termite Protection Treatment
- ✓ Independently Certified Structural Engineering
- ✓ Privately Certified Building Permit Application
- ✓ Energy Compliance Certification
- ✓ Feature Survey and Soil Classification
- ✓ Architecturally Designed Home
- ✓ 6 Month Maintenance Period

Images are for illustrative purposes only and may not represent the final product as shown. Into Place reserves to substitute the make, model or type of any products should the product become unavailable or due to a change of supplier. All furniture, screens, landscaping and decorative finishes are not offered by Into Place. Additional cost fixtures and fittings may also be shown.

**Into Place.**



# Into Place •



## DESIGN LEAD, ALWAYS

We craft distinctive, architecturally designed residences that incorporate the latest trends and materials.



## MASTERFULLY CRAFTED

Each residence we deliver includes considered inclusions and is built with the highest construction standards.



## CLIENTS AT THE CORE

Our smaller volume of quality residences means a personalised experience and our clients never become just a job number.



## SUSTAINABILITY MATTERS

Every residence we handover contributes to the restoration Conservation Sanctuaries across Australia.