



Nor'West Arc cycleway extension, street renewal and wastewater work



Today marks five months since we started work on the Nor'West Arc cycleway and wastewater upgrades. Our team have been making great progress along Wairakei and Aorangi Road.

In this newsletter, you'll find:

- A progress update
- Information of upcoming impacts in July
- Details about our next Project Update Drop-in Session
- What's happening on site?
- Business promotional deals

What does progress look like?

Our teams have been making steady progress across all work streams on Wairakei Road and Aorangri Road this month. Here's a snapshot of where things stand:

Wairakei Road and Aorangi Road South (Between Colwyn Street and Wairakei Road)

Highlights from the Past Month:

The team has ticked off several key milestones this month, with solid progress on underground services and road surface upgrades.

- All traffic signal foundations, access chambers, and ducting on the south side are now complete and awaiting the poles to be stood.
- Significant progress on stormwater with additional outdated pipelines renewed as part of the work.
- 40 metres of kerb and channel have been poured on the north side of the intersection, helping shape the final road layout.
- Another 400 metres of road surface has been prepped and asphalted, contributing to a smoother and more resilient road.
- 45 metres of new watermain has been installed and commissioned at the intersection, improving long-term water service reliability.
- The final wastewater manhole has been installed and the network connection is now complete.

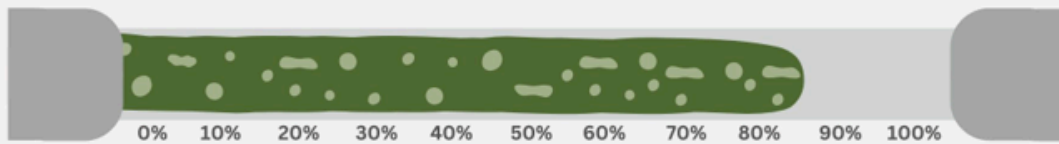
Aorangi Road North (Between Condell Avenue and Wairakei Road)

Highlights from the Past Month:

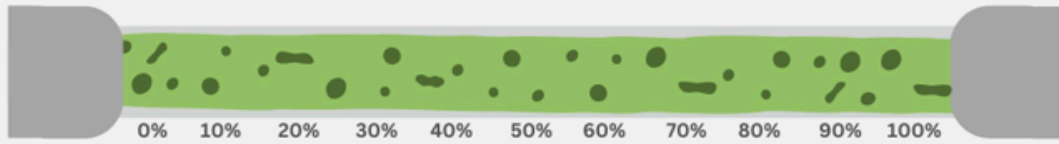
It's been a productive month on Aorangi North with multiple underground networks completed and surface works underway.

- Key sections of the new stormwater network have been successfully installed.
- The remaining stretches of the watermain were laid, bringing us close to full completion.
- We've begun carriageway dig outs, kicking off the next phase of road renewal.
- Another section of footpath has been completed, making pedestrian areas safer and more accessible.

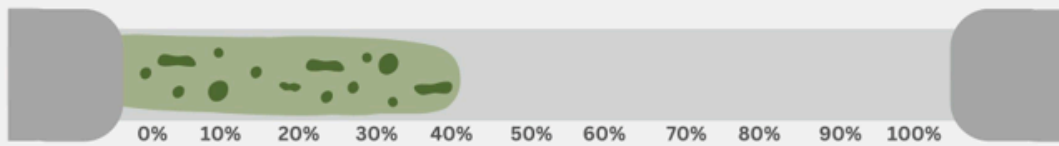
Wairakei wastewater



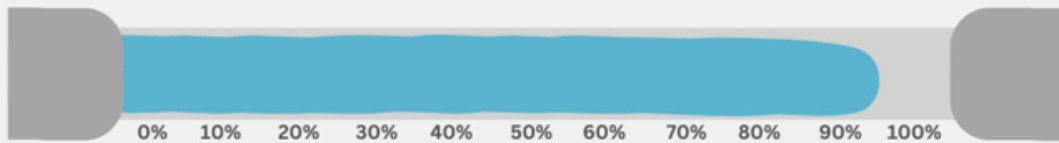
Aorangi north wastewater



Aorangi south wastewater



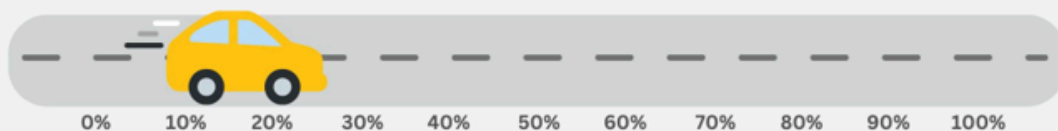
Aorangi watermain



MCR Nor'West Arc



Road renewal



Upcoming impacts

During the month of June, both Wairakei Road and Aorangi Road will see significant progress across stormwater, roading, and cycleway infrastructure. Here's what you can expect to see on the ground over the coming weeks:

To see updated work notices of these impacts please use this [link](#).

Wairakei Road and Aorangi Road South (Between Colwyn Street and Wairakei Road)

With major underground works nearly complete, the focus is now shifting to reinstatement and surface enhancements.

Over the coming month, crews will be completing the final section of the wastewater line on Wairakei Road, marking a major milestone in the project. Attention will also turn to the installation and commissioning of traffic signals, including standing the new poles and completing final ducting and access chamber work on the southern side. Once the trench line has been reinstated, resurfacing of Wairakei Road will begin to restore the road to its final condition. The removal of sheet piles is now in its final stages, and more kerb and channel work will continue to take shape around the intersection to define the new road layout.

Aorangi Road North (Between Condell Avenue and Wairakei Road)

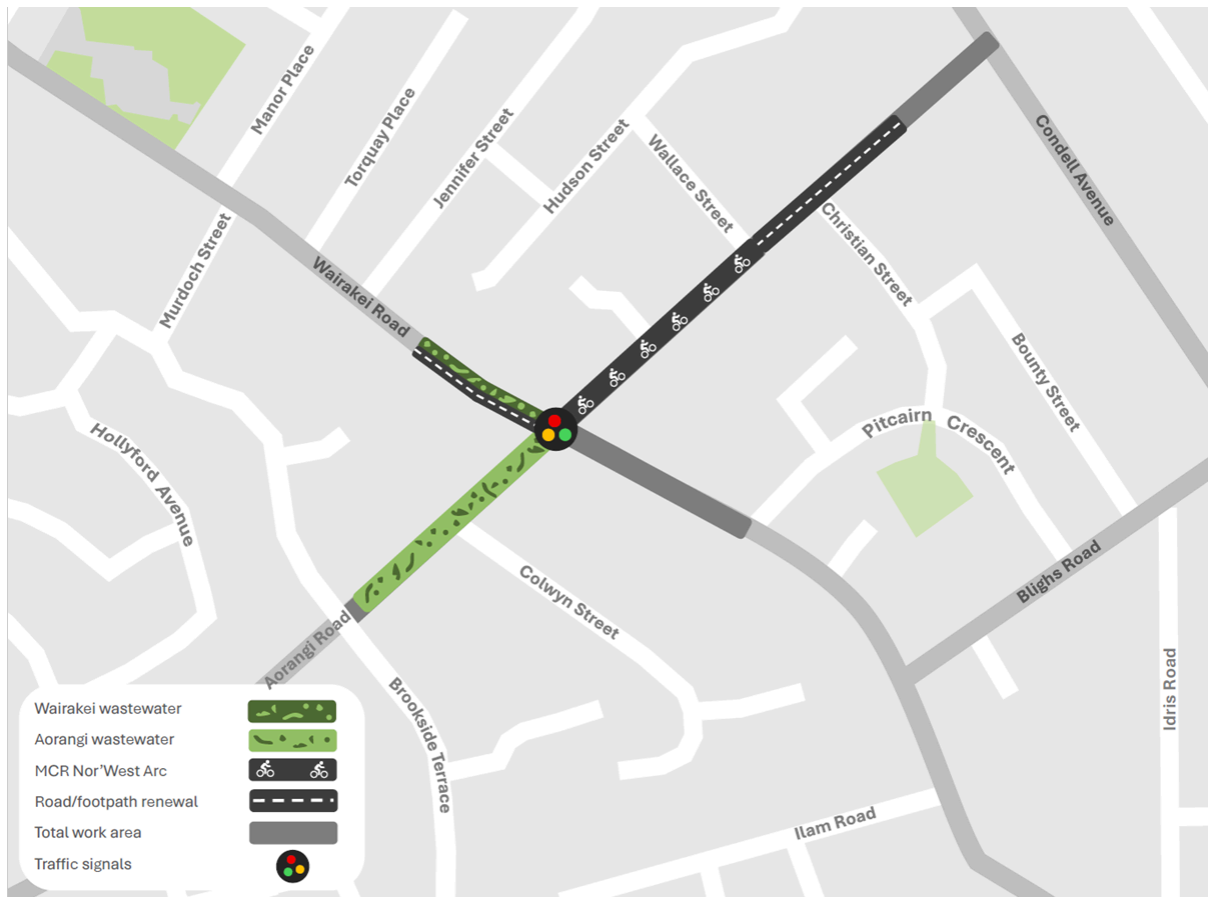
The next stage of work will focus on building up the surface layers and progressing key pedestrian and cycleway improvements.

Over the coming month, the team will be completing the last sections of the stormwater network, ensuring the area is fully upgraded for future weather resilience. This will be followed by continued kerb and channel pours, helping to shape and define the new road layout. Work on the cycleway and carriageway will progress with further dig outs, backfilling, and the beginning of sealing on the first completed section. Crews will also continue laying new footpath sections, providing safer access for pedestrians and completing more of the permanent streetscape.

July 2025 map

Please see below a map of the planned works for July 2025.

The map shows the approximate areas where we will be working and the type of work we will be carrying out in the month of July. We will continue to work with residents and businesses in these areas around managing access and disruption.



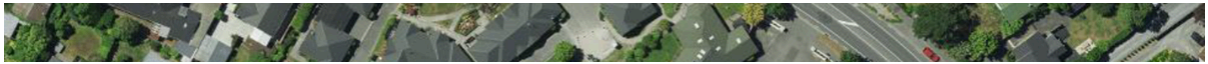
Upcoming event

Project update drop-in session. Elmswood Retirement Village community centre, 56 Colwyn Street, 5pm Tuesday 3 June

We want to talk to you about our works and share our plan for what is coming. After our meeting, the Isaac project team will be around to answer any questions you may have.

Please use this [link](#) to register your interest for this event.

If you would like to sign up to our e-text system to receive regular updates, please contact Isaac Construction on 027 323 0056 or MCRnorwestarc@isaac.co.nz or follow this [link](#).



What's happening on site?

Understanding Road Construction: What's Beneath the Surface?

This month, we'd like to share a behind-the-scenes look at why we're doing this work and how new road construction is built to last — from the ground up.

The existing road in this area was built on a thinner layer of aggregate, over time this has led to faster wear and tear, more frequent repairs, and increased vibrations felt in nearby homes. To fix this properly, we're not just resurfacing the road we're rebuilding the road with a much stronger foundation. This will significantly increase its durability, reduce ongoing maintenance, and create a smoother, quieter ride for years to come.

How Roads Are Built: Layer by Layer
Road construction involves carefully layering materials (called aggregates), each designed to add strength and stability:

Subgrade, this is the native soil beneath the road. We test this to make sure it can support everything above.

Subbase, a layer of crushed stone or gravel is added to distribute weight

evenly and help with drainage — keeping the road from weakening during wet conditions.

Base Course, this is a stronger, more tightly packed layer of aggregate that provides the main structural support for the road.

Surface, this is the top layer you'll see and drive on — designed to be smooth, weather-resistant, and long-lasting.

What This Means for You

Once completed, the new road will be much more robust. Residents can expect fewer repairs, a longer-lasting surface, and — importantly — less vibration in nearby homes caused by passing vehicles.

What's on in the neighbourhood?

Be sure to check out some of these fantastic businesses and deals in the area. The neighbourhood is open for business!

EarCare have temporarily moved!

131 Wairakei Road, Bryndwr

Their new location is Villa 23 at the Elmswood retirement village!

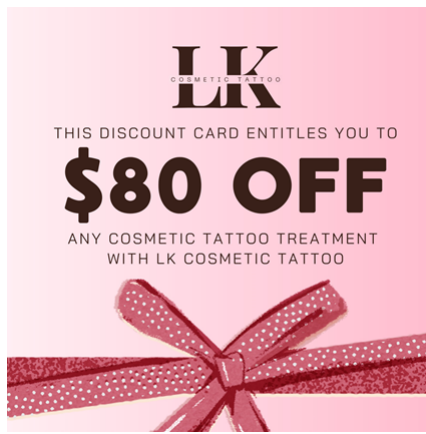
[FIND OUT MORE](#)

Aorangi Bakery have moved!

263 Greers Road, Bryndwr

Pop down to their new store to grab some of their great food!

[FIND OUT MORE](#)



LK Cosmetic Tattoo Specialist

212 Wairakei Road, Bryndwr

Show this voucher and receive \$80 off any power eyebrows or eyeliner cosmetic tattoo service!

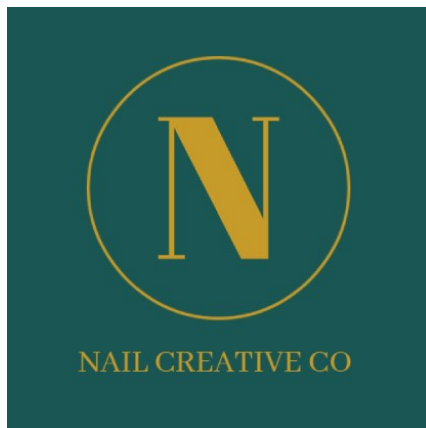
[FIND OUT MORE](#)

The Indian Bites

169C Wairakei Road, Bryndwr

Craving authentic flavours? Come experience the best of Indian cuisine at The Indian Bites!

[FIND OUT MORE](#)



Nail Creative Co

169 Wairakei Road, Bryndwr

Contact the team on 021 0876 2512

[FIND OUT MORE](#)



The Hair Factory

85 Aorangi Road, Bryndwr

Discover The Hair Factory: Your Destination for Stunning Hair Transformations!

[FIND OUT MORE](#)

Aorangi Dairy

169 Wairakei Road, Bryndwr

Pop down to the Aorangi Dairy for a great range of drinks & snacks!

[FIND OUT MORE](#)

Beauty Lies Within

169 Wairakei Road, Bryndwr

Try out the wide range of services that are designed specifically for you!

[FIND OUT MORE](#)

Have anything to share?

We love supporting local! Send us an email with some information about your most recent promotion and we'll feature it in our next newsletter! Email us on **MCRnorwestarc@isaac.co.nz**