

We're working in your area

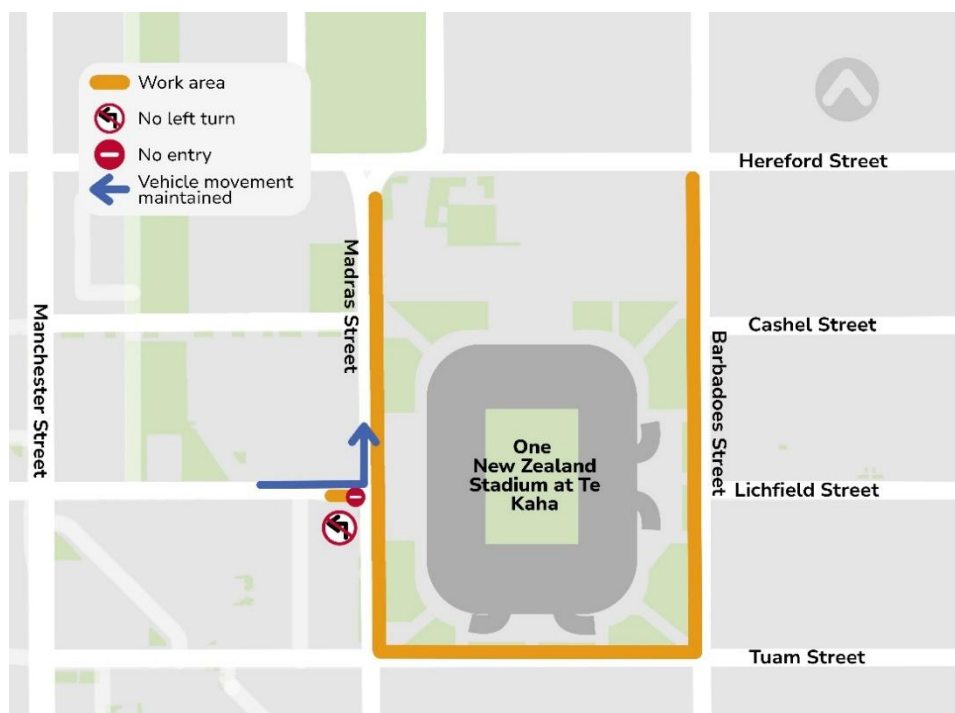
Te Kaha Surrounding Streets – paving installation

What	Paving work.
Why	We're strengthening a section of pavers at the Lichfield Street and Madras Street intersection.
Where	Lichfield Street and Madras Street intersection.
When	Monday 8 December 2025 – Wednesday 10 December. Monday to Wednesday, 6pm to 6am (weather/site condition dependent).
Contact	The contractor working on behalf of Christchurch City Council is Isaac Construction Limited. Contact Communications Advisor on 027 314 5534 or email communications@isaac.co.nz, Monday to Friday, 7am to 6pm.

Details:

Please see overleaf a diagram of the worksite.

- **This work is expected to be completed in 1 night, with Tuesday 9 and Wednesday 10 December held as contingency dates.**
- This work will take place in the evening, between 6pm and 6am.
- Lichfield Street will be no entry from Madras Street.
- Left turn from Lichfield Street onto Madras Street will be maintained.
- Please follow all signage and instructions from staff.
- Some footpaths may be impacted while work takes place. When this happens there will be pedestrian detours put in place.
- Increased construction noise disturbance may be encountered but will be kept to a minimum.
- Work will have no impact on any services such as electricity, water, telecommunication, and gas.
- A 30kph speed limit will be in place so we can keep our workers and everyone safe.
- We know this work can be disruptive, so we appreciate your patience and understanding. Thanks for your cooperation.



Thank you for your patience as we carry out this work.

Isaac Construction