

We're working in your area

Nor'West Arc Cycleway

Domain Terrace and Edinburgh Street Intersection

What Footpath, kerb and channel, road construction, landscaping

Where Intersection of Domain Terrace and Edinburgh Street

When Monday 19 October to Saturday 24 October – hours of work Monday to Saturday, 7am – 6pm

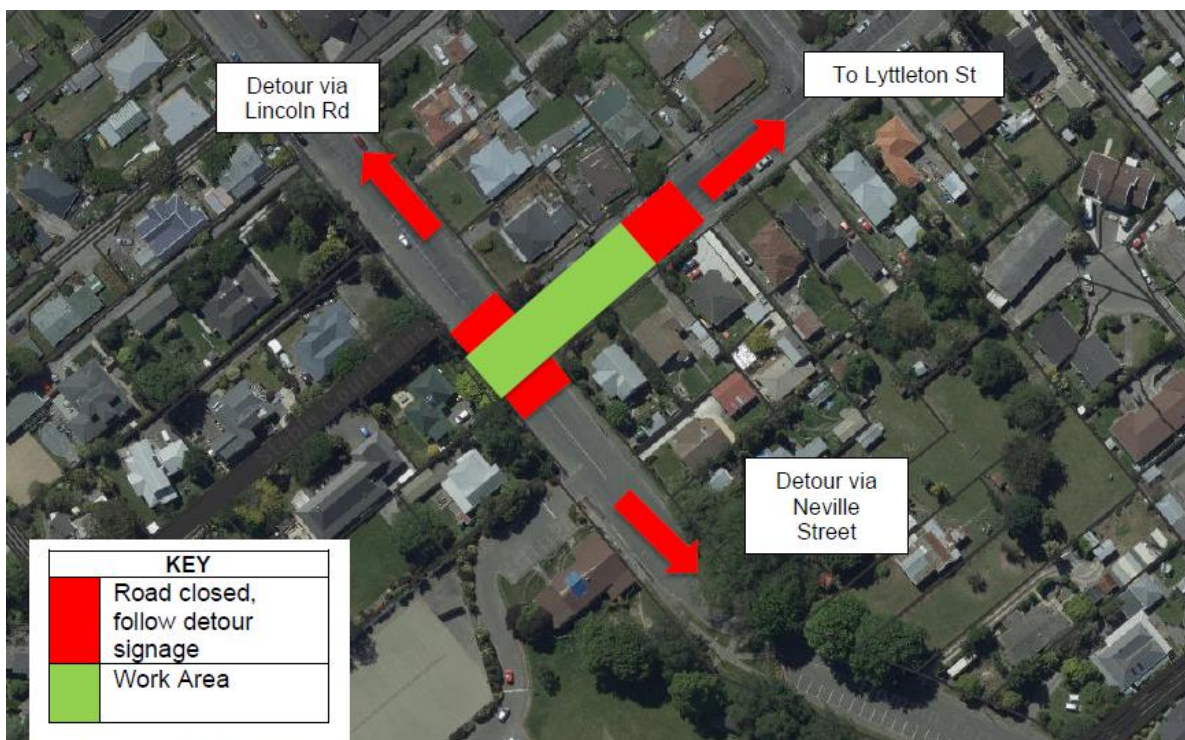
Why To enable the construction of the Nor'West Arc Cycleway. Our network of cycleways are making it safer and easier for people to cycle. More people cycling eases the pressure on our roads.

Contact Isaac Construction – Communications Manager: Jessica Swift – jswift@isaac.co.nz phone – 027 207 4631

Details

Traffic Impacts

- **Temporary road closure from #86 to #88 Domain Terrace to #8 Edinburgh Street up to the intersection.**
- Domain Terrace will still have a two lane diversion in place in conjunction with the intersection closure.
- The intersection closure will impact Domain Terrace residents who will need to detour via:
 - Domain Terrace residents on the northern side of the intersection, detour via Lincoln Road.
 - Domain Terrace residents on the southern side of the intersection, detour via Neville Street and onto Lyttleton Street
- Please note, pedestrian access will be maintained but may change on a day to day basis depending on the works.
- Between the hours of 7am and 6pm, residents requiring access to their properties where there is no designated pedestrian walkway will be escorted by a crew member to ensure a safe entry/exit to and from their properties.



General Information:



Please contact Isaac Construction on 03 359 9145 if you have any specific access requirements that we need to consider e.g. nurse/doctor visits, Meals on Wheels, or planned works on our



There will be increased noise, dust and vibration levels.



Works will have no planned impact on current power, telecommunication of gas services. However, the network is still fragile so please be prepared in case there is an unexpected service cut off.



All works are subject to favourable weather and on-site construction conditions.



Your rubbish and recycling will not change. Please put your bins in the normal spot by 5:00pm the night before collection and our crew will move and return them if needed.



Safety is our number one priority. Safety is your responsibility too. Stay clear and stay alert - keep children and pets at a safe distance from the work site.



Our standard work hours are Monday to Friday between the hours of 7:00am to 6:00pm, however sometimes we will need to work at night to complete the work. We will notify you before we do this.

For online updates head to: <https://isaac.co.nz/projects/ongoing/mcr-cashmere-annex>

Thanks for your patience as we work in your area



Noise

There may be increased noise, dust and vibrations during work but it shouldn't impact on your power, water, gas or phone services.



Safety

Safety is our biggest priority so please keep children and pets away from worksites.



Other projects

Learn more about the Council's road and pipe works.

ccc.govt.nz/works