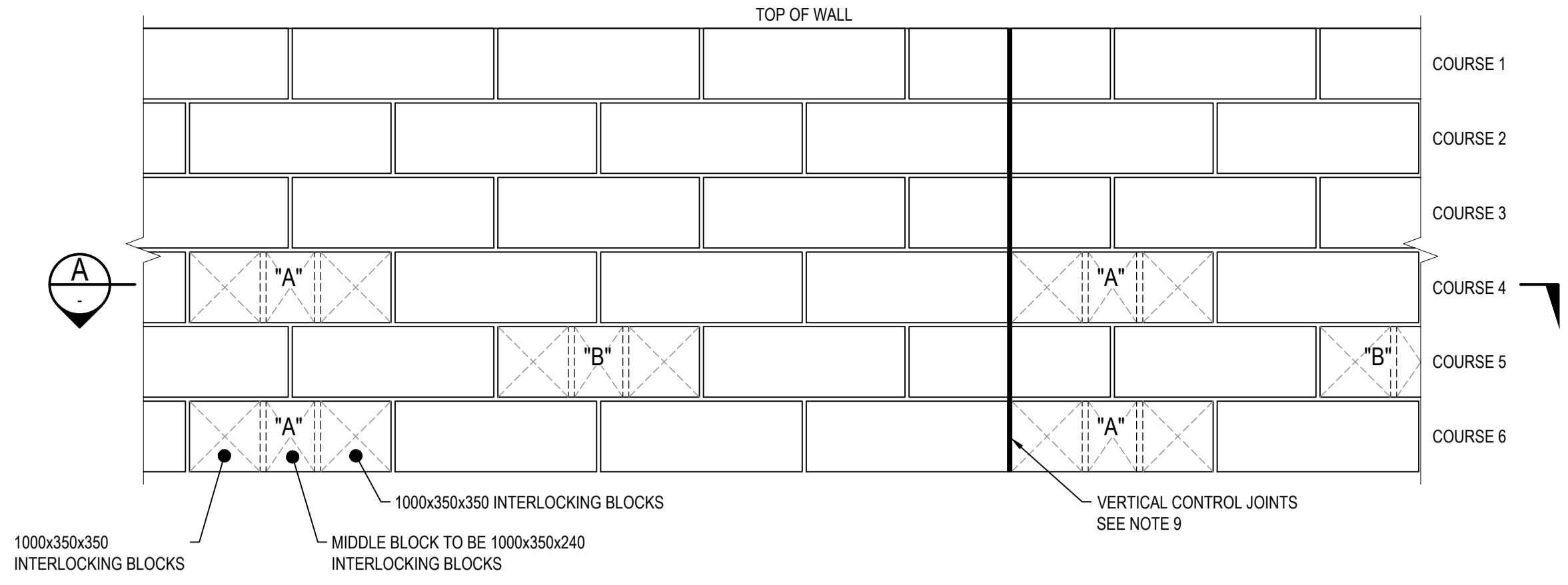
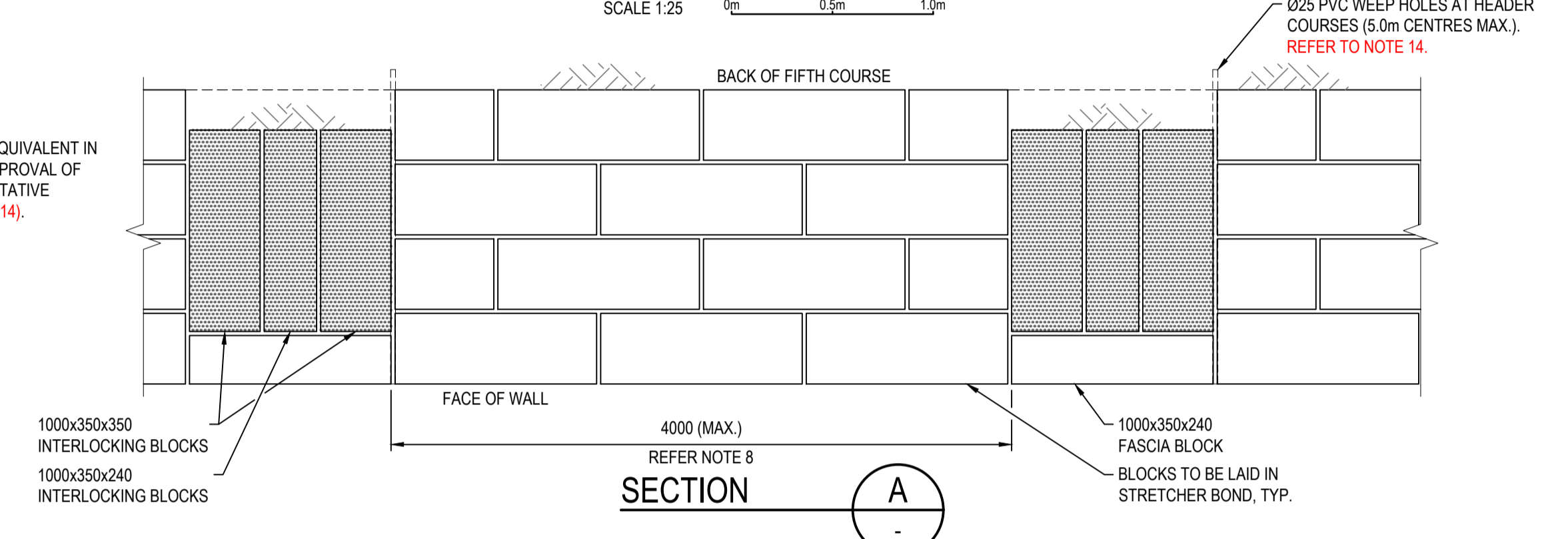


TYPICAL MASS BLOCK RETAINING WALL DETAIL - TYPE 3 - CLASS "A"
SCALE 1:25



TYPICAL MASS BLOCK RETAINING WALL "TYPE 3" ELEVATION
SCALE 1:25



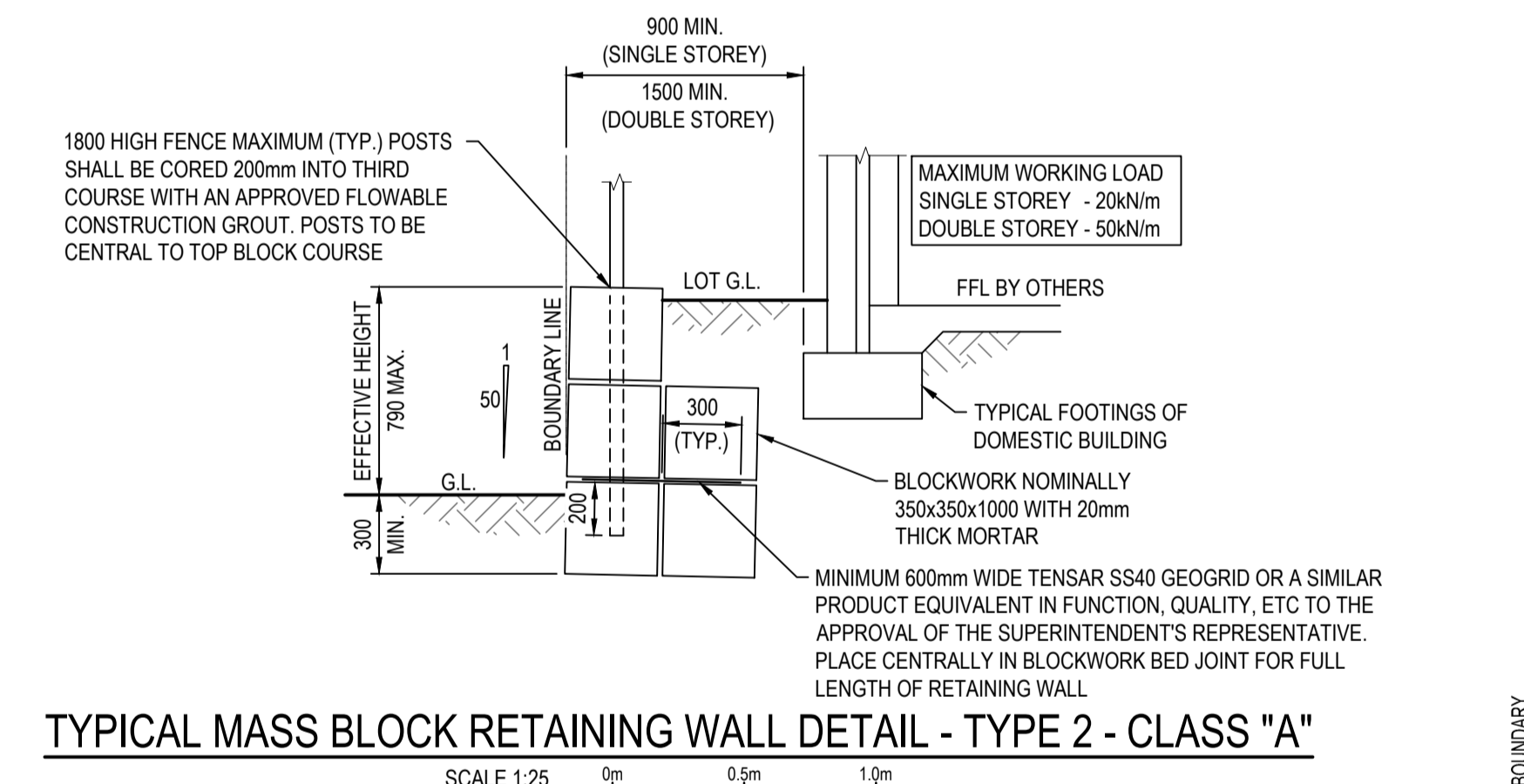
TYPICAL MASS BLOCK RETAINING WALL HEADER LAYOUT
SCALE 1:25

MASS BLOCK RETAINING WALL AND FENCE NOTES

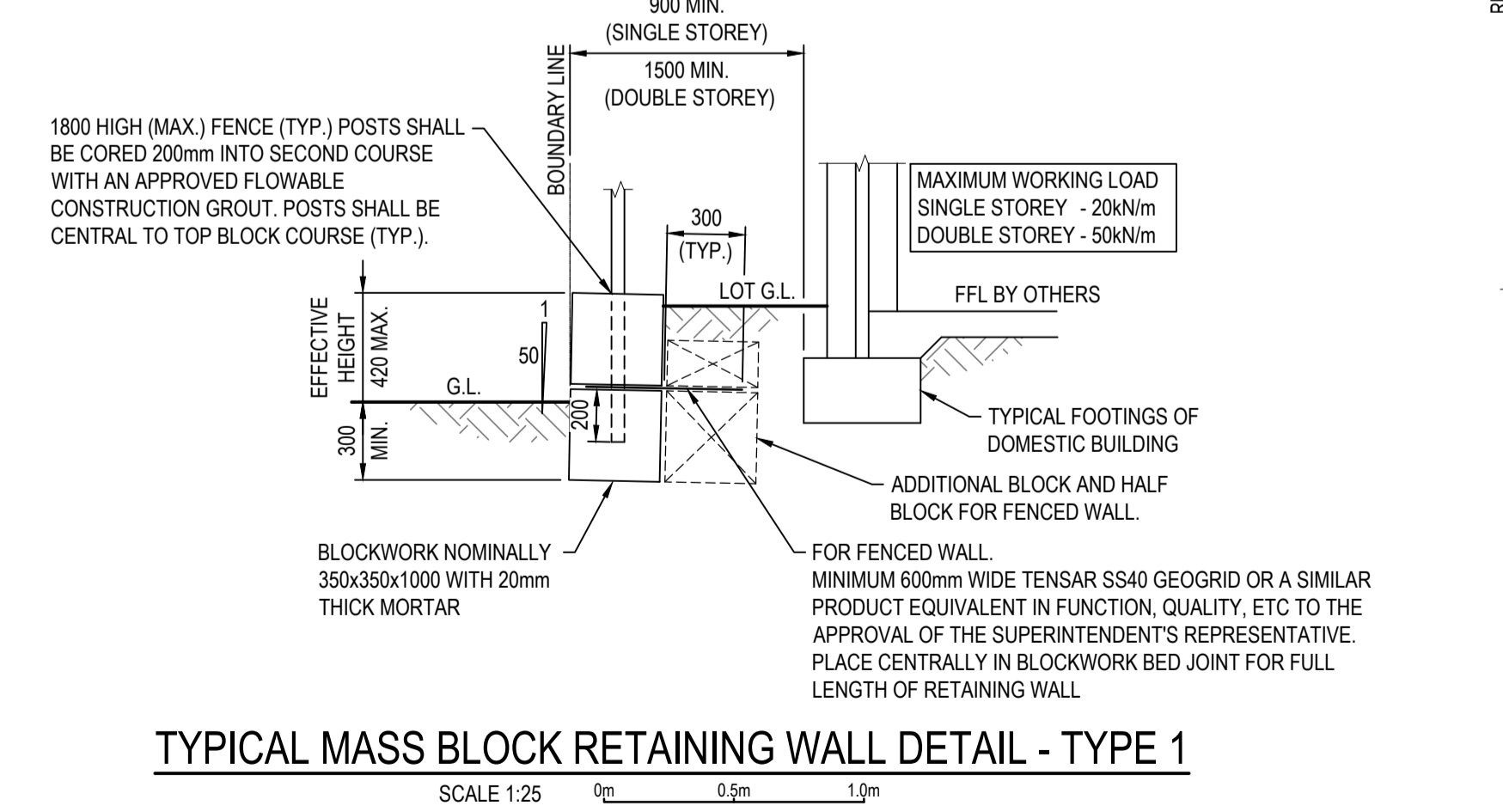
1. COMPACT GROUND UNDER FOOTING TO RESIST 8 BLOWS PER 300mm OF A STANDARD 16mm DIA PENETROMETER OVER A DEPTH OF 600mm
2. MASS RETAINING WALL BLOCKS MUST BE RECONSTITUTED LIMESTONE BLOCKS AND BE A MINIMUM DENSITY OF 1800kg/m³ (DRY).
3. MORTAR MIX SHALL COMPRISE 1 PART WHITE CEMENT, 1 PART LIME PUTTY, AND 6 PARTS CLEAN YELLOW SAND OR 1 PART WHITE CEMENT, 0.5 PART LIME PUTTY AND 4.5 PARTS YELLOW SAND IF LESS THAN 1km FROM THE COAST. ALL BLOCK WORK SHALL BE FULLY MORTARED TO ADJACENT BLOCKS.
4. THESE WALLS ARE APPLICABLE FOR CLASS 'A' CONDITIONS ONLY TO AS 2870. ALL OTHER CONDITIONS TO BE REFERRED TO ENGINEER.
5. ALL MASS BLOCK RETAINING WALLS HAVE BEEN CALCULATED WITH A HORIZONTAL BACKFILL. ANY OTHER CIRCUMSTANCES TO BE ASSESSED INDIVIDUALLY.
6. THE MASS BLOCK RETAINING WALL HAS BEEN DESIGNED TO SUPPORT A 5kPa SURCHARGE.
7. INTERLOCKING BLOCK COURSE TO BE STAGGERED AS PER TYPICAL DETAIL.
8. WALL TO HAVE INTERLOCKING BLOCKS COMMENCING AT 4th COURSE FROM TOP.
9. WALLS SHALL HAVE VERTICAL CONTROL JOINTS AT INTERVALS OF NO MORE THAN 10 METRES FOR TYPE 1 WALLS, 15 METRES FOR TYPE 2 AND 3 WALLS. PREFERABLY LOCATED AT PROPERTY BOUNDARIES. JOINTS REQUIRED ALSO ON CORNERS AS PER ATTACHED DETAIL. JOINTS SHALL BE 20mm WIDE, BE FILLED WITH A 25mm CLOSED CELL FOAM AND SEALED WITH AN APPROVED POLYURETHANE JOINT FILLER.
10. NO BACKFILLING UNTIL 7 DAYS AFTER WALLS HAVE BEEN BUILT. COMPACT USING LIGHT EQUIPMENT TO DISTANCE BACK FROM THE FACE OF WALL EQUAL TO THE EFFECTIVE HEIGHT.
11. FENCE TO BE PROPRIETARY SYSTEM BY OTHERS - WALL DESIGNED FOR WIND REGION A ONLY.
12. FENCE POSTS SHALL BE AT 2400mm MAXIMUM CENTRES.
13. A NON SACRIFICIAL ANTI GRAFFITI COATING IS TO BE APPLIED TO WALLS FACING A ROAD, P.A.W. OR P.O.S.
14. WEEPHOLES TO BE CONSTRUCTED IN WALLS WHERE FOOTINGS ARE IN CLAY, ROCK, CAPSTONE OR LESS THAN 600mm OF SAND AND/OR IN AREAS OF HIGH GROUND WATER (TYP.).

WALL TYPE "3"

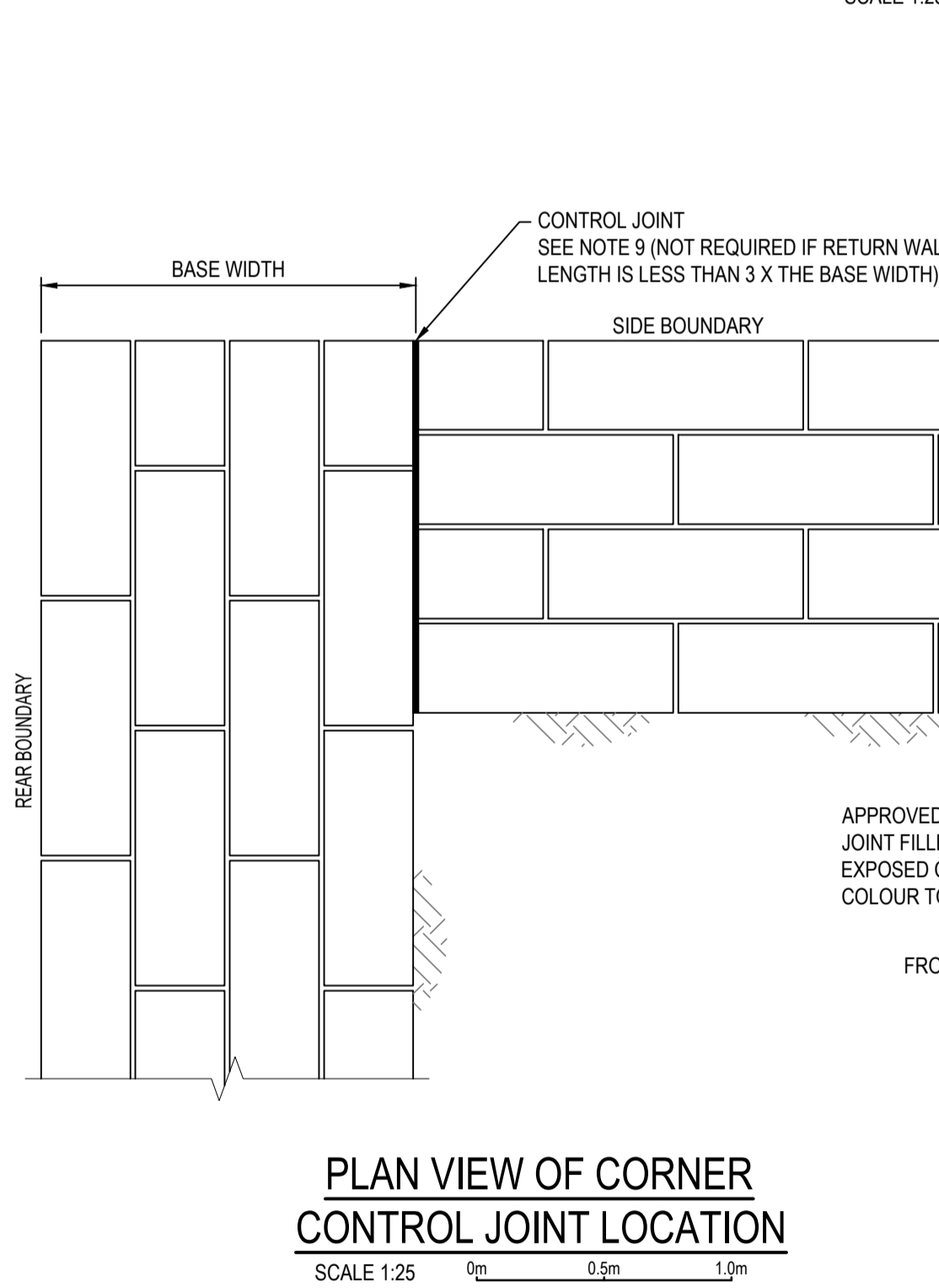
COURSES	TOTAL HEIGHT	EFFECTIVE HEIGHT RANGE	BASE WIDTH	MIN. TOE DEPTH
4	1460	790 - 1110	1090	350
5	1830	1111 - 1480	1460	350
6	2200	1481 - 1850	1460	350
7	2570	1851 - 2170	1830	400
8	2940	2171 - 2540	2200	400
9	3310	2541 - 2810	2200	500
10	3680	2811 - 3180	2570	500
11	4050	3181 - 3550	2940	500



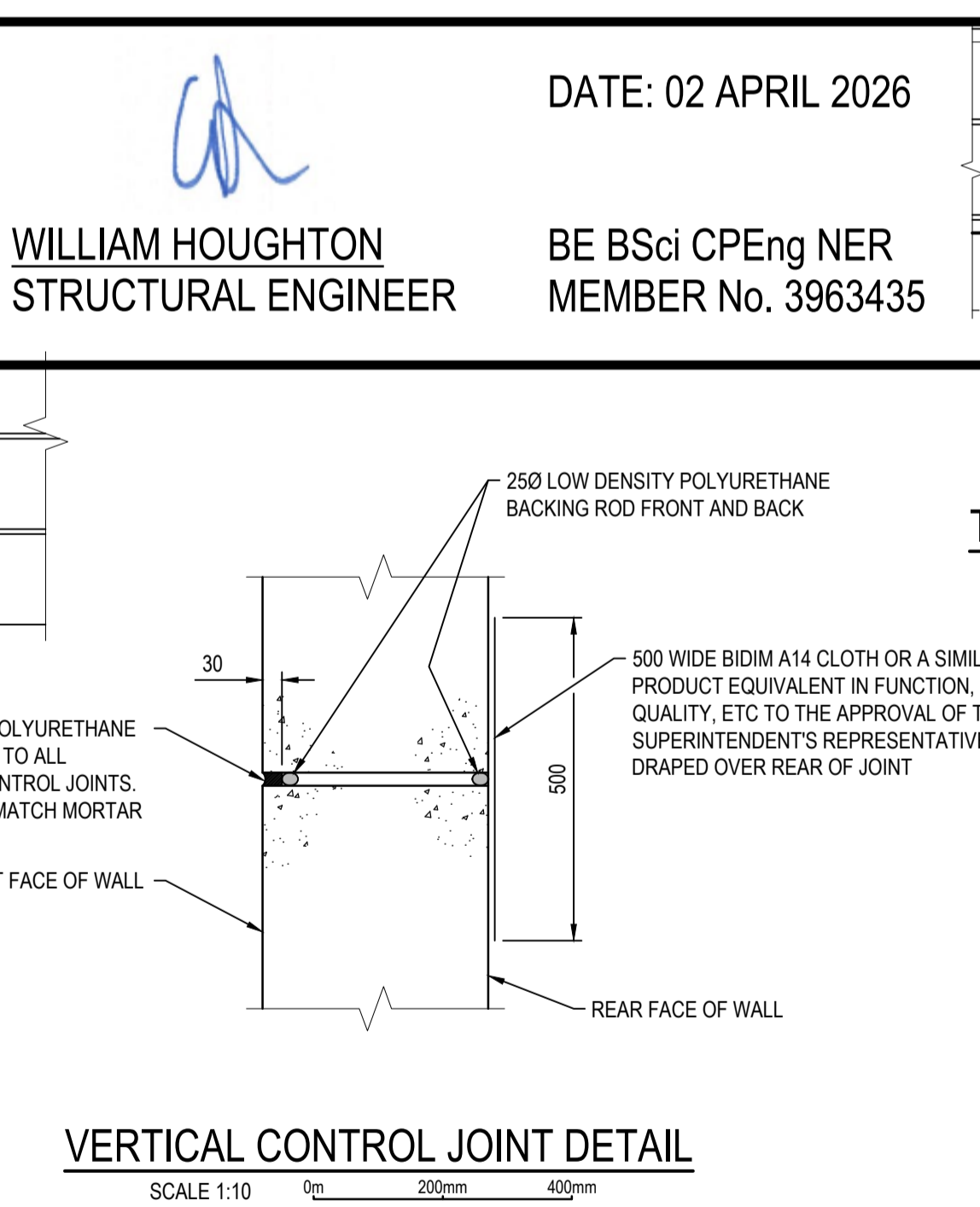
TYPICAL MASS BLOCK RETAINING WALL DETAIL - TYPE 2 - CLASS "A"
SCALE 1:25



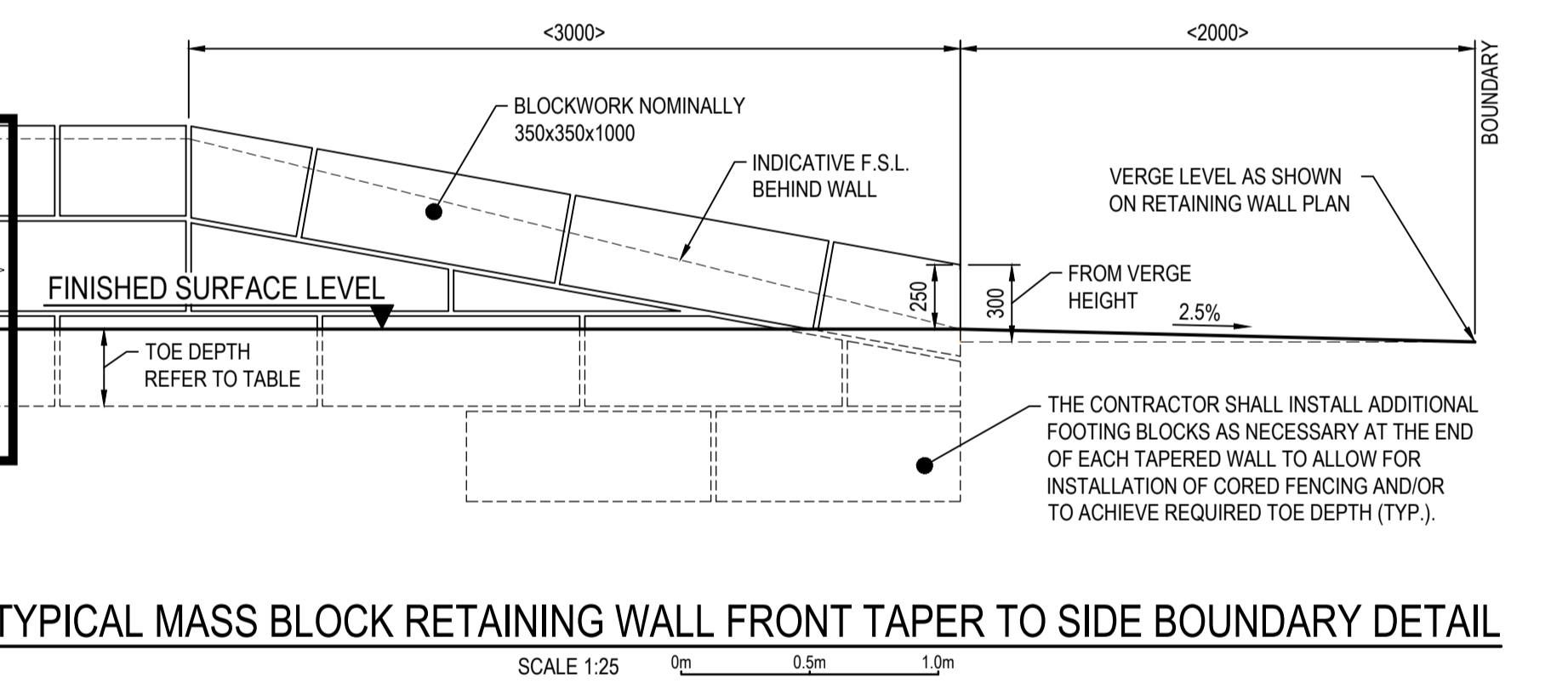
TYPICAL MASS BLOCK RETAINING WALL DETAIL - TYPE 1
SCALE 1:25



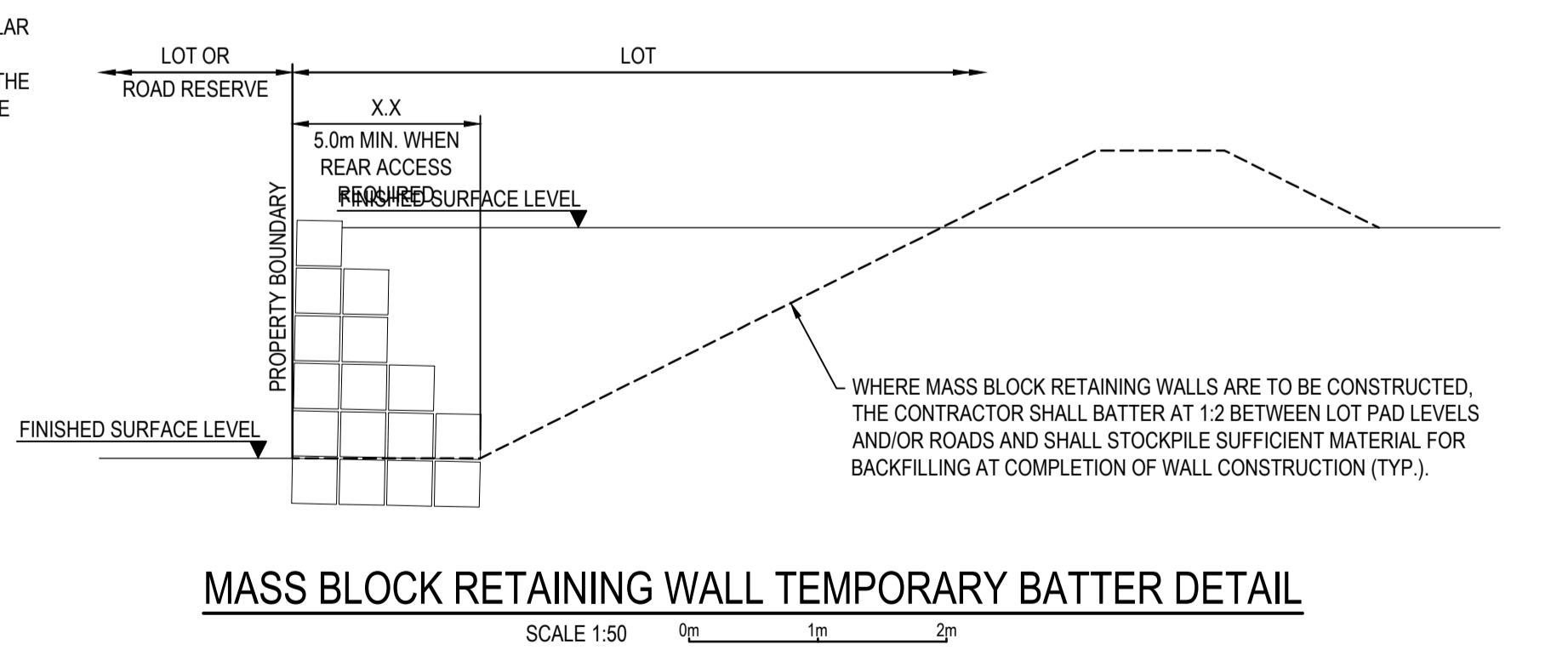
PLAN VIEW OF CORNER CONTROL JOINT LOCATION
SCALE 1:25



VERTICAL CONTROL JOINT DETAIL
SCALE 1:10



TYPICAL MASS BLOCK RETAINING WALL FRONT TAPER TO SIDE BOUNDARY DETAIL
SCALE 1:25



MASS BLOCK RETAINING WALL TEMPORARY BATTER DETAIL
SCALE 1:50

TYPICAL CLASS 'A' MASS BLOCK RETAINING WALL DETAILS

C1-A-01
AS SHOWN

DATE: 02 APRIL 2026

WILLIAM HOUGHTON
STRUCTURAL ENGINEER

BE BSci CPEng NER
MEMBER No. 3963435



DRAWING STATUS				CLIENT	
FOR CONSTRUCTION				LAND GROUP (WA) - HOCKING PTY LTD	
DATE	DESIGNED	DRAWN	CHECKED	GRID	DATUM
DECEMBER 2025	DG	DG	EH	PCG94	AHD
APPROVED				TITLE	
PP				RETAINING WALL DETAILS PLAN	
SCALE 1:10				SHEET SIZE	
AS SHOWN @				A1	
202120				ORG No.	
				25201-C7-TD-05	
				REVISION	
				0	

FILE PATH: T:\PROJECTS\PP\25201 HOCKING CAD DRAWINGS\STAGE 01\25201-C7-TD-05