



Mons-D

Trunking System



The Commons, Cremorne, VIC



About Mondolux

Mondolux is an innovative lighting brand developed by Aglo Systems. The Mondolux brand showcases on-trend lighting products with the latest technology and guaranteed quality to make the entire process clear and simple. Our promise is to continually improve our clients' lighting experience.

Quick Turnaround Times

With a stocked warehouse of 3000 sqm and an experienced assembly team in Melbourne, we are able to fulfil your orders quickly.

Technical Data

Clear technical drawings, detailed product photos, illumination diagrams, IES files and installation instructions are some of the downloadable resources we have available for all our products.

Comprehensive Catalogue

We understand the need to use several variations of a fitting in a space to meet the desired interior architecture

and illumination needs. We offer a wide range of products available in many sizes, lumen outputs, beam angles, accessories and colour temperatures.

Easy Product Search and Selection

Our website is a platform which enables users to find the perfect lighting solution in a quick and easy way. The user can select the different features of the required lighting product and quickly identify all products that meet these specifications and have the required technical data at their fingertips.

Guaranteed Quality Product

Our products are thoroughly tested, warranted and certified to meet Australian, New Zealand and European compliance standards.

Mons-D Trunking System

Introducing Mons-D Trunking System

Unleash creativity and versatility providing a highly efficient, clean and sleek design aesthetic, ideal for commercial, architectural and residential lighting applications. An energy-efficient, low maintenance and easy to install alternative to traditional linear fluorescent will provide the most innovative solution for your next project. This modular system allows easy maintenance and the flexibility to upgrade or change lighting options with ease.

Key Features:

- Four product variants available: Mons-D, Mons-D Honeycomb, Mons-D Louvre & Mons-D Micro Prismatic
- Saving energy: improved efficiency, typically up to 135lm/W at CRI90 (Mons-D version)
- Saving installation costs: modular and tool-free design
- Saving maintenance costs: 5-year warranty*
- Easy installation: simply click to connect, multiple lengths together. Note: all product variants are linkable to form a run, however this is not recommended. Please contact Mondulux for further information.
- Lumen maintenance: L70 (@25°C) >54,000 Hrs
- Trunking system: modules come pre-wired
- CCT: 3000K, 4000K, 5000K (optional)
- Power options:
 - 4 ft; 21W, 30W
 - 5 ft; 27W, 37W
- Multiple controls: DALI, Non-Dim, Casambi and 0-10V dimming
- Dimensions:
 - Mons-D 4ft; 1127mm x 50mm x 75mm / 5ft; 1408mm x 50mm x 75mm
 - Mons-D Honeycomb 4ft; 1123mm x 50mm x 75mm / 5ft; 1403mm x 50mm x 75mm
 - Mons-D Louvre 4ft; 1123mm x 50mm x 80mm / 5ft; 1403mm x 50mm x 80mm
 - Mons-D Micro Prismatic 4ft; 1127mm x 50mm x 75mm / 5ft; 1408mm x 50mm x 75mm
- Input voltage: 220-240V AC, 50/60Hz
- Finish: White, Black
- Installation method: Surface Mounted, Suspended
- 7 pre-wired trunking rails with 3 pins for easy phase selection
- Completely linkable with seamless connection
- Standard beam angles:
 - Mons-D; 50°, 80°, 120°
 - Mons-D Honeycomb; 80°
 - Mons-D Louvres; 76°
 - Mons-D Micro Prismatic; 87°
- UGR <19**
- IP50 and IK05 rated
- Amazing add-on features: Emergency/Sensor/Dimming/Track modules
- Local assembly and stock availability



*Please see Warranty Terms & Conditions for further information. **UGR values are subjected to lighting design & selected optics.
Page 4



The Commons, Cremorne, VIC

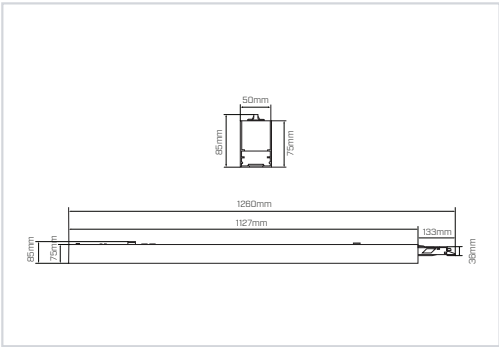
Product Information

Mons-D

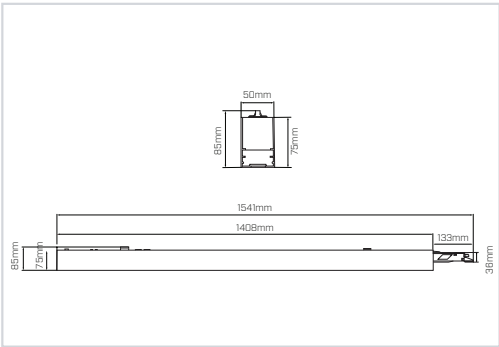


MR22 / MR25 Mons-D	
Finish	White, Black
System Efficiency	135lm/W*
Dimensions	4ft: 1127mm x 50mm x 75mm 5ft: 1408mm x 50mm x 75mm
Power	4ft: 21W, 30W 5ft: 27W, 37W
Multiple Controls	DALI, Non-Dim, Casambi and 0-10V dimming
Colour Temperature (CCT)	3000K, 4000K, 5000K (optional)
Colour Rendering Index (CRI)	CRI90
Beam Angles	50°, 80°, 120°

Specification 4ft



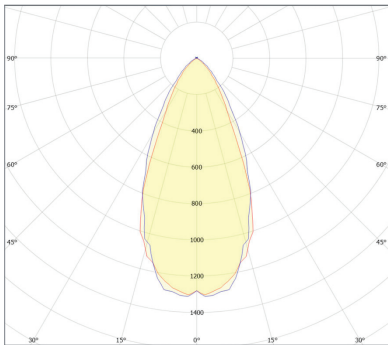
Specification 5ft



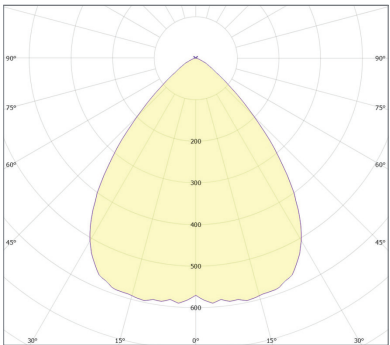
Photometric Information

Standard Beam Angles

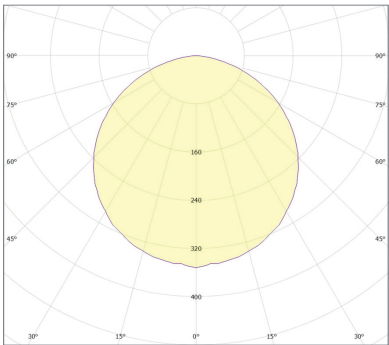
Mons-D 50°



Mons-D 80°



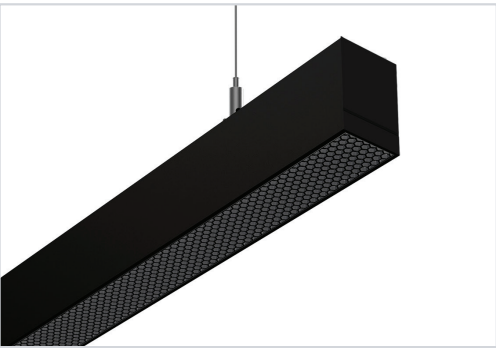
Mons-D 120°



*Lumen efficiency up to 135lm/W at CRI90.

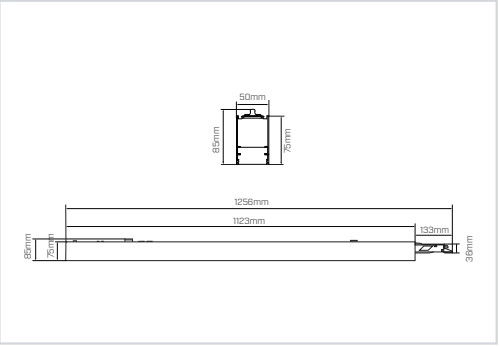
Product Information

Mons-D Honeycomb

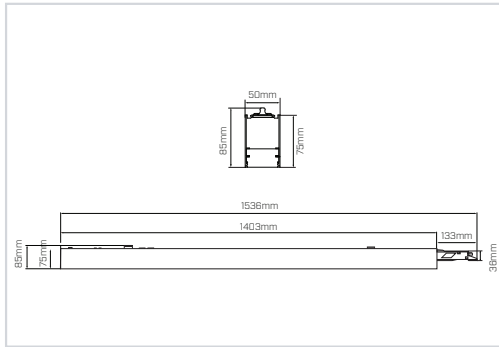


MR22 / MR25 Mons-D Honeycomb	
Finish	White, Black
System Efficiency	60lm/W*
Dimensions	4ft: 1123mm x 50mm x 75mm 5ft: 1403mm x 50mm x 75mm
Power	4ft: 21W, 30W 5ft: 27W, 37W
Multiple Controls	DALI, Non-Dim, Casambi and 0-10V dimming
Colour Temperature (CCT)	3000K, 4000K, 5000K (optional)
Colour Rendering Index (CRI)	CRI90
Beam Angle	80°

Specification 4ft



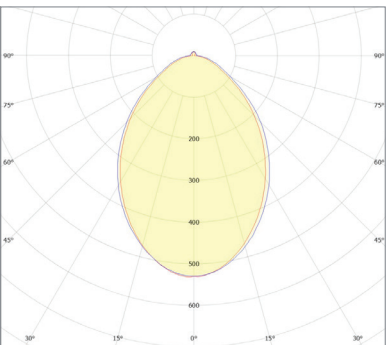
Specification 5ft



Photometric Information

Standard Beam Angles

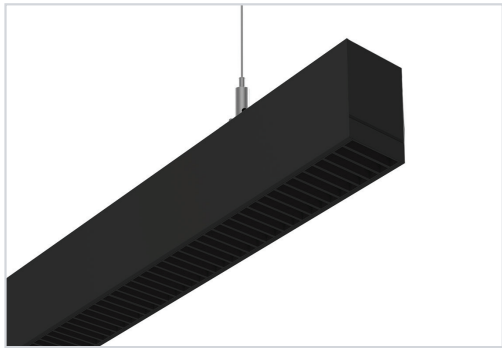
Mons-D Honeycomb 80°



*Lumen efficiency up to 60lm/W at CRI90.

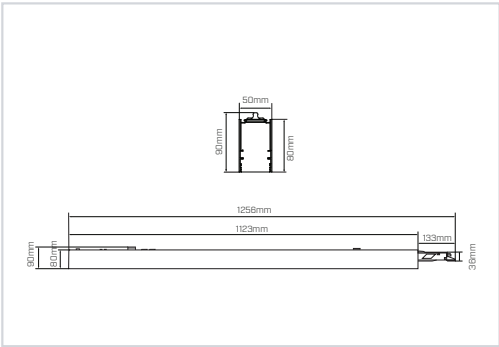
Product Information

Mons-D Louvre

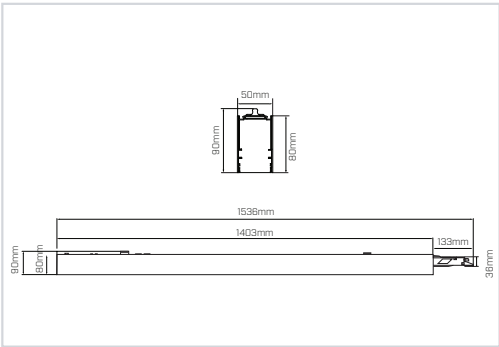


MR22 / MR25 Mons-D Louvre	
Finish	White, Black
System Efficiency	70lm/W*
Dimensions	4ft: 1123mm x 50mm x 80mm 5ft: 1403mm x 50mm x 80mm
Power	4ft: 21W, 30W 5ft: 27W, 37W
Multiple Controls	DALI, Non-Dim, Casambi and 0-10V dimming
Colour Temperature (CCT)	3000K, 4000K, 5000K (optional)
Colour Rendering Index (CRI)	CRI90
Beam Angles	76°

Specification 4ft



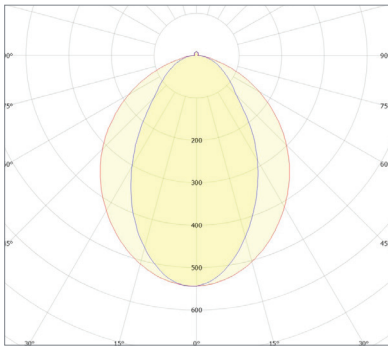
Specification 5ft



Photometric Information

Standard Beam Angles

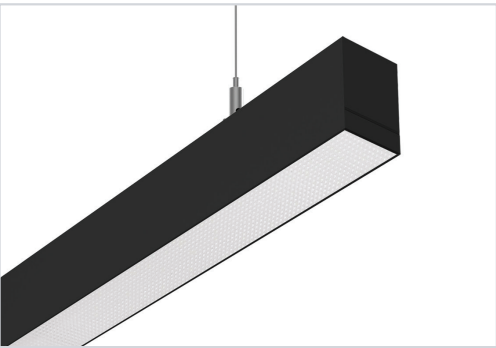
Mons-D Louvre 76°



*Lumen efficiency up to 135lm/W at CRI90.

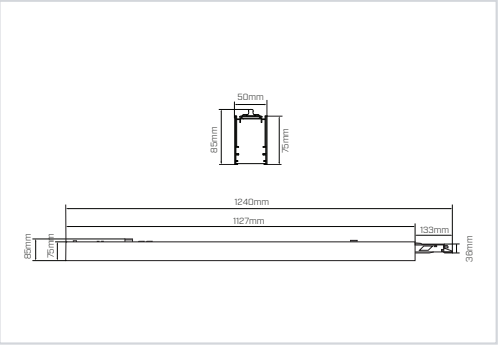
Product Information

Mons-D Micro Prismatic

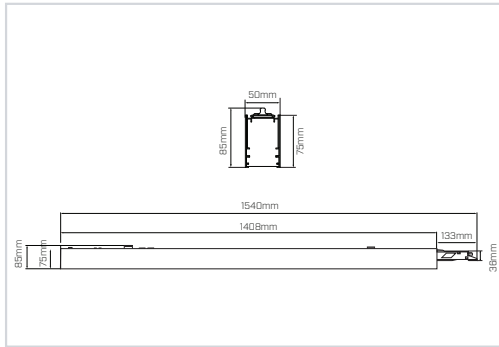


MR22 / MR25 Mons-D Micro Prismatic	
Finish	White, Black
System Efficiency	105lm/W*
Dimensions	4ft: 1127mm x 50mm x 75mm 5ft: 1408mm x 50mm x 75mm
Power	4ft: 21W, 30W 5ft: 27W, 37W
Multiple Controls	DALI, Non-Dim, Casambi and 0-10V dimming
Colour Temperature (CCT)	3000K, 4000K, 5000K (optional)
Colour Rendering Index (CRI)	CRI90
Beam Angle	87°

Specification 4ft



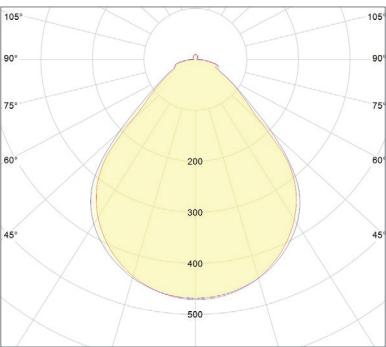
Specification 5ft



Photometric Information

Standard Beam Angles

Mons-D Micro Prismatic 87°



*Lumen efficiency up to 60lm/W at CRI90.

Code Information

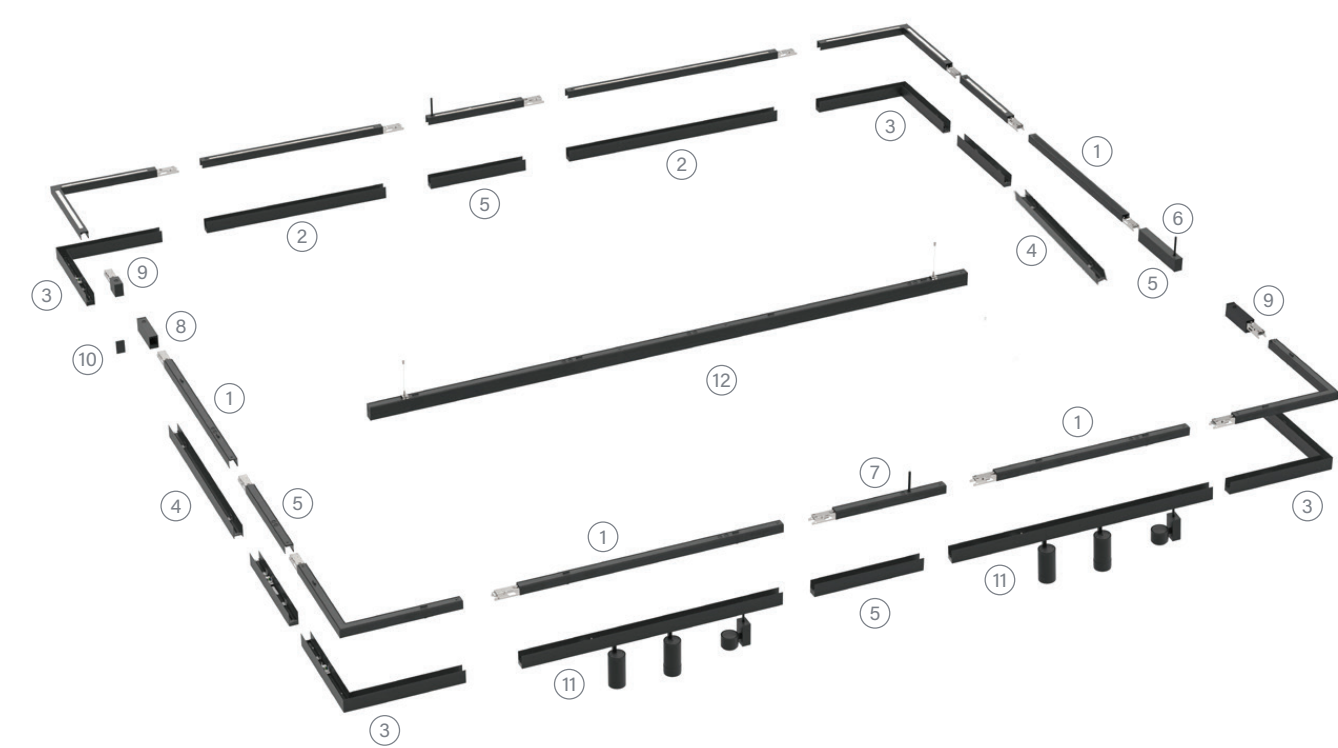
Family Code +	Product +	Installation Type +	Colour +	Beam Angle +	CCT +	Power +	Dimming Type +	Wires +	Variant +
MR = Mondolux Trunking Systems	22 = Mons-D 4FT	SS = Surface Mounted/ Suspended	1 = White	W = 50°	930 = 3000K	025A = 250mA (21W Non-Dim/ DALI)	0 = ON/OFF (Non-Dimmable)	7 = 7 Wire Trunking Rail	HC = Honeycomb*
	25 = Mons-D 5FT		2 = Black	F = 80°	940 = 4000K	050A = 500mA (21W 0-10V Dim)	1 = 0-10V Dimmable		BL = Black Louvre** WL = White Louvre**
				O = 120°		035A = 350mA (30W Non-Dim/ DALI)	3 = DALI Dimmable		MP = Micro Prismatic*
				P = Micro Prismatic 87°***		070A = 700mA (30W 0-10V Dim)			
				W = 80°*		025A = 250mA (27W Non-Dim/ DALI)			
				W = 76°**		060A = 600mA (27W 0-10V Dim)			
						035A = 350mA (37W Non-Dim/ DALI)			
						085A = 850mA (37W 0-10V Dim)			

* 80° Beam Angle only available with Honeycomb variant option ** 76° Beam Angle only available with Black Louvre and White Louvre variant option *** 87° Beam Angle only available with Micro Prismatic variant option

Example: MR22SS1F-930-030A0-7

Mondolux Trunking Systems Mons-D 4FT (1127mm) Surface Mounted / Suspended White Flat 80° CRI90 3000K 21W 3510lm 250mA ON/OFF (Non-Dimmable) (Requires Mounting Clip / Suspension Kit) C/W 7 wires

Mons-D Ecosystem



Mons-D Trunking System Components

- ①

Trunking Rail
- ②

Luminaire Module - Lens / PC cover
- ③

Corner Module - Lens / PC cover
- ④

Blank Module - Blank cover
- ⑤

DALI Sensor / 0-10V sensor
- ⑥

Start Feed - Feed in from quick-connector
- ⑦

Mid Feed - Feed in from middle position
- ⑧

Start Box - Cover quick connector
- ⑨

End Box with Sensor - Provide sensor on end
- ⑩

End Cap - Cover hole on the final rail
- ⑪

Track Rail Module - Traditional rail to install track light
- ⑫

Mons-D - Without continuous connection function

Complete Ecosystem



Track Rail Module



Luminaire (4ft)



Luminaire (5ft)



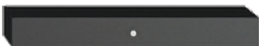
Emergency Module



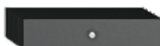
End Feed with Sensor



End Box with Sensor



Start Feed with Sensor



Start Box with Sensor

Luminaire Module



L Type Connector (4ft)



Luminaire (4ft)



Luminaire (5ft)

Accessories & Functional Parts

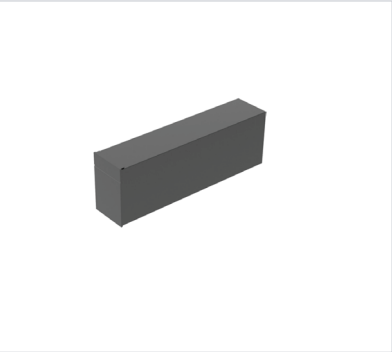
Mons-D, Mons-D Honeycomb & Mons-D Micro Prismatic

Midfeed
4ft; MAR22MF-7 / 5ft; MAR25MF-7



- Size: L618 x W50 x H75mm
- Live Mid with 7 cores wire

Start Box
4ft; MAR22SB / 5ft; MAR25SB



- Size: L230 x W50 x H75mm

Start Feed
4ft; MAR22SF-7 / 5ft; MAR25SF-7



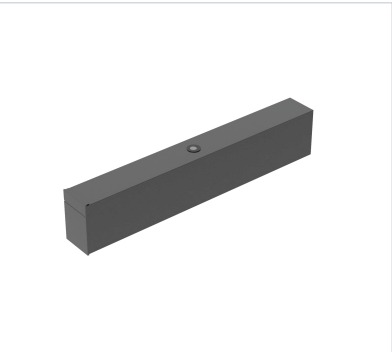
- Size: L302 x W50 x H75mm
- Live Start with 7 cores wire

End Feed
4ft; MAR22EF-7 / 5ft; MAR25EF-7



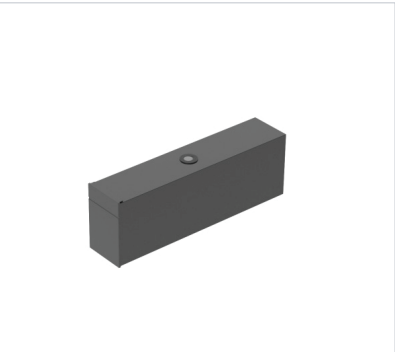
- Size: L92 x W50 x H75mm
- Live End with 7 cores wire

Start Feed with Sensor
4ft; MAR22SF-S-7 / 5ft; MAR25SF-S-7



- Size: L302 x W50 x H75mm
- Live Start with 7 cores wire and sensor

Start Box with Sensor
4ft; MAR22SB-S / 5ft; MAR25SB-S



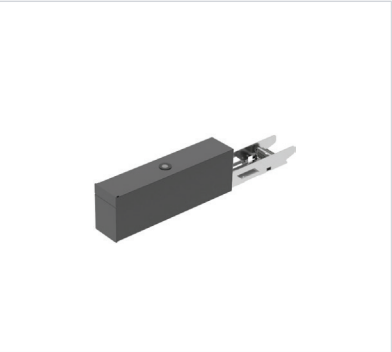
- Size: L230 x W50 x H75mm

Mid Feed with Sensor
4ft; MAR22MF-S-7 / 5ft; MAR25MF-S-7



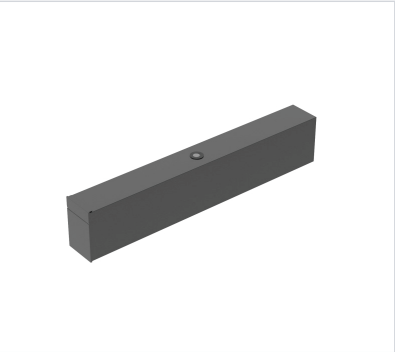
- Size: L618 x W50 x H75mm
- Live Mid with 7 cores wire and sensor

End Feed with Sensor
4ft; MAR22EF-S-7 / 5ft; MAR25EF-S-7



- Size: L92 x W50 x H75mm
- Live End with 7 cores wire and sensor

End Box with Sensor
4ft; MAR22EB-S / 5ft; MAR25EB-S



- Size: L92 x W50 x H75mm

Accessories & Functional Parts

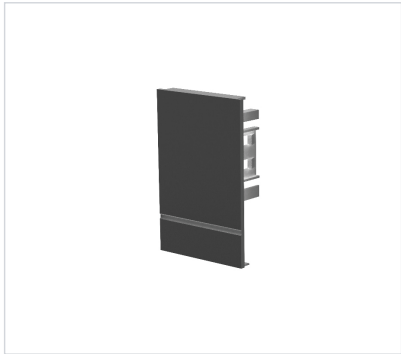
Mons-D, Mons-D Honeycomb & Mons-D Micro Prismatic

Emergency Module
4ft; MAR22EM-7 / 5ft; MAR25EM-7



- Size: L1127 x W50 x H75
- Emergency Module with 7 cores wire 4ft

End Cap
4ft; MAR22EC / 5ft; MAR25EC



- Size: L2.5 x W50 x H75mm

Blank Cover
4ft; MAR22CO / 5ft; MAR25CO



- Size 4ft: 1127mm x H75mm
- Size 5ft: 1408mm x H75mm

Track Rail Module
4ft; MAR22TM-7 / 5ft; MAR25TM-7



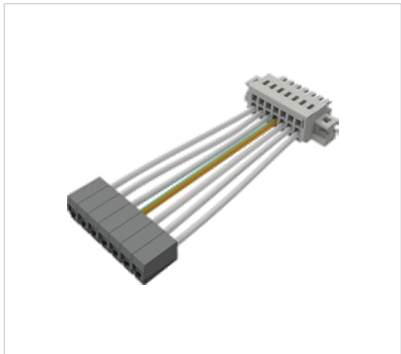
- Size: L1127 x W50 x H75
- 3-Circuit Track Rail Module 7 cores wire 4ft

Suspension Kit
4ft; MAR22SK-3 / 5ft; MAR25SK-3



- Cord length: 3m

Input Terminal Block Female
4ft; MAR22IT-7 / 5ft; MAR25IT-7



- Input Terminal Block Female with 7 cores wire (wire from end)

Surface Mount Clip
4ft; MAR22MC / 5ft; MAR25MC



Accessories & Functional Parts

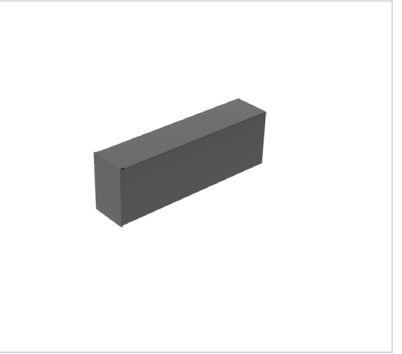
Mons-D Louvre

Midfeed
4ft; MAR22MF-7-L / 5ft; MAR25MF-7-L



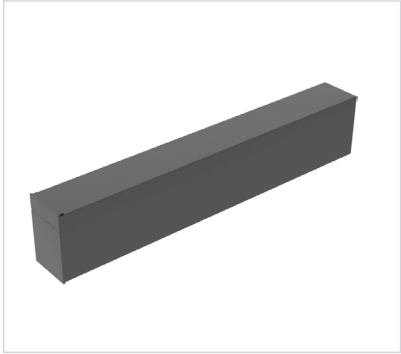
- Size: L618 x W50 x H80mm
- Live Mid with 7 cores wire

Start Box
4ft; MAR22SB-L / 5ft; MAR25SB-L



- Size: L230 x W50 x H80mm

Start Feed
4ft; MAR22SF-7-L / 5ft; MAR25SF-7-L



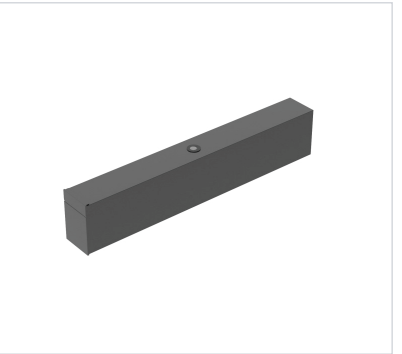
- Size: L302 x W50 x H80mm
- Live Start with 7 cores wire

End Feed
4ft; MAR22EF-7-L / 5ft; MAR25EF-7-L



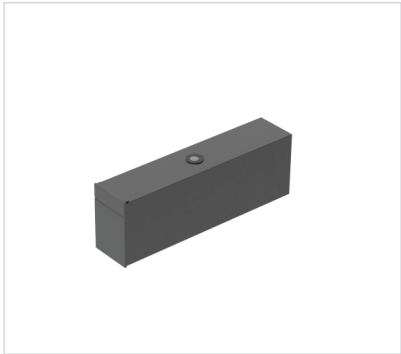
- Size: L92 x W50 x H80mm
- Live End with 7 cores wire

Start Feed with Sensor
4ft; MAR22SF-S-7-L / 5ft; MAR25SF-S-7-L



- Size: L302 x W50 x H80mm
- Live Start with 7 cores wire and sensor

Start Box with Sensor
4ft; MAR22SB-S-L / 5ft; MAR25SB-S-L



- Size: L230 x W50 x H80mm

Mid Feed with Sensor
4ft; MAR22MF-S-7-L / 5ft; MAR25MF-S-7-L



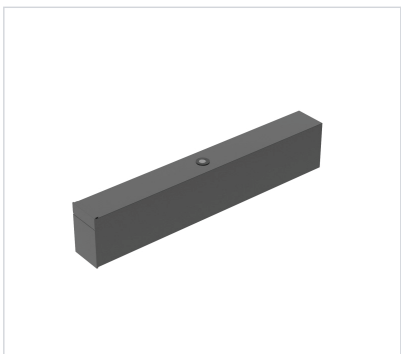
- Size: L618 x W50 x H80mm
- Live Mid with 7 cores wire and sensor

End Feed with Sensor
4ft; MAR22EF-S-7-L / 5ft; MAR25EF-S-7-L



- Size: L92 x W50 x H80mm
- Live End with 7 cores wire and sensor

End Box with Sensor
4ft; MAR22EB-S-L / 5ft; MAR25EB-S-L



- Size: L92 x W50 x H80mm

Accessories & Functional Parts

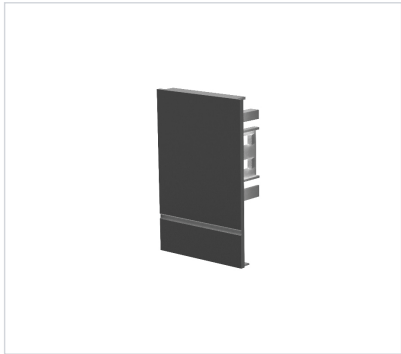
Mons-D Louvre

Emergency Module
4ft; MAR22EM-7-L / 5ft; MAR25EM-7-L



- Size: L1127 x W50 x H80
- Emergency Module with 7 cores wire 4ft

End Cap
4ft; MAR22EC-L / 5ft; MAR25EC



- Size: L2.5 x W50 x H80mm

Blank Cover
4ft; MAR22CO-L / 5ft; MAR25CO-L



- Size 4ft: 1127mm x H80mm
- Size 5ft: 1408mm x H80mm

Track Rail Module
4ft; MAR22TM-7-L / 5ft; MAR25TM-7-L



- Size: L1127 x W50 x H80
- 3-Circuit Track Rail Module 7 cores wire 4ft

Suspension Kit
4ft; MAR22SK-3 / 5ft; MAR25SK-3



- Cord length: 3m

Input Terminal Block Female
4ft; MAR22IT-7 / 5ft; MAR25IT-7



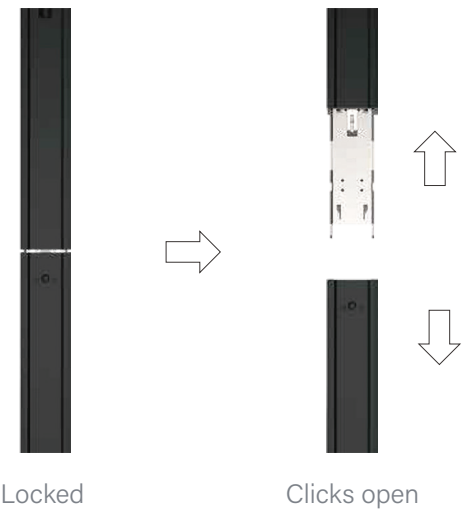
- Input Terminal Block Female with 7 cores wire (wire from end)

Surface Mount Clip
4ft; MAR22MC / 5ft; MAR25MC



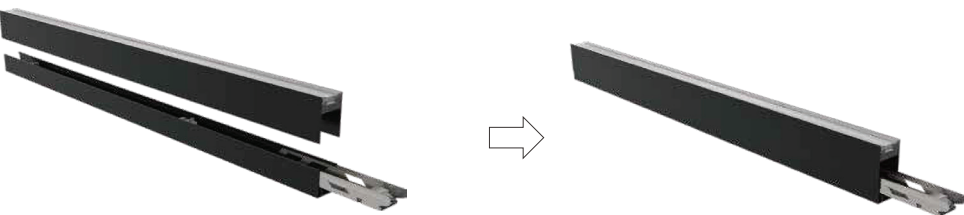
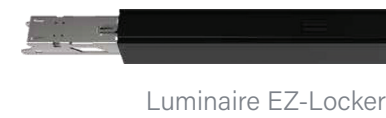
Easy Installation

Seamless Connection



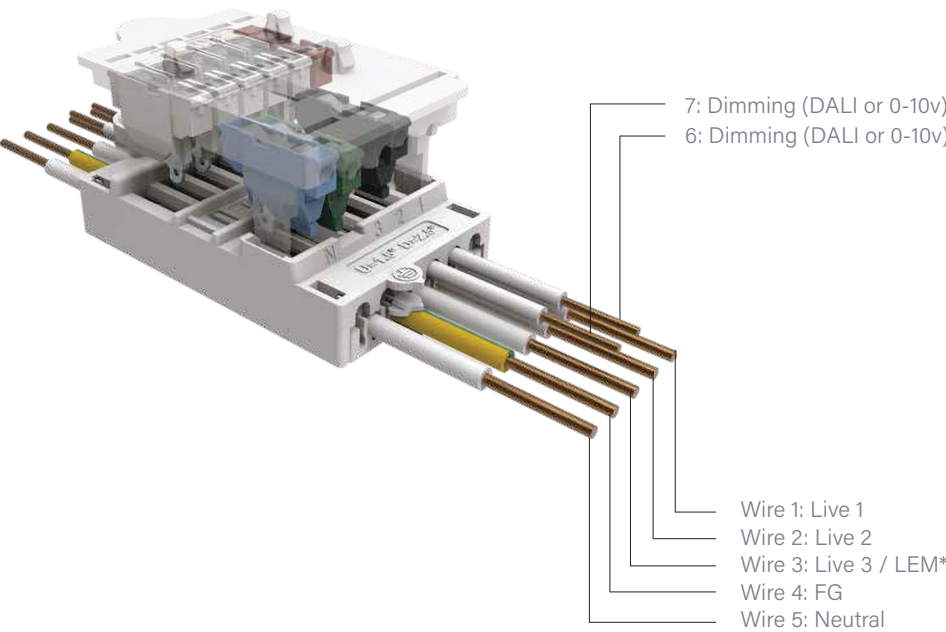
- Seperate trunking rails:
- Easy to connect or disconnect

Clix Structure



Wiring Reference

Prewired Solution



Wire Definition

- ①

Live 1: Phase L1
- ②

Live 2: Phase L2
- ③

Live 3: Phase L3 / LEM*
- ④

FG: Ground Line
- ⑤

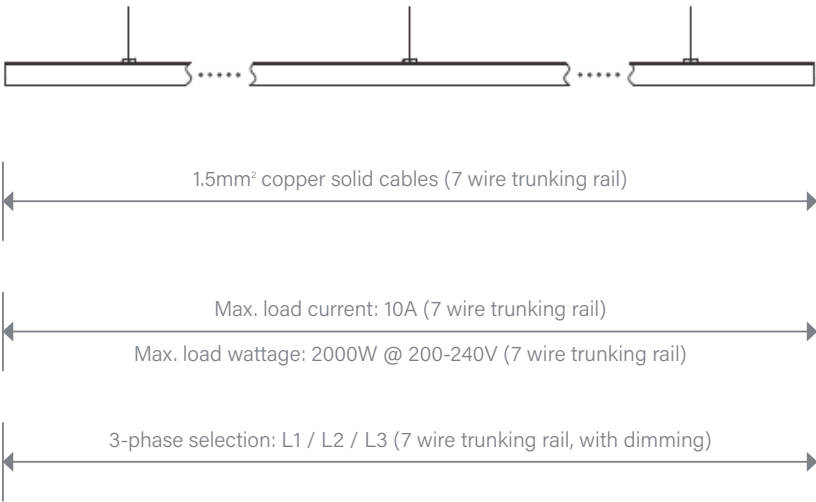
Neutral: Neutral Line
- ⑥

DIM+ / DA1: 0-10v dimming+ / DALI dimming
- ⑦

DIM- / DA2: 0-10v dimming- / DALI dimming

* Permanent Live of the battery emergency.

Installation Reference



Please note that these figures are provided for an estimate and as a typical scenario only.
It is important to consider nominal and inrush currents while selecting the suitable circuit breakers while designing the wiring layout. Please contact Mondolux for these details.

Length of module	Power of module	7 Wire Rail	Max. Length per circuit
4F: 1.13m	21W	77 pcs	87m
	30W	62 pcs	70m
5F: 1.41m	27W	62 pcs	88m
	37W	50 pcs	70m



MONDO**LUX**[™]

1300 601 931

contact@mondolux.com

mondolux.com

Distributed by

aglo[™]

aglosystems.com.au