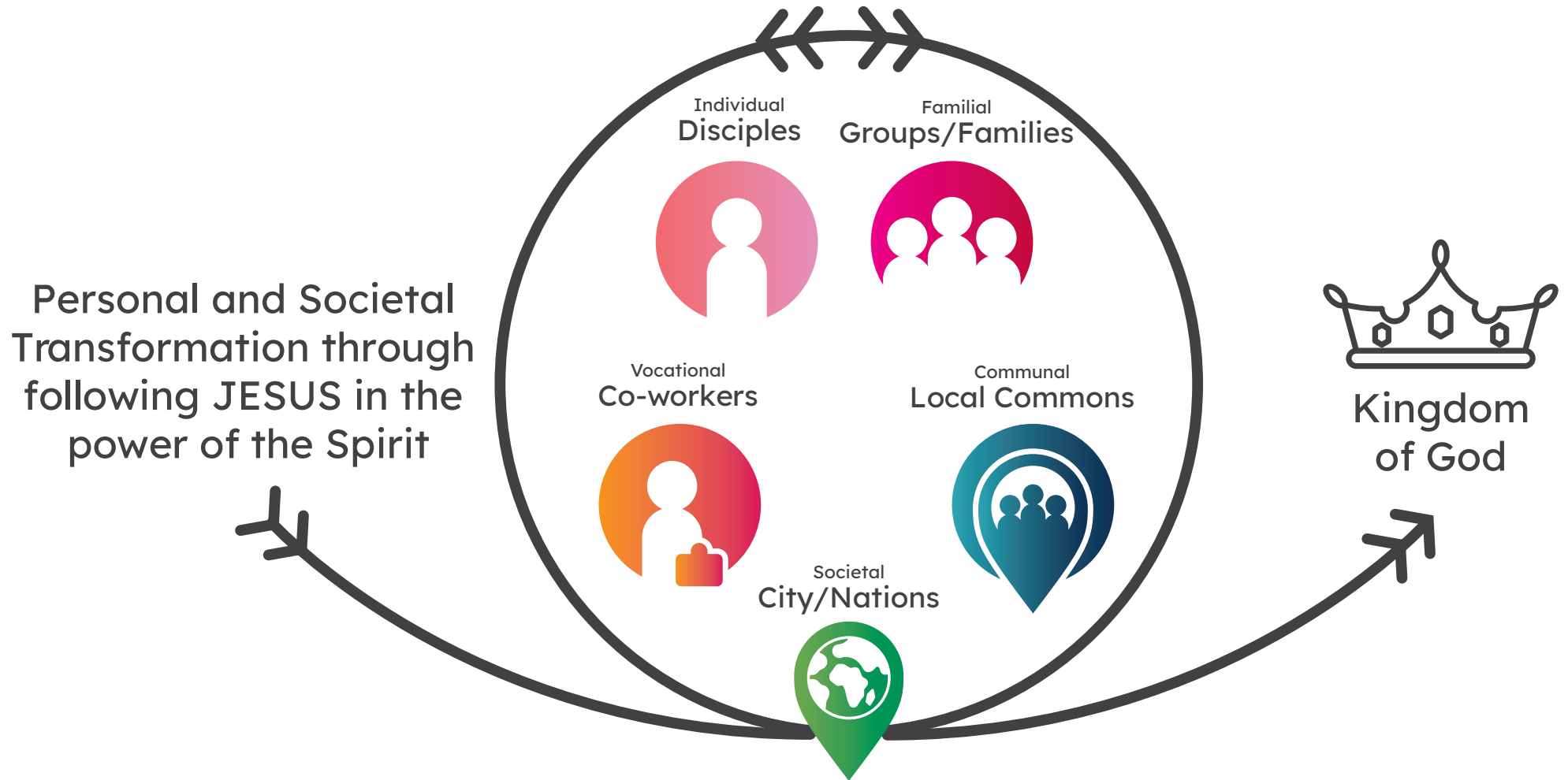


NewHope's Life-giving Relationship Circles



Our Values

People · Growth · Hope

Our 'Way of Life'

We each walk a unique path among different people in dynamic relational networks. But as we follow Jesus wholeheartedly, our WAY OF LIFE is profoundly similar. This is why the early Christians were called 'Followers of The Way' (Acts 9:1, Eph 4:20, 5:2). At NewHope we encourage one another towards **commitments** and **postures** that characterise this 'Jesus Way of Life' and foster life-giving relationships in all five circles. Our paths are dynamic and different, but our behaviour as disciples embodies Jesus' Way of Life.

