



House & Land

# New Plymouth

336 EGMONT ROAD, HILLSBOROUGH

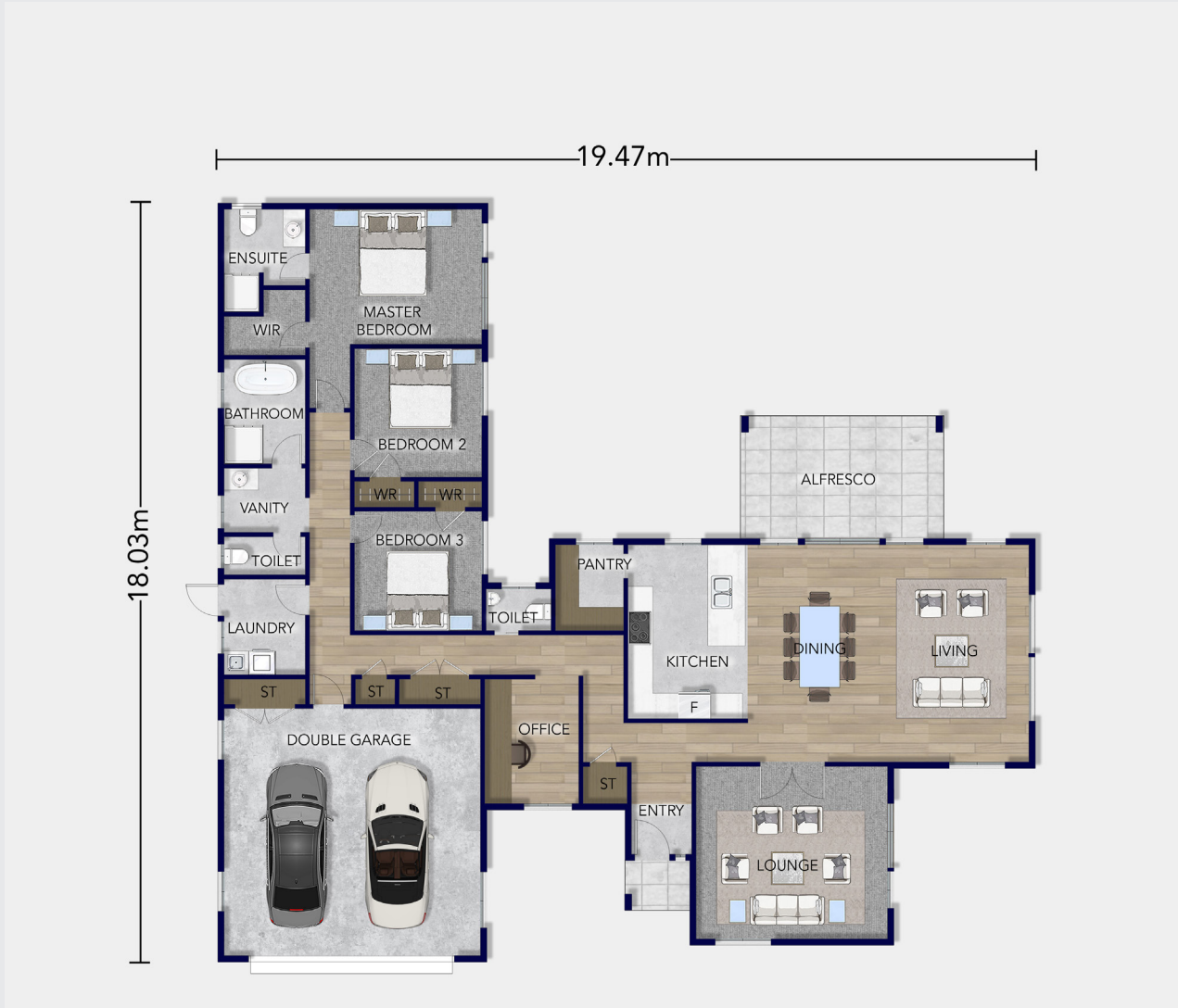
PRICE FROM **\$1,655,000**

Positioned on Lot 1 of this Egmont Road development, this Platinum Homes House and Land Package offers a spacious family home in a peaceful rural setting with mountain views, all within a short drive of New Plymouth. Set on an 8,517sqm section, the property provides space, privacy and flexibility in a desirable location.

 **Platinum  
Homes**™  
*Everything You Call Home*

Total Floor 217m<sup>2</sup>

Section 8517m<sup>2</sup>



Spanning 217sqm, the home has been designed to support practical family living through a combination of open shared spaces and separate retreat areas.

The layout balances functionality and flexibility, making it well suited to modern households. At the centre of the home, the open-plan kitchen, dining and living area creates a practical hub for everyday living and entertaining. A walk-in pantry adds additional storage, while seamless flow to the alfresco area supports easy indoor-outdoor living. A separate lounge provides an additional space to relax or entertain.

Three well-proportioned bedrooms include a private master suite complete with walk-in wardrobe and ensuite. A large office adds flexibility for working from home or study, while the family bathroom, separate WC, double internal access garage, and integrated laundry enhance the home's everyday functionality.

Love this home? Get in touch.

Leah James

021 532 471

leah.james@platinumhomes.co.nz

Dimensions, images and floorplan are indicative only — not to scale.  
Floorplan ©2025 Platinum Homes NZ Ltd — not to be reproduced without permission of the copyright holder.

**Platinum Homes**<sup>TM</sup>  
*Everything You Call Home*