



House & Land Karaka

53 LEWIS ROAD, KARAKA

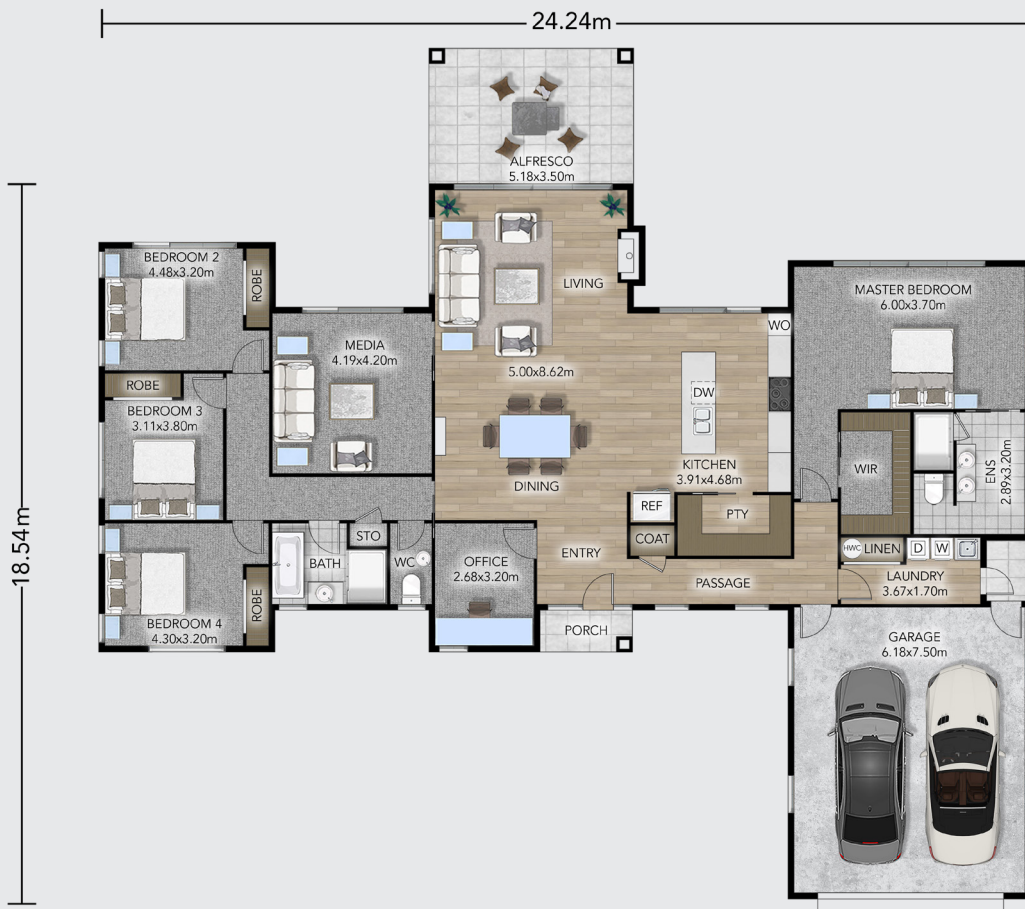
FROM \$2,223,900

Positioned within one of Karaka's sought-after lifestyle areas, this Platinum Homes House and Land Package offers a spacious family home on a 7,131sqm site with flat to gentle contour.

 **Platinum
Homes**™

Total Floor 275m²

Section 7131m²



4



2



2



2



2

Spanning 275sqm, the Cluden plan has been designed to support modern family living with a layout that balances open shared spaces and private retreat areas.

Contemporary detailing and clean architectural lines give the home a timeless street presence. At the centre of the home, the kitchen features a spacious walk-in pantry and connects seamlessly to the dining and living areas, creating a practical hub for everyday living and entertaining. Large openings extend out to the alfresco area, supporting easy indoor-outdoor flow.

Four well-proportioned bedrooms provide flexibility for growing families, including a private master suite complete with walk-in wardrobe and ensuite. A separate media room and dedicated office add versatility, while the separate WC, double internal access garage, and laundry enhance the home's everyday functionality.

Love this home? Get in touch.

Richard Clotworthy

021 889 667

richard.clotworthy@platinumhomes.co.nz

Dimensions, images and floorplan are indicative only — not to scale.
Floorplan ©2025 Platinum Homes NZ Ltd — not to be reproduced without permission of the copyright holder.

**Platinum
Homes**™
Everything You Call Home