



House & Land

Whangarei

LOT 296 - 92 STACE HOPPER DRIVE

FROM: \$1,185,500

Positioned on a generous 776 m² section in the highly sought-after Marsden Cove Development, this dual-dwelling home offers a three-bedroom main residence alongside a fully self-contained one-bedroom unit.

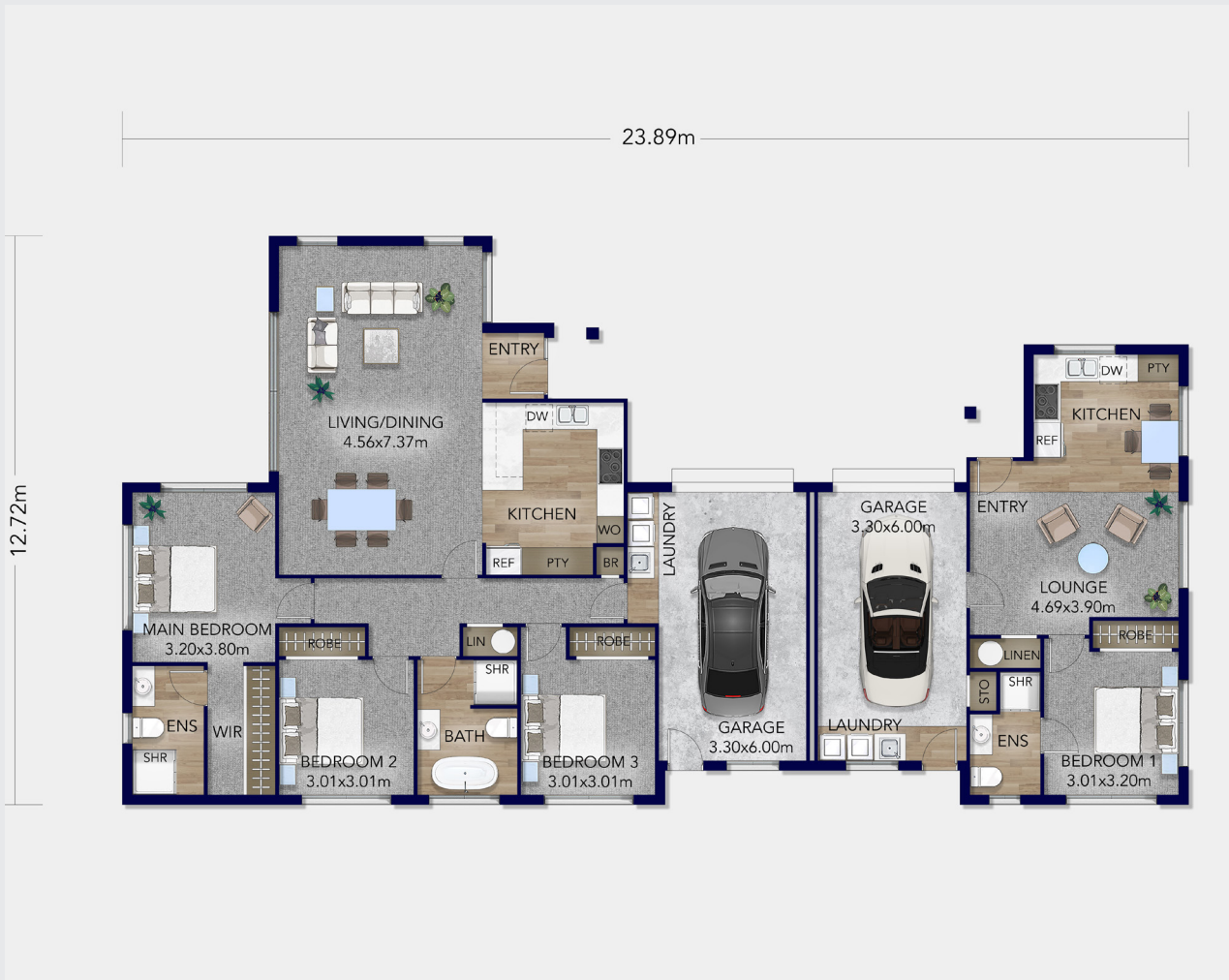
 **Platinum
Homes**™
Everything You Call Home



Total Floor 213m²



Section 776m²



4



2



3



3



2

This contemporary urban-style property is a clever solution for families or investors looking for flexible living or extra income potential.

The section provides plenty of outdoor space for gardening, play, or entertaining, while the design maximises privacy between the main home and the secondary unit.

Step inside the main residence and you'll notice the open-plan layout connecting the kitchen, dining, and living areas. The kitchen, featuring quality appliances, flows seamlessly into the living zones and out to a patio for effortless indoor-outdoor living. The master suite is a private retreat with a walk-in wardrobe and ensuite. A single garage with a laundry completes the layout.

Love this home? Get in touch.

Jeremy Hay

027 583 3323

jeremy.hay@platinumhomes.co.nz

Dimensions, images and floorplan are indicative only — not to scale.
Floorplan ©2025 Platinum Homes NZ Ltd — not to be reproduced without permission of the copyright holder.

**Platinum
Homes™**
Everything You Call Home