



# House & Land Kerikeri

LOT 89 - RANGITANE RIVER PARK

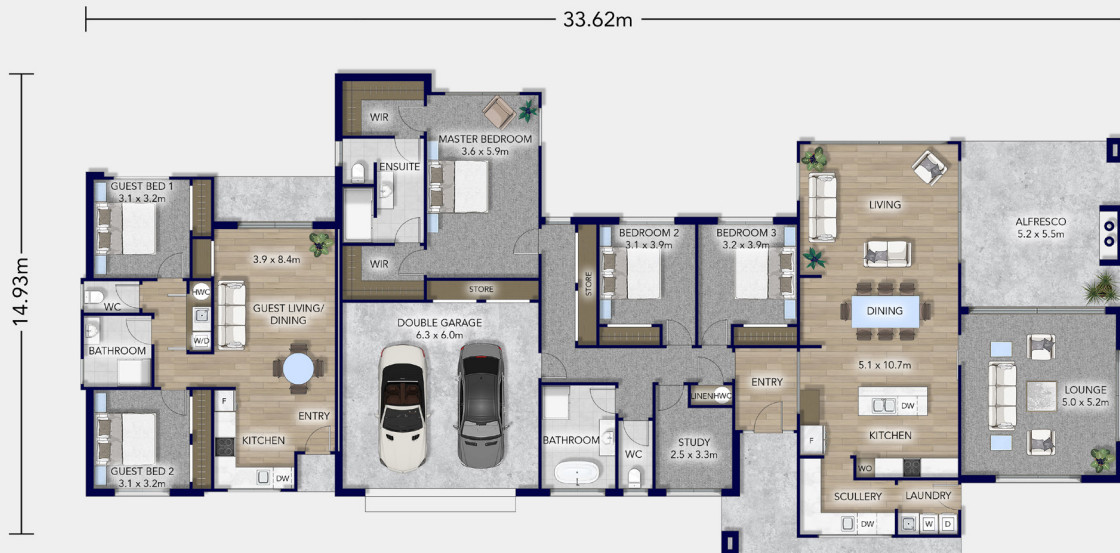
FROM: \$1,792,000

Platinum Homes' Linton design, positioned on Lot 89 within Rangitāne River Park, offers 330sqm of exceptional flexibility, scale and comfort in a peaceful setting along the Rangitāne River, in the heart of the Bay of Islands.

 **Platinum  
Homes**™  
*Everything You Call Home*

 Total Floor 330m<sup>2</sup>

 Section 4299m<sup>2</sup>



Set on a generous 4,299sqm section, this subdivision is known for its spacious sites, full reserve access and tranquil surroundings that support relaxed, modern living.

Designed with versatility in mind, the Linton combines a generous three-bedroom main residence with a fully self-contained two-bedroom dwelling. This configuration provides genuine flexibility for extended family, long-term guests, multi-generational living or additional income potential.

At the heart of the home, the open-plan kitchen, dining and living area connects seamlessly to the covered alfresco space, enhancing indoor-outdoor flow. The entertainer's kitchen includes a stand-alone island, while the expansive scullery provides excellent storage and preparation space and incorporates the integrated laundry, keeping the main kitchen streamlined and functional.

Love this home? Get in touch.

Jeremy Hay  
027 583 3323  
[jeremy.hay@platinumhomes.co.nz](mailto:jeremy.hay@platinumhomes.co.nz)

Dimensions, images and floorplan are indicative only — not to scale.  
Floorplan ©2025 Platinum Homes NZ Ltd — not to be reproduced without permission of the copyright holder.

 **Platinum  
Homes**™  
*Everything You Call Home*