

Plan

# Braeburn



4



2



3



2

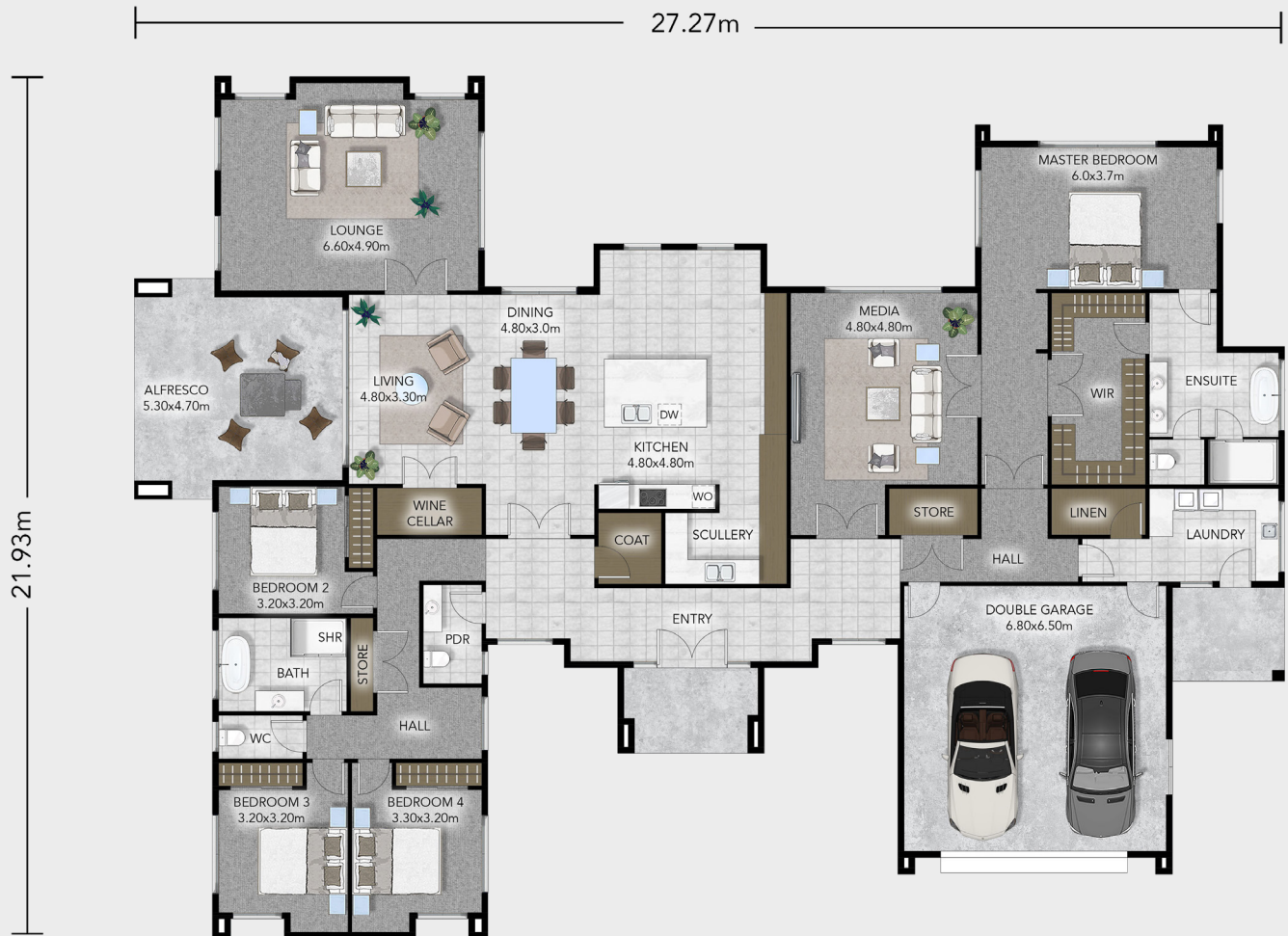


2



# Braeburn Plan

 Total Floor 375m<sup>2</sup>



A substantial single-level home designed for luxurious family living.

Covering 375 sqm, the Braeburn plan offers four bedrooms, including a master suite with walk-in wardrobe and tiled ensuite. A tiled family bathroom and separate WC serve the remaining bedrooms. The kitchen, complete with walk-in pantry, forms the heart of the open dining and living areas, which flow seamlessly to an alfresco space. Additional flexible spaces include a private lounge, and media room, while the double garage and tiled laundry provide everyday convenience.

CONTACT US

**0508 752 846**

[www.platinumhomes.co.nz](http://www.platinumhomes.co.nz)

 **Platinum  
Homes™**

Dimensions, images and floorplan are indicative only — not to scale.  
Floorplan ©2025 Platinum Homes NZ Ltd — not to be reproduced without permission of the copyright holder.