



Plan

Cluden



4



2



2



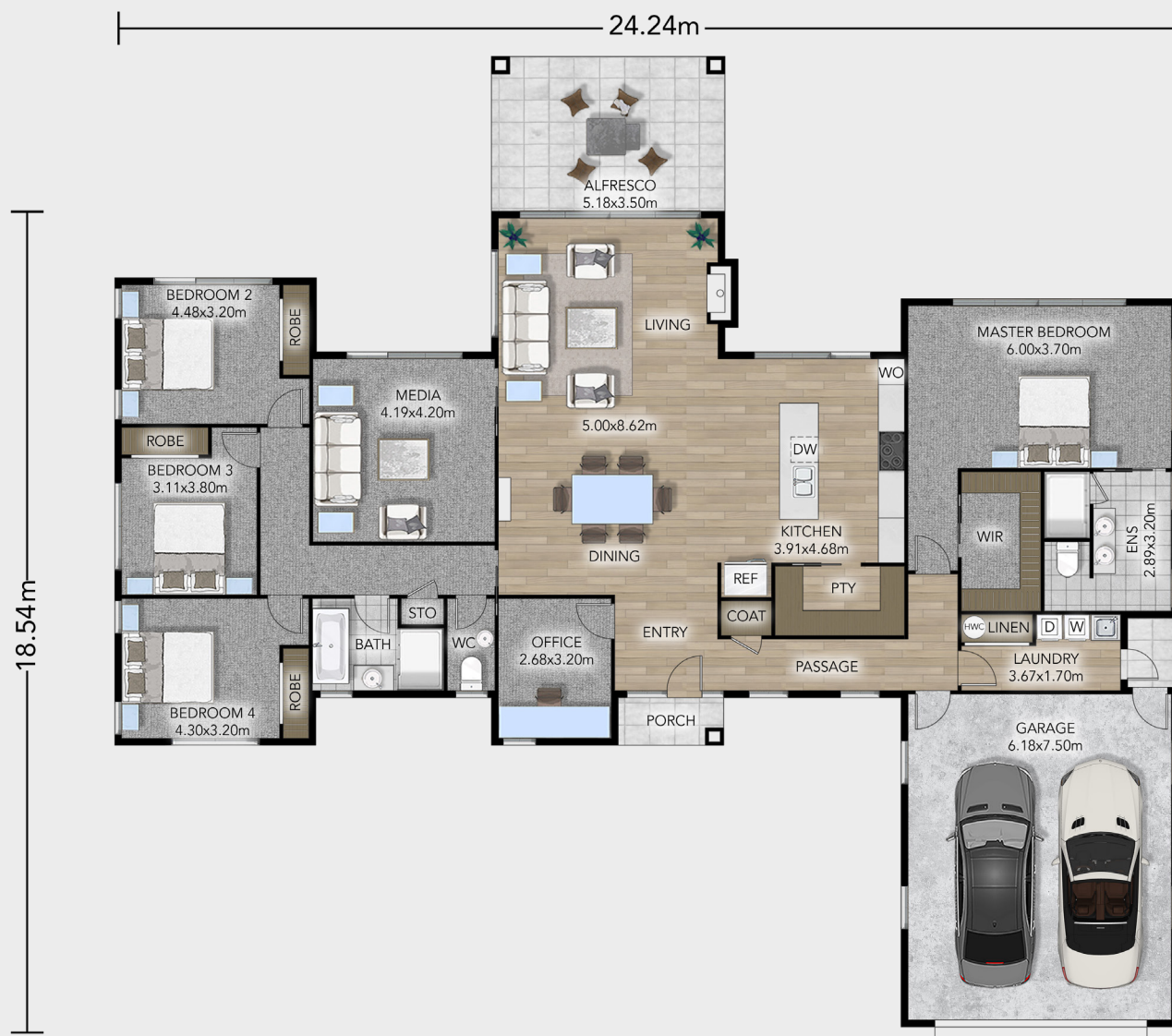
2



2

Cluden Plan

 Total Floor 275m²



Timeless design meets practical family living in this Lifestyle Range home.

At 275 sqm, the Cluden offers four bedrooms, two bathrooms and a separate WC. The master suite has a walk-in wardrobe and ensuite, while the kitchen with a spacious walk-in pantry links to dining and living areas opening to the alfresco space. A media room and office add flexibility, with a double garage and laundry completing the layout.

A modern exterior with brick and timber accents adds strong street presence. This home offers a flexible layout you can adapt to your lifestyle.

CONTACT US

0508 752 846

www.platinumhomes.co.nz

 **Platinum
Homes™**

Dimensions, images and floorplan are indicative only — not to scale.
Floorplan ©2025 Platinum Homes NZ Ltd — not to be reproduced without permission of the copyright holder.