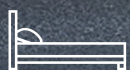




Plan

Fantail



4



2



2



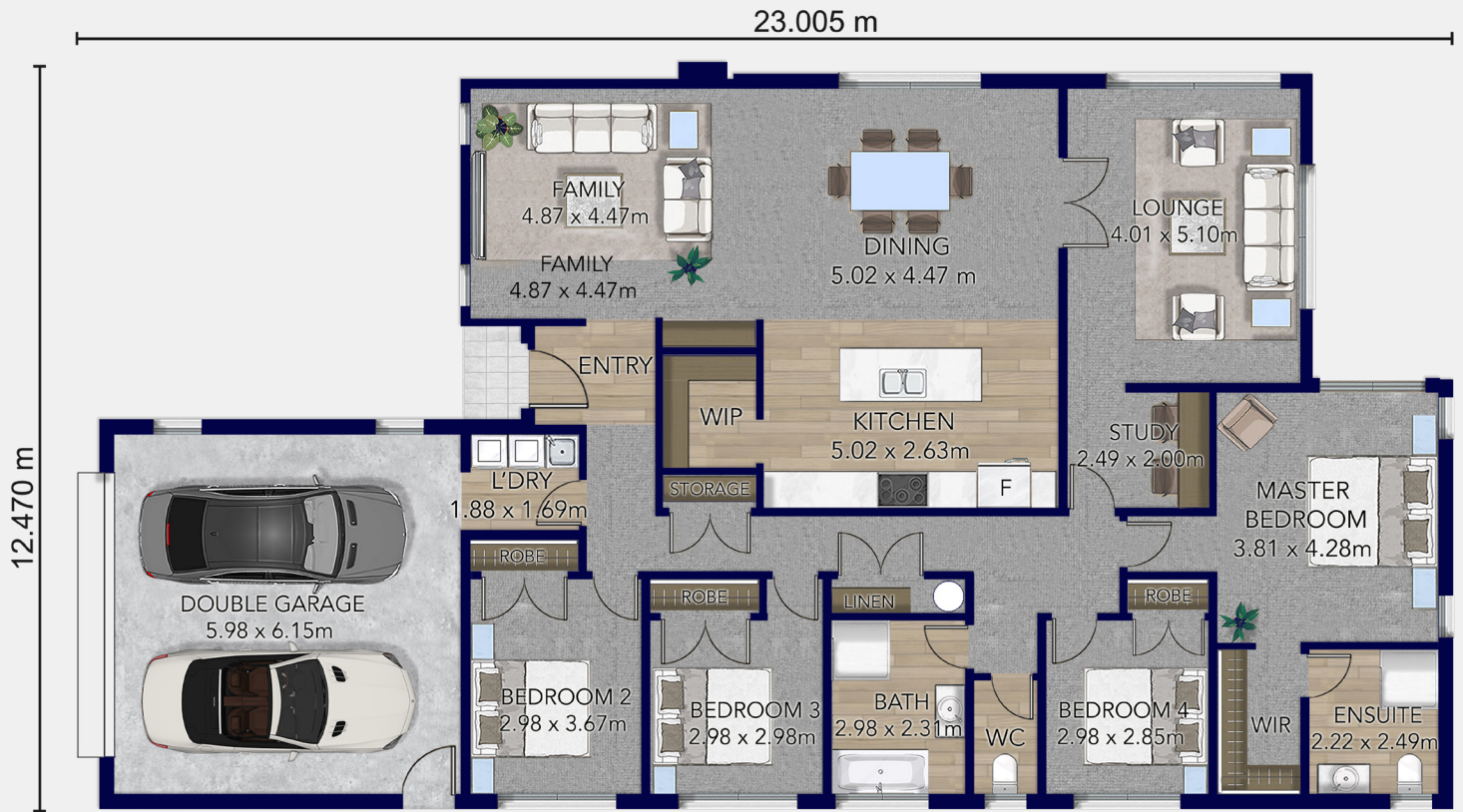
2



2

Fantail Plan

 Total Floor 236m²



The Fantail is a stylish modern home designed for comfortable, efficient family living.

With 236 sqm of smartly planned space, this home features four bedrooms, two bathrooms, and a separate WC to simplify daily routines. Two living areas offer flexible zones for relaxing or entertaining, while the kitchen with walk-in pantry flows into open-plan dining and living, extending to a private alfresco. Sharp lines and simple forms create effective visual interest, balancing great street appeal with practical features like a study and double garage

CONTACT US

0508 752 846

www.platinumhomes.co.nz

 **Platinum
Homes** TM

Dimensions, images and floorplan are indicative only — not to scale.
Floorplan ©2025 Platinum Homes NZ Ltd — not to be reproduced without permission of the copyright holder.