



Plan

Karamea



4



1



2



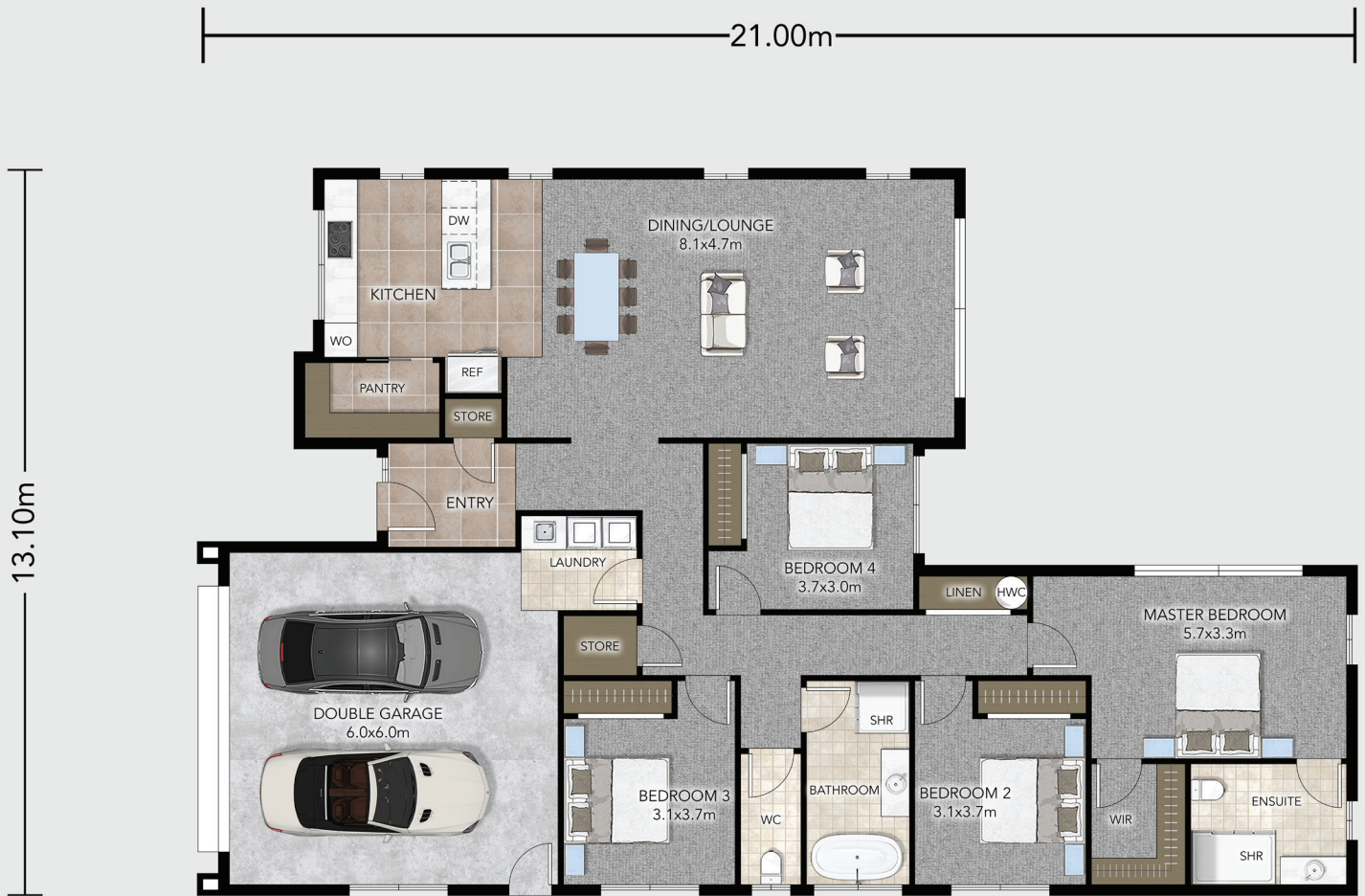
2



2

Karamea Plan

 Total Floor 203m²



This refined urban-style home features strong lines and polished finishes.

At 203 sqm, Karamea offers four bedrooms including a spacious master with ensuite, a family bathroom, and a separate WC for added convenience. The open-plan kitchen with walk-in pantry flows into comfortable living and entertaining spaces. A double garage and clean contemporary details complete this sophisticated family home. With flexible our design options, you can modify our plans to create a home that's truly yours.

CONTACT US

0508 752 846

www.platinumhomes.co.nz

Dimensions, images and floorplan are indicative only — not to scale.
Floorplan ©2025 Platinum Homes NZ Ltd — not to be reproduced without permission of the copyright holder.



**Platinum
Homes**