



Plan

Saddleback



4



1



3



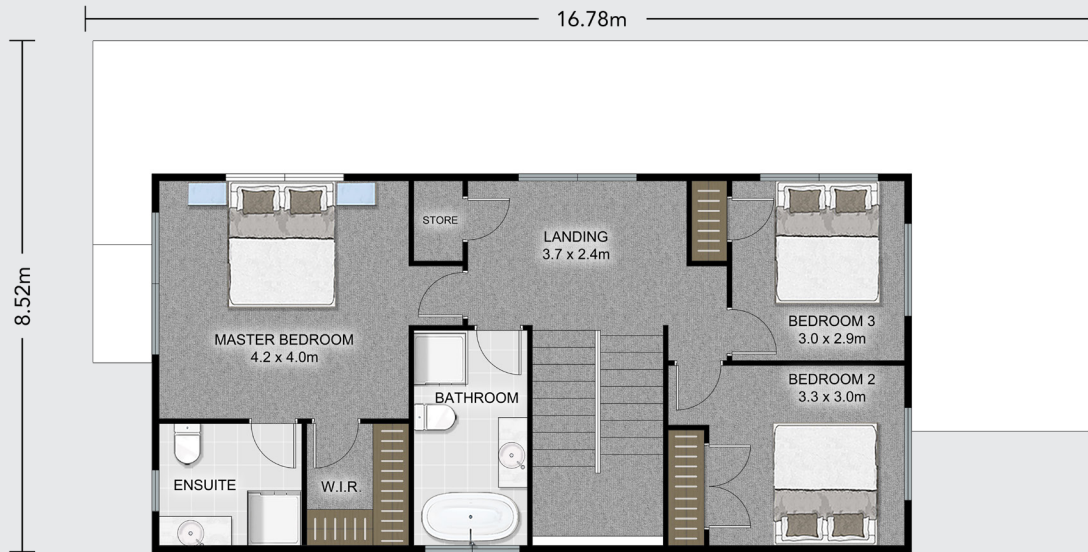
2



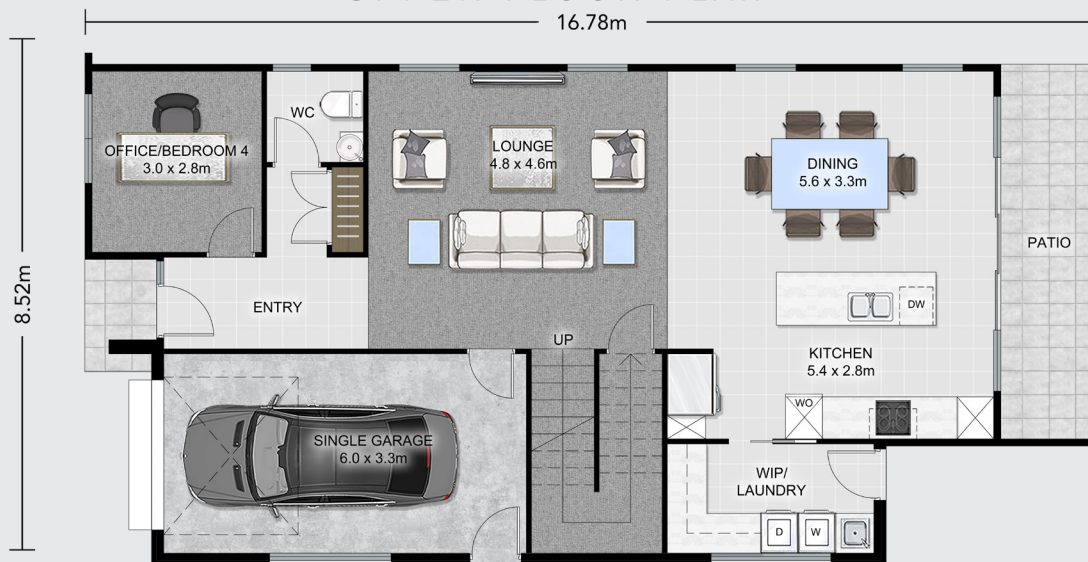
1

Saddleback Plan

 Total Floor 198m²



UPPER FLOOR PLAN



GROUND FLOOR PLAN

The Saddleback is a versatile 198 sqm two-storey home designed for modern family living.

Downstairs includes a fourth bedroom or office, a powder room, lounge, open-plan kitchen with walk-in pantry and laundry, dining area opening to the patio, and a single garage. Upstairs, the master suite features an ensuite and walk-in wardrobe, while two additional bedrooms share a family bathroom. Timber, brick, and vertical cladding combine for a modern exterior.

CONTACT US

0508 752 846

www.platinumhomes.co.nz

 **Platinum
Homes**™

Dimensions, images and floorplan are indicative only — not to scale.
Floorplan ©2025 Platinum Homes NZ Ltd — not to be reproduced without permission of the copyright holder.