

# Selwyn

*Ignite Range*



Total Floor 143m<sup>2</sup>



3



1



2



2



1

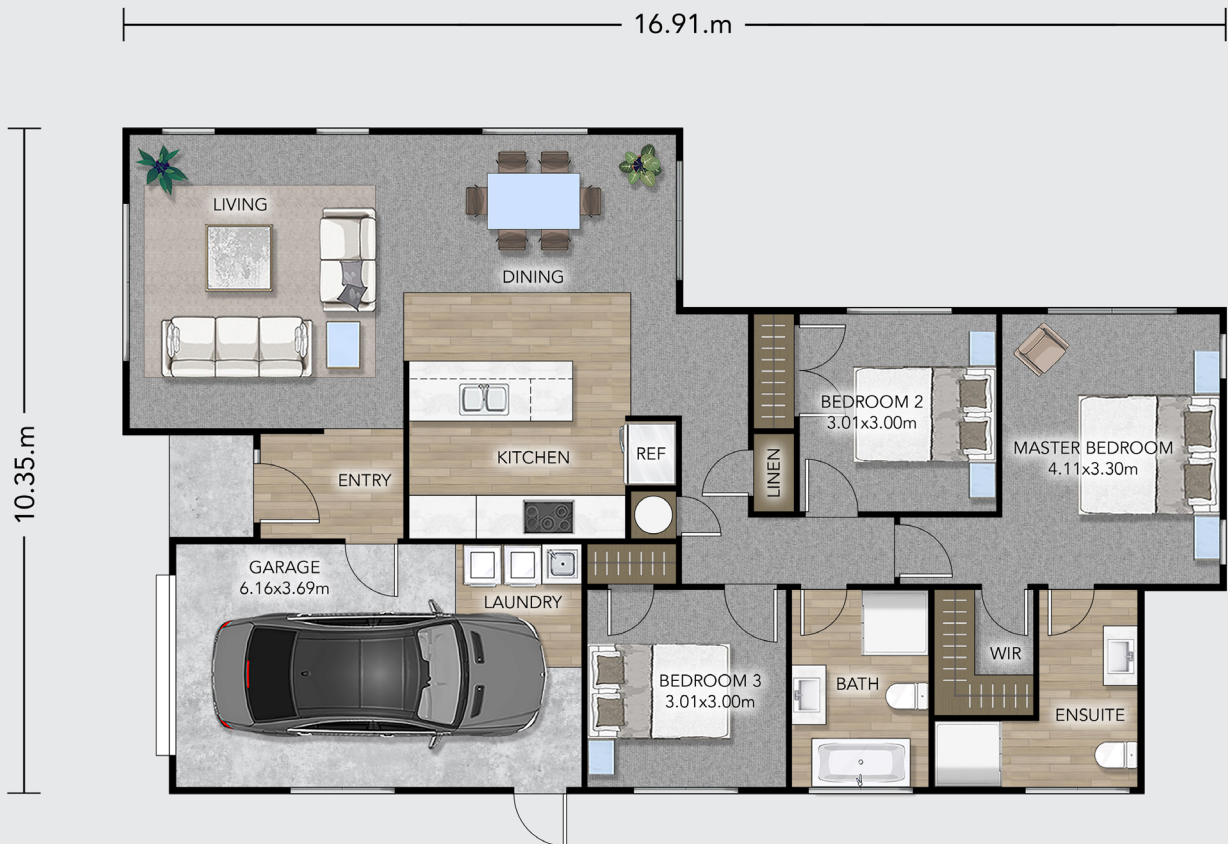
Economically designed for entry-level buyers.  
Crafted to the Platinum Homes standard without  
compromising on quality or style.

At 143m<sup>2</sup>, the Selwyn offers the perfect balance between  
comfort and practicality for growing families or those looking  
to downsize without losing style.

 **Platinum  
Homes**™



# Selwyn Plan



**Priced From \$387,000**

Featuring three spacious bedrooms, two bathrooms, and a thoughtfully laid-out open-plan living area, this home is ideal for both everyday family living and casual entertaining.

The modern HK Kitchen blends effortlessly with the dining and living spaces, ensuring that preparing meals and socialising remain seamlessly connected. An excellent choice for those looking for a home that is as functional as it is stylish.

Terms & Conditions apply. Price includes slab up costs and excludes site-specific costs. Refer to the Fixtures & Fittings document for full details. Construction costs vary in Auckland and Southland regions.

**CONTACT US**

**0508 752 846**

[www.platinumhomes.co.nz](http://www.platinumhomes.co.nz)

**Platinum  
Homes™**

Dimensions, images and floorplan are indicative only — not to scale.  
Floorplan ©2024 Platinum Homes NZ Ltd — not to be reproduced without permission of the copyright holder.