

Wakefield

Ignite Range



Total Floor 237m²



4



2



2



2



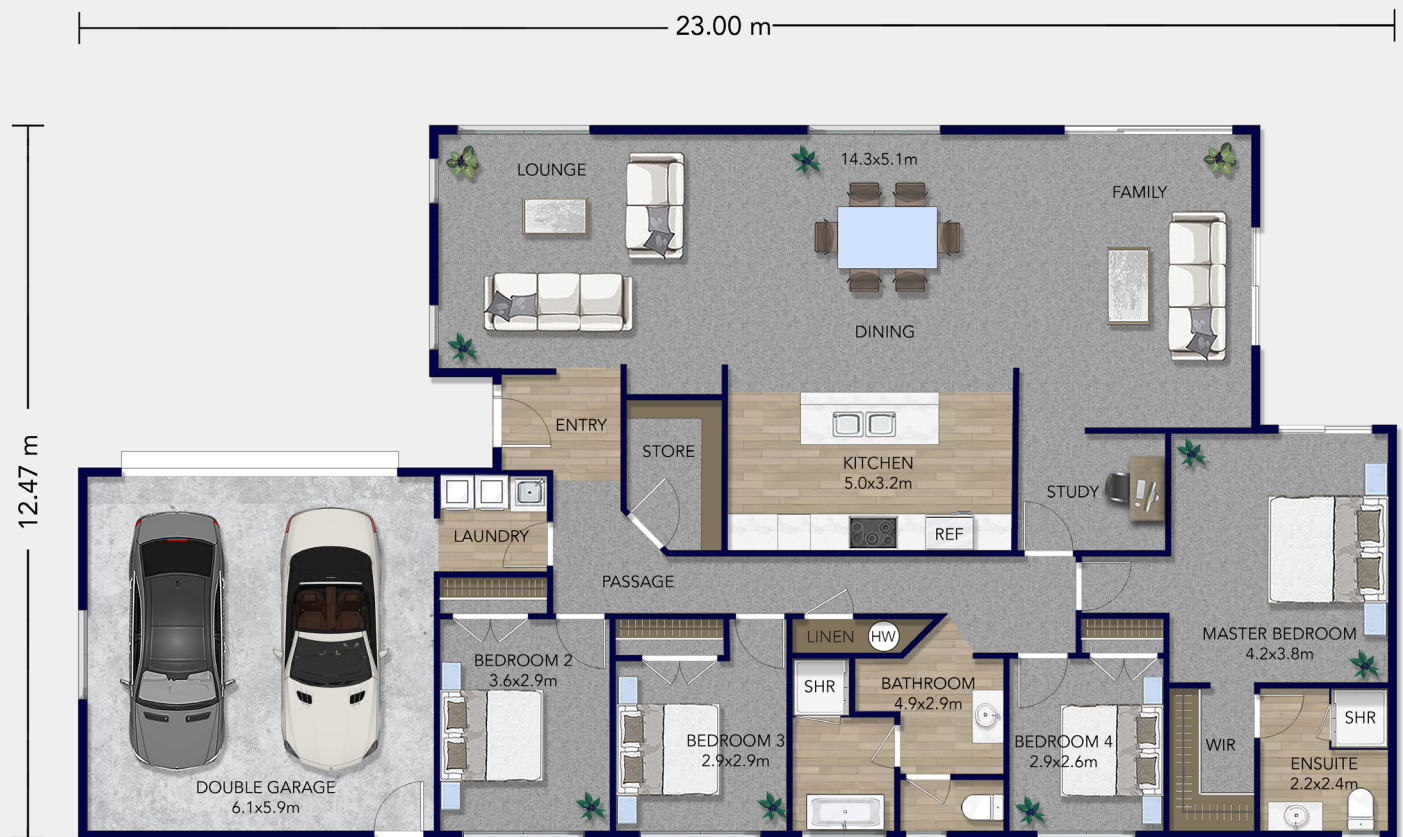
2

Economically designed for entry-level buyers.
Crafted to the Platinum Homes standard
without compromising on quality or style.

Spanning a generous 237m², the Wakefield is designed
for families who value space and functionality.

 **Platinum
Homes**™

Wakefield Plan



Priced From \$525,000

Offering four spacious bedrooms, two bathrooms, and multiple living areas, including a separate lounge and a convenient study nook, this home caters to every member of the family.

The open-plan kitchen, dining, and family area is an entertainer's dream, effortlessly extending to an outdoor living space perfect for hosting friends or enjoying family meals al fresco.

Terms & Conditions apply. Price includes slab up costs and excludes site-specific costs. Refer to the Fixtures & Fittings document for full details. Construction costs vary in Auckland and Southland regions.

CONTACT US

0508 752 846

www.platinumhomes.co.nz

**Platinum
Homes™**

Dimensions, images and floorplan are indicative only — not to scale.
Floorplan ©2024 Platinum Homes NZ Ltd — not to be reproduced without permission of the copyright holder.