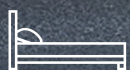




Plan

# Waterford



4



2



2



2

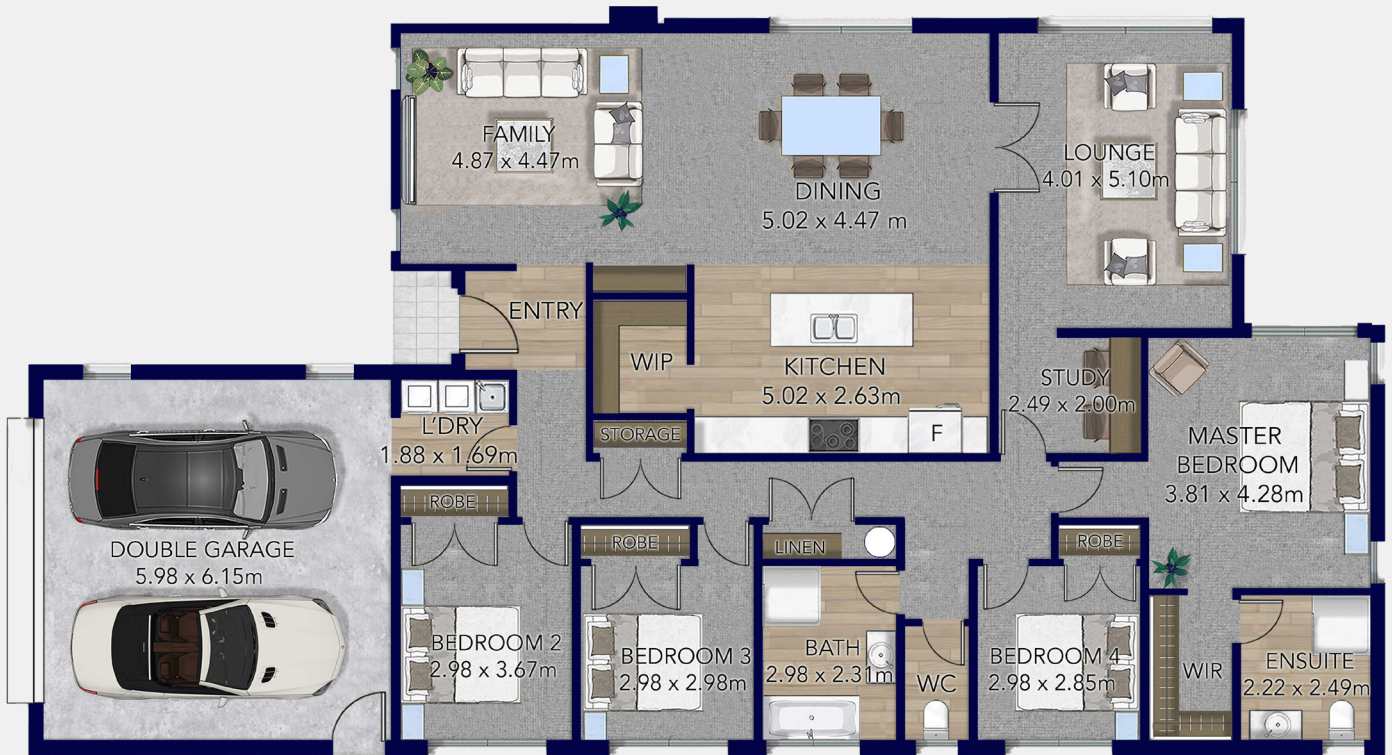


2



# Waterford Plan

 Total Floor 235m<sup>2</sup>



The Waterford is a stylish modern home designed for comfortable, efficient family living.

With 235 sqm of smartly planned space, this home features four bedrooms, two bathrooms, and a separate WC to simplify daily routines. Two living areas offer flexible zones for relaxing or entertaining, while the kitchen with walk-in pantry flows into open-plan dining and living, extending to a private alfresco. Sharp lines and simple forms create effective visual interest, balancing great street appeal with practical features like a study and double garage

CONTACT US

0508 752 846

[www.platinumhomes.co.nz](http://www.platinumhomes.co.nz)

 **Platinum  
Homes**

Dimensions, images and floorplan are indicative only — not to scale.  
Floorplan ©2025 Platinum Homes NZ Ltd — not to be reproduced without permission of the copyright holder.