



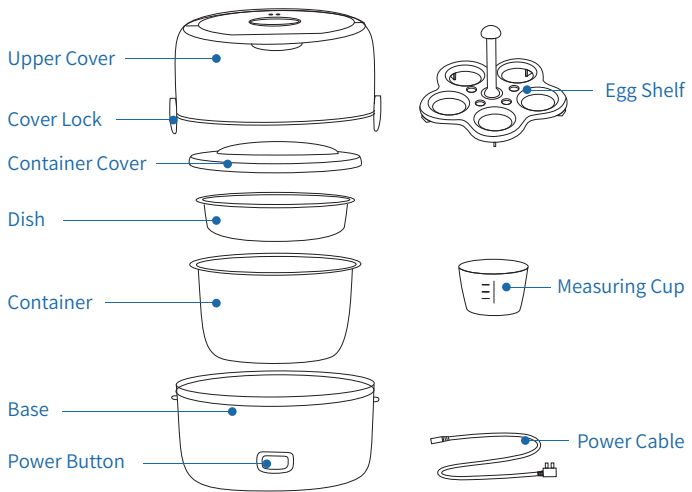
Electric Lunch Box
User Instructions

For
All Haima Electric Lunch Box Models

Please read the manual carefully before use.

Product Specifications and Part Names

●Part Names



1.The appearance of products varies, the above is for reference only.
2.Technical improvements will be compiled into the new manual without notice.

Please do not dispose of this product as general waste! Users should dispose of this product separately from domestic waste after the end of its useful life; it will help save natural resources and reduce environmental pollution. Please follow the handling methods for waste electrical and electronic products in your area.

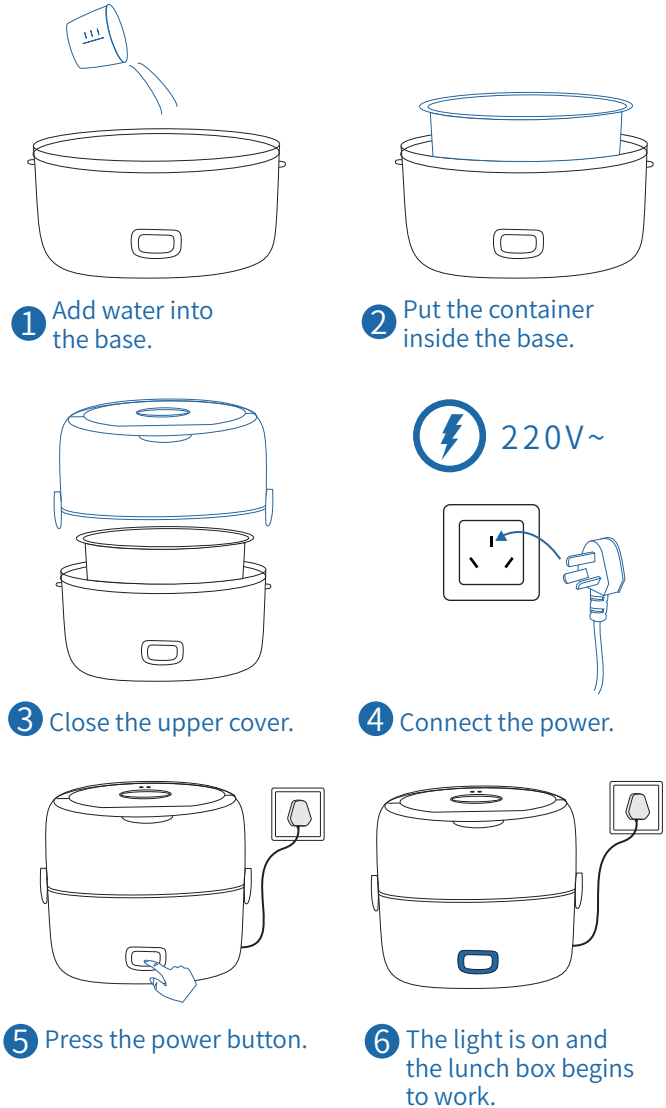
●Product Specifications

Model	Capacity	Voltage/Frequency	Power
HM-2013	1.3L	110V~ 60Hz	200W
HM-2015	1.3L	110V~ 60Hz	200W
HM-2016	1.3L	110V~ 60Hz	200W
HM-2018A	1.6L	110V~ 60Hz	200W

●Working Principle

The products use PTC (ceramic heating element) to heat a small amount of water to produce high-temperature steam. The steam is around the food and cooking ingredients to cook. So soft and delicious food is obtained without loss of nutrition.

●Basic Operation Steps



Cook Rice

- Put a suitable amount of raw rice and water into the container;
- Add a right amount of water into the base(refer to the table);
- put the container into the base and cover the upper cover;
- The machine automatically power off after the water in the base dries, indicator light is off, and rice is fully cooked.

Heat Food

- Put cold food into the container and dish ;
- Add a right amount of water into the base(refer to the table);
- put the container into the base and cover the upper cover;
- The machine automatically power off after the water in the base dries, indicator light is off, and food is warm.

Make Soup and Porridge

- Put food material and appropriate water into the container;
- Add a right amount of water into the base (refer to the table);
- put the container into the base and cover the upper cover;
- The machine automatically power off after the water in the base dries, indicator light is off, and soup/ porridge is ready.

Make Noodle and Dumpling

- Add the right amount of water into the container;
- Add a right amount of water into the base(refer to the table);
- put the container into the base and cover the upper cover;
- The machine automatically power off after the water in the base dries, indicator light is off, and soup/ porridge is ready.

- indicator light is on and the machine begins to work;
- No need to power off, open the upper cover about 15-20 minutes to add the dumplings and other ingredients into the container (take care to avoid water splashes scalds);
 - Cover the upper cover and continue to cook about 5 to 10 minutes, then the food is ready.

Cook Rice

- Put a suitable amount of raw rice and water into the container;
- Add a right amount of water into the base (refer to the table);
- put the container into the base and cover the upper cover;
- The machine automatically power off after the water in the base dries, indicator light is off, and rice is fully cooked.

Heat Food

- Put cold food into the container and dish ;
- Add a right amount of water into the base(refer to the table);
- put the container into the base and cover the upper cover;
- The machine automatically power off after the water in the base dries, indicator light is off, and food is warm.

Make Soup and Porridge

- Put food material and appropriate water into the container;
- Add a right amount of water into the base (refer to the table);
- put the container into the base and cover the upper cover;
- The machine automatically power off after the water in the base dries, indicator light is off, and soup/ porridge is ready.

Make Noodle and Dumpling

- Add the right amount of water into the container;
- Add a right amount of water into the base(refer to the table);
- put the container into the base and cover the upper cover;
- The machine automatically power off after the water in the base dries, indicator light is off, and soup/ porridge is ready.

Make Noodle and Dumpling

- Add the right amount of water into the container;
- Add a right amount of water into the base(refer to the table);
- put the container into the base and cover the upper cover;
- The machine automatically power off after the water in the base dries, indicator light is off, and rice is fully cooked.

Boil Eggs, Heat Steamed Bread, Buns and Dumplings, Steam Corn, Heat Milk and So Forth.

- Put the egg shelf into the base or container, then put the eggs or bread, steamed buns onto the egg shelf ;
- Add a right amount of water into the base (refer to the table);
- put the container into the base and cover the upper cover;
- The machine automatically power off after the water in the base dries, indicator light is off, and food is ready.

Make Soup and Porridge

- Put food material and appropriate water into the container;
- Add a right amount of water into the base (refer to the table);
- put the container into the base and cover the upper cover;
- The machine automatically power off after the water in the base dries, indicator light is off, and soup/ porridge is ready.

Make Noodle and Dumpling

- Add the right amount of water into the container;
- Add a right amount of water into the base(refer to the table);
- put the container into the base and cover the upper cover;
- The machine automatically power off after the water in the base dries, indicator light is off, and soup/ porridge is ready.

1.When using this product for the first time, be sure to clean the stainless steel container and dish with a cotton cloth, especially the edges. This will clean the stains on the surface of stainless steel products, and then cook the container and the dish for about 20 minutes to reach the disinfection effect. Then scrub the container and dish, so they can be used for diet.

2.Please do not touch the lunch box with your hands during cooking to avoid burns. Do not approach the steam outlet to avoid burns. Do not cover the container cover during cooking otherwise it is difficult to open.

3.You can control the food maturity by the amount of water in the base or the cooking time, please refer to the table. When cooking rice, due to different water absorption of different rice, water/ rice proportion can be adjusted according to the actual situation.

4.The table if for reference only, you can adjust according to personal experience. A cup of water is 60ml and 1 cup of rice is about 75g.

Clean and Maintenance

- Make sure that the power plug is disconnected from the socket and the base is cooled down.
- In order to extend the life of the lunch box, the sediment of the base should be regularly cleaned.
- The scale is serious, please repeat the descaling operation.
- Long-term non-use, please unplug the power plug, and keep it from moisture, dust and pests.
- Never use wire balls or any chemical/ abrasive powder cleaner.

- After use, please unplug the power plug from the power socket in time.
- Containers, dishes, covers and other auxiliary tools can be cleaned with detergent and. Please do not use hard wire cleaning, so as not to damage the surface.

- When the body is dirty, wipe with a wet towel. Please do not put the body into the water to clean, so as to avoid leakage and failure.
- Due to the water quality in Singapore, hard water will produce scale under long-term heating conditions, which will affect the normal heating and aesthetics of the product, although it is harm less to health. Therefore, it is necessary to clean it regularly. You can boil the common white vinegar with double amount of water to clean the scale.
- If the product is not used for a long time, please clean and wipe, and put it into the box, placed in a ventilated and dry place, so as to avoid damp.

Safety Precautions

●Special Tips

In order to ensure the safe use and avoid the harm to you and others and property damage, please be sure to observe the following safety precautions.
This product does not consider the following conditions:
1.used by unaccompanied toddlers or handicapped people
2.The situation of children playing the product.

! Mandatory Contents

- Children, the elderly or the handicapped and those who have no previous experience should use this product under the supervision and guidance. Children should be exposed to the product under supervision to ensure that they do not treat the product as a toy.
- When the base is dry, add water, when not in use, clean or move the lunch box, when the electric lunch box has problems must ensure that the power is disconnected.

- Do not use this product on sloped or unstable worktops and keep it away from heat sources to avoid damage to plastic parts.
- Must be used under rated voltage 220-240V with grounding socket, do not use the universal socket with other appliances at the same time.
- If the power cord is damaged, to avoid danger, it must be made Business, Its maintenance department or similar department to replace professionals.
- Please unplug the cooking box and then add water. The water on the power cord should be wiped off before connecting to the power.
- Do not put the product near the stove , so as to avoid accidents caused by fire.
- Do not use poor quality socket to avoid the risk of fire.

! Precautions

- Before use, check whether the rated voltage of the product nameplate matches the voltage you are using.
- Please use a power supply with a grounding protection to ensure personal safety.
- When used, the product should be placed on a stable platform and placed out of the reach of children.
- Do not use this product on or near the surfaces of objects that are not heat-resistant, such as carpets, plastics, etc. Do not place objects that are easily damaged by steam above the product.
- Do not press the power button too hard, to prevent damage to the power switch.
- If the product appears dry burning situation, please add water into the base or unplug the power plug, and please do not touch the heating plate to prevent burns.
- When used, a large amount of steam will be generated from the steam holes, so be careful of steam burns.

- The machine has overheat protection function. If you need to cook food continuously, before the second cooking the machine must be properly cooled. Do not press the power button until the thermostat reset.
- Do not let the base immersed in the water or let the liquid flow into the base, so as to avoid danger.

! Precautions to Prevent Personal Injury

- Do not operate this product unattended.
- Unplug the power cord while not cooking.
- The table for placement of the product should be cleaned regularly.
- Please keep the product at least 30cm away from other appliances.

Failure Analysis and Treatment

- The lunch box is not heating or the indicator does not light.
 - Power Failure?
 - Whether the power cord is plugged into the socket?
 - Is the power socket turned off?
 - Are the power cord tail and the socket connected tightly?
 - Switch button is pressed?
 - Is there water in the base?
- The lunch box is not heating while the indicator light is on.
 - The product is faulty and contact us for service.
 - The temperature is too low after cooking.
 - Is the working time too short?
 - Is the environmental or food temperature too low?

Environmental List
Toxic and Harmful Substances in the Product

Table for Toxic and Harmful Substances in the Product		Product Name: Electric Lunch Box						
		Toxic and Harmful Substances or Elements						
Part Names		Pb	Hg	Cd	Cr(VI)	PMH	Phthalate	
Measuring Cup	□	□	□	□	□	□	□	
Steamer Grid	□	□	□	□	□	□	□	
Power Cord	□	□	□	□	□	□	□	
Note Label	□	□	□	□	□	□	□	
Container 1	□	□	□	□	□	□	□	
Container 2	□	□	□	□	□	□	□	
Steamer Grid	□	□	□	□	□	□	□	
Egg Shelf	□	□	□	□	□	□	□	
Upper Cover	□	□	□	□	□	□	□	
Middle Shell	□	□	□	□	□	□	□	
Base	□	□	□	□	□	□	□	
Socket	□	□	□	□	□	□	□	
Switch	□	□	□	□	□	□	□	
Heating Plate	□	□	□	□	□	□	□	
Screw 1	□	□	□	□	□	□	□	
Screw 2	□	□	□	□	□	□	□	
Cookpot	□	□	□	□	□	□	□	

□ Means content of the toxic and harmful substances or elements is below requirements of GB/T 26577-2011.
+ Means content of the toxic and harmful substances or elements is above requirements of GB/T 26577-2011.

Warranty Card

●Purchase Information

Name: _____ Hand Phone: _____
Address: _____
Model No.: _____
Purchased From: _____ Date of Purchase: _____
Order No.: _____

●Service Record

Service Date: _____
Product Issue: _____
Process Details: _____
Service Address: _____
Service Contact No.: _____ Service Staff: _____

Please fill in the card in 7 days after you receive the product;
※ Terms and conditions apply.



Zhongshan Haima Electric Appliance Co., Ltd.
No. 45, Tongji East Road, Nantou Town, Zhongshan City, Guangdong Province, China