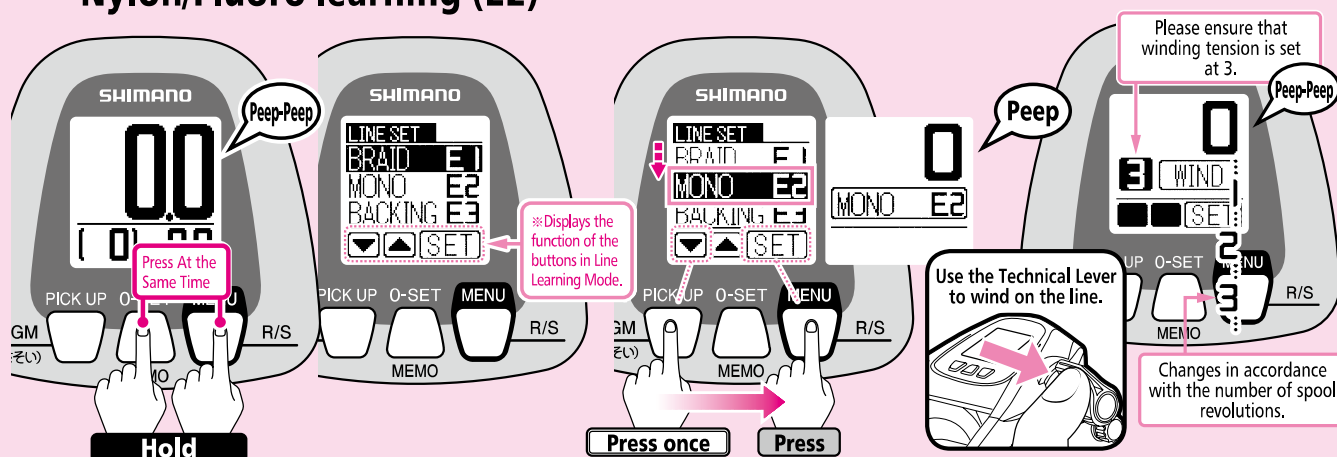


Learning Methods (Inputting the actual value of the line use into the reel.)

2 Simple, convenient NEW SLS III Winding Learning Nylon/Fluoro learning (E2)



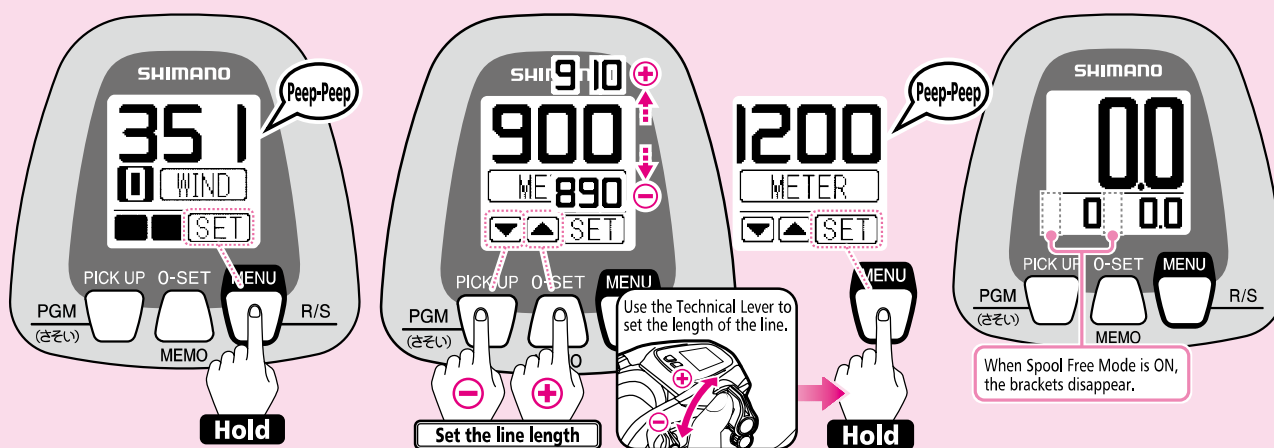
- 1 Carry out this operation if the counter value is 6m or less.
If the value displayed is 6.1m or more, reset the counter. (Refer to pages 37.)
Set the clutch lever to ON.
Then, check that the power supply is connected.
The digital display will show the following.
(When in Standard Mode)
Press the O SET button and the MENU button at the same time for more than 3 seconds to enter Learning Mode.

- 2 The Line Learning Menu appears.
※ The button functions change when in Line Learning Mode, so refer to their functions shown on the bottom row of the display.
Check that Fluoro Learning E2 is selected and press SET.
The display changes to the one shown above.
(See pages 17–18 for details on selecting learning methods.)

- 3 Use the Technical Lever to wind on the line.
A number corresponding to the number of spool revolutions will be displayed.
Operate at a winding tension of 3.
This value indicates the force (line tension) applied for winding the reel as a number. The number does not equal kilograms. In addition, it will differ from the value which appears in Rakuraku Mode.
When winding using the Technical Lever, the speed can be adjusted using the Technical Lever. To stop winding, set the Technical Lever to the "OFF" position.

(Continued on the next page.) →

Caution: The values and settings shown on the reel display in this manual are in some cases just examples. Actual values may differ.



- 4** After completely finishing winding on the line, press the MENU button for more than 3 seconds.
The alarm will sound (peep-peep).

Note:

Do not wind on all of the line. If all of the line is wound on, it will cause an error in the counter value.

- 5** Set the line length using ▼▲ or the Technical Lever and press and hold the MENU button for 3 seconds.
You will hear two short beeps.
※ The default setting is 900m. (The illustration shows a change made from 900m to 1200m.)

When the "NEW SLS III Nylon/Fluoro" Learning Mode (E2) is selected, the "()" will not be displayed.

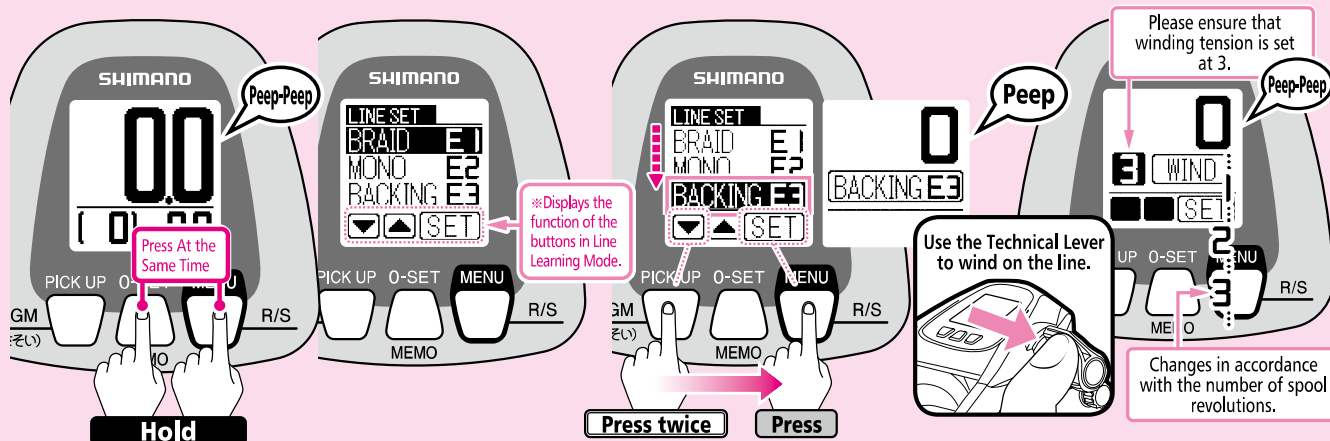
* This indicates that the Gunwale Stop function is operating.

- 6** The display will return to Standard Mode and learning will be complete.
(In some cases there may be as much as a $\pm 3\%$ difference between the counter value and the actual length of the line.)
* This difference is the difference in the first cast made after learning.
* After this when actually fishing, if you think that the difference is too great, carry out Line Learning Adjustment as shown on pages 61. This will enable you to position your rig more accurately.

Learning Methods (Inputting the actual value of the line use into the reel.)

3 Simple, convenient NEW SLS III Winding Learning Backing Line Learning (E3)

There is a mark on the spool showing 50% capacity for backing line. Use this as an estimate when winding on backing line.



- 1** Carry out this operation if the counter value is 6m or less.

If the value displayed is 6.1m or more, reset the counter. (Refer to pages 37.)

Set the clutch lever to ON.

Then, check that the power supply is connected.

The digital display will show the following. (When in Standard Mode)

Press the 0 SET button and the MENU button at the same time for more than 3 seconds to enter Learning Mode.

- 2** The Line Learning Menu appears.

※ The button functions change when in Line Learning Mode, so refer to their functions shown on the bottom row of the display.

Check that Backing Line Learning E3 is selected and press SET.

The display changes to the one shown above. (See pages 17–18 for details on selecting learning methods.)

- 3** Use the Technical Lever to wind on the line.

A number corresponding to the number of spool revolutions will be displayed.

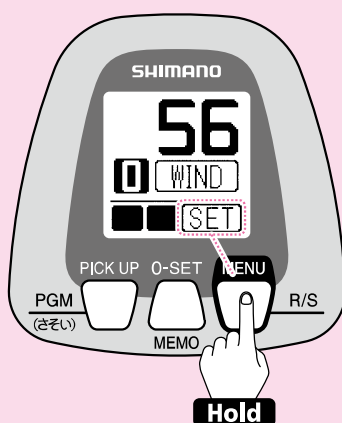
Operate at a winding tension of 3.

This value indicates the force (line tension) applied for winding the reel as a number. The number does not equal kilograms. In addition, it will differ from the value which appears in Rakuraku Mode.

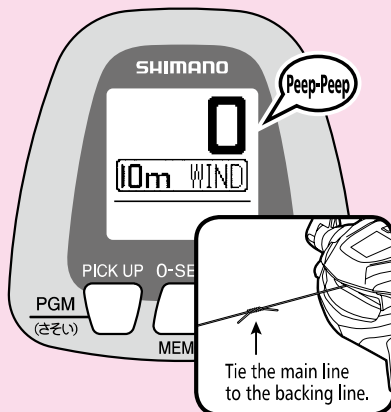
When winding using the Technical Lever, the speed can be adjusted using the Technical Lever. To stop winding, set the Technical Lever to the "OFF" position.

(Continued on the next page.)

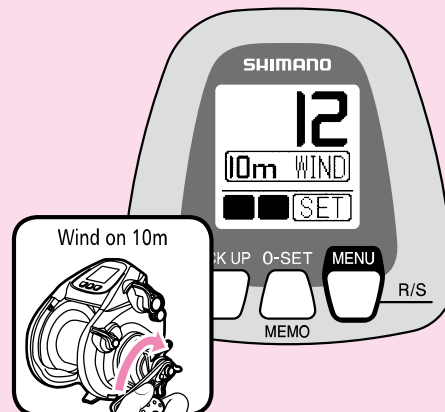
Caution: The values and settings shown on the reel display in this manual are in some cases just examples. Actual values may differ.



- 4** After completely finishing winding on the backing line, press the 0 SET button for more than 3 seconds.

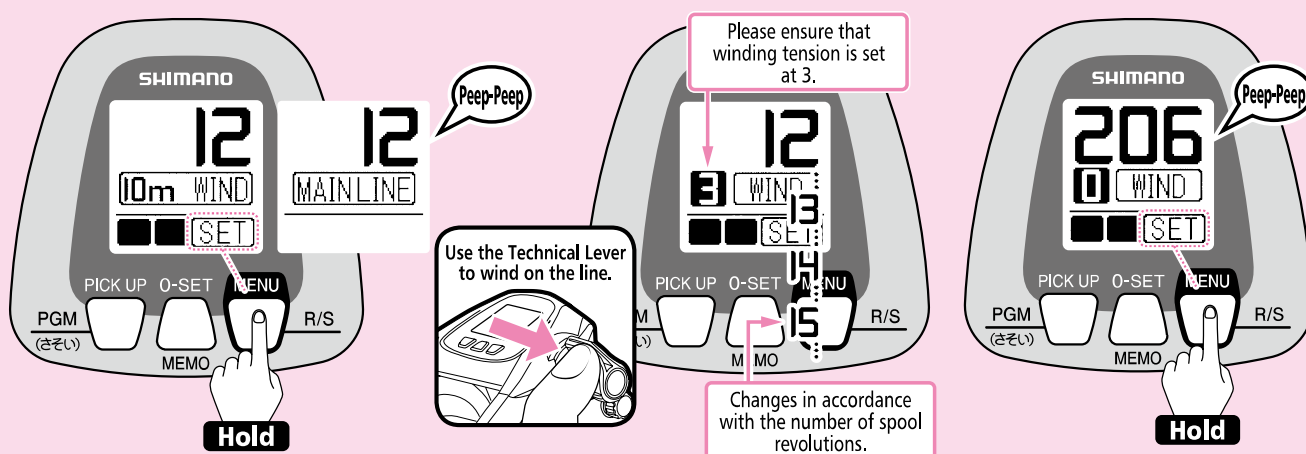


- 5** The alarm will sound (peep-peep) and the display will appear as shown in the diagram. Once winding-on is finished, tie the main line to the backing line.



- 6** Accurately wind on 10m of main line. The display changes in accordance with the number of spool revolutions.

Caution: The values and settings shown on the reel display in this manual are in some cases just examples. Actual values may differ.



- 7** Press the MENU button for more than 3 seconds.
The alarm will sound (peep-peep) and the display will appear as shown in the diagram.

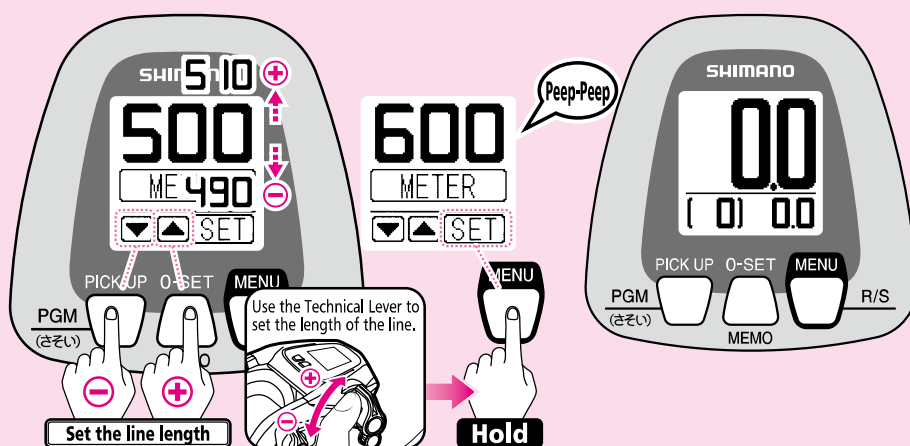
- 8** Use the Technical Lever to wind on the line.
A number corresponding to the number of spool revolutions will be displayed.
Operate at a winding tension of 3.
This value indicates the force (line tension) applied for winding the reel as a number. The number does not equal kilograms. In addition, it will differ from the value which appears in Rakuraku Mode.
When winding using the Technical Lever, the speed can be adjusted using the Technical Lever. To stop winding, set the Technical Lever to the OFF position.

- 9** After completely finishing winding on the line, press the 0 SET button for more than 3 seconds.
The alarm will sound (peep-peep).

Note:
Do not wind on all of the line. If all of the line is wound on, it will cause an error in the counter value.

(Continued on the next page.)

Caution: The values and settings shown on the reel display in this manual are in some cases just examples. Actual values may differ.

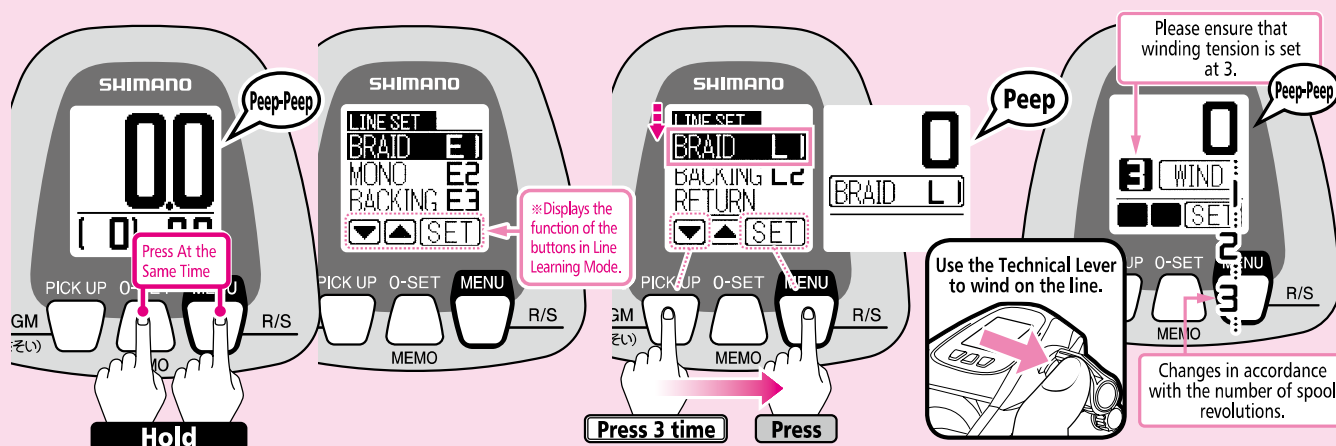


- 10** Use the lever to set the length of the main line, and then press the MENU button for more than 3 seconds.
The alarm will sound (peep-peep).
* The initial setting is 500m. (The diagram shows the setting changed from 500m to 600m.)
* If you accidentally press the MENU button while carrying out an input operation, the data entered up until that point will be lost and you will have to repeat the process once more from the beginning.

- 11** The display will return to Standard Mode and learning will be complete.
(In some cases there may be as much as a $\pm 3\%$ difference between the counter value and the actual length of the line.)
* This difference is the difference in the first cast made after learning.
* After this when actually fishing, if you think that the difference is too great, carry out Line Learning Adjustment as shown on pages 61. This will enable you to position your rig more accurately.

Learning Methods (Inputting the actual value of the line use into the reel.)

4 Conventional SLS II Winding Learning Braided Line Learning (L1)

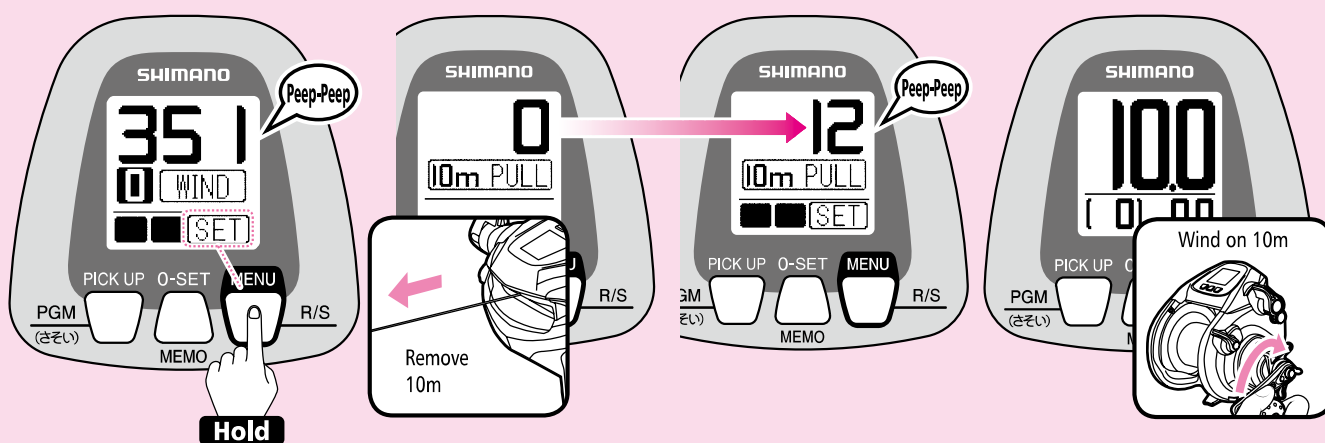


- 1 Carry out this operation if the counter value is 6m or less.
If the value displayed is 6.1m or more, reset the counter. (Refer to pages 37.)
Set the clutch lever to ON.
Then, check that the power supply is connected.
The digital display will show the following.
(When in Standard Mode)
Press the 0 SET button and the MENU button at the same time for more than 3 seconds to enter Learning Mode.

- 2 The Line Learning Menu appears.
※ The button functions change when in Line Learning Mode, so refer to their functions shown on the bottom row of the display.
Check that Braided Line Learning L1 is selected and press SET.
The display changes to the one shown above.
(See pages 17–18 for details on selecting learning methods.)

- 3 Use the Technical Lever to wind on the line.
A number corresponding to the number of spool revolutions will be displayed.
Operate at a winding tension of 3.
This value indicates the force (line tension) applied for winding the reel as a number. The number does not equal kilograms. In addition, it will differ from the value which appears in Rakuraku Mode.
When winding using the Technical Lever, the speed can be adjusted using the Technical Lever. To stop winding, set the Technical Lever to the "OFF" position.
(Continued on the next page.)

Caution: The values and settings shown on the reel display in this manual are in some cases just examples. Actual values may differ.



- 4** After completely finishing winding on the line, press the MENU button for more than 3 seconds.
The alarm will sound (peep-peep).

Note:

Do not wind on all of the line. If all of the line is wound on, it will cause an error in the counter value.

- 5** Accurately pull out 10m of line. (Check the changes in colour every 10m, or the number of marks occurring every 1m.)
To finish learning, press the MENU button for more than 3 seconds.
The alarm will sound (peep-peep).

- 6** The display will return to Standard Mode and learning will be complete.

(In some cases there may be as much as a $\pm 3\%$ difference between the counter value and the actual length of the line.)

* This difference is the difference in the first cast made after learning.

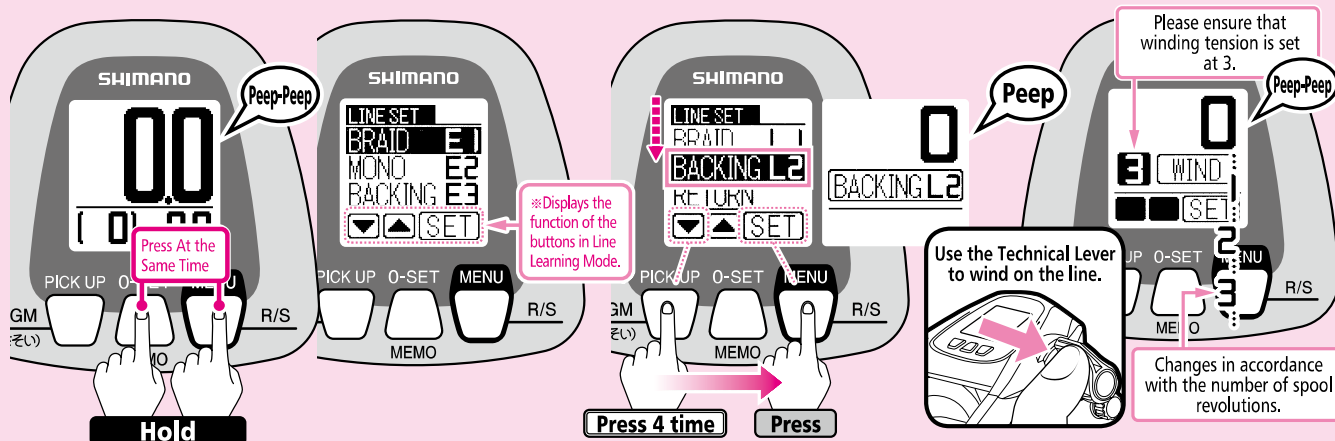
* After this when actually fishing, if you think that the difference is too great, carry out Line Learning Adjustment as shown on pages 61. This will enable you to position your rig more accurately.

- 7** Wind on the 10m of line that was pulled out.

Learning Methods (Inputting the actual value of the line use into the reel.)

5 Conventional SLS II Backing Line Learning (L2)

There is a mark on the spool showing 50% capacity for backing line. Use this as an estimate when winding on backing line.



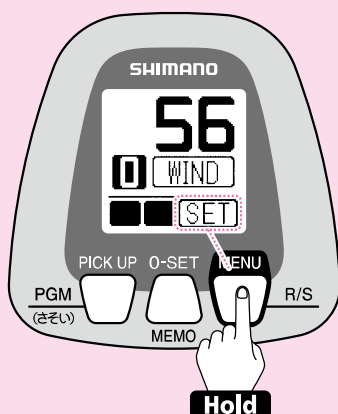
- 1 Carry out this operation if the counter value is 6m or less.
If the value displayed is 6.1m or more, reset the counter. (Refer to pages 37.)
Set the clutch lever to ON.
Then, check that the power supply is connected.
The digital display will show the following.
(When in Standard Mode)

- 2 The Line Learning Menu appears.
※ The button functions change when in Line Learning Mode, so refer to their functions shown on the bottom row of the display.
Check that Braided Line Learning L2 is selected and press SET.
The display changes to the one shown above.
(See pages 17–18 for details on selecting learning methods.)

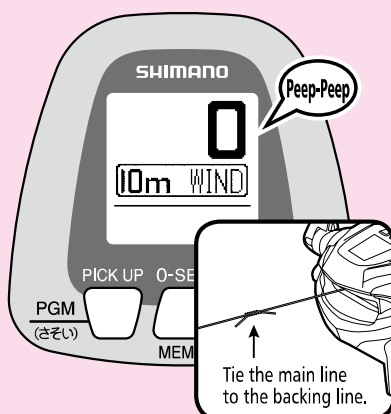
- 3 Use the Technical Lever to wind on the line.
A number corresponding to the number of spool revolutions will be displayed.
Operate at a winding tension of 3.
This value indicates the force (line tension) applied for winding the reel as a number. The number does not equal kilograms. In addition, it will differ from the value which appears in Rakuraku Mode.
When winding using the Technical Lever, the speed can be adjusted using the Technical Lever. To stop winding, set the Technical Lever to the "OFF" position.

(Continued on the next page.)

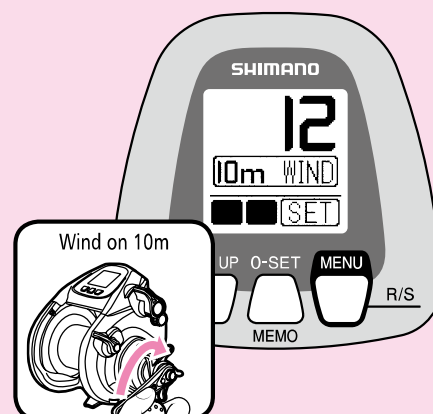
Caution: The values and settings shown on the reel display in this manual are in some cases just examples. Actual values may differ.



- 4** After completely finishing winding on the backing line, press the MENU button for more than 3 seconds.

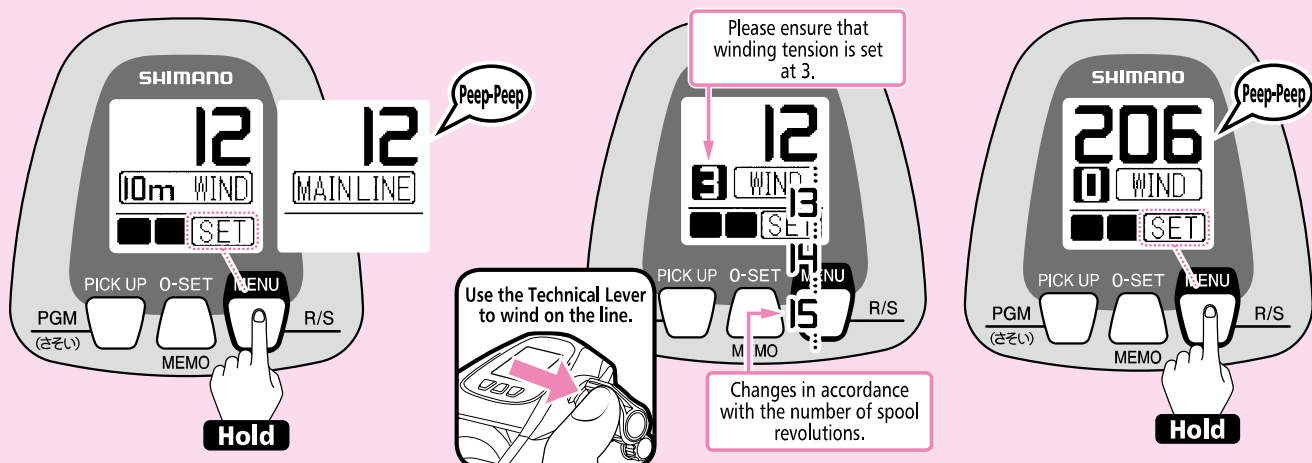


- 5** The alarm will sound (peep-peep) and the display will appear as shown in the diagram. Once winding-on is finished, tie the main line to the backing line.



- 6** Accurately wind on 10m of main line. The display changes in accordance with the number of spool revolutions.

Caution: The values and settings shown on the reel display in this manual are in some cases just examples. Actual values may differ.



- 7** Press the MENU button for more than 3 seconds.
The alarm will sound (peep-peep) and the display will appear as shown in the diagram.

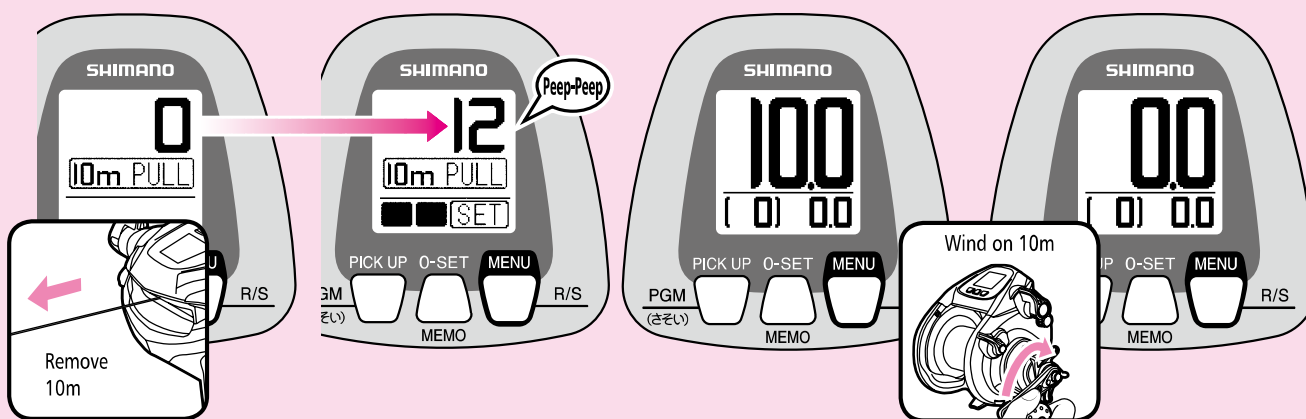
- 8** Use the Technical Lever to wind on the line.
A number corresponding to the number of spool revolutions will be displayed.
Operate at a winding tension of 3.
This value indicates the force (line tension) applied for winding the reel as a number. The number does not equal kilograms. In addition, it will differ from the value which appears in Rakuraku Mode.
When winding using the Technical Lever, the speed can be adjusted using the Technical Lever. To stop winding, set the Technical Lever to the "OFF" position.

- 9** After completely finishing winding on the line, press the 0 SET button for more than 3 seconds.
The alarm will sound (peep-peep).

Note:
Do not wind on all of the line. If all of the line is wound on, it will cause an error in the counter value.

(Continued on the next page.)

Caution: The values and settings shown on the reel display in this manual are in some cases just examples. Actual values may differ.



- 10** Accurately pull out 10m of line. (Check the changes in colour every 10m, or the number of marks occurring every 1m.) To finish learning, press the **SET** button for more than 3 seconds. The alarm will sound (peep-peep).

- 11** The display will return to Standard Mode and learning will be complete.
(In some cases there may be as much as a $\pm 3\%$ difference between the counter value and the actual length of the line.)
* This difference is the difference in the first cast made after learning.
* After this when actually fishing, if you think that the difference is too great, carry out Line Learning Adjustment as shown on pages 61. This will enable you to position your rig more accurately.

- 12** Wind on the 10m of line that was pulled out.

What to do after Completing Learning

(Continued on the next page.) →



Basic

All you need to know in order to use the reel.



Convenient

Simple and convenient features.

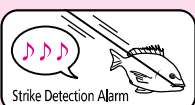


Advanced

More advanced features open up a wide range of possibilities.



Spool Free Mode

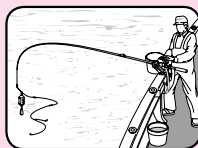


Spool Free Mode enables two functions—the Overwinding Prevention Function and the Strike Detection Alarm.

See Pages 59~60 for details.



Zero Reset

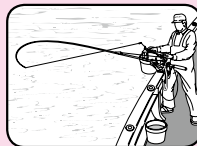


Press one button to Zero your line at the surface. Now you can accurately position your rig at your target depth.

See Pages 37~38 for details.



Gunwale Stop

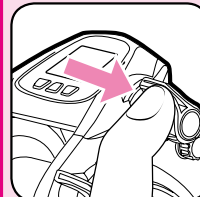


Stops retrieving the line at the point where you can raise the rod vertical and have the rig come straight to your hand.

See Pages 41~42 for details.



Technical Lever

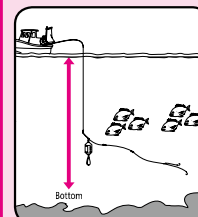


Use the Technical Lever to easily wind in your line when the bait needs to be changed or when you have hooked a fish.

See Page 15, 47~48 for details.



Saved Depth



You can store the water depth from the surface or from the bottom, and display it in the Saved Depth column. In Bottom-Up mode, the depth is displayed in the Saved Depth column with the saved position represented by 0.

See Pages 43 for details.



Manual mode

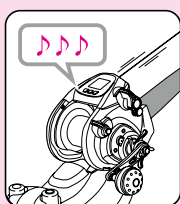
When the counter shows 0.0 or less, the motor can be used for winding the line in.

※ When Manual Mode is OFF and the counter shows 0.0 or less, the motor cannot be used for winding the line in. The default setting is OFF.

See Page 49
for details.



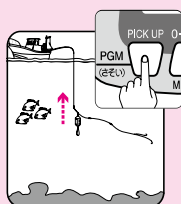
Electronic Drag Sound



The drag sound is generated electronically. This energizing sound is produced to spur on the angler.



Pick up

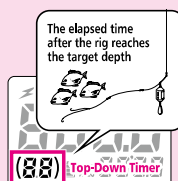


The motor winds in the line for as long as the button is pressed.

See Page 11~13
for details.



Top-Down Timer

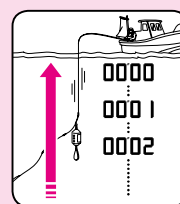


Displays the elapsed time after the rig reaches the target depth from the surface.

See Page 11
for details.



Rig Retrieval Time

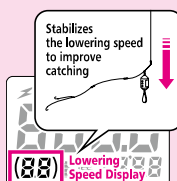


Displays the time remaining for the rig to be retrieved to the gunwale.

See Page 58
for details.



Lowering Speed Display



"()" flashes while the estimated lowering speed is being displayed. Stabilising the lowering speed can assist with improving the success of hooking.

See Page 11
for details.



Electric winding
load display

Electric Winding Load Display

This shows
the estimated
line tension.



This shows the estimated line tension when the motor is winding up the line. Drag adjustment and winding speed adjustment can help prevent the leader from snapping, and are also factors in determining the size and number of fish that can be caught.

See Page 12
for details.



Line Learning
Adjustment

Line Learning Adjustment

Line Marker



Adjust
Discrepancies

Counter

888

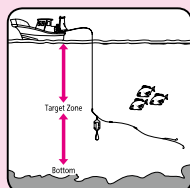
Position your rig more accurately by eliminating the discrepancy between actual line markers and the counter on the display.

See Pages 61~63
for details.



Top-Down/
Bottom-Up
Modes

Switching between Top-Down mode and Bottom-Up mode



If you would like to check the depth from the bottom in accordance with the fishing location, fishing method and the type of fish being caught, you can change the saved depth display method.

In Top-Down mode, the saved depth is displayed, but if you select Bottom-Up mode, you can check the depth with the saved depth position represented by 0.

See Pages 44~46
for details.



Rakuraku Mode
Fixed Speed
Mode

Change between Rakuraku Mode and Fixed Speed Mode

The spool rotates at
a constant speed in
Fixed Speed Mode.

Switch between
Modes

Line tension in constant in
Rakuraku Mode.

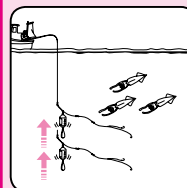
Change between Rakuraku Mode, which maintains a constant tension and prevent line slack, and Fixed Speed Mode, which maintains spool rotation at a constant speed.

See Pages 47~48
for details.



Program Mode

Program Mode



The electric reel can reproduce various movement patterns. Three movement patterns are available—3 Step, 2 Step, and Repeat—plus a Learning Mode to program/select your own movement patterns.

See Pages 50~57
for details.

Various Techniques (You will want to learn these techniques to improve your catch.)



Technique

Drop Your Rig Quickly

This is an especially effective technique when fishing for squid.

- Normally, the mechanical brake knob is tightened to slightly brake the free rotation of the spool to prevent backlash due to the up/down movement of the vessel.

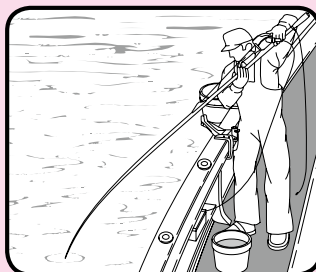
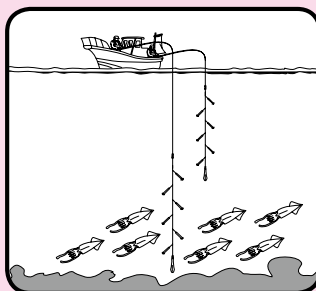
You can also use the techniques shown below.



- This reel has an Auto Casting Function. The motor automatically starts when the rig is 5m or more past the gunwale stop position and spool resistance is minimized. The motor automatically stops when the clutch is returned.

* As the motor is in operation during Auto Casting, engaging the clutch will cause the line to be slightly wound in but this is not abnormal.

- Point the tip of the rod downward to reduce guide resistance as shown in the picture on the right.

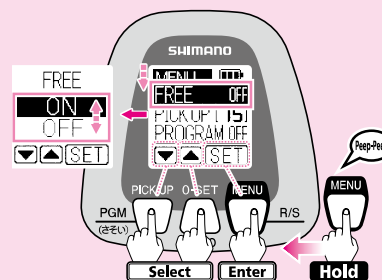


Turning ON the Auto Casting Function

When you turn the reel ON the Auto Casting Function will be OFF.

1. With the motor stopped and the reel in Standard Mode, press MENU for more than 3 seconds to enter Menu Mode.
2. Select FREE and press MENU.
3. Select ON and press MENU.

Please see Pages 12 for details regarding menu button operation.



Zero Setting (Always do this before you start fishing.)

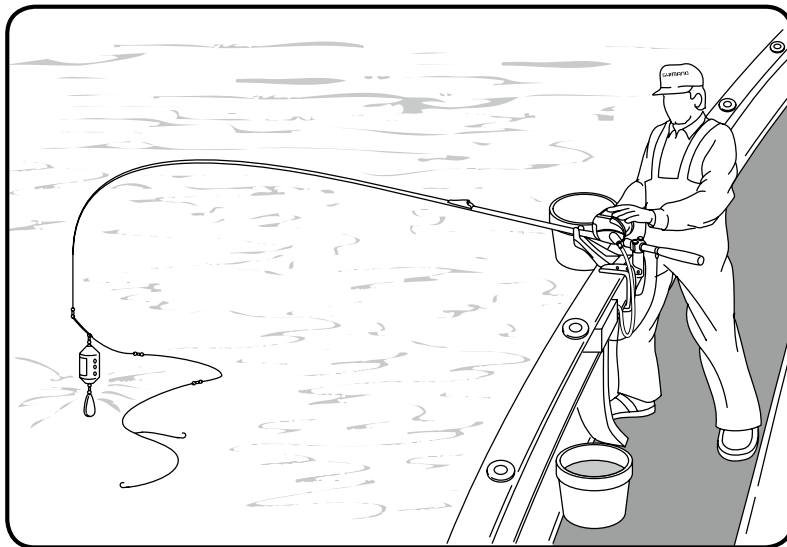


Accurately reach your target fishing depth.

If you want to improve your catch you must be able to position your rig accurately at the target depth. Zero setting resets the counter to zero when the rig is on the surface.

Zero setting enables you to know the depth of the rig and to accurately position it at the target depth.

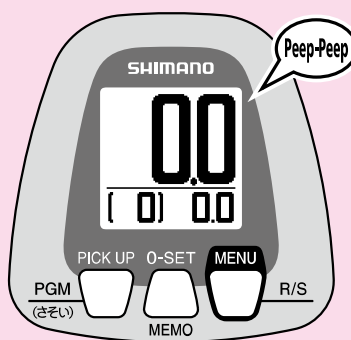
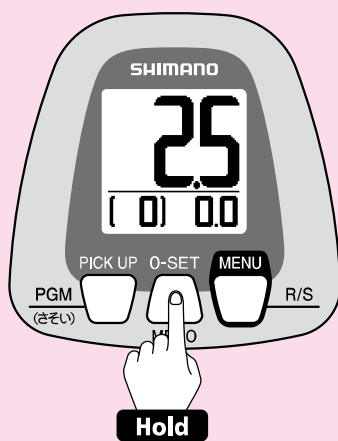
- * Do NOT wind too much line onto the spool as this can cause inaccurate readings when setting zero in one of the Learning Modes.
- * If you carry out zero setting when the depth display shows 10.1m or more, line breakage compensation will be carried out.



The counter can be reset to 0m when the rig is on the surface.

(Continued on the next page.)

Let's Try Zero Setting



1 Lower the rig to the surface and press 0 Set for more than 3 seconds.

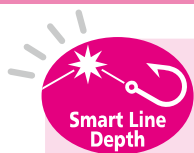
2 The alarm will sound (peep-peep) and the display will change as shown above. Zero setting is complete.

* It may not be possible to zero the counter if Jigging Mode is ON. Always turn Jigging Mode OFF before zeroing the counter.

Caution

Do NOT wind too much line onto the spool as this can cause inaccurate readings when setting zero in one of the Learning Modes.

Adjusting Smart Line Depth

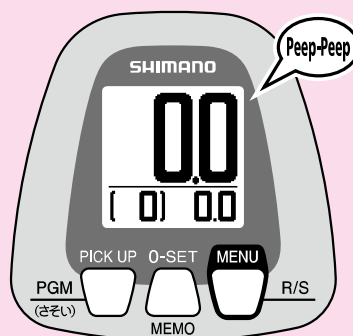


This function allows you to easily return your rig to the same depth after repairing your line if it breaks.

* If you carry out zero setting when the depth display shows 10.1m or more, line breakage compensation will be carried out.



1 If you break your line, after repairing it, lower your rig to the surface and press 0 Set for more than 3 seconds.



2 The display will change as shown above. The computer will automatically return your rig to the same depth it was at before the line broke.

Caution

Do NOT adjust Smart Line Depth with an excessive amount of line wound onto the spool as this can cause inaccurate line learning.

Caution

Always check that Jigging Mode is turned OFF before adjusting Smart Line Depth. If it is ON and jigging starts, then the line can be wound in and cause unforeseen injuries.

S A-RB



Shielded Anti-Rust Bearings provide even smoother operation.

A special corrosion-resistant material is applied to the surface of conventional antirust bearings to minimize saltwater penetration and these bearings are located at strategic locations to achieve even smoother performance.

These enable dramatically improved casting performance when fishing for spear squid, as well as improved float fishing performance — something that was said to be difficult to achieve with a powered reel.

This has been made possible by the optimum balance that has been achieved between the safety bar and the level winder, which is the part that is said to cause line tangles when float fishing.

Not only are these bearings resistant to rust, but they also minimize the formation of salt crystals inside the bearings, which can lead to corrosion.

**12 Shielded Antirust Bearings
+ 2 Stainless Steel Bearings (in the motor)**

S A-RB