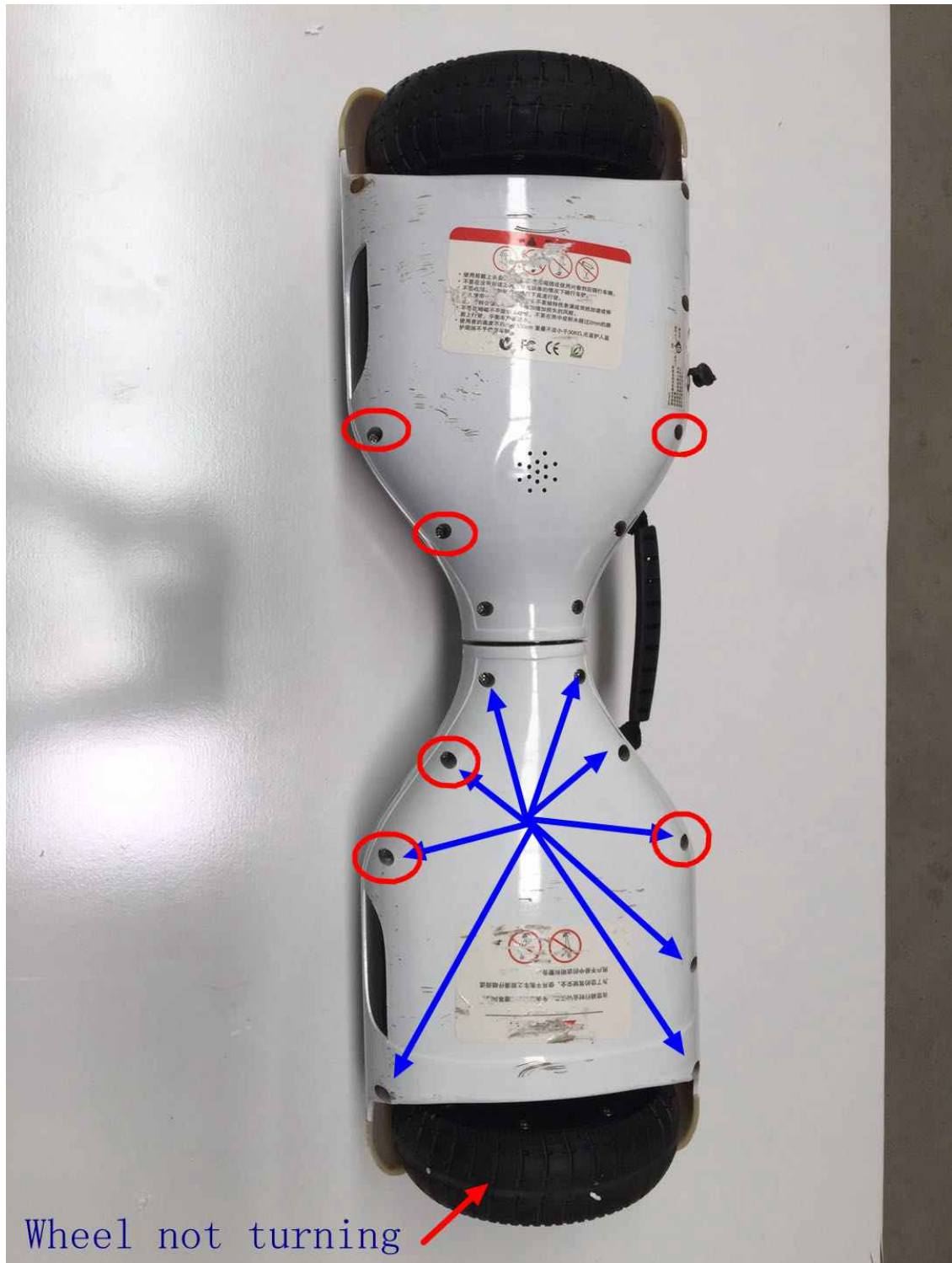
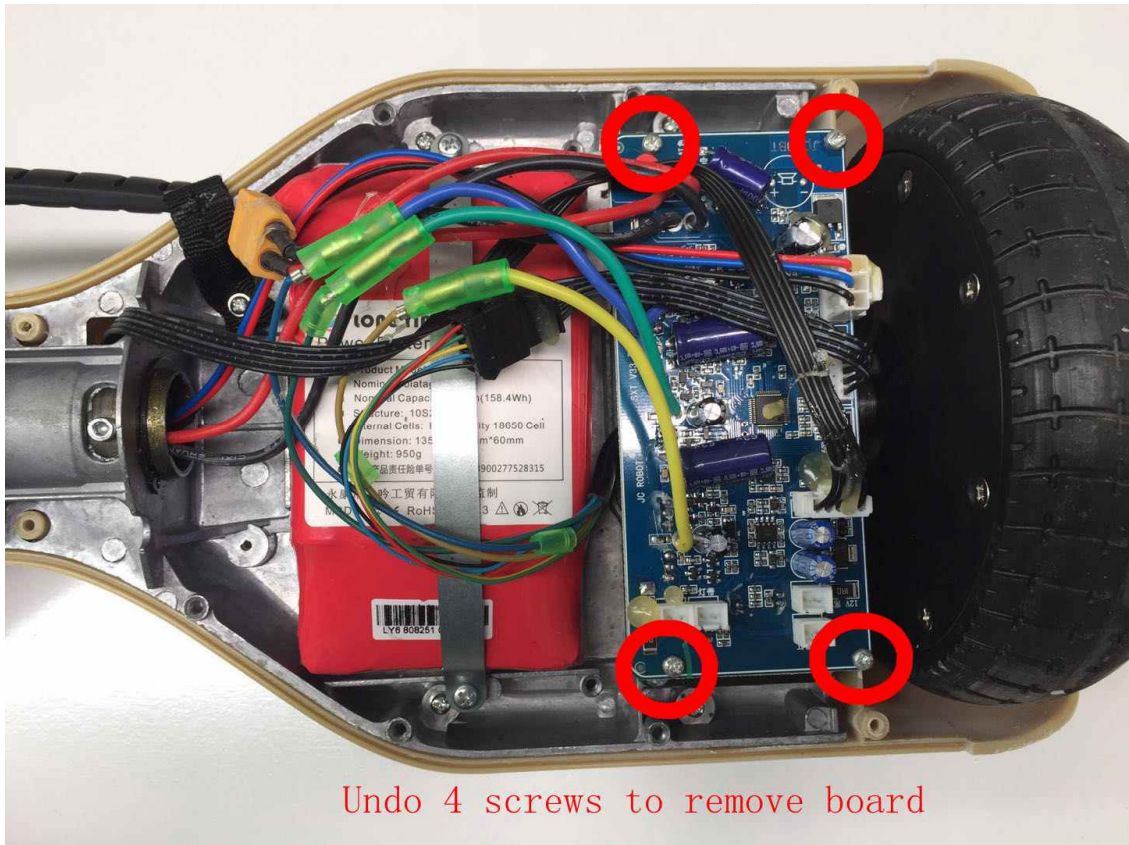


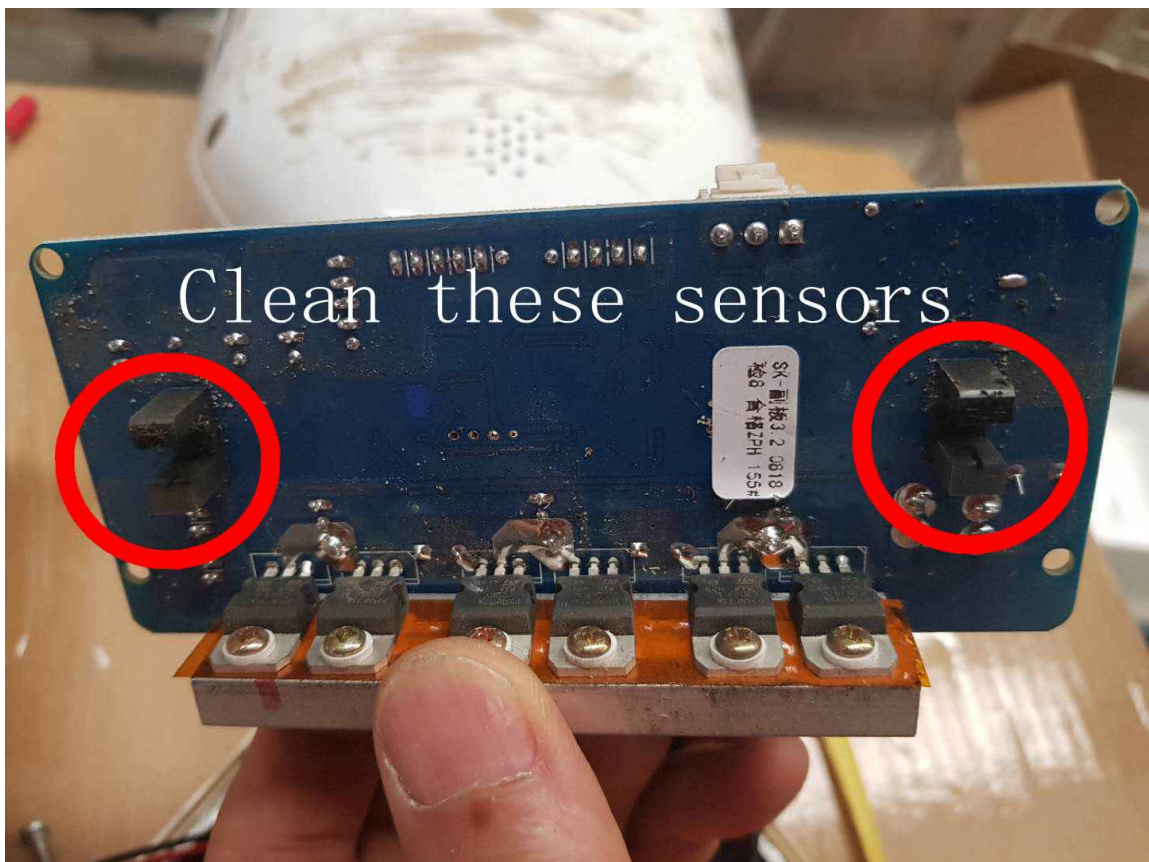
One wheel not turning, is usually the result of dust or debris betting into the sensors on the board. On the side where the wheel is not turning, remove all the screws to open the cover. The screws circled in red are different screws to the rest, make sure not to mix the screws, and the screws go back to the place they originally came out of.

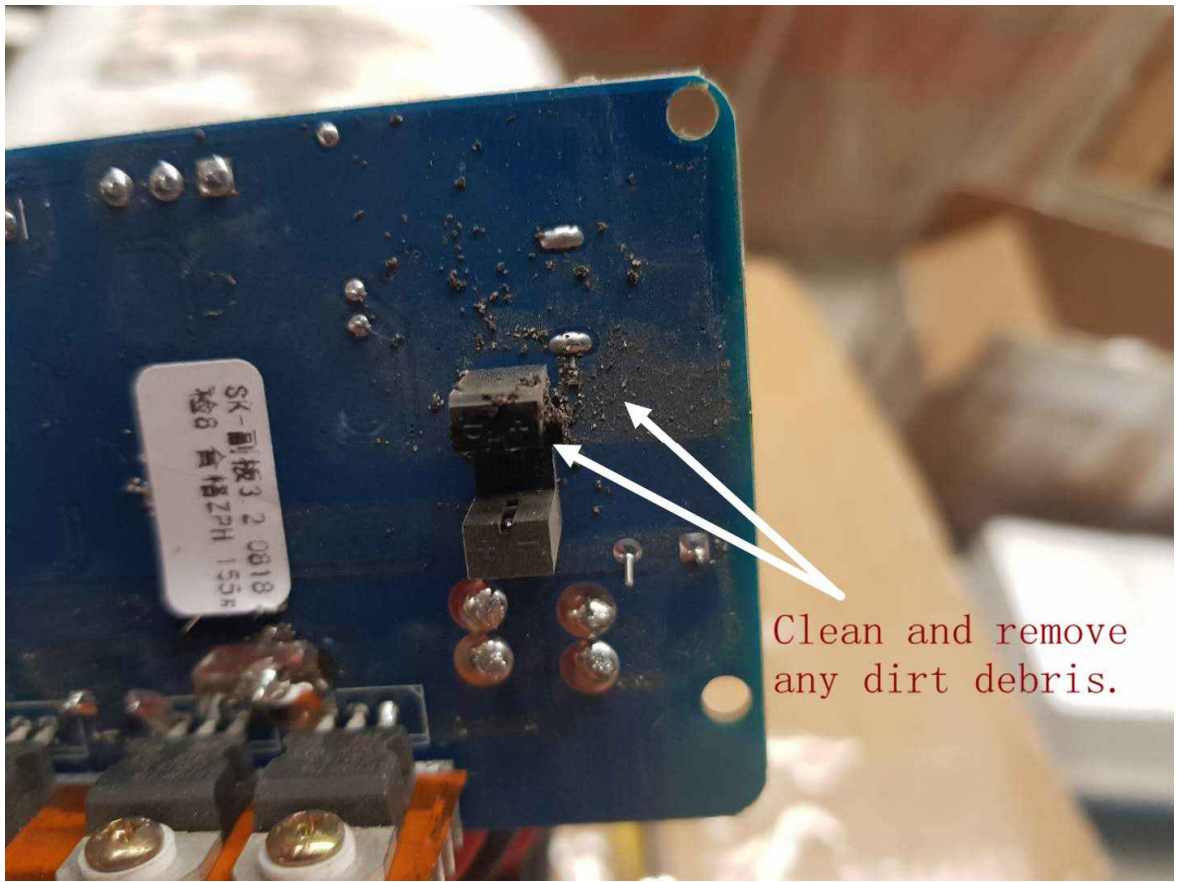


Wheel not turning



Undo 4 screws to remove board





Clean and remove any dirt debris.

After cleaning, re assemble the unit in the reverse order. And the unit should work normally