



**GOLDEN GROVE
PARK 'N' RIDE
PROJECT**

PROJECT NEWSLETTER – February 2022

The new Golden Grove Park 'n' Ride car park will provide 450 car parking spaces, across three levels (ground floor plus two upper levels) when completed. It will include ten *Disability Discrimination Act 1992*, compliant car parks and provision for secure bicycle storage. The aim of the project is to meet demand for Park 'n' Ride commuters and to increase public transport usage.

Project update

The Golden Grove Park 'n' Ride Project is nearing completion with the following works carried out over the last few months:

- installation of balustrade and fitting out the staircases;
- completion of the building façade;
- installation of bike storage;
- erection of signage;
- internal building services;
- installation of safety barriers;
- road works on The Grove Way, including upgrading to the 4-way intersection;
- footpath works;
- works on the access road around the Park 'n' Ride; and
- commencement of landscaping works.



Façade works commenced in November 2021

Upcoming works

As the project nears completion the focus is on finishing works already underway and preparing for the opening of the car park, access road and 4-way intersection on The Grove Way.

During February and early March, the following works will occur:

- new signage erected;
- parking space line marking and wheel stops;
- footpath works on the western side of The Grove Way;
- installation of bus shelters;
- asphaltting and median works on The Grove Way;
- landscaping across the project area; and
- works on the access road around the Park 'n' Ride.

Works will generally occur Monday to Saturday from 7am to 6pm, however some lane and speed restrictions will be in place 24 hours a day for safety reasons. Please plan ahead, allow extra travel time and take extra care when workers are on site. Observe speed limits, lane restrictions and traffic controllers when travelling through the area.

Some temporary pedestrian detours will be in place around the works site and pedestrians are advised to follow directional signage. Every effort will be made to minimise impacts to the community.

Some noise disturbance can be expected at times while these works are completed, however the work will be managed to minimise disturbance to nearby residents and businesses as much as practically possible.

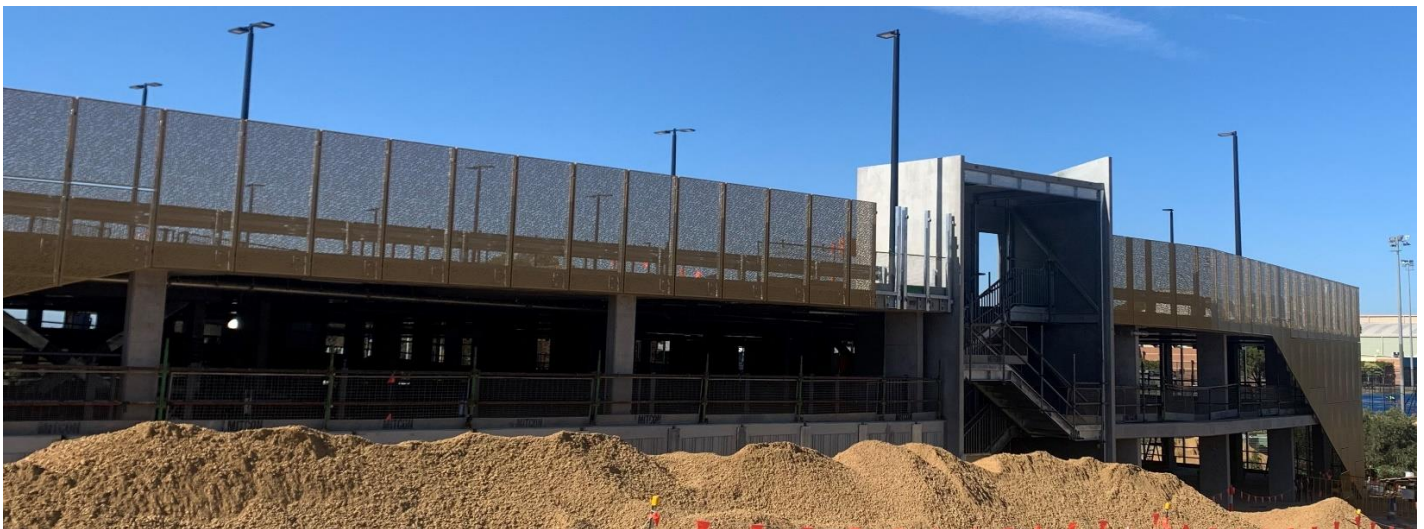
Bus stop locations

In February 2022, bus stops 62A (east and west) will be relocated to their final location and the temporary bus shelters will be removed. Bus routes C2X and A01 (City to Greenwith) will return to stopping at bus stop 62A (west) on The Grove Way at this time. If you have further questions in relation to bus routes, please contact the Adelaide Metro Team on 1300 311 108 or visit www.adelaidemetro.com.au.

Please see map on next page for the final bus stop locations.

What's next?

The Golden Grove Park 'n' Ride is expected to open to commuters soon. Commuters will be advised of the opening date via the project mailing list, on the project website and also through signage at the temporary car park and at Tea Tree Plaza Park 'n' Ride. To register for the mailing list please visit the project website at: www.ptpa.com.au/goldengroveparknride



Façade and earth works on the northern side – December 2021.

📞 1300 705 992

@ goldengroveparknride@ptpa.com.au

🌐 www.ptpa.com.au/goldengroveparknride



**Government
of South Australia**

Project features

Once complete the Golden Grove Park 'n' Ride will provide the following features:

- 450 car parks;
- free parking for commuters to Park 'n' Ride;
- Adelaide Metro metroCARD recharge machine;
- bike enclosure;
- bike repair station;
- CCTV in and around the Park 'n' Ride
- smart bus stop signs;
- Kiss 'n' Go car spaces; and
- disability access parking.

Please see the map on the next page for the locations of these features.

Landscaping

The landscaping for the Golden Grove Park 'n' Ride Project has now commenced. Plant species have been carefully selected to ensure their suitability for the surrounding area.

The project will plant:

- more than 30 trees, including 6 different species;
- over 2300 ground covers and grasses, including 10 different species; and
- over 170 shrubs, of 11 different species.

For more details on the species to be planted please view the landscaping palette on the project website at www.ptpa.com.au/goldengroveparknride

MATES in Construction accredited site

The Golden Grove Park 'n' Ride Project is proud to be working with MATES in Construction to address one of the biggest challenges within the construction industry.

Every year 190 Australians working in the construction industry take their own lives.

MATES is a charity established in 2008 to reduce the high level of suicide among Australian construction workers. MATES provides suicide prevention through community development programs on sites, and by supporting workers in need through case management and a 24/7 help line.

The Golden Grove Park 'n' Ride Project is now a MATES Accredited Site. To become an accredited site the project has:

- maintained more than 80% of staff trained in MATES General Awareness Training;
- maintained a ratio of 1 Connector to 20 workers (a Connector is a person trained to help keep someone safe in a crisis); and
- one Applied Suicide Intervention Skills Training worker.

The accreditation was presented to the project in December 2021 by Matt Carter from MATES, who reminded the workers on site about the importance of looking out for each other during the holiday period.

For more information on MATES in Construction please visit their website: <https://mates.org.au/>



Matt Carter from MATES presenting the Golden Grove Park 'n' Ride team with site accreditation



Overview of the design of the Park 'n' Ride including the new access road




Thank you to the community and commuters

The Golden Grove Park 'n' Ride Project would like to thank the local community and commuters for their co-operation and patience while these important works are undertaken.

More information

If you have any questions or would like to speak to a member of the project team, please call 1300 705 992 or email: goldengroveparknride@ptpa.com.au

#18218042

-  1300 705 992
-  goldengroveparknride@ptpa.com.au
-  www.ptpa.com.au/goldengroveparknride



**Government
of South Australia**