



PTP
ALLIANCE

OAKLANDS CROSSING GRADE SEPARATION

SEPTEMBER NEWSLETTER

Major works for the Oaklands Crossing Grade Separation have now been underway for several months and the project site is incredibly busy as we near the October long weekend works and second traffic switch.

What has happened to date?

Since July 2018, the project has established six major work zones within the construction site.

There are currently multiple crews working across each zone to excavate for the new station and rail corridor, as well as build the western side of the Morphett Road bridge.

Outside of these zones in both main and local roads, we have also been constructing car parks and installing gas, electricity and water services.

Excavating the new station and rail corridor

As of mid-September 2018, the project had removed approximately 65% of the total amount of soil that will need to be excavated. This is mostly visible next to the existing station, where the new station will be positioned.

The lowered rail corridor is being excavated in levels. Soil nails are drilled two metres deep into the earth walls and set in place with concrete. Steel reinforcement is then attached to the walls and shotcrete is sprayed over the nails and steel.

These works provide support to the walls and the crews can then proceed with excavating down to the next level, to repeat the process.

The project started soil nail and shotcrete works in mid-August and as

of mid-September, 20% of these works were complete.



Soil nail with concrete slurry



Shotcrete over the soil nails and steel reinforcement



1300 205 994



oaklandscrossing@ptpa.com.au



ptpa.com.au/oaklands



Australian Government

BUILDING OUR FUTURE



Government
of South Australia

Department of Planning,
Transport and Infrastructure



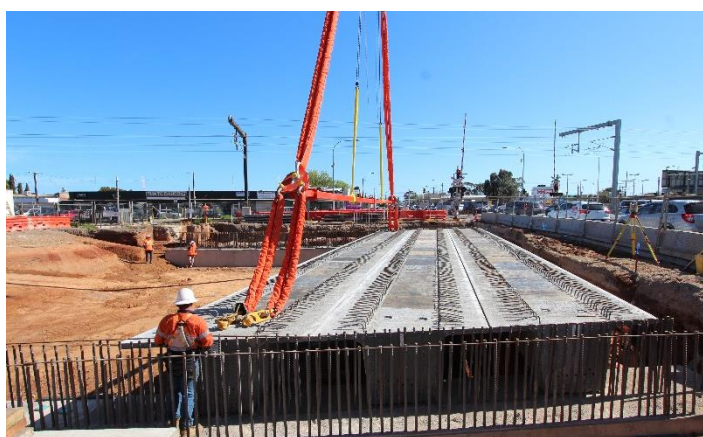
CITY OF
MARION

Key Milestones

The project has reached a number of milestones over the past few months including:

- Implementation of the first traffic switch
- Completion of the temporary retaining wall to protect the existing station
- Installation of 141 piles - four weeks ahead of schedule
- Installation of nine super T concrete beams to form the western side of the Morphett Road bridge.

Over the next few weeks, the team will undertake a number of critical works including the completion of a water main relocation, installation of gas, electrical and telecommunication services over the October long weekend and implementation of the second traffic switch. For further information on the long weekend works, see 'works notifications' on the newly-released website: www.ptpa.com.au/oaklands.



Installation of the Super Ts to form the western side of the Morphett Road bridge

Bring on the second traffic switch

The first traffic switch was implemented in July 2018 to allow construction to start on the western side of the Morphett Road bridge.

These works are nearly complete and on the weekend of 6 October, a second traffic switch will occur to allow work to start on the eastern side of the Morphett Road bridge.

From 7am, Sunday, 7 October, road users will be re-directed onto the newly constructed western side of the Morphett Road bridge to travel through the level crossing.

To enable the traffic switch, a number of preparatory works will be undertaken leading up to it. This includes signalling, concrete, asphalt and line marking. Works will be undertaken during the day where possible, with some evening work required to mitigate traffic impacts.

Please note that during works on Saturday, 6 October, there will be a partial, late-night rail line closure between 7:30pm and 6:30am. Substitute buses will run between Adelaide and Brighton and trains will run between Brighton and Seaford.

For further information please visit the Adelaide Metro website at www.adelaidemetro.com.au.

Pedestrian access

With the opening of the western side of the Morphett Road bridge, pedestrian access to and around the Oaklands Railway Station will change.

In the days after the traffic switch, the project will create a new access path alongside the construction zone for the eastern side of the road bridge. This provides a shorter detour than is currently in place and we thank the community for their patience.

Pedestrian access paths will vary over the coming months and we will advise of changes in the lead up to them. Please follow directional signage for access around the level crossing and construction areas. *To see the new traffic switch and pedestrian access, please see map overview.*



1300 205 994



oaklandscrossing@ptpa.com.au



ptpa.com.au/oaklands



Australian Government

BUILDING OUR FUTURE



Government of South Australia

Department of Planning, Transport and Infrastructure



CITY OF

MARION

Traffic management

Speed and lane restrictions, road closures and detours will continue, with traffic management at worksites to advise commuters of changed traffic conditions. Where possible, works that may cause further traffic delays will be undertaken outside peak hours and during weekends. Please take care and observe signage when travelling through the area.

Haulage routes and stock piling

The project will see increased machinery and truck movements to enable transportation of materials to and from stockpile areas, and across the site.

Street sweepers, water carts and hoses are being used to ensure that stockpiles are maintained and streets are kept tidy, especially as we enter warmer weather.

Project timeline

October 2018 - January 2019

- Divert Morphett Road west
- Build eastern side of bridge
- Install pedestrian bridge
- Continue excavation
- Construct new station
- Build new rail line
- Commence road works for future traffic changes.

January - end 2019

- Continue road works for future traffic changes
- Continue to build new rail line and station
- Tie in the new rail line
- Open new station and remove old station
- Landscape and finish.

Over the next few months

Traffic switch: After the traffic switch, the project will start building the eastern side of the Morphett Road bridge. Works will take a few months to complete.

Pedestrian and cyclist bridge: The bridge is scheduled to arrive to site in early October, and the team will install final fixtures, ready for lifting into position in November.

Station works: Excavation, soil nail and shotcrete works will continue to enable the start of the station construction. The project will start to build the new station from October and early works include:

- Construction of canopy foundations
- Installation of underground services
- Installation of precast concrete.

Rail line: This will be constructed from February to April 2019.

Future traffic changes: Works for the Morphett and Dunrobin Roads traffic changes will start to occur from November. Activities at these locations will include signalling, stormwater upgrades, kerb demolition pavement widening and asphaltting. We will provide further information closer to the time.



Pedestrian and cyclist bridge being constructed off-site by SA family business Bowhill Engineering

Local community involvement

The project team has been looking for opportunities to become involved with the community through local business support, information sessions, recognition of national awareness days and workshops with nearby schools.

We have been working with the Warradale and Seaview Downs primary schools, through workshops to construct nest boxes and build straw bridges, as well as a project to look at designing the additional car parks required for the project. For any nearby businesses or schools that are interested in working with the project, please contact us.



1300 205 994



oaklandscrossing@ptpa.com.au



ptpa.com.au/oaklands



Australian Government

BUILDING OUR FUTURE



Government of South Australia

Department of Planning, Transport and Infrastructure



CITY OF
MARION

Support local businesses

Throughout these construction works, it is important to recognise that local businesses will remain open and require the ongoing support of the community and those employed on the project, to assist in the growth and success of the local business network.

Art installations

The project has been collaborating with Council and local artists to create temporary art installations around the project zone.

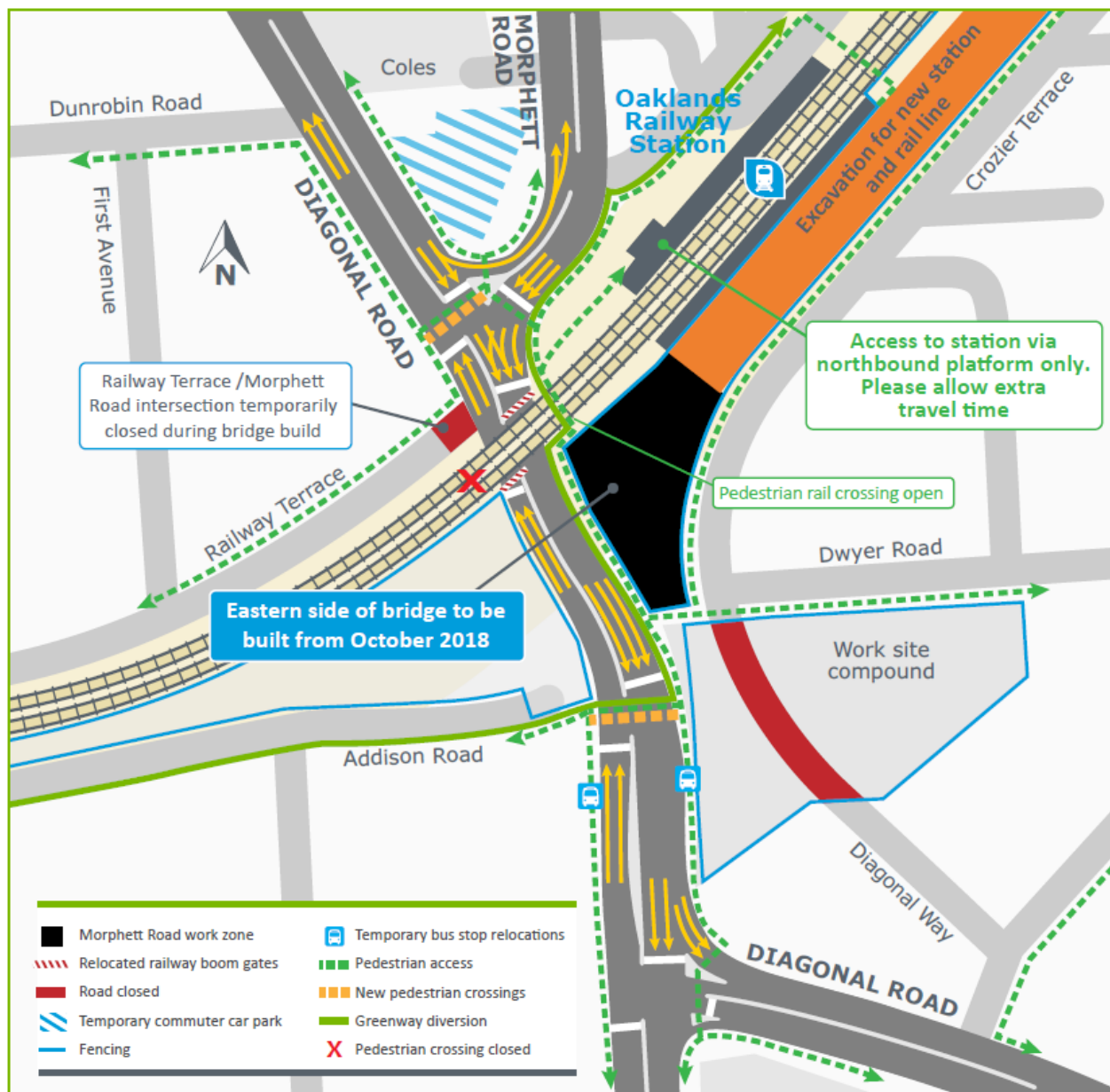
Keep an eye out for the next one to be installed next to Morphett Road, in mid-October

More information

To find out more about the Oaklands Crossing project and register for future email updates, you can contact the project team using the details below.

Real-time traffic alerts

For real-time traffic information download the addinsight app for Apple or Android or visit the Traffic SA website at www.traffic.sa.gov.au



Second traffic switch arrangement in place from Sunday 7 October Pedestrian and cyclist access to change in the days after the traffic switch



1300 205 994



oaklandscrossing@ptpa.com.au



ptpa.com.au/oaklands



Australian Government

BUILDING OUR FUTURE



Government of South Australia

Department of Planning, Transport and Infrastructure

