



Artist's impression only



**PTP**  
ALLIANCE

## OAKLANDS CROSSING GRADE SEPARATION

# PROJECT UPDATE – MAY 2018

The Oaklands Crossing Grade Separation project will improve safety for all road users and ease traffic congestion by lowering the rail line under the road and removing the level crossing at the intersection of Morphett and Diagonal roads.

The \$174.3 million project is jointly funded by the Australian Government (\$95 million), the South Australian Government (\$74.3 million) and the City of Marion (\$5 million), and will be delivered by the Public Transport Projects (PTP) Alliance with the Department of Planning, Transport and Infrastructure (DPTI).

### What has happened so far?

Since being appointed in January 2018, the PTP Alliance has been developing detailed designs, preparing construction schedules and engaging the local community.

The Alliance conducted two information sessions for the

community, with more than 330 people attending who provided many comments and suggestions for the design team. To date the team has engaged with more than 1000 residents, road users and local businesses and will continue to discuss the project with interested people, answer queries, prompt feedback and register stakeholders for project updates.

Investigative works, including; surveying, traffic modelling, service locating and geotechnical investigations, have helped feed information into the design process.



*Geotechnical investigative works*

### What is happening over the coming weeks?

Major construction works will start next month and the community will notice increased activity around the area in the lead up to these works. Works will include the removal of two billboards, set up of site compounds, site fencing and construction of a temporary commuter car park in the vacant DPTI land, next to Coles.

Please look out for project signs in car parks and around the station that will provide information about upcoming car parking and access changes.

Please contact us on the details below for more information. We are also happy to meet with residents, community groups and businesses to explain the project and upcoming works in more detail.



1300 205 994



[oaklandscrossing@ptpa.com.au](mailto:oaklandscrossing@ptpa.com.au)



[ptpa.com.au/oaklands](http://ptpa.com.au/oaklands)



Australian Government

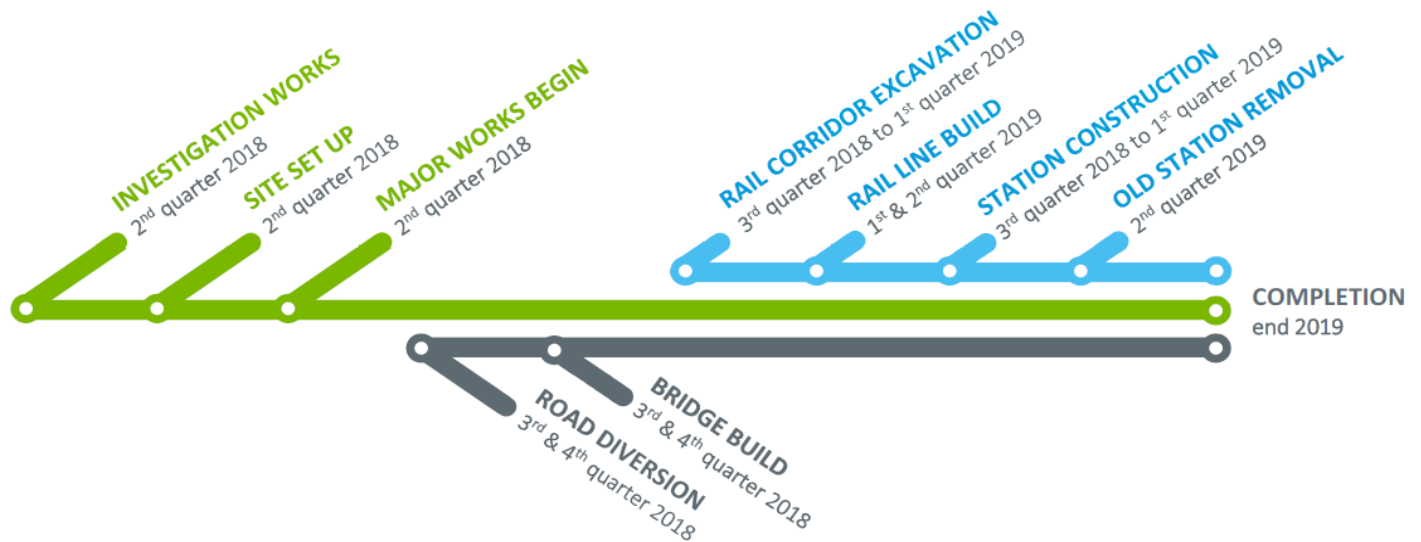
**BUILDING OUR FUTURE**



Government  
of South Australia

Department of Planning,  
Transport and Infrastructure





### May - July 2018

- Install fencing around work site
- Construct temporary and permanent car parks and remove old car parks
- Remove vegetation
- Piling works
- Relocate utility services.

### July - September 2018

- Divert Morphett Road east
- Build western side of bridge
- Relocate utility services
- Piling works
- Excavate lowered station platform and rail corridor.

### September 2018 - January 2019

- Divert Morphett Road west
- Build eastern side of bridge
- Continue excavation
- Construct new station
- Build new rail line.

### January - end 2019

- Continue to build new rail line and station
- Tie in the new rail line Open new station
- Remove old station
- Landscape and finish.

## How will the project be constructed?

Works have been carefully scheduled so that Morphett Road can remain open during construction. The bridge over the lowered rail will be constructed in three key stages and Morphett Road will be diverted around the bridge construction site.

At times, pathway and road lane closures and speed restrictions will apply for safety reasons. Where possible, works will be scheduled to minimise impacts on peak hour travel.

## Will Oaklands Station remain open during construction?

The new rail line and station will be built to the south of the existing line to allow the station to remain open for most of the construction.

It is anticipated it will be necessary for a short, partial closure of the Seaford line in the latter stages of construction. This will be timed to minimise disruption to train passengers.

Substitute buses will be available, and we will provide more information at a later date.

## How has community feedback been used?

The PTP Alliance would like to thank the community for attending the first two project drop-in information sessions in March 2018.

Project team members have received valuable feedback including information about species for new vegetation, car park and pedestrian access demand and traffic patterns.

The design has continued to develop and will address community and stakeholder input wherever possible to provide the most effective project design. Final designs will be released mid-2018.



1300 205 994



[oaklandscrossing@ptpa.com.au](mailto:oaklandscrossing@ptpa.com.au)



[ptpa.com.au/oaklands](http://ptpa.com.au/oaklands)



Australian Government

**BUILDING OUR FUTURE**



Government of South Australia

Department of Planning, Transport and Infrastructure





## Continued vehicle, cyclist and pedestrian access

The PTP Alliance will soon start to install temporary fencing and boarding around the project construction zone.

Fencing will be in place for the entirety of the project to delineate the construction zone and ensure that vehicles, cyclists and pedestrians have continued safe access to the existing station and surrounding area.

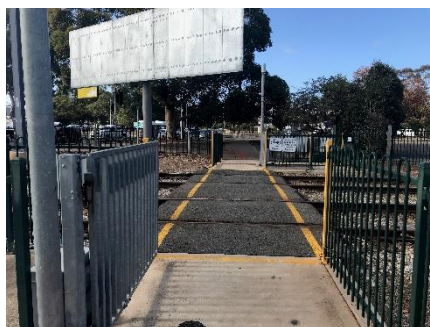
We will implement detours that reflect the work stages and ensure access is clearly signed and reasonable. *See map overleaf for access changes until July 2018.*

## Relocation of pedestrian crossings

To facilitate upcoming works, the north-south pedestrian railway crossing adjacent Railway Terrace and the Morphett Road east-west pedestrian road crossing will be temporarily closed, in June 2018.

To facilitate access around the area, two new pedestrian road crossings will be installed. These are:

- A temporary east-west pedestrian road crossing on Morphett Road, further south of the railway
- A permanent east-west pedestrian road crossing on Diagonal Road, just north of the railway.

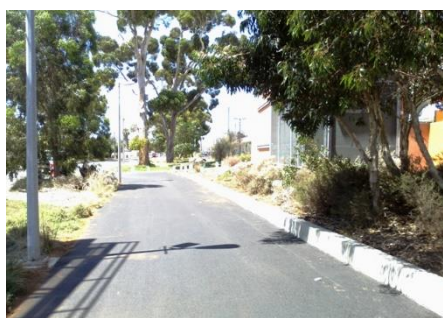


*Pedestrian railway crossing*

## Marino Rocks Greenway

The Greenway path will remain open along Addison Road and Murray Terrace for the majority of the project. There will be some restrictions during car park construction and traffic management will be in place to help guide pedestrians and cyclists.

Upon completion of the project, the Greenway path will run along Addison Road, under Morphett Road to Crozier Terrace and cross over to Murray Terrace via a shared pedestrian and cyclist bridge. From here, the existing path will resume.



## Commuter car parking during construction

Sections of commuter car parking will need to be removed to allow for construction works.

Car parking within Murray, Crozier and Railway Terraces will start to be temporarily closed and upgraded from mid-May 2018.

To help mitigate removals, a temporary commuter car park will be built in the vacant DPTI land, next to Coles, from mid-May 2018. This car park will be open for use from mid-June 2018. *See map overleaf for car park changes.*

Train commuters who usually use the Oaklands train station car park are urged to consider alternative options, as there will be fewer available spaces during construction.

Additionally, if commuters are within walking or cycling distance to the station and it is feasible, consider this form of transport to the station instead of driving and parking. The Kiss n' Ride on Murray Terrace will also remain open throughout the project.

## More information

Project updates will be provided regularly, detailing construction works, traffic changes and pedestrian and cyclist access.

To find out more about the Oaklands Crossing Grade Separation project and register for future email updates, you can contact the project team using the contact details below.



1300 205 994



[oaklandscrossing@ptpa.com.au](mailto:oaklandscrossing@ptpa.com.au)



[ptpa.com.au/oaklands](http://ptpa.com.au/oaklands)



Australian Government

**BUILDING OUR FUTURE**

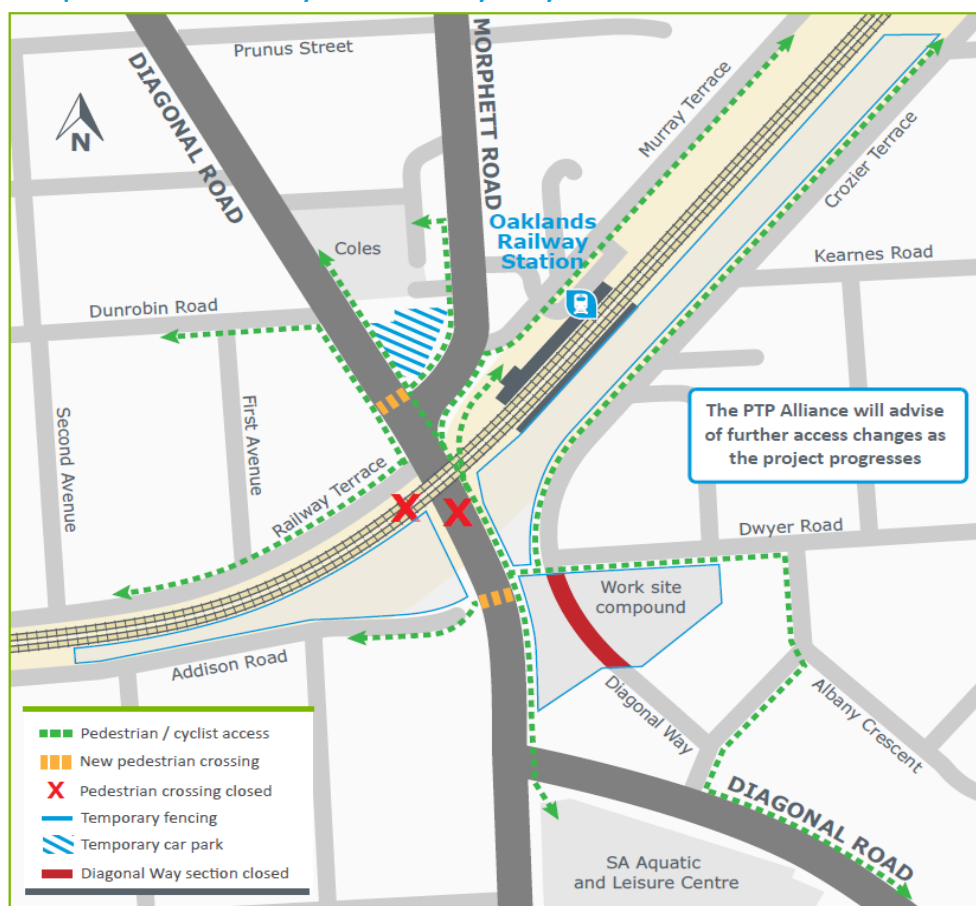


Government of South Australia

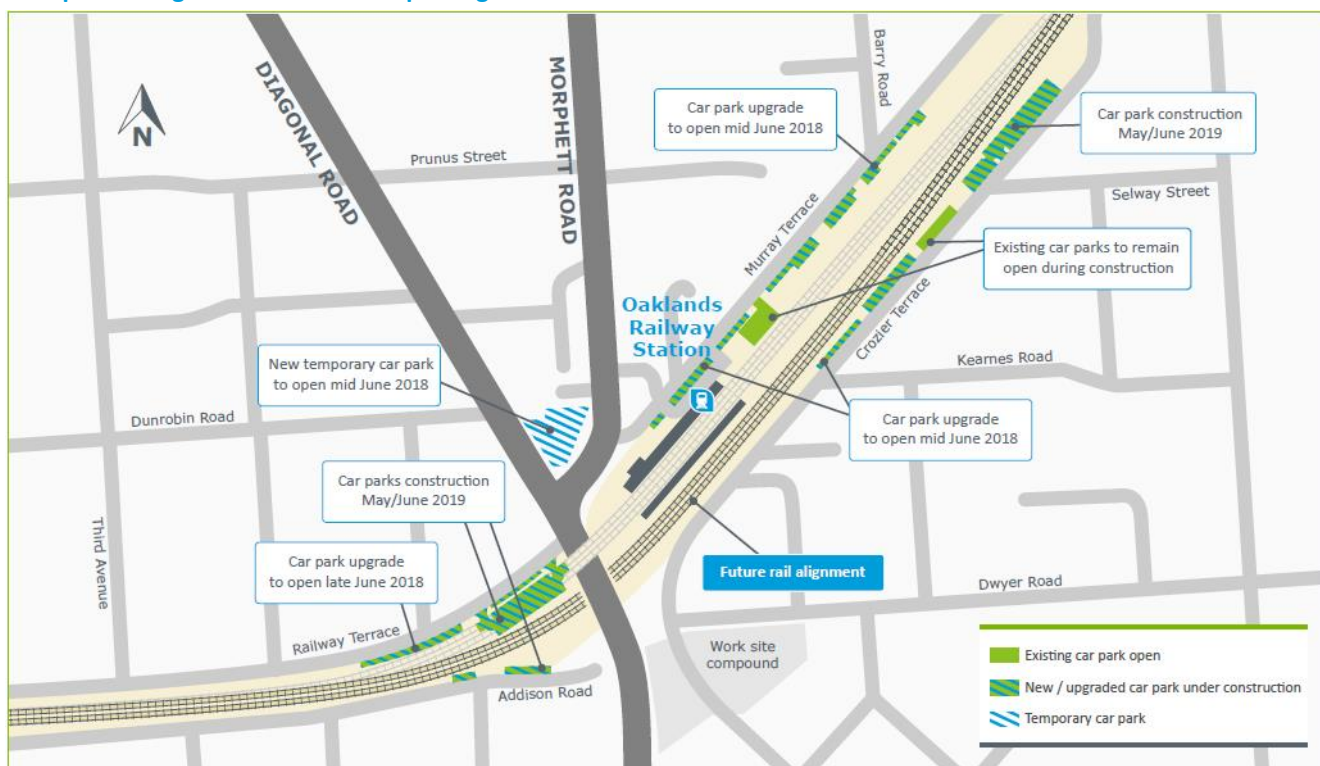
Department of Planning, Transport and Infrastructure



## Map 1 - Pedestrian and cyclist access May – July



## Map 2 - Changes to commuter car parking



1300 205 994



[oaklandscrossing@ptpa.com.au](mailto:oaklandscrossing@ptpa.com.au)



[ptpa.com.au/oaklands](http://ptpa.com.au/oaklands)



Australian Government

**BUILDING OUR FUTURE**



Government of South Australia

Department of Planning, Transport and Infrastructure

